



2024

LC 500 / LC 500h

OWNER'S MANUAL QUICK GUIDE

Contents

The Quick Guide is not intended as a substitute for your *OWNER'S MANUAL*. We strongly encourage you to review the *OWNER'S MANUAL* and supplementary manuals so you will have a better understanding of your vehicle's capabilities and limitations.

Pictorial Index	3
For safe use	
Floor Mat Installation.....	13
Hybrid System (LC500h)	
Hybrid System (LC500h).....	14
Entering and Exiting	
Keys.....	17
Smart Access System with Push-button Start.....	19
When Driving	
Front Seats.....	21
Driving Position Memory.....	22
Engine (Ignition) Switch (LC500)/Power (Ignition) Switch (LC500h).....	24
EV Drive Mode (LC500h).....	27
Automatic Transmission (LC500)/Hybrid Transmission (LC500h).....	28
Turn Signal Lever.....	32
Parking Brake.....	33
Brake Hold.....	35
Multi-information Display.....	36
Head-up Display.....	38
Headlight Switch.....	41
AHB (Automatic High Beam).....	42
Windshield Wipers and Washer.....	44
Lexus Safety System + 2.5.....	45
LTA (Lane Tracing Assist).....	46
Dynamic Radar Cruise Control with Full-Speed Range.....	47
Intuitive Parking Assist.....	52
Driving Mode Select Switch.....	53
BSM (Blind Spot Monitor).....	55
Tire Pressure Warning System.....	57
Active Rear Wing.....	59
Soft Top Roof (Convertible).....	60

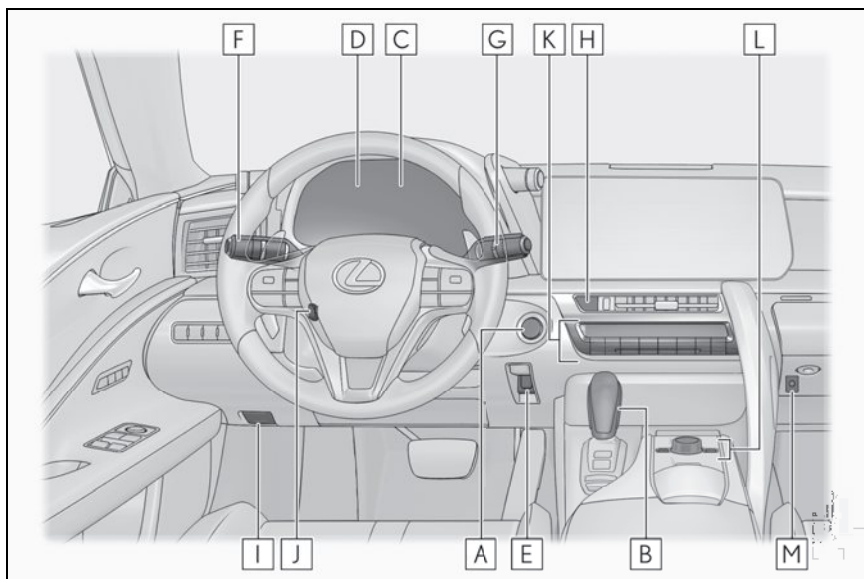
Driving Comfort	
Energy Monitor/Consumption Screen	62
Basic Operation of Multimedia System	65
Navigation *	66
Connecting a Smartphone or Communication Device *	70
Basic Operation of Audio System *	75
Lexus Climate Concierge	80
Automatic Air Conditioning System *	81
Interior features	
Starting Voice Control *	84
Connecting to the USB Port	88
Garage Door Opener	89
Safety Connect	
Safety Connect	94
Remote Connect	97
Service Connect	98
Opening and Closing	
Door Locks	99
What to do if...	
List of Warning/Indicator Lights	101
If the electronic key does not operate properly	105
If the engine <hybrid system> doesn't start	107

*: These features may be operated by Starting Voice Control (See P.84)

Depending on specifications, the vehicle shown in the illustration may differ from your vehicle in terms of equipment.

Pictorial Index

Instrument panel

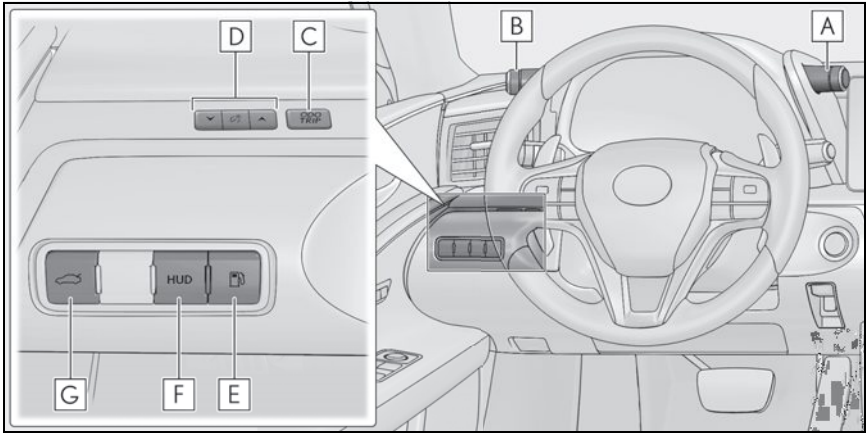


- A Engine switch <Power switch>** P.24
 - Starting the engine <hybrid system>/changing the mode P.24, 25
 - Emergency stop of the engine <hybrid system>P.26
 - When the engine <hybrid system> will not start.....P.106
 - Warning messages*
- B Shift lever** P.28
 - Changing the shift position..... P.28
 - Precautions against towing*
- C Meters***
 - Reading the meters/adjusting the instrument panel lights*
 - Warning lights/indicator lights P.101
 - When the warning lights come on*
- D Multi-information display** P.36
 - Display.....P.36
 - When the warning messages are displayed*

E	Parking brake switch	P.33
	Applying/releasing.....	P.33
	Precautions against winter season*	
	Warning buzzer/message*	
F	Turn signal lever	P.32
	Headlight switch	P.41
	Headlights/parking lights/tail lights/daytime running lights.....	P.41
	AHB (Automatic High Beam).....	P.42
G	Windshield wiper and washer switch	P.44
	Usage.....	P.44
	Adding washer fluid*	
	Warning messages*	
H	Emergency flasher switch *	
I	Hood lock release lever *	
J	Tilt and telescopic steering control switch *	
	Adjustment*	
	Driving position memory.....	P.22
K	Air conditioning system	P.81
	Usage.....	P.82
	Rear window defogger.....	P.81
L	Audio system	P.75
M	Trunk opener main switch *	

*: Refer to "OWNER'S MANUAL".

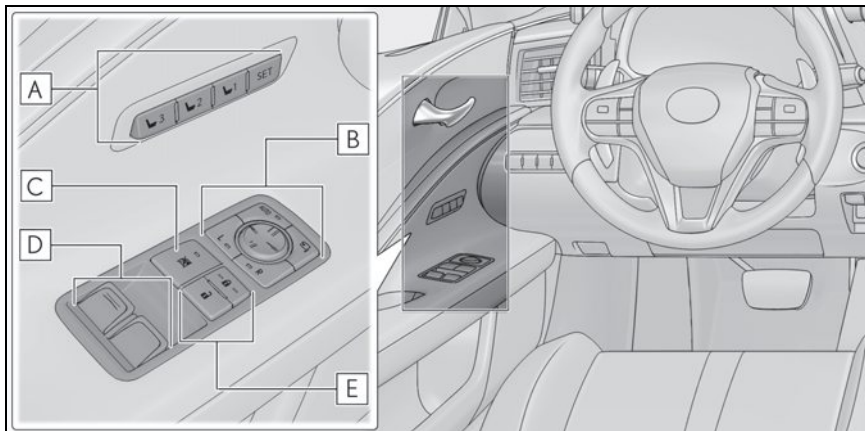
■ Switches



A	Driving mode select switch	P.53
B	VSC OFF ^{*1} /snow mode switch.....	P.30
C	Odometer/trip meter/trip meter reset button ^{*1}	
D	Instrument panel light control switches ^{*1}	
E	Fuel filler door opener switch ^{*1}	
F	HUD (Head-up display) switch ^{*2}	P.38
G	Trunk opener switch.....	P.105

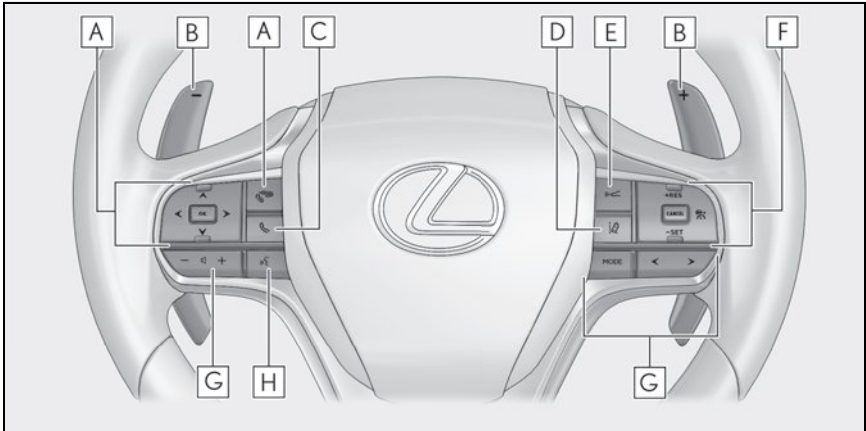
*1: Refer to "OWNER'S MANUAL".

*2: If equipped



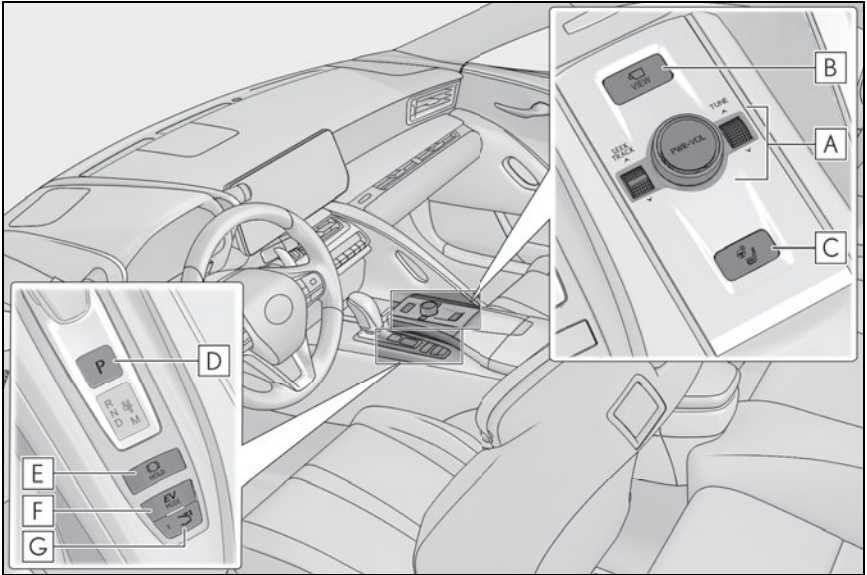
- A** Driving position memory switches P.22
- B** Outside rear view mirror switches *
- C** Window lock switch *
- D** Power window switches *
- E** Door lock switches P.99

*: Refer to "OWNER'S MANUAL".



A	Meter control switches	P.36
B	Paddle shift switches	P.30, 31
C	Telephone switch.....	P.72
D	LTA (Lane Tracing Assist) switch.....	P.46
E	Vehicle-to-vehicle distance switch.....	P.49
F	Cruise control switches	
	Dynamic radar cruise control with full-speed range.....	P.47
G	Audio remote control switches.....	P.72, 77, 79
H	Talk switch	P.72

► Except Convertible



A Audio control switches *1

B Camera switch *1

C Seat air conditioning display switch *2

D P position switch..... P.28

E Brake hold switch P.35

F EV drive mode switch *3 P.27

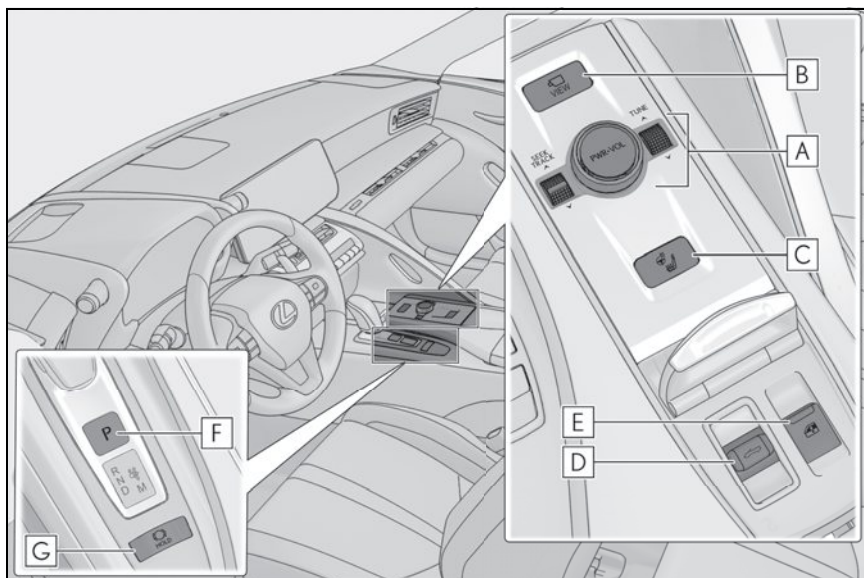
G Active rear wing switch *3 P.59

*1: Refer to "MULTIMEDIA OWNER'S MANUAL".

*2: Refer to "OWNER'S MANUAL".

*3: If equipped

► Convertible

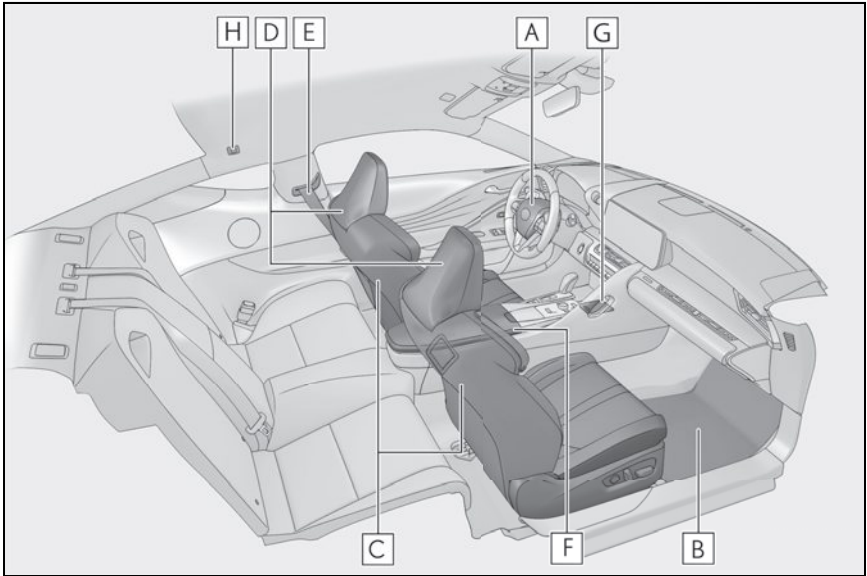


- A** Audio control switches *1
- B** Camera switch *1
- C** Seat air conditioning display switch *2
- D** Roof switch P.60
- E** All window control switch *2
- F** P position switch P.28
- G** Brake hold switch P.35

*1: Refer to "MULTIMEDIA OWNER'S MANUAL".

*2: Refer to "OWNER'S MANUAL".

■ Interior



A SRS airbags *1

B Floor mats P.13

C Front seats P.21

D Head restraints *1

E Seat belts *1

F Console box/auxiliary box *1

G Cup holder *1

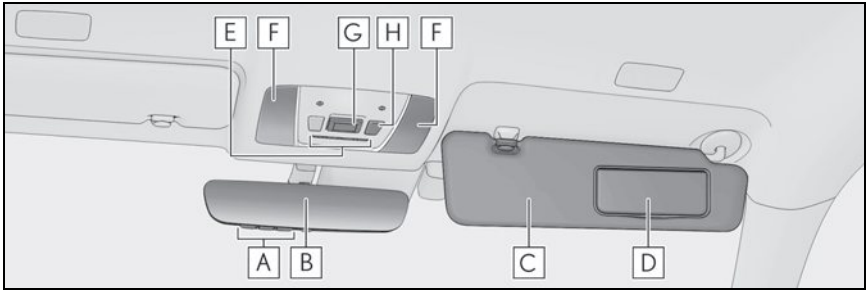
H Coat hooks *1,2

*1: Refer to "OWNER'S MANUAL".

*2: If equipped

■ Ceiling

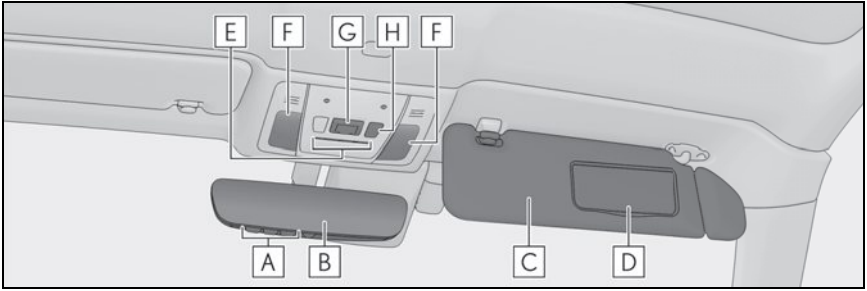
► Except Convertible



- A** Garage door opener buttons P.89
- B** Inside rear view mirror *
- C** Sun visors *
- D** Vanity mirrors *
- E** Seat lights *
Shift lever light *
- F** Personal lights *
- G** "SOS" button P.94
- H** Door-linked personal light switch *

*: Refer to "OWNER'S MANUAL".

► Convertible

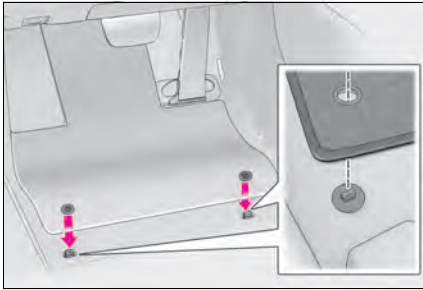


- A** Garage door opener buttons..... P.89
- B** Inside rear view mirror*
- C** Sun visors*
- D** Vanity mirrors*
- E** Seat lights*
Shift lever light *
- F** Personal lights *
- G** "SOS" button..... P.94
- H** Door-linked personal light switch*

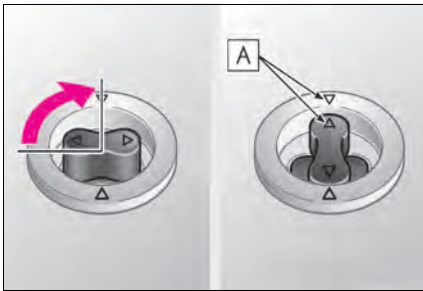
*: Refer to "OWNER'S MANUAL".

Floor Mat Installation

Use only floor mats designed specifically for vehicles of the same model and model year as your vehicle. Fix them securely in place onto the carpet.



- 1 Insert the retaining hooks (clips) into the floor mat eyelets.



- 2 Turn the upper knob of each retaining hook (clip) to secure the floor mats in place.

Always align the \triangle marks **A**.

The shape of the retaining hooks (clips) may differ from that shown in the illustration.

Hybrid System (LC500h)

Your vehicle is a hybrid electric vehicle. It has characteristics different from conventional vehicles. Be sure you are closely familiar with the characteristics of your vehicle, and operate it with care.

The hybrid system combines the use of a gasoline engine and an electric motor (traction motor) according to driving conditions, improving fuel efficiency and reducing exhaust emissions.

For details, refer to the “OWNER’S MANUAL”.

Hybrid System Indicator



A Charge area

Shows regeneration* status. Regenerated energy will be used to charge the hybrid battery (traction battery).

*: When used in this manual, “regeneration” refers to the conversion of energy created by the movement of the vehicle into electrical energy.

B Hybrid Eco area

Shows that gasoline engine power is not being used very often.

The gasoline engine will automatically stop and restart under various conditions.

C Eco area

Shows that the vehicle is being driven in an Eco-friendly manner.

By keeping the indicator needle within Eco area, more Eco-friendly driving can be achieved.

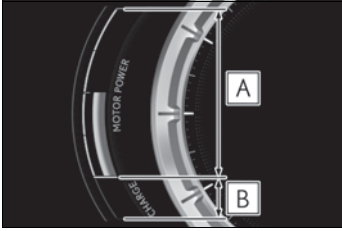
D Power area

Shows that an Eco-friendly driving range is being exceeded (during full power driving etc.)

In the following situation, the Hybrid System Indicator does not operate.

- The shift position is in other than D or M.
- The driving mode is other than Eco mode.

Motor power display



A Motor power area

Shows that the power of the motor assists the engine.

B Charge area

Shows regeneration* status. Regenerated energy will be used to charge the hybrid battery (traction battery).

*: When used in this manual, “regeneration” refers to the conversion of energy created by the movement of the vehicle into electrical energy.

Hybrid battery (traction battery) charge

If the shift position is in N, the hybrid battery (traction battery) will not be charged. To help prevent the battery from discharging, avoid leaving the N position selected for an extended period of time.

Regenerative braking

In the following situations, kinetic energy is converted to electric energy and deceleration force can be obtained in conjunction with the recharging of the hybrid battery (traction battery).

- The accelerator pedal is released while driving with the shift position in D or M.
- The brake pedal is depressed while driving with the shift position in D or M.

Sounds and vibrations specific to a hybrid vehicle

Because there is no engine sound or vibration, it is easy to mistake the hybrid vehicle for being off when it is actually still running, as indicated by the “READY” indicator being illuminated. For safety, make sure to always shift the shift position to P and apply the parking brake when parked.

The following sounds or vibrations may occur when the hybrid system is operating and are not a malfunction:

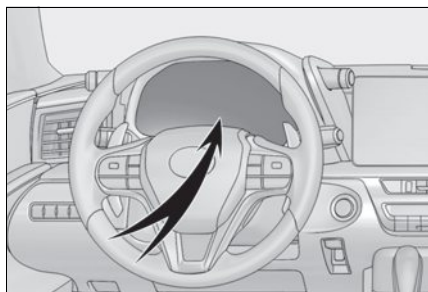
- Motor sounds may be heard from the engine compartment.
- Sounds may be heard from the hybrid battery (traction battery) behind the rear seats when the hybrid system starts or stops.
- Relay operating sounds such as a snap or soft clank will be emitted from the hybrid battery (traction battery), behind the rear seats, when the hybrid system is started or stopped.
- Sounds from the hybrid system may be heard when the trunk lid is open.
- Sounds may be heard from the transmission when the gasoline engine starts or stops, when driving at low speeds, or during idling.
- Engine sounds may be heard when accelerating sharply.
- Sounds may be heard due to regenerative braking when the brake pedal is depressed or as the accelerator pedal is released.
- Vibration may be felt when the gasoline engine starts or stops.
- Cooling fan sounds may be heard from the air intake vents under the rear seats.

Running out of fuel

When the vehicle has run out of fuel and the hybrid system cannot be started, refuel the vehicle with at least enough gasoline to make the low fuel level warning light go off. If there is only a small amount of fuel, the hybrid system may not be able to start. (The standard amount of fuel is about 3.3 gal. [12.6 L, 2.8 Imp.gal.], when the vehicle is on a level surface. This value may vary when the vehicle is on a slope. Add extra fuel when the vehicle is inclined.)

Hybrid warning message

A message is automatically displayed when a malfunction occurs in the hybrid system or an improper operation is attempted.



If a warning message is shown on the multi-information display, read the message and follow the instructions.

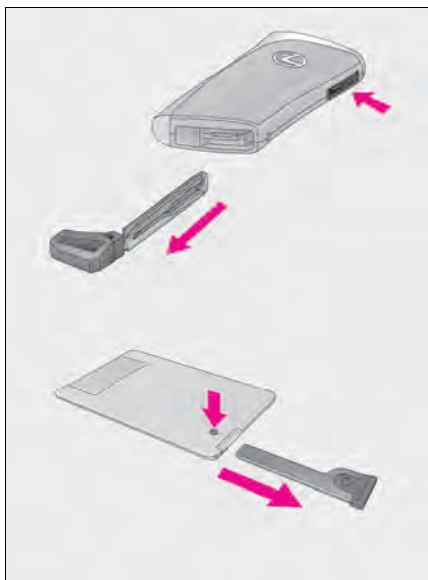
Keys

Electronic key



- Smart access system with push-button start (→P.19)
- Wireless remote control

Mechanical key

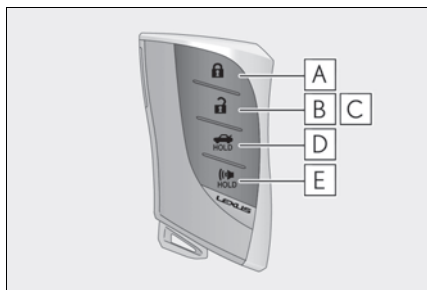


To take out the mechanical key, push the release button and take the key out.

The mechanical key can only be inserted in one direction, as the key only has grooves on one side. If the key cannot be inserted in a lock cylinder, turn it over and re-attempt to insert it.

After using the mechanical key, store it in the electronic key. Carry the mechanical key together with the electronic key. If the electronic key battery is depleted or the entry function does not operate properly, you will need the mechanical key.

Wireless remote control



- A** Locks the doors
- B** Unlocks the doors
- C** Opens the windows (press and hold)*
- D** Opens the trunk
- E** Sounds the alarm

*: This setting must be customized at your Lexus dealer.

Smart Access System with Push-button Start

The following operations can be performed simply by carrying the electronic key (including the card key) on your person, for example in your pocket. The driver should always carry the electronic key.

For details on starting the engine <hybrid system>, see page 24.

Unlocking and locking the doors from the outside



- 1 Push the depression on the front edge of the driver's door handle to unlock the door. Push the depression on the front edge of the passenger's door handle to unlock both side doors.*

The outside door handles will be extended.

The extended outside door handles are automatically retracted in approximately 60 seconds.

The doors cannot be unlocked for 3 seconds after the doors are locked.

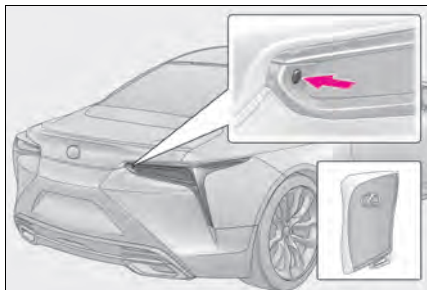
*: The door unlock settings can be changed.

- 2 Push the rear edge of the extended door handle to lock the doors.

If the outside door handles are extended, they will be retracted.

After locking the doors, check that the door is securely locked with the door lock indicator. (→P.99)

Opening the trunk



Press the button.

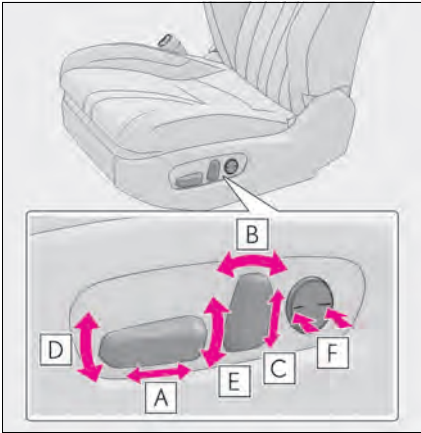
When both side doors are unlocked using one of the following methods, the trunk can be opened without the electronic key:

- Entry function
- Wireless remote control
- Door lock switches
- Automatic door unlocking system
- Mechanical key

For details on what to do when the electronic key does not operate properly, see page 105.

Front Seats

Adjustment procedure



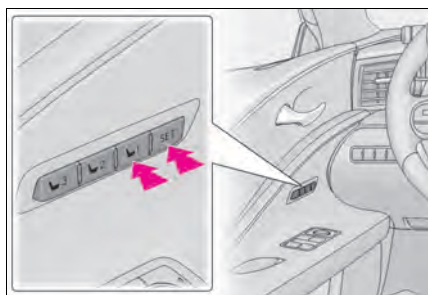
- A** Seat position adjustment
- B** Seatback angle adjustment
- C** Head restraint height adjustment (if equipped)
- D** Seat cushion (front) angle adjustment
- E** Vertical height adjustment
- F** Lumbar support adjustment

Driving Position Memory

This feature automatically adjusts the positions of the driver's seat, steering wheel, outside rear view mirrors and head-up display (if equipped) to make entering and exiting the vehicle easier or to suit your preferences.

Recording a driving position into memory

- 1 Turn the engine switch <power switch> to ON.
- 2 Check that the shift position is in P.
- 3 Adjust the driver's seat, steering wheel, outside rear view mirrors and head-up display to the desired positions.

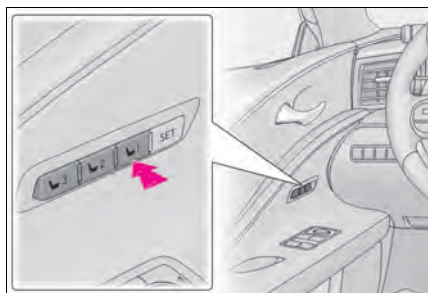


- 4 While pressing the "SET" button, or within 3 seconds after the "SET" button is pressed, press button "1", "2" or "3" until the buzzer sounds.

If the selected button has already been preset, the previously recorded position will be overwritten.

Recalling a driving position

- 1 Turn the engine switch <power switch> to ON.
- 2 Check that the shift position is in P.



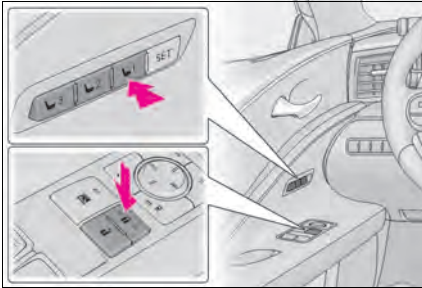
- 3 Press one of the buttons for the driving position you want to recall until the buzzer sounds.

Memory recall function (driver's side only)

Each electronic key (including a card key) can be registered to recall your preferred driving position.

■ Registering procedure

- 1 Turn the engine switch <power switch> to ON.
- 2 Check that the shift position is in P.
- 3 Recall the driving position that you want to record.



- 4 While pressing the recalled button, press and hold the door lock switch (either lock or unlock) until the buzzer sounds.

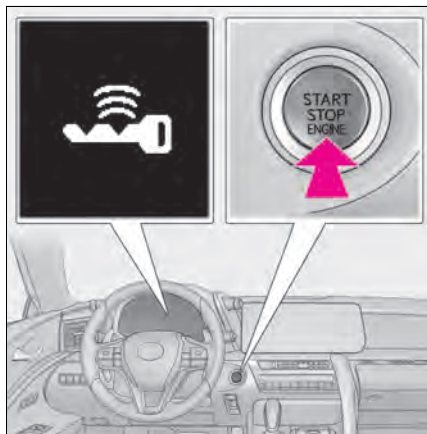
If the button could not be registered, the buzzer sounds continuously for approximately 3 seconds.

Engine (Ignition) Switch (LC500)/Power (Ignition) Switch (LC500h)

Performing the following operations when carrying the electronic key on your person starts the engine <hybrid system> or changes engine switch <power switch> modes.

The illustrations are for LC500, and some design may differ for LC500h.


Starting the engine <hybrid system>



- 1 Press the parking brake switch to check that the parking brake is set. (→P.33)

The parking brake indicator will come on.

- 2 Firmly depress the brake pedal.

Except Convertible:  and a message will be displayed on the multi-information display.

If it is not displayed, the engine <hybrid system> cannot be started.

LC500h: When the shift position is N, the hybrid system cannot start.

Shift the shift position to P when starting the hybrid system.

- 3 Press the engine switch <power switch> shortly and firmly.

When operating the engine switch <power switch>, one short, firm press is enough. It is not necessary to press and hold the switch.

LC500: The engine will crank until it starts or for up to 30 seconds, whichever is less. Continue depressing the brake pedal until the engine is completely started.

LC500h: If the “READY” indicator turns on, the hybrid system will operate normally. Continue depressing the brake pedal until the “READY” indicator is illuminated.

The engine <hybrid system> can be started from any engine switch <power switch> mode.

- 4 LC500h: Check that the “READY” indicator is illuminated.

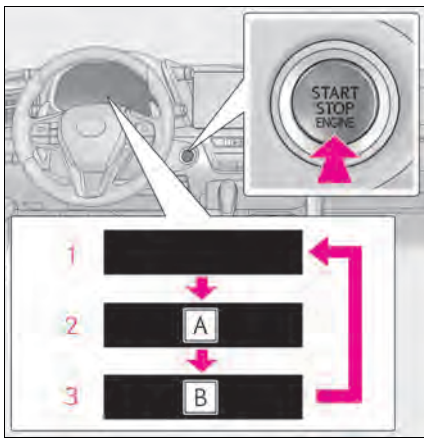
The vehicle will not move when the “READY” indicator is off.

Stopping the engine <hybrid system>

- 1 Stop the vehicle completely.
- 2 If the parking brake is in manual mode, set the parking brake. (→P.33)
- 3 Press the P position switch.
- 4 Press the engine switch <power switch>.
- 5 Check that “ACCESSORY” or “IGNITION ON” is not shown on the meter.

Changing engine switch <power switch> modes

Modes can be changed by pressing the engine switch <power switch> with the brake pedal released. (The mode changes each time the switch is pressed.)



A “ACCESSORY”

B “IGNITION ON”

1 Off

The emergency flashers can be used.

2 ACC

Some electrical components such as the audio system can be used.

“ACCESSORY” will be displayed on the meter.

3 ON

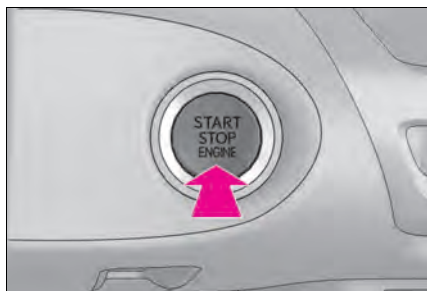
All electrical components can be used.

“IGNITION ON” will be displayed on the meter.

If your vehicle has to be stopped in an emergency

Only in an emergency, such as if it becomes impossible to stop the vehicle in the normal way, stop the vehicle using the following procedure:

- 1** Steadily step on the brake pedal with both feet and firmly depress it.
Do not pump the brake pedal repeatedly as this will increase the effort required to slow the vehicle.
- 2** Shift the shift position to N.
- ▶ If the shift position is shifted to N**
- 3** After slowing down, stop the vehicle in a safe place by the road.
- 4** Stop the engine <hybrid system>.
- ▶ If the shift position cannot be shifted to N**
- 3** Keep depressing the brake pedal with both feet to reduce vehicle speed as much as possible.

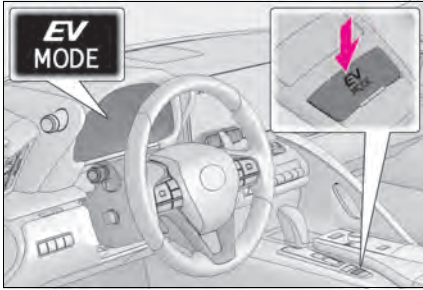


- 4** To stop the engine <hybrid system>, press and hold the engine switch <power switch> for 2 consecutive seconds or more, or press it briefly 3 times or more in succession.

- 5** Stop the vehicle in a safe place by the road.

EV Drive Mode (LC500h)

In EV drive mode, electric power is supplied by the hybrid battery (traction battery), and only the electric motor (traction motor) is used to drive the vehicle.

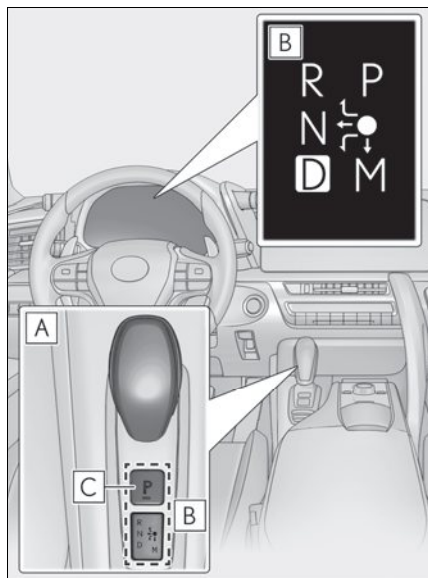


Turns EV drive mode on/off

When EV drive mode is turned on, the EV drive mode indicator will come on. Pressing the switch when in EV drive mode will return the vehicle to normal driving (using the gasoline engine and electric motor [traction motor]).

Automatic Transmission (LC500)/Hybrid Transmission (LC500h)

Shift position display and how to change the shift position



A Shift lever

Operate the shift lever gently and securely in the direction of the arrow on the shift position indicator.

To shift to N, slide the shift lever in the direction of the arrow and hold it.

Release the shift lever after each shifting operation to allow it to return to its regular position (●).

Shifting to M is only possible when the shift position is in D.

When shifting from P to N, D or R, from N, D, M or R to P, from D or M to R, or from R to D, ensure that the brake pedal is being depressed and the vehicle is stationary.

B Shift position indicator

Meter display:

The current shift position is highlighted.

When any shift position other than D or M is selected, the arrow toward M and M position indicator are displayed in gray.

Shift lever display:

The current shift position is illuminated.

When selecting the shift position, make sure that the shift position has been changed to the desired position by checking the shift position indicator provided on the instrument cluster.

C P position switch

Fully stop the vehicle and set the parking brake, and then press the P position switch.

When the shift position is changed to P, the switch illuminates.

Check that the shift position indicator shows P.

Shift position purpose and functions

Shift position	Objective or function
P	Parking the vehicle/starting the engine <hybrid system>
R	Reversing
N	Neutral (Condition in which the power is not transmitted)
D	Normal driving ^{*1}
M	M mode driving ^{*2} (→P.31)

^{*1}: To improve fuel efficiency and reduce noise, set the shift position in D for normal driving. You can choose gear range suitable for your driving situation by operating the paddle shift switches.

^{*2}: Any gear range can be fixed when driving in M mode.

Keeping the shift position in N without activating the automatic P position selection function

- 1 Operate the shift lever and change the shift position to N when the engine is running <hybrid system is operating>.
- 2 Return the shift lever to its regular position (●).
- 3 Operate the shift lever to N and hold it there until the buzzer sounds.
- 4 Press the engine switch <power switch> within 5 seconds after the buzzer sounds.

The engine <hybrid system> stops with the shift position in N.*

Make sure to check that the buzzer sounds and “Holding N Push P Switch When Done” is displayed on the multi-information display.

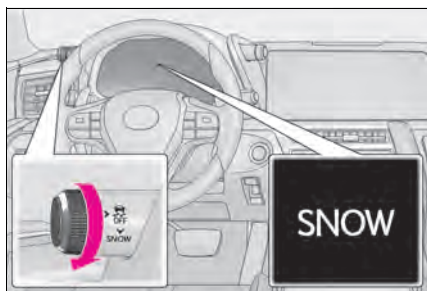
*: To keep this state, do not operate the engine switch <power switch>. If the engine switch <power switch> is operated repeatedly, the engine switch <power switch> will turn off after the shift position has automatically changed to P.

Selecting the driving mode

■ Driving mode

→P.53


■ Snow mode



Snow mode can be selected to suit the conditions when driving on slippery road surfaces, such as on snow.

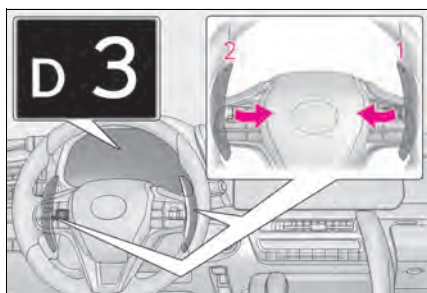
Turn the  switch backward.

The snow mode indicator comes on.

Turn the  switch backward again to return to normal mode.

Selecting shift ranges in the D position

When the “-” paddle shift switch is operated, the shift range switches to a range that enables engine braking force that is suitable to driving conditions. When the “+” paddle shift switch is operated, the shift range switches to a range that is one range higher than the current range.



1 Upshifting

2 Downshifting

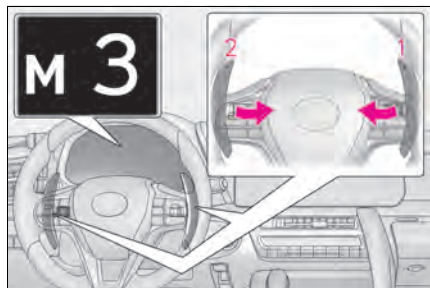
The selected shift range, from D1 to D10, will be displayed in the meter.

Meter display	Function
D2 - D10	A gear in the range between D1 and the selected shift range is automatically chosen depending on vehicle speed and driving conditions
D1	Setting the shift range at D1

A lower shift range will provide greater engine braking forces than a higher shift range.

Selecting gears in the M position

To enter M mode, shift the shift position to M. Gears can be selected by operating the paddle shift switches, allowing you to drive in the gear of your choosing.



1 Upshifting

2 Downshifting

The gear changes once every time the paddle shift switch is operated.

The selected gear, from M1 to M10, will be fixed and displayed in the meter.

When in the M position, the gear will not change unless the paddle shift switches are operated.

However, even when in the M position, the gears will be automatically changed in the following situation:

● LC500

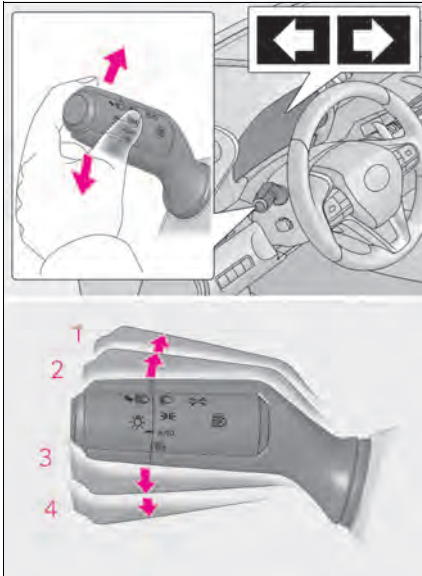
- When vehicle speed drops (downshift only).
- When it is necessary to protect the engine or automatic transmission when the engine coolant temperature is low, the automatic transmission fluid temperature is high or low or other reasons.

● LC500h

- When vehicle speed drops (downshift only).
- When vehicle speed increases (upshift only).
- When the accelerator pedal is firmly depressed.
- When it is necessary to protect the transmission when the transmission fluid temperature is high or low, or other reasons.

Also, the gear will not shift when the vehicle speed is low, even if an upshift operation is performed.

Turn Signal Lever



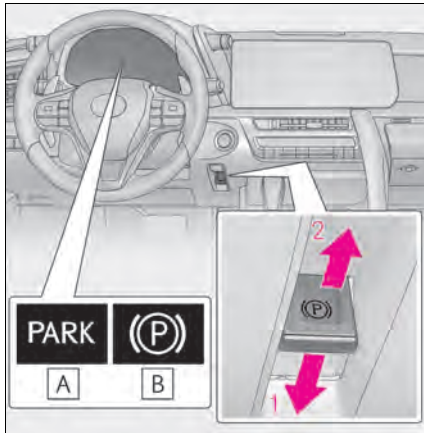
- 1** Right turn
- 2** Lane change to the right (move the lever partway and release it)
The right hand signals will flash 3 times.
- 3** Lane change to the left (move the lever partway and release it)
The left hand signals will flash 3 times.
- 4** Left turn

Parking Brake

The parking brake can be set or released automatically or manually.

Using the manual mode

The parking brake can be set and released manually.



A U.S.A.

B Canada

1 Push the switch to set the parking brake

The parking brake indicator light will turn on.

Press and hold the parking brake switch if an emergency occurs and it is necessary to operate the parking brake while driving.

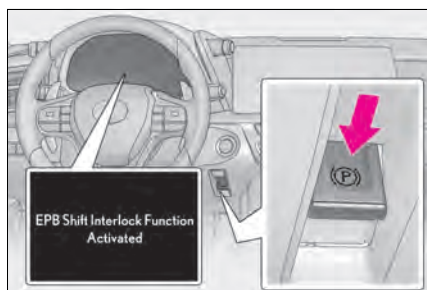
2 Pull the switch to release the parking brake

- Operate the parking brake switch while depressing the brake pedal.
- Using the parking brake automatic release function, the parking brake can be released by depressing the accelerator pedal. When using this function, slowly depress the accelerator pedal.

Make sure that the parking brake indicator light turn off.

Turning the automatic mode on

In automatic mode, the parking brake can be set or released automatically according to shift lever operation. Also, even in automatic mode, the parking brake can be set or released manually.



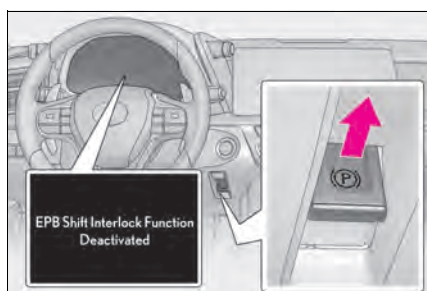
While the vehicle is stopped, press and hold the parking brake switch until a message is shown on the multi-information display

When the automatic mode is turned on, the parking brake operates as follows.

- When the shift position is shifted from P, the parking brake will be released, and the parking brake indicator light turn off.
- When the shift position is shifted to P, the parking brake will be set, and the parking brake indicator light turn on.

Operate the shift lever and P position switch with the vehicle stopped and the brake pedal depressed.

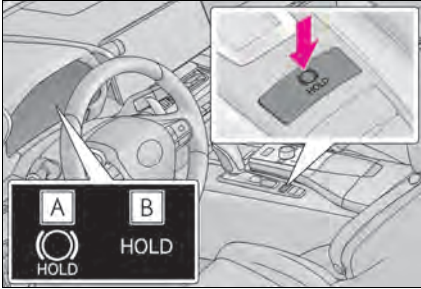
Turning the automatic mode off



While the vehicle is stopped, pull and hold the parking brake switch until a message is shown on the multi-information display

Brake Hold

The brake hold system keeps the brake applied when the shift position is in D, M or N with the system on and the brake pedal has been depressed to stop the vehicle. The system releases the brake when the accelerator pedal is depressed with the shift position in D or M to allow smooth start off.



Turns the brake hold system on

The brake hold standby indicator **A** (green) comes on. While the system is holding the brake, the brake hold operated indicator **B** (yellow) comes on.

Multi-information Display

The multi-information display presents the driver with a variety of vehicle data.

Display

► When the main meter is in the center position

Displays various drive information on the main meter.

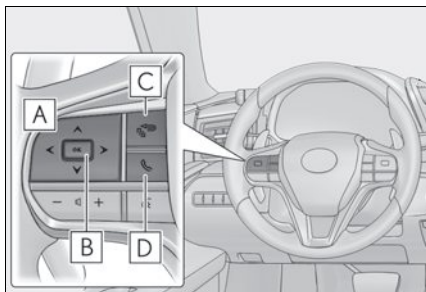
Some of the contents which are displayed when the main meter is in the side position cannot be displayed.

► When the main meter is in the side position



Selecting a menu icon displays a variety of vehicle data or allows vehicle settings to be customized.

Changing the meter display



- A** < / > : Switch menu
▲ / ▼ : Change displayed content, scroll up/down the screen and move the cursor up/down
- B** Press: Enter/Set
Press and hold: Reset
- C** Return to the previous screen and move the main meter
- D** Call sending/receiving and history display

Linked with the hands-free system, sending or receiving call is displayed. For details regarding the hands-free system, refer to "MULTIMEDIA OWNER'S MANUAL".

Menu icons



Drive information

Select to display various drive data.



Navigation system-linked display

Select to display the following navigation system-linked information.

- Route guidance
- Compass display



Audio system-linked display

Select to enable selection of an audio source or track on the meter using the meter control switches.



Driving support system information display

Select to display the operational status of the following systems:

- LTA (Lane Tracing Assist) (→P.46)
- Dynamic radar cruise control with full-speed range (→P.47)
- RSA (Road Sign Assist) (if equipped)



Warning message display

Select to display warning messages and measures to be taken if a malfunction is detected.



Settings display

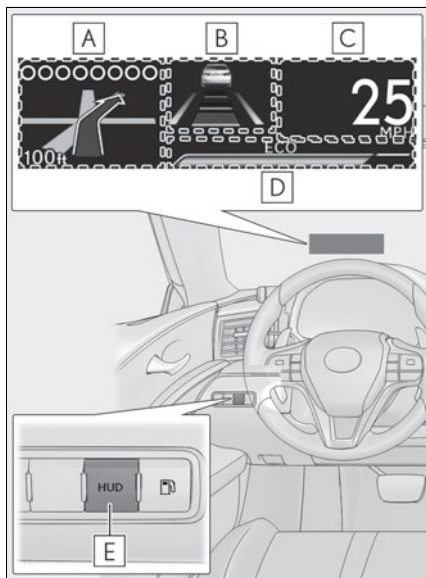
Select to change the meter display settings

If a problem is detected in any of the vehicle's systems, a warning message is shown on the multi-information display.

Head-up Display (if equipped)

The head-up display is linked to the meters and navigation system and projects a variety of information in front of the driver, such as the current vehicle speed and route guidance to a set destination.

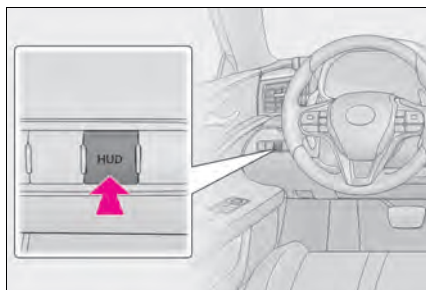
System components



- A** Navigation system-linked display area
RSA (Road Sign Assist) display area (if equipped)
- B** Driving support system status display area
- C** Vehicle speed display
- D** Information display area
- E** HUD (Head-up display) switch

Using the head-up display

Enabling/Disabling the head-up display



Pressing the switch turns the head-up display on/off.

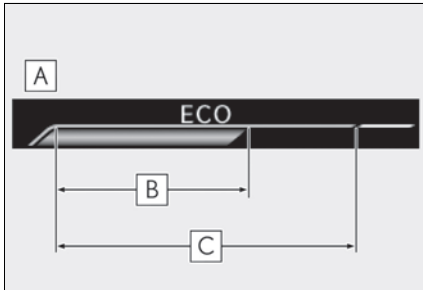
■ Changing settings of the head-up display

Select  on the multi-information display to change the following settings:

- Display brightness/position
Select to adjust the brightness and position of the head-up display.
- Eco Driving Indicator/tachometer (LC500)
Select to display Eco Driving Indicator, tachometer or no content.
- Hybrid System Indicator/motor power display/tachometer (LC500h)
Select to display Hybrid System Indicator, tachometer or no content.
Motor power display can be displayed when Hybrid System Indicator is selected while the driving mode (→P.53) is other than the Eco drive mode.
- Display content
Select to enable/disable the following items:
 - Route guidance to destination
 - Driving assist system status
 - Compass
 - Audio system operation status
- Display angle
Select to adjust the angle of the head-up display.

Eco Driving Indicator/tachometer (LC500)

■ Eco Driving Indicator



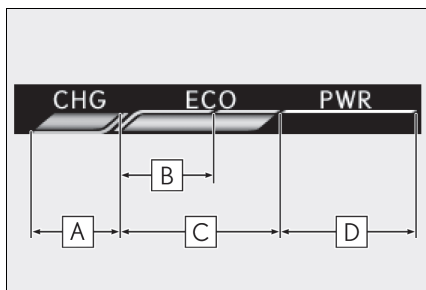
- A** Eco Driving Indicator Zone Display
- B** Eco driving ratio based on acceleration
- C** Zone of Eco driving
Displayed content is the same as that displayed on the multi-information display (Eco Driving Indicator).

■ Tachometer

Displays the engine speed in revolutions per minute.

Hybrid System Indicator/motor power display/tachometer (LC500h)

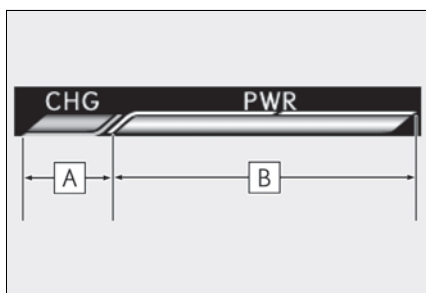
Hybrid System Indicator



- A** Charge area
- B** Hybrid Eco area
- C** Eco area
- D** Power area

Displayed content is the same as that displayed on the meter (Hybrid System Indicator). For details, refer to P.14.

Motor power display



- A** Charge area
- B** Power area

Displayed content is the same as that displayed on the meter (Motor power display). For details, refer to P.15.

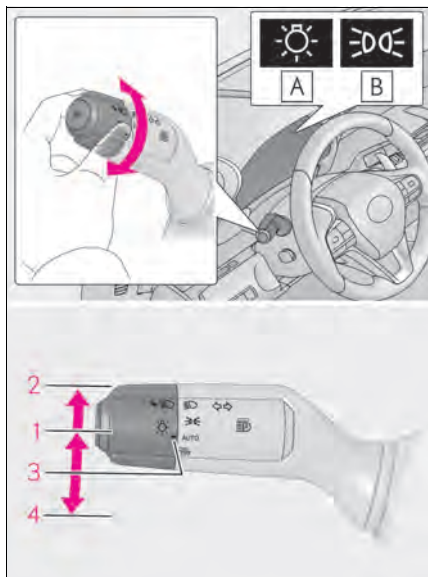
Tachometer

Displays the engine speed in revolutions per minute.

The head-up display may seem dark and hard to see when viewed through sunglasses, especially polarized sunglasses.




Adjust the brightness of the head-up display or remove your sunglasses.

Headlight Switch



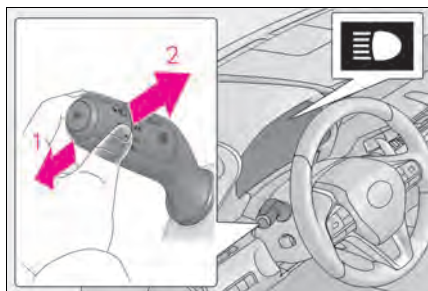
A U.S.A.

B Canada

- 1**  The side marker, parking, tail, license plate, instrument panel lights, and daytime running lights turn on.
- 2**  The headlights and all the lights listed above (except daytime running lights) turn on.
- 3** **AUTO** The headlights, daytime running lights and all the lights listed above turn on and off automatically.
- 4**  Off*

*: U.S.A. only

Turning on the high beam headlights

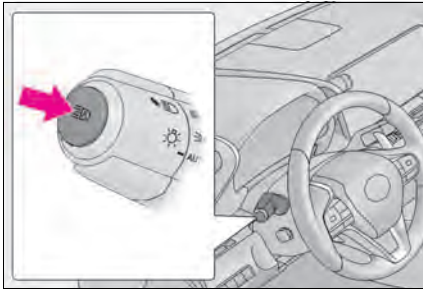


- 1** With the headlights on, push the lever away from you to turn on the high beams.
Pull the lever toward you to the center position to turn the high beams off.
- 2** Pull the lever toward you and release it to flash the high beams once.
You can flash the high beams with the headlights on or off.

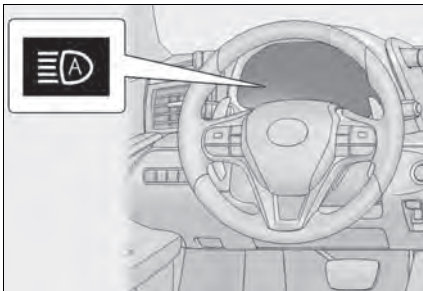
AHB (Automatic High Beam)


The Automatic High Beam uses an in-vehicle front camera to assess the brightness of streetlights, the lights of vehicle ahead, etc., and automatically turns the high beam on or off as necessary.

Activating the Automatic High Beam system



- 1 Press the Automatic High Beam switch.



- 2 Turn the headlight switch to the  or AUTO position.

The AHB indicator will come on when the system is operating.

Turning the high beam on/off manually

■ Switching to high beam

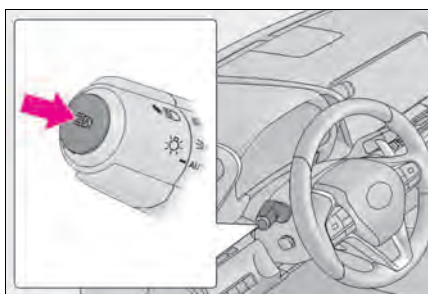


Push the lever away from you.

The AHB indicator will turn off and the high beam indicator will turn on.

Pull the lever to its original position to activate the Automatic High Beam system again.

■ Switching to low beam

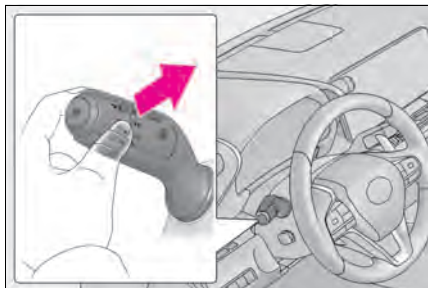


Press the Automatic High Beam switch.

The AHB indicator will turn off.

Press the switch to activate the Automatic High Beam system again.

■ Temporarily switching to the low beams



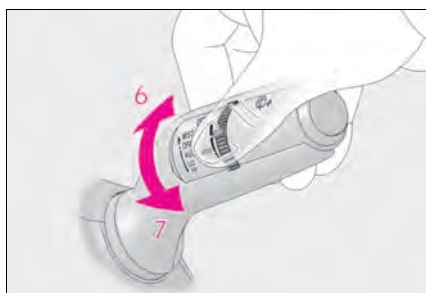
Pull the lever toward you and then return it to its original position.

The high beams remain on while the lever is pulled toward you, however, after the lever is returned to its original position, the low beams remain on for a certain amount of time. Afterwards, the Automatic High Beam will be activated again.

Windshield Wipers and Washer



- 1** OFF (U.S.A.) or ○ (Canada)
Off
- 2** AUTO Rain-sensing wiper operation
- 3** LO (U.S.A.) or ▼ (Canada)
Low speed wiper operation
- 4** HI (U.S.A.) or ▼ (Canada)
High speed wiper operation
- 5** MIST (U.S.A.) or △ (Canada)
Temporary operation



When "AUTO" is selected, the sensor sensitivity can be adjusted by turning the switch ring.

- 6** Increases the sensitivity
- 7** Decreases the sensitivity



- 8**  Washer/wiper dual operation

Pulling the lever operates the wipers and washer.

The wipers will automatically operate a couple of times after the washer squirts.

(After operating several times, the wipers operate once more time after a short delay to prevent dripping. However, the dripping prevention does not operate while the vehicle is moving.)

Lexus Safety System + 2.5

The Lexus Safety System + 2.5 consists of the following drive assist systems and contributes to a safe and comfortable driving experience:

Driving assist system

■ PCS (Pre-Collision System)

The pre-collision system uses a radar sensor and front camera to detect objects* in front of the vehicle. When the system determines that the possibility of a frontal collision with an object is high, a warning operates to urge the driver to take evasive action and the potential brake pressure is increased to help the driver avoid the collision. If the system determines that the possibility of a frontal collision with an object is extremely high, the brakes are automatically applied to help avoid the collision or help reduce the impact of the collision.

*: For details, refer to the "OWNER'S MANUAL".

■ LTA (Lane Tracing Assist)

→P.46

■ AHB (Automatic High Beam)

→P.42

■ RSA (Road Sign Assist) (if equipped)

The RSA system recognizes specific road signs using the front camera and/or navigation system (when speed limit information is available) to provide information to the driver via the display.

If the system judges that the vehicle is being driven over the speed limit, performing prohibited actions, etc. according to the recognized road signs, it notifies the driver through a visual notification and notification buzzer.

■ Dynamic radar cruise control with full-speed range

→P.47

LTA (Lane Tracing Assist)

While driving on a road with clear white (yellow) lane lines, the LTA system warns the driver if the vehicle may deviate from the current lane or course^{*}, and also can slightly operate the steering wheel to help avoid deviation from the lane or course^{*}. Also, while the dynamic radar cruise control with full-speed range (→P.47) is operating, this system will operate the steering wheel to maintain the vehicle's lane position.

The LTA system recognizes white (yellow) lane lines or a course^{*} using the front camera. Additionally, it detects preceding vehicles using the front camera and radar.

^{*}: Boundary between asphalt and the side of the road, such as grass, soil, or a curb

Turning LTA system on



Press the LTA switch to turn the LTA system on.

The LTA indicator illuminates and a message is displayed on the multi-information display.

Press the LTA switch again to turn the LTA system off.

When the LTA system is turned on or off, operation of the LTA system continues in the same condition the next time the engine <hybrid system> is started.

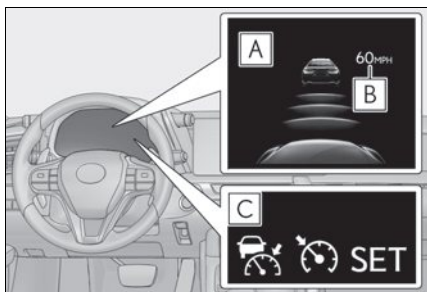
Dynamic Radar Cruise Control with Full-Speed Range

In vehicle-to-vehicle distance control mode, the vehicle automatically accelerates, decelerates and stops to match the speed changes of the preceding vehicle even if the accelerator pedal is not depressed. In constant speed control mode, the vehicle runs at a fixed speed.

Use the dynamic radar cruise control with full-speed range on freeways and highways.

System components

■ Meter display

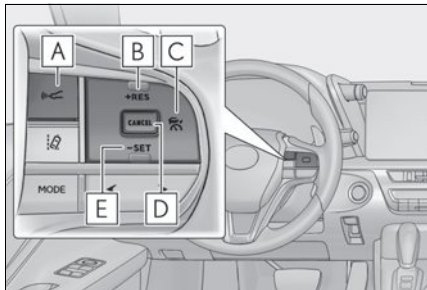


A Multi-information display

B Set speed

C Indicators

■ Operation switches



A Vehicle-to-vehicle distance switch

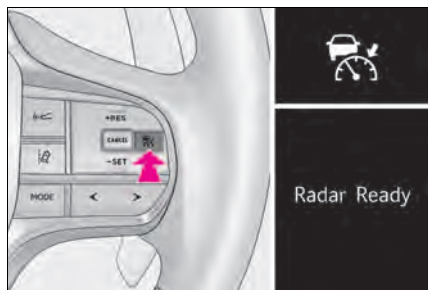
B "+RES" switch

C Cruise control main switch

D Cancel switch

E "-SET" switch

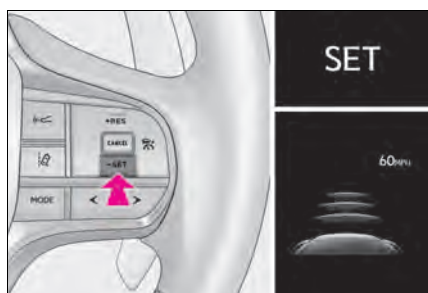
Setting the vehicle speed (vehicle-to-vehicle distance control mode)



- 1 Press the cruise control main switch to activate the cruise control.

Dynamic radar cruise control indicator will come on and a message will be displayed on the multi-information display. Press the switch again to deactivate the cruise control.

If the cruise control main switch is pressed and held for 1.5 seconds or more, the system turns on in constant speed control mode. (→P.51)



- 2 Accelerate or decelerate, with accelerator pedal operation, to the desired vehicle speed (at or above approximately 20 mph [30 km/h]) and press the "SET" switch to set the speed.

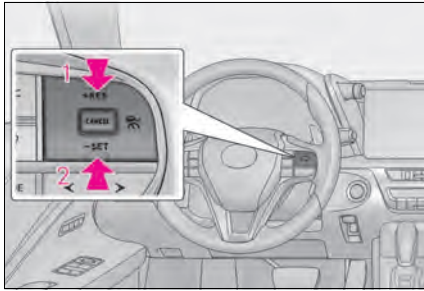
Cruise control "SET" indicator will come on.

The vehicle speed at the moment the switch is released becomes the set speed.

Adjusting the set speed

● Adjusting the set speed by the switch

To change the set speed, press the "+RES" or "-SET" switch until the desired set speed is displayed.



1 Increases the speed (Except when the vehicle has been stopped by system control in vehicle-to-vehicle distance control mode)

2 Decreases the speed

Fine adjustment: Press the switch.

Large adjustment: Press and hold the switch to change the speed, and release when the desired speed is reached.

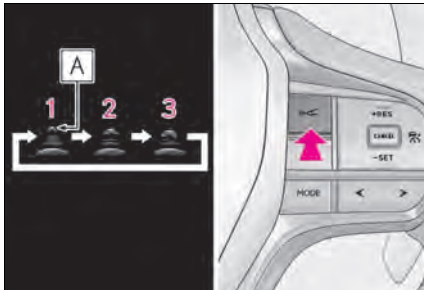
● Increasing the set speed by the accelerator pedal

1 Accelerate with accelerator pedal operation to the desired vehicle speed

2 Press the "-SET" switch

Changing the vehicle-to-vehicle distance (vehicle-to-vehicle distance control mode)

Pressing the switch changes the vehicle-to-vehicle distance as follows:



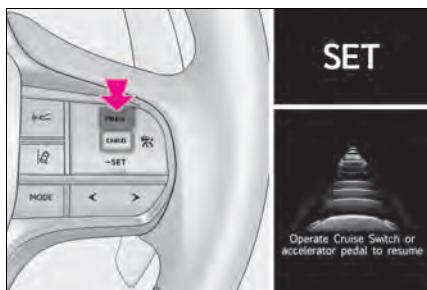
1 Long

2 Medium

3 Short

If a vehicle is running ahead of you, the preceding vehicle mark **A** will also be displayed.

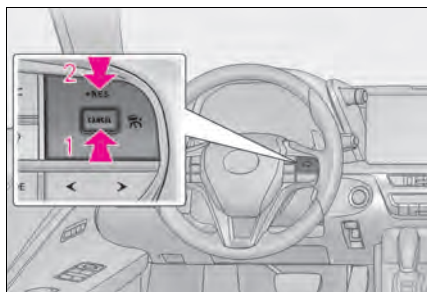
Resuming follow-up cruising when the vehicle has been stopped by system control (vehicle-to-vehicle distance control mode)



After the vehicle ahead of you starts off, press the “+RES” switch.

Your vehicle will also resume follow-up cruising if the accelerator pedal is depressed after the vehicle ahead of you starts off.

Canceling and resuming the speed control

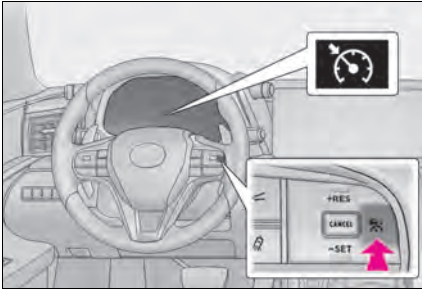


1 Pressing the cancel switch cancels the speed control.

The speed control is also canceled when the brake pedal is depressed. (When the vehicle has been stopped by system control, depressing the brake pedal does not cancel the setting.)

2 Pressing the “+RES” switch resumes the cruise control and returns vehicle speed to the set speed.

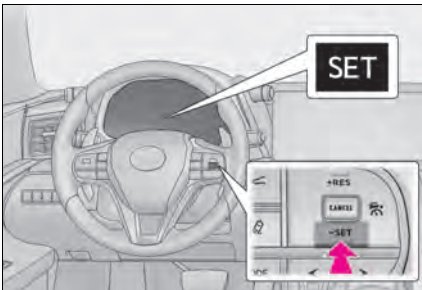
Selecting constant speed control mode



- 1 With the cruise control off, press and hold the cruise control main switch for 1.5 seconds or more.

Immediately after the switch is pressed, the dynamic radar cruise control indicator will come on. Afterwards, it switches to the cruise control indicator.

Switching to constant speed control mode is only possible when operating the switch with the cruise control off.



- 2 Accelerate or decelerate, with accelerator pedal operation, to the desired vehicle speed (at or above approximately 20 mph [30 km/h]) and press the “-SET” switch to set the speed.






Cruise control “SET” indicator will come on.

The vehicle speed at the moment the switch is released becomes the set speed.

Intuitive Parking Assist

The distance from your vehicle to nearby obstacles when parallel parking or maneuvering into a garage is measured by the sensors and communicated via the Center Display and a buzzer. Always check the surrounding area when using this system.

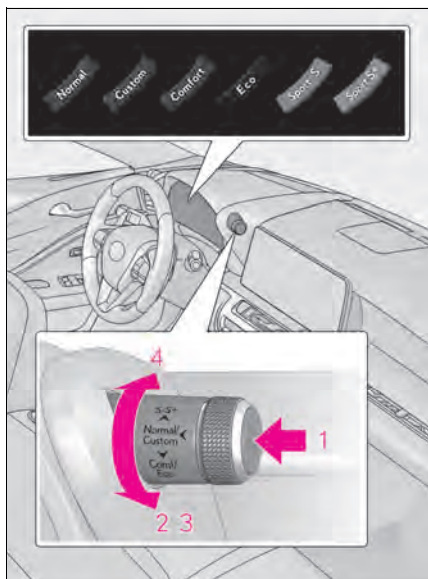
Turning intuitive parking assist on/off

- 1 Press  or  of the meter control switches, and select .
- 2 Press  or  of the meter control switches, and select "Parking Assist", and press "OK".

When the intuitive parking assist turn on, the intuitive parking assist indicator comes on to inform the driver that the system is operational.

Driving Mode Select Switch

The driving modes can be selected to suit driving condition.



1 Normal mode/Custom mode

Normal mode and custom mode are selected by pressing the driving mode select switch. Each time the switch is pressed, the driving mode changes between normal mode and custom mode. When custom mode is selected, the “Custom” indicator comes on.

Press the switch to change the driving mode to normal mode when not in normal mode.

• Normal mode

Provides an optimal balance of fuel economy, quietness, and dynamic performance. Suitable for city driving.

When the shift position is in D, an appropriate gear for sporty driving may automatically be selected according to driver performance and driving conditions.

• Custom mode

Allows you to drive with the power train, chassis and air conditioning system functions set to your preferred settings.

Custom mode settings can only be changed on the drive mode customization display of the Center Display.

2 Comfort mode

By controlling the suspension, riding comfort is further enhanced. Suitable for city driving.

When not in comfort mode and the driving mode select switch is turned forward, the “Comfort” indicator comes on.

3 Eco drive mode

Helps the driver accelerate in an eco-friendly manner and improve fuel economy through moderate throttle characteristics and by controlling the operation of the air conditioning system (heating/cooling).

When in comfort mode, if the driving mode select switch is turned forward, the “Eco” indicator comes on.

4 Sport mode

- SPORT S mode

Controls the transmission and engine to provide quick, powerful acceleration. This mode is suitable for when agile driving response is desired, such as when driving on roads with many curves.

When not in SPORT S mode, if the driving mode select switch is turned backward, the "Sport S" indicator comes on.

- SPORT S+ mode

Provides earlier downshift timing than SPORT S mode in order to maintain a high engine speed and provides faster gear changes. This mode also changes the steering feel, suspension control and VDIM* control, making it suitable for powerful sporty driving.

When in SPORT S mode, if the driving mode select switch is turned backward, the "Sport S+" indicator comes on.

*: For details, refer to the "OWNER'S MANUAL".

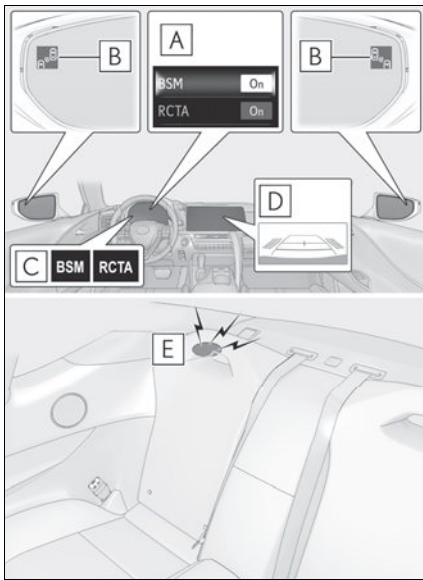
BSM (Blind Spot Monitor)

The Blind Spot Monitor is a system that has 2 functions;

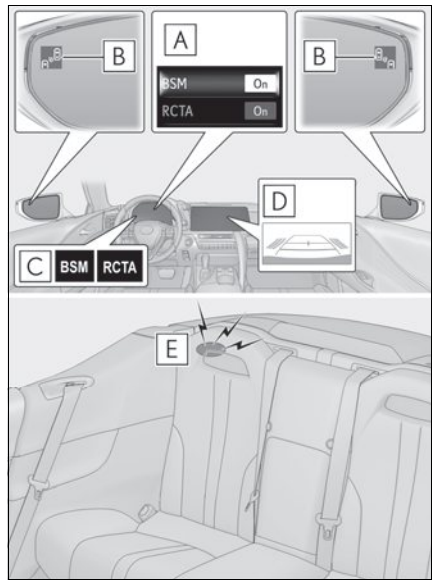
- The BSM (Blind Spot Monitor) function
Assists the driver in making a decision when changing lanes
- The RCTA (Rear Cross Traffic Alert) function
Assists the driver when backing up

These functions use same sensors.

► Except Convertible



► Convertible



A Multi-information display

Turning the BSM function/RCTA function on/off.

The RCTA function is available when the BSM function is on.

B Outside rear view mirror indicators

BSM function:

When a vehicle is detected in a blind spot of the outside rear view mirrors or approaching rapidly from behind into a blind spot, the outside rear view mirror indicator on the detected side will illuminate. If the turn signal lever is operated toward the detected side, the outside rear view mirror indicator will flash.

RCTA function:

When a vehicle approaching from the right or left at the rear of the vehicle is detected, both outside rear view mirror indicators will flash.

C BSM indicator/RCTA indicator

When the BSM function/RCTA function is turned on, the indicator comes on.

D Monitor screen display (RCTA function only)

If a vehicle approaching from the right or left at the rear of the vehicle is detected, the RCTA icon for the detected side will be displayed on the monitor screen. This illustration shows an example of a vehicle approaching from both sides of the vehicle.

E RCTA buzzer (RCTA function only)

If a vehicle approaching from the right or left at the rear of the vehicle is detected, a buzzer will sound. The buzzer also sounds for approximately 1 second immediately after the BSM function is operated to turn the system on.

Tire Pressure Warning System

Your vehicle is equipped with a tire pressure warning system that uses tire pressure warning valves and transmitters to detect low tire inflation pressure before serious problems arise.

The tire inflation pressure display function

▶ Except Convertible




▶ Convertible

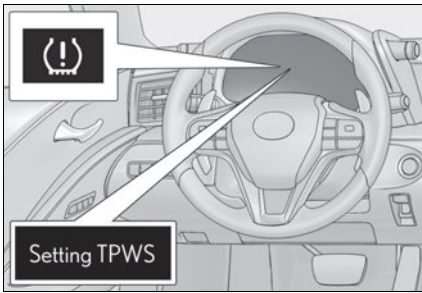


The tire pressure detected by the tire pressure warning system can be displayed on the multi-information display.

The illustration used is intended as an example, and may differ from the image that is actually displayed on the multi-information display.

Initializing the tire pressure warning system

- 1 Turn the engine switch <power switch> to ON.
- 2 Press **<** or **>** of the meter control switches and select .
- 3 Press **▲** or **▼** of the meter control switches and select "Vehicle Settings", then press "OK".
- 4 Press **▲** or **▼** of the meter control switches and select "TPWS SET", then press "OK".
- 5 Press **▲** or **▼** of the meter control switches and select "Set tire pressure". Then press and hold "OK" until the tire pressure warning light starts blinking.



A message is displayed on the multi-information display. Also, "--" is displayed for inflation pressure of each tire on the multi-information display while the tire pressure warning system determines the position.

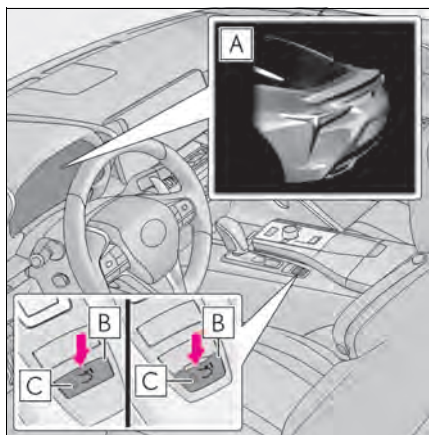
- 6 Drive the vehicle at approximately 25 mph (40 km/h) or more for approximately 10 to 30 minutes.

When initialization is complete, the inflation pressure of each tire will be displayed on the multi-information display.

Active Rear Wing (if equipped)

The vehicle is equipped with an active rear wing that operates automatically while the vehicle is being driven. This active rear wing enhances aerodynamic performance, especially at high speeds, contributing to a more stable ride.

The active rear wing can be controlled manually using a switch.



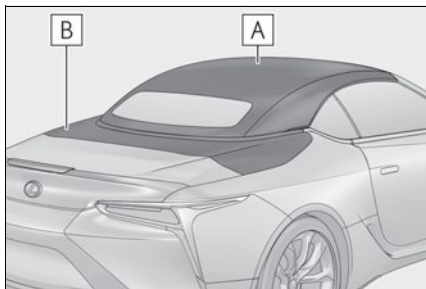
- A** Multi-information display (→P.36)
Displays the status of the active rear wing.
- B** Active rear wing switch
Operates the active rear wing manually.
- C** Indicator
Illuminates when the active rear wing is raised and turns off when it is retracted.

Soft Top Roof (Convertible)

The soft top roof can be opened or closed by the switch operation.

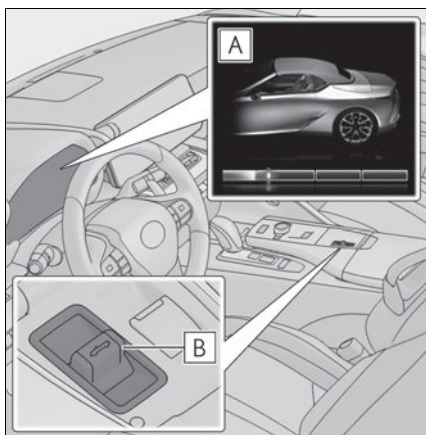
System components

► Exterior



- A** Soft top roof
- B** Luggage cover

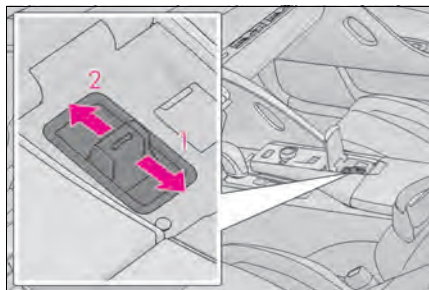
► Interior



- A** Multi-information display (→P.36)
Displays opening/closing status of the soft top roof.
- B** Roof switch

Opening or closing the soft top roof

- 1 Open the palm rest.
- 2 Operate the switch.



- 1 Open
- 2 Close

The side windows and rear quarter windows operate linked to opening or closing the soft top roof.

Opening/closing status of the soft top roof will be displayed on the multi-information display.

When the operation of the soft top roof has completed, the bar will turn to gray and the buzzer will sound.

To close the side windows and rear quarter windows, press the power window switch.

Energy Monitor (If equipped)/Consumption Screen

You can view the status of your hybrid system (LC500h) and fuel consumption information on the multi-information display and Center Display.


Energy monitor (LC500h)

■ Display procedure

▶ Multi-information display

Press **<** or **>** of the meter control switches and select **i**, and then press **▲** or **▼** to select the energy monitor display.

▶ Center Display

- 1 Select  on the main menu.
- 2 Select "Energy flow".

■ Reading the display

The arrows will appear in accordance with the energy flow. When there is no energy flow, arrows will not be displayed.

The color of the arrows will change as follows

Blue: When the hybrid battery (traction battery) is regenerated or charged.

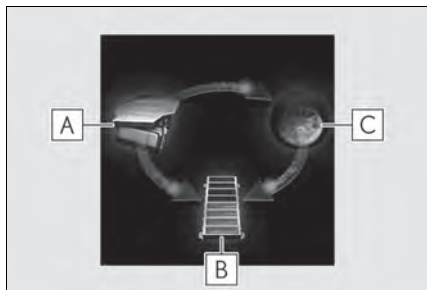
Yellow^{*1}/Orange^{*2}: When the hybrid battery (traction battery) is in use.

Red: When the gasoline engine is in use.

*1: Multi-information display

*2: Center Display

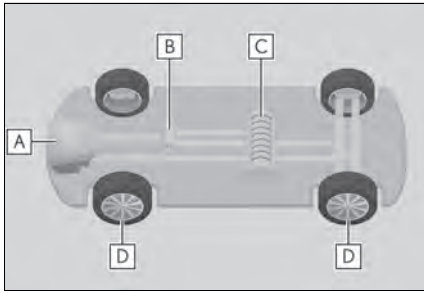
▶ Multi-information display



The image shows all the arrows as an example. The actual display will vary depending on conditions.

- A** Gasoline engine
- B** Hybrid battery (traction battery)
- C** Tires

► Center Display




The image shows all the arrows as an example. The actual display will vary depending on conditions.

- A** Gasoline engine
- B** Electric motor (traction motor)
- C** Hybrid battery (traction battery)
- D** Tires

Current screen

■ Display procedure

- 1 Select  on the main menu.
- 2 Select "Trip information".
- 3 Select "Current".


■ Display



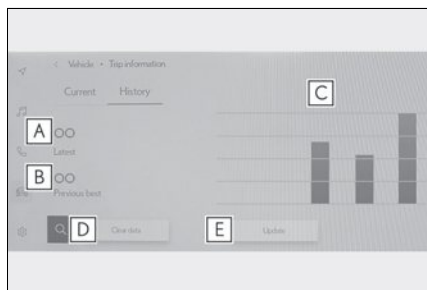
- A** Resetting the history data
- B** Fuel consumption in the past 15 minutes
- C** Current fuel consumption
- D** Average vehicle speed since the engine <hybrid system> was started.
- E** Trip range
- F** Elapsed time since the engine <hybrid system> was started.

History screen

■ Display procedure

- 1 Select  on the main menu.
- 2 Select "Trip information".
- 3 Select "History".

■ Display



- A** Latest fuel consumption
- B** Best recorded fuel consumption
- C** Previous fuel consumption record
- D** Resetting the history data
- E** Updating the latest fuel consumption data

Basic Operation of Multimedia System

Map scrolling operation

The map can be moved and a touched point can be set as the center of the map screen.

■ Flick/drag operation



The map screen can be moved by touching, dragging or flicking it.

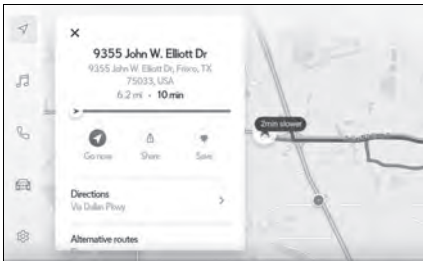
Touch [Recenter] to return to the center of the map to the current position.

■ Touch and hold operation

If a desired point on the map screen is touched and held, the full route map screen to the selected point will be displayed.



1 Touch and hold the desired point.



2 Full route map screen will be displayed for the selected point.

Navigation (if equipped)

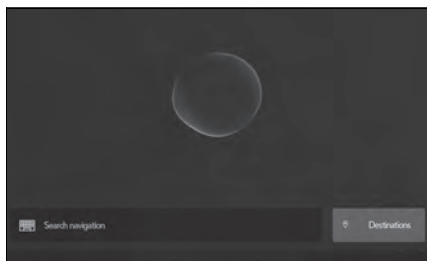
The navigation system indicates your present position and assists in locating a desired destination.

Destination search screen

■ Searching for a destination using the keyboard

A destination can be searched for by entering keywords.

1 Touch [] or [] on the map screen.



2 Touch [].

3 Select [Navigation].



4 Enter characters using the keyboard.

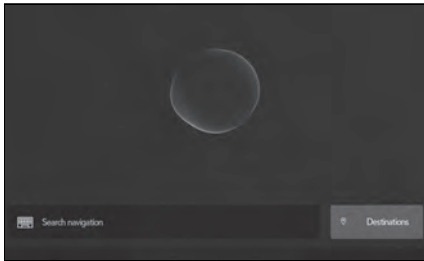
5 Touch [Go].

6 Touch the desired item from the list.

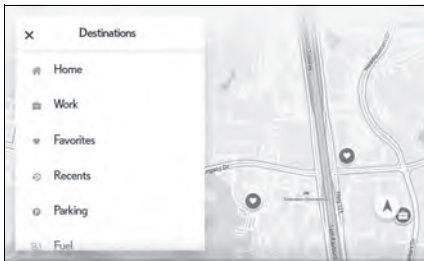
■ Searching for a destination by category

A destination can be searched for from a list of categories.

1 Touch [📍] or [🔍] on the map screen.



2 Touch [Destinations].



3 Touch the desired search method.

[Home]: Touch to set the registered home as the destination. A point must be registered as home before using this function.*

[Work]: Touch to set the registered workplace as the destination. A point must be registered as a workplace before using this function.*

[Favorites]: Touch to set a registered favorite as the destination. A point must be registered as a favorite before using this function.

[Recents]: Touch to set a destination from the destination history as the destination.

[Sent to car]: Sent to car enables customer to send a destination or POI to the vehicle from Lexus app.

[Parking]: Touch to search for a nearby parking lot to set as a destination.

[Fuel]: Touch to search for a fuel station to set as a destination.

[Food]: Touch to search for a restaurant to set as a destination.

[Hospitals]: Touch to search for a hospital to set as a destination.

When setting a business as a destination, if your estimated time of arrival is outside of business hours or near closing time, a notification asking to confirm the destination will be displayed.

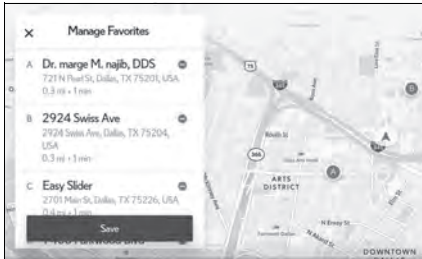
*: Home and Work must be added via Lexus app.

4 Touch the desired destination from the list.

► Editing the favorites list

The favorites list can be edited.

- 1 Touch [📍] or [🔍] on the map screen.
- 2 Touch [Destinations].
- 3 Touch [Favorites].

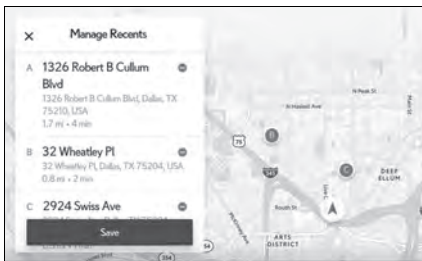


- 5 Touch [Save].

► Editing the destination history

The destination history can be edited.

- 1 Touch [📍] or [🔍] on the map screen.
- 2 Touch [Destinations].
- 3 Touch [Recents].



- 5 Touch [Save].

- 4 Touch [✏️].

Touch [⊖] to delete a favorite.

The favorites list editing screen will be displayed.

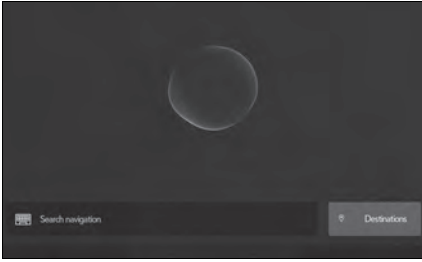
- 4 Touch [✏️].

The destination history editing screen will be displayed.

Touch [⊖] to delete a destination history item.

■ Searching for a destination using voice controls

1 Touch [] or [] on the map screen.



2 Say the keyword you wish to use for the search.


3 Touch or Use Voice Command for Desired result from List.


Connecting a Smartphone or Communication Device

Registering a Bluetooth® device from the multimedia system

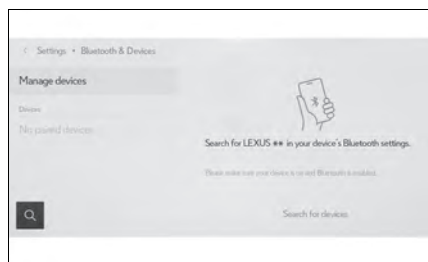
A cellular phone or portable device must be registered in order to use hands-free calling or Bluetooth® audio. Once registration is complete, Bluetooth® will automatically be connected each time the multimedia system is started.

When Apple CarPlay or Android Auto is connected via USB, the device will be automatically registered.

If no Bluetooth® device is connected, the registration screen can also be displayed by pressing and holding the [] switch on the steering.

- 1 Touch [] from the main menu.
- 2 Touch [Bluetooth & Devices].
- If no device is registered, proceed to Procedure 4.
- 3 Touch [Add another device].
- While a device is connected to the multimedia system, the confirmation screen for disconnecting the device may be displayed. Disconnect the device to perform registration.

- 4 Touch [Search for devices].



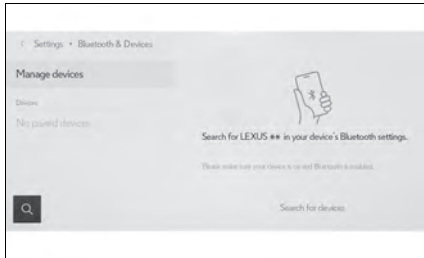
- 5 Touch the device to register from the main area.
- The Bluetooth® address may be displayed instead of the device name.
 - Certain models of Bluetooth® devices may not be displayed in the device list, unless a certain screen is displayed on the Bluetooth® device. Refer to the Bluetooth® device's instruction manual for details.

- 6 Check that the displayed PIN code matches the PIN code displayed on the Bluetooth® device, and then touch [OK].
- Some Bluetooth® devices may need to be operated to complete registration.
 - You may be prompted to install the Lexus Application on your phone. Please follow the displayed instruction.
 - Primary device settings may be displayed. Perform the operation according to the screen guidance.
 - The Apple CarPlay or Android Auto settings may be displayed. The Apple CarPlay or Android Auto screen will be displayed if the use of either is enabled.
 - A message indicating that connection is complete is displayed, and the name of the registered Bluetooth® device is displayed in the sub menu.
 - If an operation failed screen is displayed, follow the operation instructions on the screen.

■ Registering from a Bluetooth® device

If the Bluetooth® device cannot be found by searching with the multimedia system, register by searching for the multimedia system from the Bluetooth® device.

- 1 Touch [⚙️] from the main menu.
 - 2 Touch [Bluetooth & Devices].
- If no device is registered, proceed to Procedure 4.
- 3 Touch [Add another device].
- While a device is connected to the multimedia system, the confirmation screen for disconnecting the device may be displayed. Disconnect the device to perform registration.



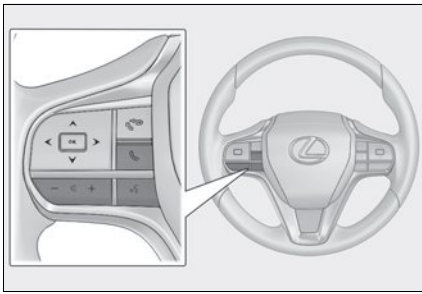
- 4 Register the multimedia system from the Bluetooth® device to be used.
- Perform the operation according to the operating procedure of the Bluetooth® device.
 - Be sure to display this Bluetooth® connection screen before performing registration on the Bluetooth® device.

5 Check that the displayed PIN code matches the PIN code displayed on the Bluetooth® device, and then touch [OK].

- Some Bluetooth® devices may need to be operated to complete registration.
- You may be prompted to install the Lexus Application on your phone. Please follow the displayed instruction.
- If you have already added your User Profile, adding the first Bluetooth device will automatically make it your primary connecting device.
- The Apple CarPlay or Android Auto settings may be displayed. The Apple CarPlay or Android Auto screen will be displayed if the use of either is enabled.
- A message indicating that connection is complete is displayed, and the name of the registered Bluetooth® device is displayed in the sub menu.
- If an operation failed screen is displayed, follow the operation instructions on the screen.

■ Operating with the steering switches

Some hands-free call functions can be operated from the steering switches, such as receiving or making calls. The steering switch functions change depending on the status of the multimedia system.



- Operate the switches as necessary.
[+] switch

Increases the ringtone volume or receiver volume.

Press and hold to adjust continuously.

- [-] switch

Decreases the ringtone volume or receiver volume.


Press and hold to adjust continuously.

- [] switch

Calls can be made using voice command.


To end Intelligent Assistant, press and hold the talk switch.

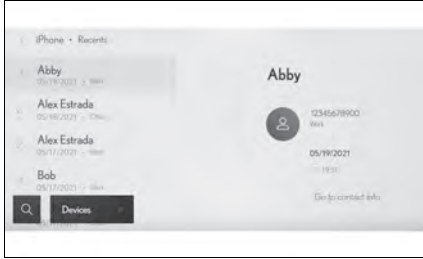
- [] switch

- While a call cannot be made, displays call history screen or phone menu.
- Phone calls can be made when [] is displayed on the phone screen.
- While making a call or during a call, ends the call.
- While receiving a call or during call waiting, answers the call.

Making calls from call history

Calls can be made to phone numbers that have been recorded in the call history as outgoing or incoming calls.


- 1 Touch [] from the main menu.
- 2 Touch [Recents].

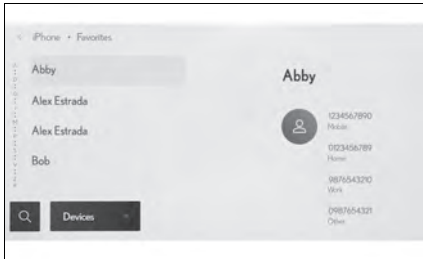


- 3 Select the contact.
 - For phone numbers that are not registered in the phonebook, the phone number will be displayed.
- 4 Touch the desired phone number.

Making calls from the favorites list

Make a call from your favorites list.


- 1 Touch [] from the main menu.
- 2 Touch [Favorites].

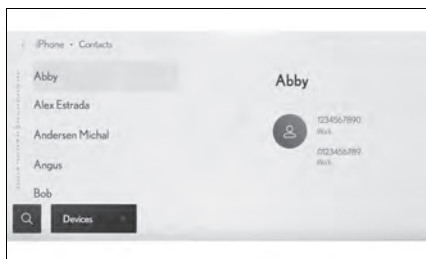


- 3 Select the person you want to call from your favorites list.
- 4 Touch the desired phone number.

Making calls from contacts

Make a call from the contacts registered on the multimedia system.

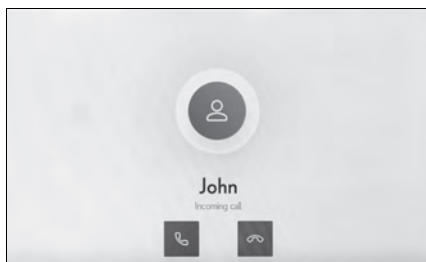
- 1 Touch [] from the main menu.
- 2 Touch [Contacts].
- 3 Select a contact.





- 4 Touch the desired phone number.

Answering calls

When there is an incoming call, the incoming call sounds and the incoming call screen or incoming call notification is displayed.



- 1 Answer the call by doing one of the following.
 - Touch [].
 - Press the [] switch on the steering.

Making calls from the message function


Hands-free calls can be made using the message function.

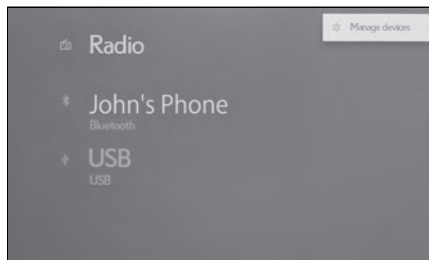
- 1 Touch the blue number to make a call.
- Consecutive numbers may be recognized as phone numbers. In addition, some phone numbers, such as phone numbers from other countries, may not be recognized.

Basic Operation of Audio System

Changing the audio source

Source can be changed to radio, USB, etc.


- 1 Touch [] from the main menu.
- 2 Touch [Sources].



- 3 Touch the source you wish to select.

Listening to the radio

Switch to your preferred frequency or service and listen to the radio.

- 1 Touch [] from the main menu.
- 2 Touch [Sources].
- 3 Touch [Radio].
- 4 Select the station selection method or service as necessary.

[Favorites]: Select a broadcasting station from those registered as favorites.

[Tune]: Select the broadcasting station by entering a frequency with the numeric keypad.

[FM Radio]: Switches to FM mode. The FM station list, the 3 most recently listened stations, and the receivable FM broadcasting stations are displayed.

[AM Radio]: Switches to AM mode. The AM station list, the 3 most recently listened stations, and the receivable AM broadcasting stations are displayed.

[SiriusXM]: Switches to SiriusXM Radio mode. Displays [For You] and contents/Super Categories/[All channels]/[Listening History]. (This function is not made available in some countries or areas)


- 5 Select the broadcasting station from the station list or genre.


- 6 Operate the radio that is being received as necessary.
- Operating AM/FM from the screen



[Ch]: Touch [-] or [+] to search for the receivable broadcasting stations. Touch and hold to jump to the next frequency with available radio signal. When released, the broadcasting station closest to that position with the best reception sensitivity is selected automatically.

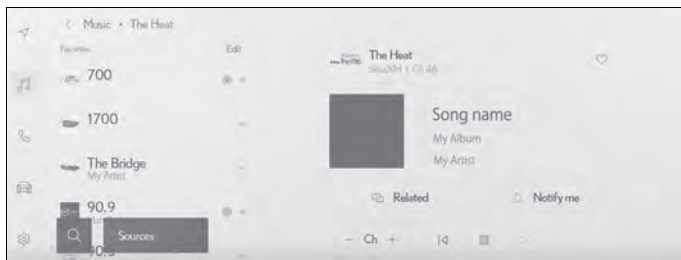
[Scan]: SEEK UP and output the audio of the detected station for 10 sec. This is repeated.

[ 1 2]: Displayed when Multicast CH is supported in FM mode. Touch to display the SPS channel list. The mode can be changed to the displayed SPS channel list.

[]: Registers the currently received broadcasting station in favorites. When registered, touch to cancel.

Preset buttons of sub menu: Receives the selected broadcasting station.

- Operating SiriusXM Radio from the screen
(This function is not made available in some countries or areas)



[Ch]: Touch [-]/[+] to search for the receivable channels. Touch and hold to switch channels. When released, the current channel is received.

[<|]/[|>]: Fast rewind or fast forward the radio cache. Touch and hold to jump to the start or end of the buffer.

[||]: Pause the radio cache.

[▶]: Play the radio cache.

[Related]: Displays content related to the received channel.

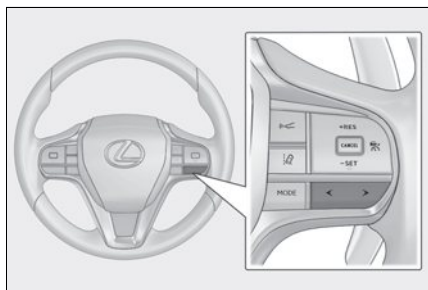
[Notify me]: Select an artist or song, or both an artist and song, to receive a notification when the corresponding broadcast starts. (When receiving a regular channel) Select a sports team to receive a notification when the corresponding broadcast starts. (When receiving a sport channel)

[♥]: Registers the currently received channel in favorites. When registered, touch to cancel.

Preset buttons of sub menu: Receive the registered channels.

- Operating with the steering switches

[<]/[>] switches



- AM/FM

Switch the frequencies or broadcasting stations registered in the preset buttons in order.

Press and hold to switch frequencies. When released, the broadcasting station closest to that position with the best reception sensitivity is selected automatically.

- SiriusXM Radio


Switch the channels registered in the preset buttons in order.

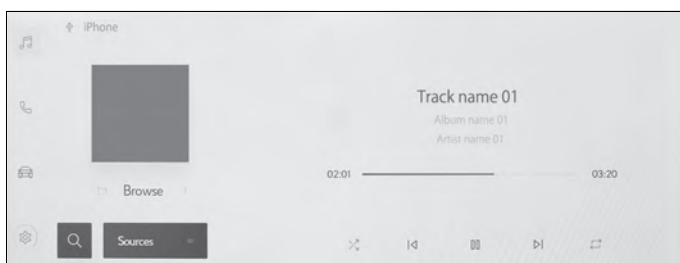
Press and hold to switch channels. When released, the channel closest to that position with the best reception sensitivity is selected automatically.


Playing iPod/iPhone


Play back music files on an iPod or iPhone connected to the USB port. When an iPod or iPhone is connected, a button with the device's name is displayed on the source selection screen. This may not be displayed for some devices.

Connect an iPod or iPhone.


- 1 Touch [] from the main menu.
 - 2 Touch [Sources].
 - 3 Touch the device name or [USB].
 - 4 Operate the iPod or iPhone that is playing as necessary.
- Perform operations from the screen




[]: Performs shuffle playback. Each touch switches the shuffle setting.*

[]: Plays the currently playing track from the beginning. When at the start of the track, the previous track will play from the beginning.

Touch and hold to fast rewind. Release to start playback from that position.

[]: Pauses playback.

[]: Plays.

[]: Switches the tracks. Touch and hold to fast forward. Release to start playback from that position.

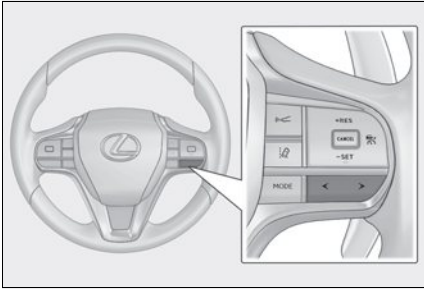
[]: Performs repeat playback. Each touch switches the repeat setting.*

[Browse]: Displays the playback mode in the sub menu. Tracks can be selected from a list sorted by artist, album, song, playlist, genre, Podcast, composer, audiobook, or radio.

[Shuffle play] is displayed when playing a track selected from the list. Touch this to return to the playback screen and perform shuffle playback.

*: The order in which shuffle or repeat settings switch depends on the connected device.

● Operating with the steering switches
[<]/[>] switches



Switch the tracks.

Press and hold to fast forward or fast rewind. Release to start playback from that position.

Lexus Climate Concierge


The seat heaters, seat ventilators and heated steering wheel (if equipped) and neck heaters (if equipped) are each automatically controlled according to the set temperature of the air conditioning system, the outside and cabin temperature, etc. Lexus Climate Concierge allows a comfortable condition to be maintained without adjusting each system.

Displaying the Lexus Climate Concierge

Lexus Climate Concierge can be operated using the air conditioning control panel (→P.81) and air conditioning control screen on the Center Display (→P.82).

Turning on Lexus Climate Concierge

Lexus Climate Concierge operates in conjunction with the automatic mode switch of the air conditioning control panel.

- 1 Select  in the main menu on the Center Display.
- 2 Select "Climate".
- 3 Select "Options".
- 4 Select "Climate concierge".
- 5 Turn the automatic mode switch on.

Automatic Air Conditioning System

The air conditioning system can be operated using the air conditioning control panel and air conditioning control screen on the Center Display (→P.82).

Air conditioning controls



- A** Automatic mode switch
- B** Off switch
- C** Left-hand side temperature control switch
- D** Fan speed control switch
- E** Outside/recirculated air mode switch
- F** Right-hand side temperature control switch
- G** Windshield defogger switch
- H** Rear window and outside rear view mirror defoggers switch

■ Adjusting the temperature

Operate the temperature control switch upwards to increase the temperature and downwards to decrease the temperature.

If the "A/C" indicator is turned off, the system will blow ambient temperature air or heated air.

■ Setting the fan speed

Operate the fan speed control switch upwards to increase the fan speed and downwards to decrease the fan speed.


Press the off switch to turn the fan off.

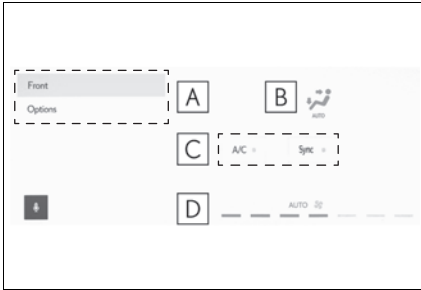
■ Changing the air flow mode

→P.82

Air conditioning control screen

Main control screen

- 1 Select  in the main menu on the Center Display.
- 2 Select "Climate".
- 3 Select "Front".




A Sub menu


Selecting the sub menu item to switch the screen display.

"Front": Display the front air conditioning control screen


"Options": Display the option screen

B Select the air flow mode

 : Air flows to the upper body

 : Air flows to the upper body and feet

 : Air flows to the feet

 : Air flows to the feet and the windshield defogger operates

C Turn the function on/off

When the function is on, the indicator illuminates on the control screen.

"A/C": Set cooling and dehumidification function

"Sync": Adjust the temperature for driver seat and front passenger seat simultaneously ("Sync" mode)

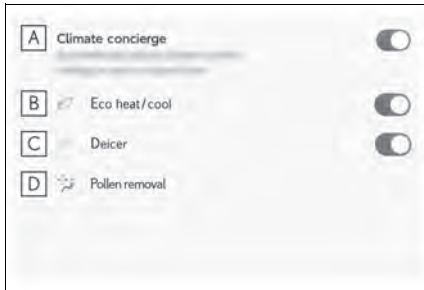
D Fan speed level display

The current fan speed level is displayed.

■ Option control screen

Select "Options" on the air conditioning control screen (→P.82).

The functions can be switched  (on) and  (off).



A Set Lexus Climate Concierge (→P.80)

B Set eco air conditioning mode

Air conditioning and heater output is limited to prioritize fuel economy.

C Prevent ice from building up on the windshield and wiper blades (Windshield wiper de-icer) (if equipped)

D Removing pollen from the air (Micro dust and pollen filter)


Using automatic mode

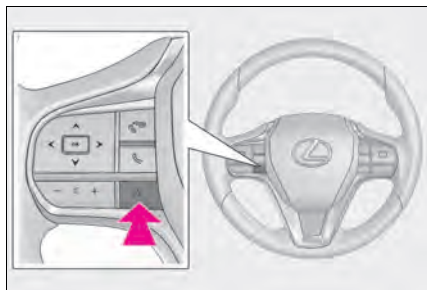
- 1 Press the automatic mode switch.
- 2 Press the outside/recirculated air mode switch to switch to automatic air intake mode.
The air conditioning system automatically switches between outside air and recirculated air modes.
- 3 Adjust the temperature setting.
- 4 To stop the operation, press the off switch.

Starting Voice Control

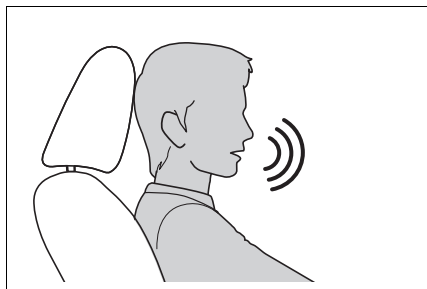
Voice control can be started by any of the following operations:

■ Press the talk switch

- 1 Press the [] switch (talk switch) on the steering.



■ Say the wake word



- 1 Say "Hey Lexus".

- The wake word can be turned on or off.
- The wake word can be used and then immediately issue a voice command.

Example: "Hey Lexus" "Take me to an Italian restaurant."

■ Touch the microphone button



- 1 Touch [] or [] on the screen.

Function list

The following tables list frequently used commands for each function category.

- The functions available may vary according to the system installed.
- Items with subscription will require Intelligent Assistant functionality.

■ Common

Action	Example voice command	Subscription
Shows list of general commands	"Help"	No
Stops the current conversation and re-starts at the beginning	"Start over"	No
Cancels the voice control system	"Cancel"	No

■ Navigation

Intelligent Assistant system enables navigation voice search. This allows you with variety of features such as searching a point of interest (POI), navigate to an address as well as discovering new POIs.

Function	Example voice command	Subscription
Destination search	"Take me to <location category/business name>" "Take me to <an Italian restaurant>" "Take me to <address>" "Take me to <6565 Headquarters drive Plano TX>" "Take me home" "Take me to work"	Yes
Map control	"Map zoom in" "Map zoom out"	Yes
Route information	"Cancel trip"	Yes
Telematics	"Call destination assist"	No

■ Multimedia control

Allows you to engage in a dialog with the Intelligent Assistant to complete various multimedia tasks via voice input.

Function	Example voice command	Subscription
Radio	"Tune to 99.5 FM" "Tune to Rock on FM" "Tune to channel 2 on SiriusXM"	No
Media	"Mute audio" "Next" "Previous"	No
Media Streaming	"Play <artist/album/song/genre/playlist>" "Play <Frank Sinatra>"	Yes

■ Hands-free phone operation

Allows you to engage in a dialog with the Intelligent Assistant to complete various tasks via voice input, such as making a phone call to a contact, or calling Destination Assist.

Function	Example voice command	Subscription
Phone call	"Call <John Smith>" "Dial <555 212 1212>" "Call back" "Redial"	No
Message	"Send message to <John Smith>" "Read message"	No

■ Screen display switching

Allows you to easily change to various function screen by voice.

Function	Example voice command	Subscription
Navigation	"Show map"	Yes
Phone	"Show recent calls"	No
Multimedia	"Show the FM station list"	No
Settings	"Show display settings"	No

■ Vehicle device control

Allows you to easily change a vehicle setting or activate a function by voice.

Function	Example voice command	Subscription
Climate	“Turn on the air conditioner” “Set the temperature to <70> degrees” “Turn the fan speed up”	No

■ Notifications

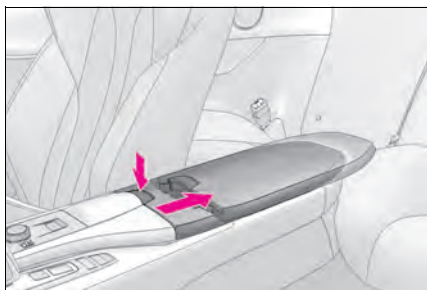
Offers notifications based on user preferences, vehicle geolocation and learned behavior. Each service can be set to On/Off from the Lexus app.

Function	Detail	Subscription
POI suggestion (Navigation)	<ul style="list-style-type: none">• A POI shared through a smartphone app• Parking suggestions near destination	Yes
Low fuel (Navigation)	Automatically notifies user of low fuel level. If applicable, provides POI list nearby (ahead) or along route and allows user to select and navigate by touch.	Yes

Connecting to the USB Port

Connect a device such as smartphone or portable player.

- 1 Slide the armrest as far back while pressing the button.



- 2 Lift the armrest while pulling the knob.



- 3 Connect a device.



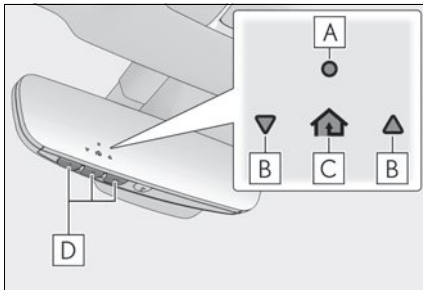
When connecting a USB flash drive, connect it directly to the USB port.

Garage Door Opener

The garage door opener can be programmed using the HomeLink[®] to operate garage doors, gates, entry doors, door locks, home lighting systems, security systems, and other devices.

System components

The HomeLink[®] wireless control system in your vehicle has 3 buttons which can be programmed to operate 3 different devices. Refer to the programming methods on the following pages to determine the method which is appropriate for the device.



- A** HomeLink[®] indicator light
- B** Garage door operation indicators
- C** HomeLink[®] icon

Illuminates while HomeLink[®] is operating.

- D** Buttons

■ Before programming HomeLink[®]

- During programming, it is possible that garage doors, gates, or other devices may operate. For this reason, make sure that people and objects are clear of the garage door or other devices to prevent injury or other potential harm.
- It is recommended that a new battery be placed in the remote control transmitter for more accurate programming.
- Garage door opener motors manufactured after 1995 may be equipped with rolling code protection. If this is the case, you may need a stepladder or other sturdy, safe device to reach the “Learn” or “Smart” button on the garage door opener motor.

■ HomeLink® programming procedure

The programming procedures can also be found at the following URL.

Website: www.homelink.com/lexus



The word “QR Code” is registered trademark of DENSO WAVE INCORPORATED in Japan and other countries.

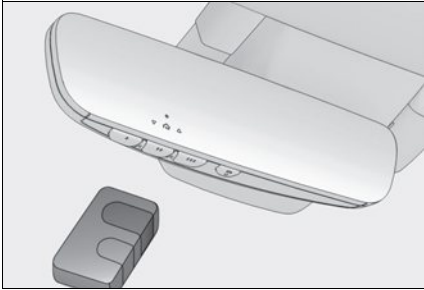
For support, contact customer support at the following.

Help Line: 1-800-355-3515

■ Programming HomeLink®

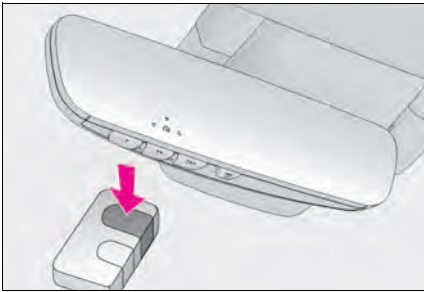
Steps **1** through **3** must be performed within 60 seconds, otherwise the indicator light will stop flashing and programming will not be able to be completed.

- 1** Press and release the HomeLink® button you want to program and check that the HomeLink® indicator light flashes (orange).



- 2** Point the remote control transmitter for the device at the rear view mirror, 1 to 3 in. (25 to 75 mm) from the HomeLink® buttons.

Keep the HomeLink® indicator light in view while programming.



- 3** Program a device.

► Programming a device other than an entry gate (for U.S.A. owners)

Press and hold the remote control transmitter button until the HomeLink® indicator light changes from slowly flashing orange to rapidly flashing green (rolling code) or continuously lit green (fixed code), then release the button.

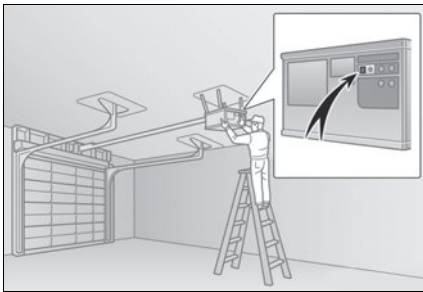
► Programming an entry gate (for U.S.A. owners)/Programming a device in the Canadian market

Press and release the remote control transmitter button at 2 second intervals, repeatedly, until the HomeLink® indicator light changes from slowly flashing (orange) to rapidly flashing (green) (rolling code) or continuously lit (green) (fixed code).

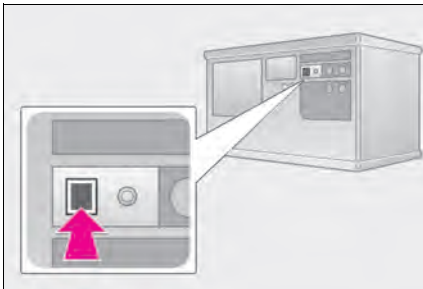
- 4** Test the HomeLink[®] operation by pressing the newly programmed button and observing the indicator light:
- Indicator light illuminates: Programming of a fixed code device has completed. The garage door or other device should operate when a HomeLink[®] button is pressed and released.
 - Indicator light flashes rapidly: The garage door opener motor or other device is equipped with a rolling code. To complete programming, firmly press and hold the HomeLink[®] button for 2 seconds then release it.
 - If the garage door or other device does not operate, proceed to “Programming a rolling code system”.
- 5** Repeat the steps above to program another device for any of the remaining HomeLink[®] buttons.

■ Programming a rolling code system

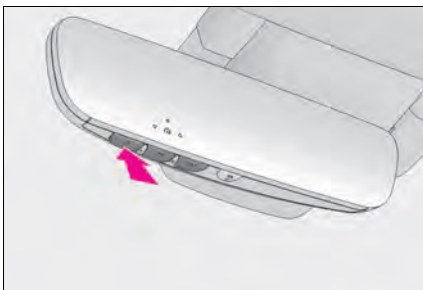
2 or more people may be necessary to complete rolling code programming.



- 1** Locate the “Learn” or “Smart” button on the garage door opener motor in the garage. This button can usually be found where the hanging antenna wire is attached to the unit. The name and color of the button may vary by manufacturer. Refer to the owner’s manual supplied with the garage door opener motor for details.



- 2** Press and release the “Learn” or “Smart” button. Perform **3** within 30 seconds after performing **2**.



- 3** Press and hold the desired HomeLink[®] button (inside the vehicle) for 2 seconds and release it. Repeat this sequence (press/hold/release) up to 3 times to complete programming. If the garage door opener motor operates when the HomeLink[®] button is pressed, the garage door opener motor recognizes the HomeLink[®] signal.

■ Enabling 2-way communication with a garage door (only available for compatible devices)

When enabled, 2-way communication allows you to check the status of the opening and closing of a garage door through indicators in your vehicle.

2-way communication is only available if the garage door opener motor used is a compatible device. (To check device compatibility, refer to www.homelink.com.)

- 1 Within 5 seconds after programming the garage door opener has been completed, if the garage door opener motor is trained to HomeLink[®], both garage door operation indicators will flash rapidly (green) and the light on the garage door opener motor will blink twice, indicating that 2-way communication is enabled.

If the indicators do not flash, perform **2** and **3** within the first 10 presses of the HomeLink[®] button after programming has been completed.

- 2 Press a programmed HomeLink[®] button to operate a garage door.
- 3 Within 1 minute of pressing the HomeLink[®] button, after the garage door operation has stopped, press the “Learn” or “Smart” button on the garage door opener motor. Within 5 seconds of the establishment of 2-way communication with the garage door opener, both garage door operation indicators in the vehicle will flash rapidly (green) and the light on the garage door opener motor will blink twice, indicating that 2-way communication is enabled.

■ Reprogramming a single HomeLink[®] button

When the following procedure is performed, buttons which already have devices registered to them can be overwritten:

- 1 With one hand, press and hold the desired HomeLink[®] button.
- 2 When the HomeLink[®] indicator starts flashing (orange), continue to hold the HomeLink[®] button and perform “Programming HomeLink[®]” **1** (it takes 20 seconds for the HomeLink[®] indicator to start flashing).

Operating HomeLink[®]

Press the appropriate HomeLink[®] button. The HomeLink[®] indicator light should turn on.

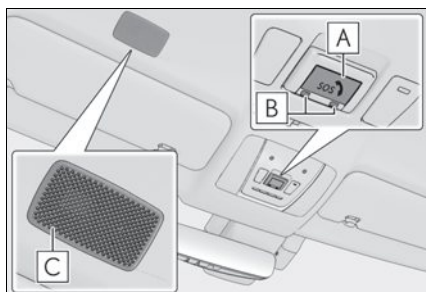
Safety Connect

Safety Connect is a subscription-based telematics service that uses Global Positioning System (GPS) data and embedded cellular technology to provide safety and security features to subscribers. Safety Connect is supported by Lexus' designated response center, which operates 24 hours per day, 7 days per week.

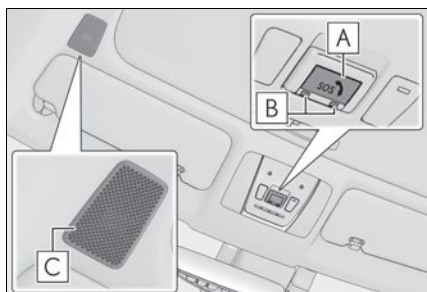
Safety Connect service is available by subscription on select, telematics hardware-equipped vehicles.

System components

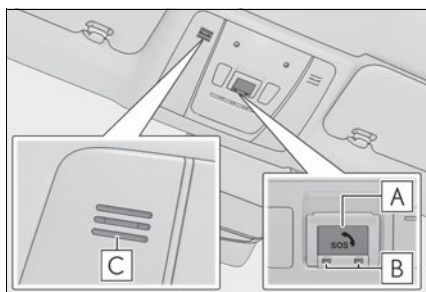
► Except Convertible (vehicles without sunshade)



► Except Convertible (vehicles with sunshade)



► Convertible



A "SOS" button

B LED light indicators

C Microphone

Services

Subscribers have the following Safety Connect services available:

- Automatic Collision Notification

In case of either airbag deployment or severe rear-end collision, the system is designed to automatically call the response center. The responding agent receives the vehicle's location and attempts to speak with the vehicle occupants to assess the level of emergency. If the occupants are unable to communicate, the agent automatically treats the call as an emergency, contacts the nearest emergency services provider to describe the situation, and requests that assistance be sent to the location.

- Stolen Vehicle Location

If your vehicle is stolen, Safety Connect can work with local authorities to assist them in locating and recovering the vehicle. After filing a police report, call the Safety Connect response center at 1-800-25-LEXUS (1-800-255-3987) in the United States, 1-877-539-8777 in Puerto Rico or 1-800-265-3987 in Canada, and follow the prompts for Safety Connect to initiate this service.

In addition to assisting law enforcement with recovery of a stolen vehicle, Safety-Connect-equipped vehicle location data may, under certain circumstances, be shared with third parties to locate your vehicle. Further information is available at Lexus.com.

- Emergency Assistance Button ("SOS")

In the event of an emergency on the road, push the "SOS" button to reach the Safety Connect response center. The answering agent will determine your vehicle's location, assess the emergency, and dispatch the necessary assistance required.

If you accidentally press the "SOS" button, tell the response-center agent that you are not experiencing an emergency.

- Enhanced Roadside Assistance

Enhanced Roadside Assistance adds GPS data to the already included warranty-based Lexus roadside service.

Subscribers can press the "SOS" button to reach a Safety Connect response-center agent, who can help with a wide range of needs, such as: towing, flat tire, fuel delivery, etc. For a description of the Roadside Assistance services and their limitations, please see the Safety Connect Terms and Conditions, which are available at Lexus.com.

Subscription

After you have signed the Telematics Subscription Service Agreement and are enrolled, you can begin receiving services.

A variety of subscription terms is available for purchase. Contact your Lexus dealer, call the following or push the "SOS" button in your vehicle for further subscription details.

- The United States

1-800-25-LEXUS (1-800-255-3987)

- Canada

1-800-26-LEXUS (1-800-265-3987)

- Puerto Rico

1-877-539-8777

Remote Connect (if equipped)

The functionality of Remote Connect and Service Connect are made possible by the use of a DCM and a smartphone.

For details about these services, refer to <https://www.lexus.com> (U.S.A.), <https://www.lexus.ca> (Canada) or <https://www.lexus.mx> (Mexico).

Remote Connect subscription

Remote Connect is a smartphone application that lets you view and remotely control certain aspects of your vehicle.

Service Connect (if equipped)

Service Connect uses DCM to collect and transmit vehicle data that allows Lexus to provide:

- Vehicle Health Report (VHR) (Safety Recalls, Service Campaigns, Current Vehicle Alerts, Required Maintenance, and Vehicle Condition Status)
- Maintenance Notifications
- Vehicle Alert Notifications

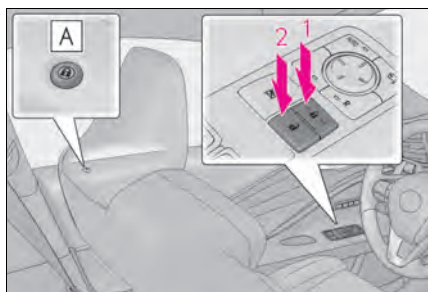
Door Locks

The vehicle can be locked and unlocked using the entry function, wireless remote control or door lock switches.

For details about the entry function or wireless remote control, refer to P.18, 19.

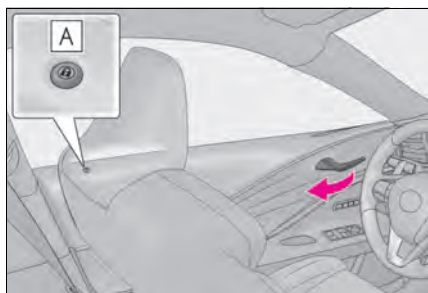
Unlocking and locking the doors from the inside

■ Door lock switches



- 1** Locks both side doors
The indicator **A** comes on.
- 2** Unlocks both side doors
The indicator **A** turns off.

■ Inside door handles



Pull the inside door handle to unlock the door.

The door lock indicator **A** turns off.

The doors can be opened by pulling the inside door handle even if the door lock indicator **A** illuminates.

What to do if...

List of Warning/Indicator Lights

Immediately stop the vehicle in a safe place and contact your Lexus dealer. Continuing to drive the vehicle may be dangerous.

BRAKE

(U.S.A.)

Brake system warning light



(Canada)

(Red)

Immediately stop the vehicle in a safe place and contact your Lexus dealer.



Charging system warning light



Low engine oil pressure warning light

Have the vehicle inspected by your Lexus dealer immediately.



(U.S.A.)

Malfunction indicator lamp



(Canada)



SRS warning light



(U.S.A.)

ABS warning light



(Canada)



(Red or yellow)

Electric power steering system warning light



(Flashes or illuminates)

PCS warning light



Slip indicator



Brake Override System warning light/Drive-Start Control warning light



(Flashes)

Brake hold operated indicator



(Flashes)

(U.S.A.)

Parking brake indicator



(Flashes)

(Canada)



(Yellow)

Brake system warning light



(Blinking and then continuously on)

Tire pressure warning light

For further information, refer to the "OWNER'S MANUAL".

What to do if...

Follow the correction procedures.



Low fuel level warning light



Master warning light



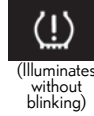
Driver's and front passenger's seat belt reminder light



LTA indicator



Rear passengers' seat belt reminder lights



Tire pressure warning light*

Stop and check.



High coolant temperature warning light



Hybrid system overheat warning light
(if equipped)

For further information, refer to the "OWNER'S MANUAL".

What to do if...

See the "OWNER'S MANUAL"



Turn signal indicator



Headlight indicator (U.S.A.)



Tail light indicator (Canada)



Headlight high beam indicator



AHB indicator



Cruise control indicator



Dynamic radar cruise control indicator



Cruise control "SET" indicator



(White or green)

LTA indicator



(Flashes in orange)

LTA indicator



Intuitive parking assist indicator (if equipped)



(Flashes)

Slip indicator



VSC OFF indicator



PCS warning light



BSM (Blind Spot Monitor) outside rear view mirror indicators



BSM (Blind Spot Monitor) indicator



RCTA (Rear Cross Traffic Alert) indicator



Brake hold standby indicator



Brake hold operated indicator



Security indicator



Smart access system with push-button start indicator



"READY" indicator (if equipped)



Low outside temperature indicator



Eco Driving Indicator Light (if equipped)



EV indicator (if equipped)



(U.S.A.)

Parking brake indicator



(Canada)

For further information, refer to the "OWNER'S MANUAL".

What to do if...

See the “OWNER’S MANUAL”



“AIR BAG ON/OFF” indicator



“AIR BAG ON/OFF” indicator

● Drive mode indicators



Snow mode indicator



EV drive mode indicator (if equipped)



“Normal” indicator



“Comfort” indicator



“Eco” indicator



“Custom” indicator



“Sport S” indicator



“EXPERT” indicator



“Sport S+” indicator

For further information, refer to the “OWNER’S MANUAL”.

- *: The tire pressure warning light may come on due to natural causes such as natural air leaks and tire inflation pressure changes caused by temperature. In this case, adjusting the tire inflation pressure will turn off the warning light (after a few minutes). In case the light does not turn off even if the tire inflation pressure is adjusted, have the system checked by your Lexus dealer.

What to do if...

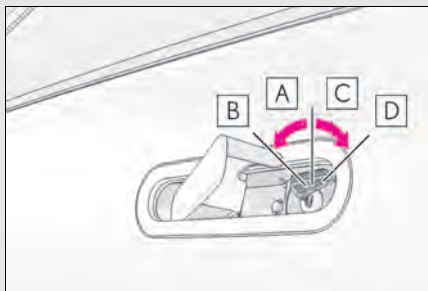
If the electronic key does not operate properly

Locking and unlocking the door

- 1 Push in the depression on the front edge of the driver's door handle.



- 2 Insert the mechanical key while pulling on the driver's door handle.



- 3 Turn the key in order to perform the following operations.

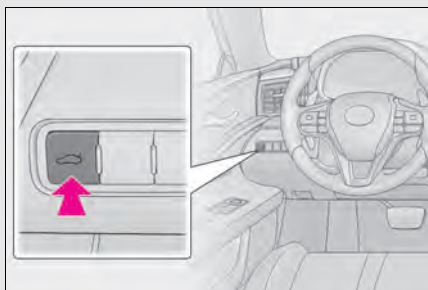
- A** Locks both side doors
- B** Closes the windows (turn and hold)*
- C** Unlocks the door

Turning the key rearward unlocks the driver's door. Turning the key once again within 5 seconds unlocks the other door.

- D** Opens the windows (turn and hold)*

*: These settings must be customized at your Lexus dealer.

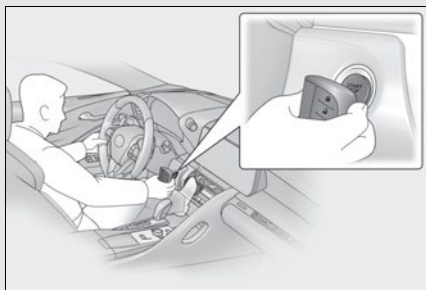
Opening the trunk



Unlock the doors, and press the trunk opener switch.

What to do if...

Starting the engine <hybrid system>



- 1** Depress the brake pedal.
- 2** Touch the Lexus emblem side of the electronic key to the engine switch <power switch>.

When the electronic key is detected, a buzzer sounds and the engine switch <power switch> will turn to ON.

When the smart access system with push-button start is deactivated in customization setting, the engine switch <power switch> will turn to ACC.

- 3** Firmly depress the brake pedal and check that a message is shown on the multi-information display.
- 4** Press the engine switch <power switch>.

In the event that the engine <hybrid system> still cannot be started, contact your Lexus dealer.

If the electronic key battery becomes depleted, a warning message will be shown on the multi-information display. Replace the battery with a new one. For instructions on replacing the battery, refer to the "OWNER'S MANUAL".

If you need further assistance, contact your Lexus dealer.

What to do if...

If the engine <hybrid system> doesn't start

Make sure that the correct operating procedures have been followed.

Brake pedal

Make sure that the brake pedal is firmly depressed when attempting to start the engine <hybrid system>. (→P.24)

If the engine <hybrid system> still does not start, see the "OWNER'S MANUAL" for more information or contact your Lexus dealer.

Memo

A large white rectangular area with horizontal lines, serving as a memo template. The lines are evenly spaced and extend across the width of the page, providing a guide for writing.

Memo

A large white rectangular area with horizontal lines, serving as a memo template. The lines are evenly spaced and extend across the width of the page, providing a guide for writing.



Your Lexus dealer

Your Lexus dealer will provide quality maintenance and any other assistance you may require.

If there is not a Lexus dealer near you, please call the following number:

■ U.S. OWNERS

- In the U.S. mainland or Canada:

Lexus Roadside Assistance

1-800-25-LEXUS or 1-800-255-3987 (Toll-Free)

- In Hawaii:

Servco Automotive Roadside Assistance/Customer Services

1-800-25-LEXUS or 1-800-255-3987 (Toll-Free)

■ CANADIAN OWNERS

- In Canada or the U.S. mainland:

Lexus Roadside Assistance/Customer Service

1-800-26-LEXUS or 1-800-265-3987 (Toll-Free)

Please access our **websites** for further information.

- The U.S. mainland: **www.lexus.com**
- Hawaii: **www.servcolexus.com**
- Canada: **www.lexus.ca**

©2023 TOYOTA MOTOR CORPORATION

All rights reserved. This material may not be reproduced or copied, in whole or in part, without the written permission of Toyota Motor Corporation.



Owner's Manual Quick Guide:

Publication No. OM11670U

Part No. 01999-11670

Printed in Japan 01-2305-00 ☐

LC 500 / LC 500h Owner's Manual Quick Guide (北美U)