



FIT

owners.honda.com (U.S.)
myhonda.ca (Canada)

A0G01406
 31T5AG00
 00X31-T5A-G000

2016 Honda Fit Owner's Guide
 ©2015 Honda Motor Co., Ltd. — All Rights Reserved Printed in U.S.A.



2016
OWNER'S GUIDE

DISCLOSURES

■ Devices That Emit Radio Waves

The following products and systems on your vehicle emit radio waves when in operation:

- Audio system
- Bluetooth® Audio
- Bluetooth® HandsFreeLink®
- Immobilizer system
- Remote transmitter
- Smart Entry System

Each of the above complies with the appropriate requirements or the required standards of the FCC (Federal Communications Commission) and Industry Canada, described below:

As required by the FCC:

This device complies with Part 15 of the FCC rules. Operation is subject to the following two conditions: (1) This device may not cause harmful interference, and (2) this device must accept any interference received, including interference that may cause undesired operation.

Changes or modifications not expressly approved by the party responsible for compliance could void the user's authority to operate the equipment.

As required by Industry Canada:

This device complies with Industry Canada Standard RSS-Gen/210/251/310. Operation is subject to the following two conditions: (1) this device may not cause interference, and (2) this device must accept any interference, including interference that may cause undesired operation of the device.

■ California Perchlorate Contamination Prevention Act

The airbags, seat belt tensioners, and CR-type batteries in this vehicle may contain perchlorate materials—special handling may apply. See www.dtsc.ca.gov/hazardouswaste/perchlorate/ for more information.

■ California Proposition 65 Warning

WARNING: This product contains or emits chemicals known to the state of California to cause cancer and birth defects or other reproductive harm.

■ Event Data Recorders

This vehicle is equipped with an event data recorder (EDR). The main purpose of an EDR is to record, in certain crash or near crash-like situations, such as an air bag deployment or hitting a road obstacle, data that will assist in understanding how a vehicle's systems performed. **The EDR is designed to record data related to vehicle dynamics and safety systems for a short period of time, typically 30 seconds or less. The EDR in this vehicle is designed to record such data as:**

- **How various systems in your vehicle were operating;**
- **Whether or not the driver and passenger safety belts were buckled/fastened;**
- **How far (if at all) the driver was depressing the accelerator and/or brake pedal; and,**
- **How fast the vehicle was traveling.**

These data can help provide a better understanding of the circumstances in which crashes and injuries occur. NOTE: EDR data are recorded by your vehicle only if a non-trivial crash situation occurs; no data are recorded by the EDR under normal driving conditions and no personal data (e.g., name, gender, age, and crash location) are recorded. However, other parties, such as law enforcement, could combine the EDR data with the type of personally identifying data routinely acquired during a crash investigation.

To read data recorded by an EDR, special equipment is required, and access to the vehicle or the EDR is needed. In addition to the vehicle manufacturer, other parties such as law enforcement that have the special equipment can read the information if they have access to the vehicle or the EDR.

The data belong to the vehicle owner and may not be accessed by anyone else except as legally required or with the permission of the vehicle owner.

■ Service Diagnostic Recorders

This vehicle is equipped with service-related devices that record information about powertrain performance. The data can be used to verify emissions law requirements and/or help technicians diagnose and solve service problems. It may also be combined with data from other sources for research purposes, but it remains confidential.

INTRODUCTION

This Owner's Guide is intended to help you quickly get acquainted with your **2016 Honda Fit**. It provides basic information and instructions on technology and convenience features, as well as emergency procedures and how to get assistance.

This guide is for vehicles sold in the United States and Canada. It covers all Fit models, so you may find descriptions of features and equipment that are not in your vehicle. Images throughout this guide are from U.S. vehicles and represent features and equipment that are available on some, but not all, models.

This guide is not intended to be a substitute for the Owner's Manual. The Owner Information CD enclosed in your glove box kit includes the Owner's Manual, Navigation Manual, and vehicle and tire warranties in electronic format. This information can be viewed on a computer (PC or Mac platform) and saved or printed for your reference. You can also visit owners.honda.com (U.S.) or myhonda.ca (Canada) to view the complete and most current information.

If you are the first registered owner of your vehicle, you may request a complimentary printed copy of the Owner's Manual, Navigation Manual, or Vehicle Warranty within the first six months of vehicle purchase. To request a copy, visit owners.honda.com (U.S.) and create or log in to your account. In Canada, please request a copy from your Honda dealer.

American Honda Motor Company strives to be proactive in protecting our environment and natural resources. By using electronic delivery for a considerable portion of the information typically found in a vehicle owner's manual, we are further reducing our impact on the environment.

Honda Automobile Customer Service

Your authorized Honda dealer should be able to answer any questions you have about your vehicle. However, if you are dissatisfied with the information you receive, you can call Honda Automobile Customer Service (see page 133).

Call (800) 999-1009 (U.S.) or (888) 946-6329 (Canada)

Honda Roadside Assistance

24-hour emergency road service is available to you in the United States and Canada throughout your 3-year/36,000-mile warranty term. Services include jump starting, flat tire and lockout assistance, towing, and more (limitations apply).

Call (866) 864-5211 (U.S.) or (800) 465-7587 (Canada)

TABLE OF CONTENTS

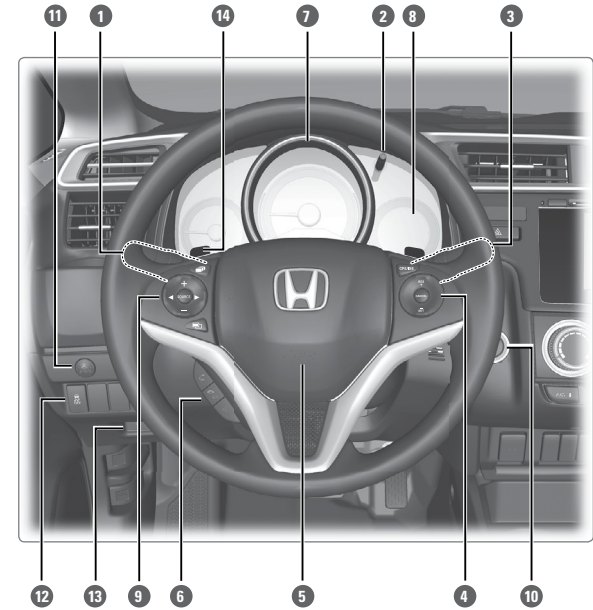
VISUAL INDEX	1	Customized Features	46
Steering Wheel and Nearby Controls...	1	AUDIO AND CONNECTIVITY	47
Dashboard and Other Controls	2	Basic Audio Operation.....	47
SAFETY INFORMATION.....	3	<i>Models with color audio system</i>	
Important Safety Information	3	Color Audio System*	50
Seat Belts	5	FM/AM Radio	51
Airbags.....	9	Compact Disc (CD).....	52
Child Safety	15	iPod®.....	53
Safety Label Locations.....	22	USB Flash Drive	54
Reporting Safety Defects.....	23	<i>Bluetooth® Audio.....</i>	55
INSTRUMENT PANEL.....	24	<i>Models with touchscreen</i>	
Malfunction Indicators	24	Touchscreen Operation*	56
Condition Indicators	26	HondaLink™	57
On/Off Indicators	27	FM/AM Radio	58
Information Display	28	SiriusXM® Radio*	59
VEHICLE CONTROLS	29	Compact Disc (CD)	60
Using the Key or Remote Transmitter...29		iPod®.....	61
Smart Entry System*	30	USB Flash Drive	62
Door Operation	31	<i>Bluetooth® Audio.....</i>	63
Tailgate Operation	32	Pandora®	64
Power Window Operation	33	HDMI Video.....	65
Power Moonroof Operation*	34	<i>BLUETOOTH® HANDSFREELINK® (HFL) ..66</i>	
Interior and Exterior Lights	35	<i>Models with color audio system</i>	
One-Touch Turn Signal.....	36	Basic HFL Operation.....	66
Wiper Operation.....	37	Pairing a Phone.....	67
Adjusting the Seats	38	Making a Call	68
Rear Seats	41	<i>Models with touchscreen</i>	
Adjusting the Mirrors.....	42	Basic HFL Operation.....	69
Adjusting the Steering Wheel	43	Pairing a Phone.....	71
Air Conditioning System*	43	Making a Call	72
Climate Control System*	44	HondaLink™ Assist.....	73
Seat Heaters*	44	SMS Text Messaging and E-Mail* ...74	
Setting the Clock.....	45	Siri™ Eyes Free	75

**if equipped*

VISUAL INDEX

Quickly locate items in the vehicle's interior.

Steering Wheel and Nearby Controls



- 1 Lights/turn signals/LaneWatch button* p. 35, p. 36, p. 94
- 2 SEL/RESET knob* p. 28
Brightness control p. 35
- 3 Wipers/washers p. 37
- 4 Cruise control buttons* p. 93
- 5 Horn
- 6 Bluetooth® HandsFreeLink®/voice recognition buttons p. 66, p. 69, p. 77
- 7 Instrument panel p. 24
- 8 Information display p. 28
- 9 Audio controls p. 48
MENU button* p. 48
Display button* p. 56
- 10 ENGINE START/STOP button* p. 88
- 11 ECON button* p. 92
- 12 Vehicle Stability Assist (VSA®) OFF button p. 92
- 13 Tire Pressure Monitoring System (TPMS) button* p. 102
- 14 Paddle shifters* p. 89

NAVIGATION*76

Basic Navigation Operation76

Entering a Destination79

Routing81

DRIVING83

Before Driving83

Maximum Load Limit.....85

Starting to Drive87

Shifting.....88

Braking90

Vehicle Stability Assist (VSA®), aka Electronic Stability Control (ESC) System.....92

ECON Button*92

Cruise Control93

LaneWatch™*94

Multi-View Rear Camera*95

Refueling97

HANDLING THE UNEXPECTED98

Smart Entry Remote Battery Strength* ...98

Jump Starting98

Shift Lever Does Not Move*99

Overheating.....100

Emergency Engine Stop*101

Emergency Towing101

Tire Pressure Monitoring System (TPMS)102

Changing a Flat Tire.....104

Fuse Locations.....108

MAINTENANCE112

Safety Precautions112

Maintenance Minder™113

Under the Hood.....115

Engine Oil116

Engine Coolant118

Brake Fluid.....119

Window Washer Fluid119

Checking the Battery.....120

Changing Wiper Blades.....121

Tire Information.....123

Tire Labeling126

DOT Tire Quality Grading.....127

Testing of Readiness Codes.....129

SPECIFICATIONS130

CUSTOMER INFORMATION.....132

Frequently Asked Questions/ Troubleshooting132

Contact Us133

Honda Roadside Assistance.....134

Warranty Coverages.....134

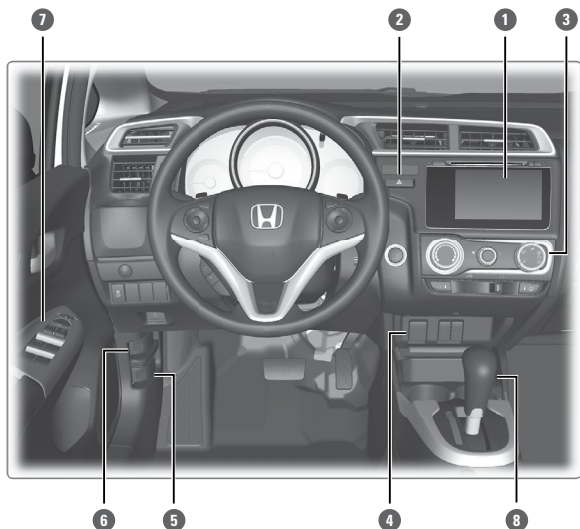
VOICE COMMAND INDEX.....135

INDEX141

*if equipped

*if equipped

Dashboard and Other Controls



- | | |
|--------------------------------|-------------------------------|
| 1 Touchscreen* p. 56 | 6 Fuel fill door handle p. 97 |
| 2 Hazard warning button | 7 Power window switches p. 33 |
| 3 Climate control system p. 44 | Door lock switches p. 31 |
| 4 USB/HDMI* port p. 47 | Door mirror controls p. 42 |
| Auxiliary input jack* p. 48 | 8 Shift lever* p. 88 |
| Accessory power socket p. 47 | Manual transmission* p. 90 |
| 5 Hood release handle p. 115 | |

*if equipped

SAFETY INFORMATION

Your safety—and the safety of others—is very important, and operating this vehicle safely is an important responsibility. While we strive to help you make informed decisions about safety, it is not practical or possible to warn you about all the hazards associated with operating or maintaining your vehicle. Therefore, you must use your own good judgment.

Important Safety Information

This guide explains many of your vehicle's safety features and how to use them. Please read this information carefully. Following the instructions below will also help to keep you and your passengers safe.

■ Important Safety Precautions

- Always wear your seat belt.
- Secure all children in the proper restraint system.
- Be aware of airbag hazards.
- Don't drink and drive.
- Pay appropriate attention to the task of driving safely.
- Control your speed.
- Keep your vehicle in safe condition.

Engaging in cell phone conversation or other activities that keep you from paying close attention to the road, other vehicles, and pedestrians could lead to a crash. Remember, situations can change quickly, and only you can decide when it is safe to divert some attention away from driving.

■ Safety Messages

When you see the following messages throughout this guide, pay close attention.

⚠ DANGER You WILL be KILLED or SERIOUSLY HURT if you don't follow instructions.

⚠ WARNING You CAN be KILLED or SERIOUSLY HURT if you don't follow instructions.

⚠ CAUTION You CAN be HURT if you don't follow instructions.

NOTICE This information is intended to help you avoid damage to your vehicle, other property, or the environment.

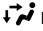
■ Carbon Monoxide Gas

The engine exhaust from this vehicle contains carbon monoxide, a colorless, odorless, and highly toxic gas. As long as you properly maintain your vehicle and follow the instructions set forth below, you will not accumulate dangerous levels of carbon monoxide gas in the vehicle interior.

Have the exhaust system inspected for leaks whenever:

- The exhaust system is making an unusual noise.
- The exhaust system may have been damaged.
- The vehicle is raised for an oil change.

When you operate a vehicle with the tailgate open, airflow can pull exhaust gas into the interior and create a hazardous condition. If you must drive with the tailgate open, open all the windows and set the climate control system as shown below.

1. Select the fresh air mode.
2. Select the  mode.
3. Set the fan speed to high.
4. Set the temperature control to a comfortable setting.

Adjust the climate control system in the same manner if you sit in your parked vehicle with the engine running.

WARNING

Carbon monoxide gas is toxic. Breathing it can cause unconsciousness and even kill you.

Avoid any enclosed areas or activities that expose you to carbon monoxide.

An enclosed area such as a garage can quickly fill up with carbon monoxide gas. Do not run the engine with the garage door closed. Even when the garage door is open, drive out of the garage immediately after starting the engine.

Seat Belts

A seat belt is your best protection in all types of collisions. Airbags are designed to supplement seat belts, not replace them. So even though your vehicle is equipped with airbags, make sure you and your passengers always wear your seat belts and wear them properly.

■ Lap/Shoulder Seat Belts

All five seating positions are equipped with lap/shoulder seat belts with emergency locking retractors. In normal driving, the retractor lets you move freely while keeping some tension on the belt. During a collision or sudden stop, the retractor locks to restrain your body. The rear seat belts also have a lockable retractor for use with child seats.

The front seats are equipped with automatic seat belt tensioners to enhance safety. The tensioners automatically tighten the front seat belts during a moderate to severe frontal collision, sometimes even if the collision is not severe enough to inflate the front airbags.

■ Proper Use of Seat Belts

Follow these guidelines for proper use:

- All occupants should sit upright, well back in the seat, and remain in that position for the duration of the trip. Slouching and leaning reduces the effectiveness of the belt and can increase the chance of serious injury in a crash.
- Never place the shoulder part of a lap/shoulder seat belt under your arm or behind your back. This could cause very serious injuries in a crash.
- Two people should never use the same seat belt. If they do, they could be very seriously injured in a crash.
- Do not put any accessories on the seat belts. Devices intended to improve comfort or reposition the shoulder part of a seat belt can reduce the protective capability and increase the chance of serious injury in a crash.
- No one should sit in a seat with an inoperative seat belt or one that does not appear to be working correctly. Using a seat belt that is not working properly may not protect the occupant in a crash. Have a dealer check the belt as soon as possible.

WARNING

Not wearing a seat belt properly increases the chance of a serious injury or death in a crash, even though your vehicle has airbags.

Be sure you and your passengers always wear seat belts and wear them properly.

■ Seat Belt Inspection

Regularly check the condition of your seat belts as follows:

- Pull each belt out fully, and look for frays, cuts, burns, and wear.
- Check that the latches work smoothly and the belts retract easily. If a belt does not retract easily, cleaning the belt may correct the problem. Use only mild soap and warm water. Do not use bleach or cleaning solvents. Make sure the belt is completely dry before allowing it to retract.

Any belt that is not in good condition or working properly will not provide proper protection and should be replaced as soon as possible.

A belt that has been worn during a crash may not provide the same level of protection in a subsequent crash. Have your seat belts inspected by a dealer after any collision.

⚠ WARNING

Not checking or maintaining seat belts can result in serious injury or death if the seat belts do not work properly when needed.

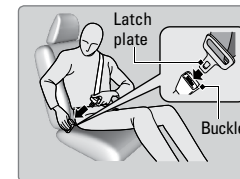
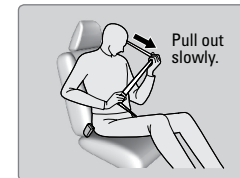
Check your seat belts regularly and have any problem corrected as soon as possible.

■ Fastening a Seat Belt

Adjust your seat to the proper position (see page 38), and then follow the below steps.

1. Pull the seat belt out slowly.
2. Insert the latch plate into the buckle, then tug on the belt to make sure the buckle is secure. Make sure that the belt is not twisted or caught on anything.
3. Position the lap part of the belt as low as possible across your hips, then pull up on the shoulder part of the belt so the lap part fits snugly. This lets your strong pelvic bones take the force of a crash and reduces the chance of internal injuries.
4. If necessary, pull up on the belt again to remove any slack, then make sure that the belt rests across the center of your chest and over your shoulder. This spreads the forces of a crash over the strongest bones in your upper body.

To release the belt, push the red PRESS button then guide the belt by hand until it has retracted completely.



⚠ WARNING

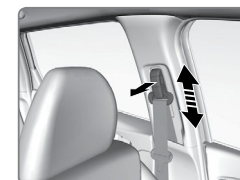
Improperly positioning the seat belts can cause serious injury or death in a crash.

Make sure all seat belts are properly positioned before driving.

■ Adjusting the Shoulder Anchor

The front seats have adjustable shoulder anchors to accommodate taller and shorter occupants.

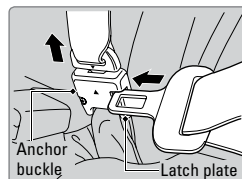
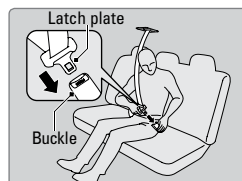
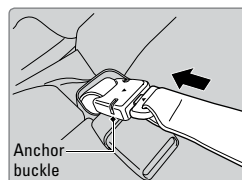
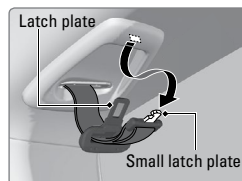
1. Move the anchor up and down while pulling the release outward.
2. Position the anchor so that the belt rests across the center of your chest and over your shoulder.



■ Seat Belt with Detachable Anchor

The seat belt for the rear center seat is located in the ceiling.

1. Pull out the seat belt's small latch plate and the latch plate from each holding slot in the ceiling.
2. Line up the triangle marks on the small latch plate and anchor buckle. Make sure the seat belt is not twisted. Attach the belt to the anchor buckle.
3. Insert the latch plate into the buckle. Properly fasten the seat belt the same way you fasten the lap/shoulder seat belt.



To unlatch the detachable anchor, insert the latch plate into the slot on the side of the anchor buckle.

⚠️ WARNING

Using the seat belt with the detachable anchor unlatched increases the chance of serious injury or death in a crash.

Before using the seat belt, make sure the detachable anchor is correctly latched.

Airbags

Your vehicle is equipped with three types of airbags: front airbags, side airbags, and side curtain airbags.

■ Front Airbags (SRS)

The front SRS airbags inflate in a moderate-to-severe frontal collision to help protect the head and chest of the driver and/or front passenger. They are housed in the center of the steering wheel for the driver, and in the dashboard for the front passenger. Both airbags are marked **SRS AIRBAG**.

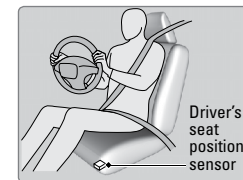
SRS (Supplemental Restraint System) indicates that the airbags are designed to supplement seat belts, not replace them. Seat belts are the occupant's primary restraint system.

■ Advanced Airbags

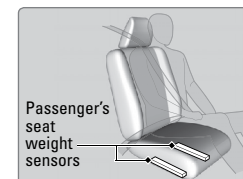
Your front airbags have advanced features to help reduce the likelihood of airbag-related injuries to smaller occupants.

The driver's advanced front airbag system includes a seat position sensor. If the seat is too far forward, the airbag inflates with less force, regardless of the severity of the impact.

If there is a problem with the driver's seat position sensor, the SRS indicator will come on and the airbag will inflate with full (normal) force, regardless of the driver's seating position.



The passenger's advanced front airbag system has weight sensors. Although Honda recommends against carrying an infant or small child in front, if the sensors detect the weight of a child (up to 65 lbs or 29 kg), the system will automatically turn off the passenger's front airbag.



For both advanced front airbags to work properly:

- Do not spill any liquid on or under the seats.
- Do not put any object under the passenger's seat.
- Make sure any objects are positioned properly on the floor. Improperly positioned objects can interfere with the advanced airbag sensors.
- All occupants should sit upright and wear their seat belts properly.
- Do not place any cover over any part of the passenger side dashboard.

■ Side Airbags

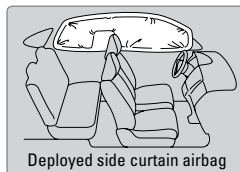
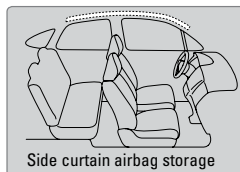
The side airbags help protect the upper torso and pelvis of the driver or a front passenger during a moderate-to-severe side impact. They are housed in the outside edge of the driver's and front passenger's seat-backs. Both are marked **SIDE AIRBAG**.

■ Side Curtain Airbags

Side curtain airbags help protect the heads of the driver and passengers in outer seating positions during a moderate-to-severe side impact. The side curtain airbags equipped in this vehicle are also designed to help reduce the likelihood of partial and complete ejection of vehicle occupants through side windows in crashes, particularly rollover crashes.

The side curtain airbags are located in the ceiling above the side windows on both sides of the vehicle.

The side curtain airbags are designed to deploy in a rollover or moderate-to-severe side impact. If the SRS control unit senses that your vehicle is about to roll over, it immediately deploys both side curtain airbags and activates both front seat belt tensioners. If the impact is on the passenger's side, the passenger's side curtain airbag will inflate even if there are no occupants on that side of the vehicle.



To get the best protection from the side curtain airbags, occupants should wear their seat belts properly and sit upright and well back in their seats.

Do not attach any objects to the side windows or roof pillars, as they can interfere with the proper operation of the side curtain airbags.

When side curtain airbags deploy in a frontal collision

One or both side curtain airbags may inflate in a moderate-to-severe angled frontal collision. In this case, the side curtain airbags will deploy slightly after the front airbags.

■ Important Facts About Your Airbags

Always wear your seat belt properly, and sit upright and as far back from the steering wheel as possible while allowing full control of the vehicle. A front passenger should move their seat as far back from the dashboard as possible.

Do not place hard or sharp objects between yourself and a front airbag. Carrying hard or sharp objects on your lap, or driving with a pipe or other sharp object in your mouth, can result in injuries if your front airbag inflates.

Do not attach or place objects on the front airbag covers. Objects on the covers marked **SRS AIRBAG** could interfere with the proper operation of the airbags or be propelled inside the vehicle and hurt someone if the airbags inflate.

Do not attach accessories on or near the side airbags. They can interfere with the proper operation of the airbags, or hurt someone if an airbag inflates.

Do not attach any objects to the side windows or roof pillars. They can interfere with the proper operation of the side curtain airbags.

Do not cover or replace the front seat-back covers. This can prevent your side airbags from properly deploying during a side impact.

⚠ WARNING

An open glove box can cause serious injury to your passenger in a crash, even if the passenger is wearing the seat belt.

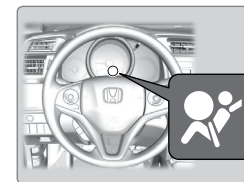
Always keep the glove box closed while driving.

■ Airbag System Indicators

If a problem occurs in the airbag system, the SRS indicator comes on.

SRS (Supplemental Restraint System) indicator

If the indicator comes on at any other time besides vehicle start-up, or does not come on at all, have the system checked by a dealer as soon as possible. If you don't, your airbags and seat belt tensioners may not work properly when they are needed.



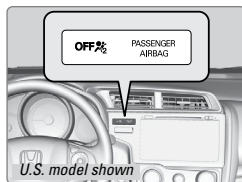
⚠ WARNING

Ignoring the SRS indicator can result in serious injury or death if the airbag systems or tensioners do not work properly.

Have your vehicle checked by a dealer as soon as possible if the SRS indicator alerts you to a possible problem.

Passenger Airbag Off indicator

The indicator comes on to alert you that the front passenger's front airbag has been turned off. This occurs when the front passenger's weight sensors detect 65 lbs (29 kg) or less, the weight of an infant or small child, on the seat.



Infants and small children should always ride properly restrained in a back seat.

Objects placed on the seat can also cause the indicator to come on.

If the front passenger's seat is empty, the passenger's front airbag will not deploy and the indicator will not come on.

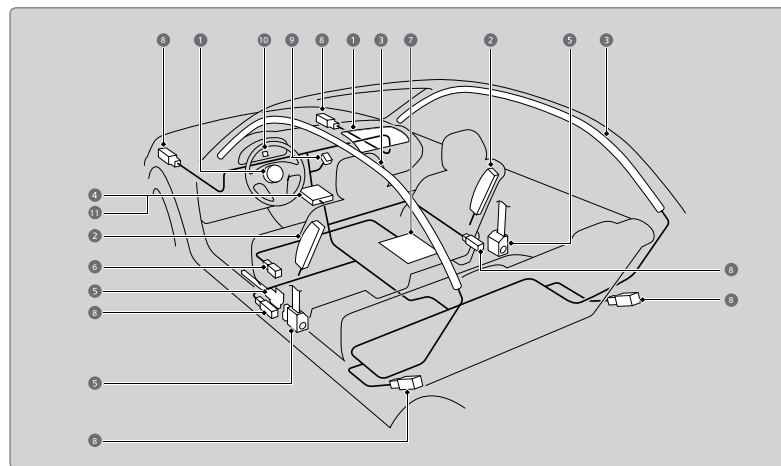
If the indicator comes on with no occupant or objects in the front passenger's seat, something may be interfering with the weight sensors, such as:

- An object hanging on the seat or in the seat-back pocket.
- A child seat or other object pressing against the rear of the seat-back.
- A rear passenger pushing or pulling on the back of the front passenger's seat.
- The front seat or seat-back is forced against an object on the seat or floor behind it.
- An object placed under the front passenger's seat.

If none of these conditions exist, have your vehicle checked by a dealer as soon as possible.

The passenger airbag off indicator may go on and off repeatedly if the total weight on the seat is near the airbag cutoff threshold.

Airbag System Components



- 1 Two SRS (Supplemental Restraint System) front airbags. The driver's airbag is stored in the center of the steering wheel; the front passenger's airbag is stored in the dashboard. Both are marked **SRS AIRBAG**.
- 2 Two side airbags, one for the driver and one for the front passenger. The airbags are stored in the outer edges of the seat-backs. Both are marked **SIDE AIRBAG**.
- 3 Two side curtain airbags, one for each side of the vehicle. The airbags are stored in the ceiling, above the side windows. The front and rear pillars are marked **SIDE CURTAIN AIRBAG**.
- 4 An electronic control unit that continually monitors and can record information about the sensors, the airbag activators, the seat belt tensioners, and driver and front passenger seat belt use when the vehicle is on.
- 5 Automatic front seat belt tensioners. The driver's and front passenger's seat belts incorporate sensors that detect whether or not they are fastened.
- 6 A driver's seat position sensor. If the seat is too far forward, the airbag will inflate with less force.
- 7 Weight sensors in the front passenger's seat. The front passenger's airbag will be turned off if the weight on the seat is 65 lbs (29 kg) or less (the weight of an infant or small child).
- 8 Impact sensors that can detect a moderate-to-severe front or side impact.
- 9 An indicator on the dashboard that alerts you that the front passenger's front airbag has been turned off.
- 10 An indicator on the instrument panel that alerts you to a possible problem with the airbag system or seat belt tensioners.
- 11 A rollover sensor that detects whether the vehicle is about to roll over.

■ Airbag Care

You do not need to, and should not, perform any maintenance on or replace any airbag system components yourself. However, you should have your vehicle inspected by a dealer in the following situations:

When the airbags have deployed

If an airbag has inflated, the control unit and other related parts must be replaced. Similarly, once an automatic seat belt tensioner has been activated, it must be replaced.

When the vehicle has been in a moderate-to-severe collision

Even if the airbags did not inflate, have your dealer inspect the following: the driver's seat position sensor, weight sensors in the passenger's seat, front seat belt tensioners, and each seat belt that was worn during the crash.

Do not remove or modify a front seat without first consulting a dealer

This would likely disable the driver's seat position sensor or the weight sensors in the passenger's seat. If it is necessary to remove or modify a front seat to accommodate a person with disabilities, contact a Honda dealer. For U.S. vehicles, call Honda Automobile Customer Service at (800) 999-1009. For Canadian vehicles, call Honda Canada Customer Relations at (888) 946-6329.

Child Safety

Each year, many children are injured or killed in vehicle crashes because they are either unrestrained or not properly restrained. In fact, vehicle collisions are the number one cause of death of children ages 12 and under.

The National Highway Traffic Safety Administration and Transport Canada recommend that all children ages 12 and under be properly restrained in a rear seat. Some states or provinces/territories have laws restricting where children may ride.

To reduce the number of child deaths and injuries, every state, Canadian province and territory requires that infants and children be properly restrained when they ride in a vehicle.

■ Protecting Child Passengers

- An inflating front or side airbag can injure or kill a child sitting in the front seat.
- A child in the front seat is more likely to interfere with the driver's ability to safely control the vehicle.
- Statistics show that children of all sizes and ages are safer when they are properly restrained in a rear seat.
- Any child who is too small to wear a seat belt correctly must be restrained in an approved child seat that is properly secured to the vehicle using either the lap belt portion of the lap/shoulder belt or the lower anchors of the LATCH system.
- Never hold a child on your lap because it is impossible to protect them in the event of a collision.
- Never put a seat belt over yourself and a child. During a crash, the belt would likely press deep into the child and cause serious or fatal injuries.
- Never let two children use the same seat belt. Both children could be very seriously injured in a crash.
- Do not allow children to operate the doors, windows, or seat adjusters.
- Do not leave children in the vehicle unattended, especially in hot weather when the inside of the vehicle can get hot enough to kill them. They could also activate vehicle controls, causing it to move unexpectedly.

WARNING

Children who are unrestrained or improperly restrained can be seriously injured or killed in a crash.

Any child too small for a seat belt should be properly restrained in a child seat. A larger child should be properly restrained with a seat belt, using a booster seat if necessary.

⚠️ WARNING

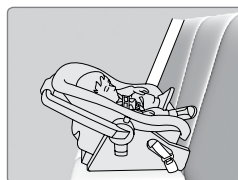
Allowing a child to play with a seat belt or wrap one around their neck can result in serious injury or death.

Instruct children not to play with any seat belt and make sure any unused seat belt a child can reach is buckled, fully retracted, and locked.

■ Protecting Infants

An infant must be properly restrained in a rear-facing, reclining child seat until the infant reaches the seat maker's weight or height limit for the seat, and the infant is at least one year old. Many experts recommend use of a rear-facing seat for a child up to two years old if the child's height and weight are appropriate for a rear-facing seat.

Child seats must be placed and secured in a rear seating position. Rear-facing child seats should never be installed in a forward-facing position.



When properly installed, a rear-facing child seat may prevent the driver or a front passenger from moving their seat all the way back, or from locking their seat-back in the desired position. If this occurs, we recommend that you install the child seat directly behind the front passenger's seat, move the seat as far forward as needed, and leave it unoccupied. Or, you may wish to get a smaller rear-facing child seat.

⚠️ WARNING

Placing a rear-facing child seat in the front seat can result in serious injury or death during a crash.

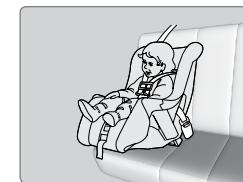
Always place a rear-facing child seat in the rear seat, not the front.

■ Protecting Smaller Children

If a child is at least one year old and within the weight range indicated by the child seat manufacturer, the child should be properly restrained in a firmly secured forward-facing child seat.

We strongly recommend placing a forward-facing child seat in a rear seating position.

Placing a forward-facing child seat in the front seat can be hazardous, even with advanced front airbags that automatically turn the passenger's front airbag off. A rear seat is the safest place for a child.

**⚠️ WARNING**

Placing a forward-facing child seat in the front seat can result in serious injury or death if the front airbag inflates.

If you must place a forward-facing child seat in front, move the vehicle seat as far back as possible, and properly restrain the child.

■ Selecting a Child Seat

Most child seats are LATCH-compatible (Lower Anchors and Tethers for Children). Some have a rigid-type connector, while others have a flexible-type connector. Both are equally easy to use. Some existing and previously owned child seats can only be installed using the seat belt. Whichever type you choose, follow the child seat manufacturer's use and care instructions as well as the instructions in this manual. Proper installation is key to maximizing your child's safety.

In seating positions and vehicles not equipped with LATCH, a LATCH-compatible child seat can be installed using the seat belt and a top tether for added security. This is because all child seats are required to be designed so that they can be secured with a lap belt or the lap part of a lap/shoulder belt. In addition, the child seat manufacturer may advise that a seat belt be used to attach a LATCH-compatible seat once a child reaches a specified weight. Please read the child seat owner's manual for proper installation instructions.

Important considerations when selecting a child seat

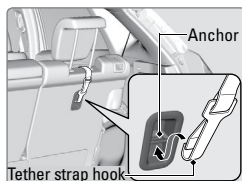
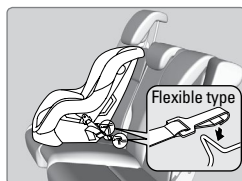
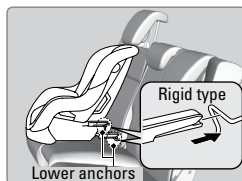
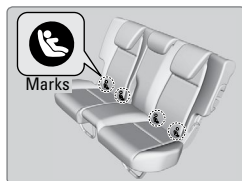
Make sure the child seat meets the following three requirements:

- The child seat is the correct type and size for the child.
- The child seat is the correct type for the seating position.
- The child seat is compliant with Federal Motor Vehicle Safety Standard 213 or Canadian Motor Vehicle Safety Standard 213.

■ Installing a LATCH-Compatible Child Seat

A LATCH-compatible child seat can be installed in either of the two outer rear seats. A child seat is attached to the lower anchors with either the rigid or flexible type of connectors.

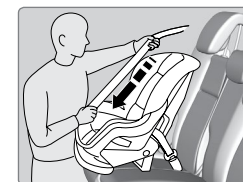
1. Locate the lower anchors under the marks.
2. Raise the head restraint to its highest position.
3. Place the child seat on the vehicle seat, then attach the child seat to the lower anchors according to the instructions that came with the child seat. Make sure that the lower anchors are not obstructed by the seat belt or any other object. If necessary, remove the cargo area cover.*
4. Route the tether strap between the head restraint legs. Make sure the strap is not twisted. Secure the tether strap hook onto the anchor.
5. Tighten the tether strap according to the seat manufacturer's instructions.
6. Make sure the child seat is firmly secured by rocking it forward and back and side to side; little movement should be felt.
7. Make sure any unused seat belt that a child can reach is buckled, the lockable retractor is activated, and the belt is fully retracted and locked. If necessary, reinstall the cargo area cover.*



*if equipped (Canadian models)

■ Installing a Child Seat with a Lap/Shoulder Seat Belt

1. Raise the head restraint to its highest position.
2. Place the child seat on the vehicle seat.
3. Route the seat belt through the child seat according to the seat manufacturer's instructions, and insert the latch plate into the buckle. Insert the latch plate fully until it clicks.
4. Slowly pull the shoulder part of the belt all the way out until it stops. This activates the lockable retractor.
5. Let the seat belt completely wind up into the retractor, then try to pull it out to make sure the retractor is locked. If you are able to pull the shoulder belt out, the lockable retractor is not activated. Pull the seat belt all the way out, and repeat steps 4 – 5.
6. Grab the shoulder part of the seat belt near the buckle, and pull up to remove any slack from the lap part of the belt. When doing this, place your weight on the child seat and push it into the vehicle seat.
7. Make sure the child seat is firmly secured by rocking it forward and back and side to side; little movement should be felt.
8. Make sure any unused seat belt that a child can reach is buckled, the lockable retractor is activated, and the belt is fully retracted and locked.

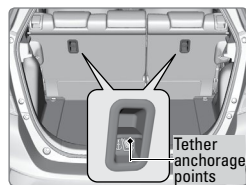


To deactivate a lockable retractor, release the buckle and allow the seat belt to wind up all the way.

■ Adding Security with a Tether

Two tether anchorage points are provided behind the rear outer seating positions and one in the ceiling for the rear center. A child seat that is installed with a seat belt and comes with a tether can use the tether for additional security.

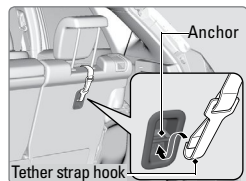
1. **Using an outer anchor:** If necessary, remove the cargo area cover.* Raise the head restraint to its highest position, then route the tether strap through the head restraint legs.



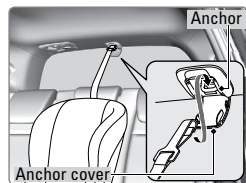
Using the center anchor: Lower the head restraint to its lowest position. Open the anchor cover. Route the tether strap over the head restraint.



2. Secure the tether strap hook onto the anchor. Make sure the strap is not twisted.



3. Tighten the tether strap according to the seat manufacturer's instructions. If necessary, reinstall the cargo area cover.*



*if equipped (Canadian models)

■ Protecting Larger Children

When a child is too big for a child seat, secure the child in a rear seat using the lap/shoulder seat belt.

Have the child sit upright and all the way back, then ensure the following:

- The child's knees bend comfortably over the edge of the seat.
- The shoulder belt crosses between the child's neck and arm.
- The lap part of the seat belt is as low as possible, touching the child's thighs.
- The child can stay seated for the whole trip.



If a lap/shoulder belt cannot be used properly, position the child in a booster seat in a rear seating position. For the child's safety, check that the child meets the booster seat manufacturer's recommendations.

Some U.S. states and Canadian provinces/territories require children to use a booster seat until they reach a given age or weight (e.g., 6 years or 60 lbs). Be sure to check current laws in the state or province/territory where you intend to drive.

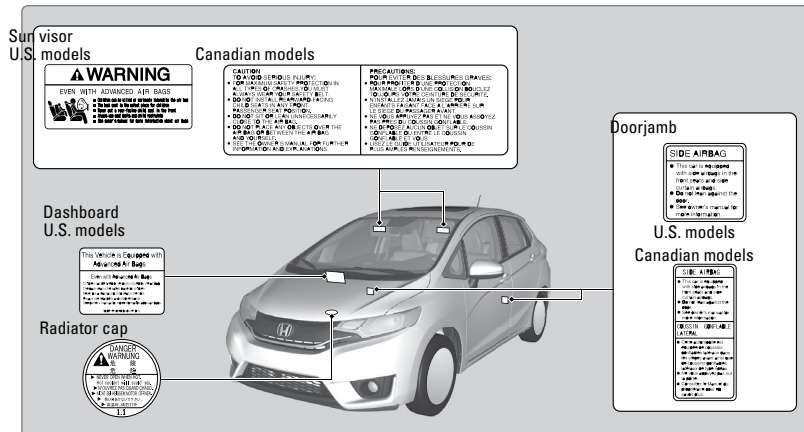
⚠️ WARNING

Allowing a child age 12 or under to sit in the front can result in injury or death if the passenger's front airbag inflates.

If a larger child must ride in front, move the vehicle seat as far to the rear as possible, then have the child sit up properly and wear the seat belt properly, using a booster seat if needed.

Safety Label Locations

Safety labels are in the locations shown. They warn you of potential hazards that can cause serious injury or death. Read these labels carefully.



Reporting Safety Defects

In the U.S.

If you believe that your vehicle has a defect which could cause a crash or could cause injury or death, you should immediately inform the National Highway Traffic Safety Administration (NHTSA) in addition to notifying American Honda Motor Co., Inc.

If NHTSA receives similar complaints, it may open an investigation, and if it finds that a safety defect exists in a group of vehicles, it may order a recall and remedy campaign. However, NHTSA cannot become involved in individual problems between you, your dealer, or American Honda Motor Co., Inc.

To contact NHTSA, you may call the Vehicle Safety Hotline toll-free at 1-888-327-4236 (TTY: 1-800-424-9153); go to <http://www.safercar.gov>, or write to: Administrator, NHTSA, 1200 New Jersey Avenue, SE., Washington, DC 20590. You can also obtain other information about motor vehicle safety from <http://www.safercar.gov>.

In Canada

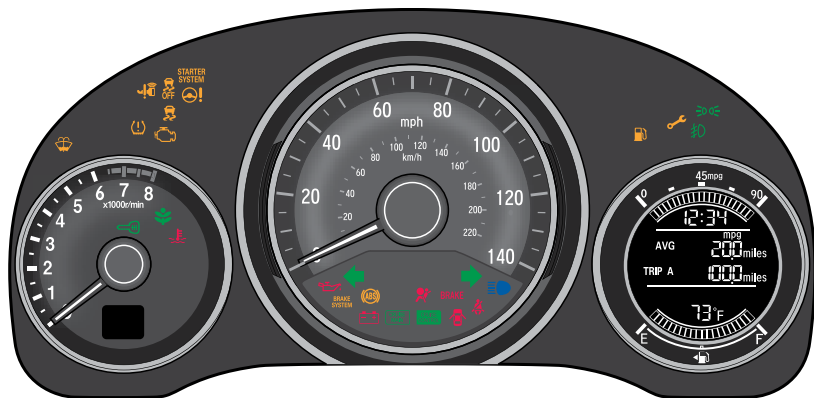
If you believe that your vehicle has a defect which could cause a crash or could cause injury or death, you should immediately inform Honda Canada, Inc., and you may also inform Transport Canada.

If Transport Canada receives similar complaints, it may open an investigation, and if it finds that a safety defect exists in a group of vehicles, it may lead to a recall and remedy campaign. However, Transport Canada cannot become involved in individual problems between you, your dealer, or Honda Canada, Inc.

To contact Transport Canada's Defect Investigations and Recalls Division, you may call 1-800-333-0510. For more information on reporting safety defects or about motor vehicle safety, go to <http://www.tc.gc.ca/roadsafety>.

INSTRUMENT PANEL

Learn about the indicators, gauges, and displays related to driving the vehicle.



Indicators briefly appear with each engine start and then go out. Red and amber indicators are most critical. Blue and green indicators are used for general information.

Malfunction Indicators

These are the most critical indicators. If they come on and stay lit while driving or at any other time, there may be a problem. See your dealer if necessary.

BRAKE Brake system



- Brake fluid is low.
- The brake system has a problem.

Press the brake pedal lightly to check pedal pressure. If normal, check the brake fluid level when you stop. If abnormal, take immediate action. If necessary, downshift the transmission to slow the vehicle using engine braking. Have your vehicle repaired immediately.

Low oil pressure

Engine oil pressure is low. Stop in a safe place. Open the hood. Check the oil level, and add oil if necessary (see page 117). If the indicator does not turn off, have your vehicle repaired immediately.

Charging system

The battery is not charging. Turn off all electrical items, but do not turn off the vehicle to prevent further battery discharge. Have your vehicle repaired immediately.

Supplemental Restraint System (SRS)

There is a problem with one of the airbag systems or seat belt tensioners.



Smart Entry system*

There is a problem with the smart entry system.



Malfunction indicator lamp (check engine light)

- The emissions control system may have a problem, or the fuel cap is loose or missing.
- (Blinks) A misfire in the engine's cylinders is detected. Stop in a safe place, and wait for the engine to cool down.



Anti-lock Brake System (ABS)

There is a problem with the anti-lock brake system. Your vehicle still has normal braking ability, but no anti-lock function.



Tire Pressure Monitoring System (TPMS) (U.S. models only)

There is a problem with the tire pressure monitoring system, or the vehicle is fitted with the compact spare tire.



Vehicle Stability Assist (VSA®)

There is a problem with the VSA system or hill start assist system.



Brake system

There is a problem with a braking system component.



Electric power steering

There is a problem with the system. Stop in a safe place, and restart the vehicle.



Starter system*

There is a problem with the starter system.



High temperature

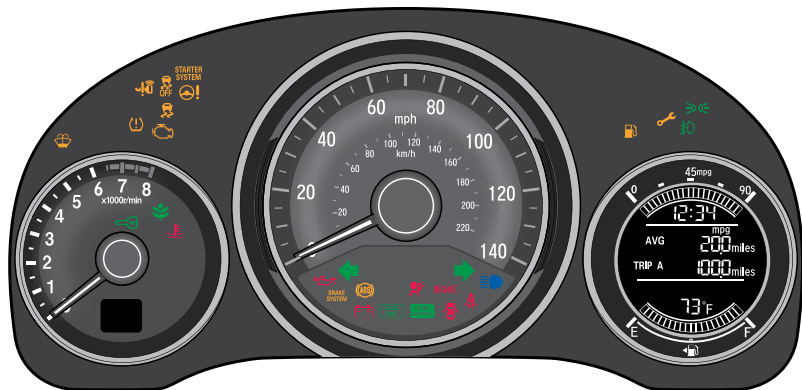
The engine coolant temperature is high. Drive slowly to prevent overheating. If the indicator remains on, immediately stop the vehicle in a safe place (see page 100).



Low temperature

The engine coolant temperature is low. If the indicator remains on, there may be a problem with temperature sensors.

*if equipped



Condition Indicators

These indicators may require you to perform an action.

- BRAKE** U.S. Canada **Parking brake**
Release the parking brake before driving. You will hear a beep if you drive with it not fully released.
- Seat belt reminder**
Make sure seat belts are fastened for you and all passengers. The indicator blinks and beeps sound continuously if you or your front passenger has not fastened your seat belts when you begin driving. If the indicator remains on after seat belts are fastened, see your dealer.
- Door/tailgate open**
A door or the tailgate is open. A beep sounds if any door or the tailgate is open while driving.
- Low fuel**
Refuel as soon as possible. If the indicator blinks, there is a problem with the fuel gauge. See your dealer.
- Low tire pressure**
Stop in a safe place, check tire pressures, and inflate tire(s) if necessary. If the indicator remains on after tire inflation, you need to calibrate the system (see page 102). The indicator also appears if your vehicle is fitted with the compact spare tire. Have your regular tire repaired or replaced as soon as possible.
- Washer fluid level** *(Canadian models only)*
Washer fluid is low. Refill the reservoir (see page 119).
- Maintenance Minder™**
Scheduled maintenance for your vehicle is due (see page 113).



Immobilizer

Your key or remote transmitter cannot be recognized by the vehicle. If the indicator blinks, you may not be able to start the engine. Turn the vehicle off, and then on again. If it continues to blink, there may be a problem with the system. See your dealer.

On/Off Indicators

These indicators remind you when an item is on or off.

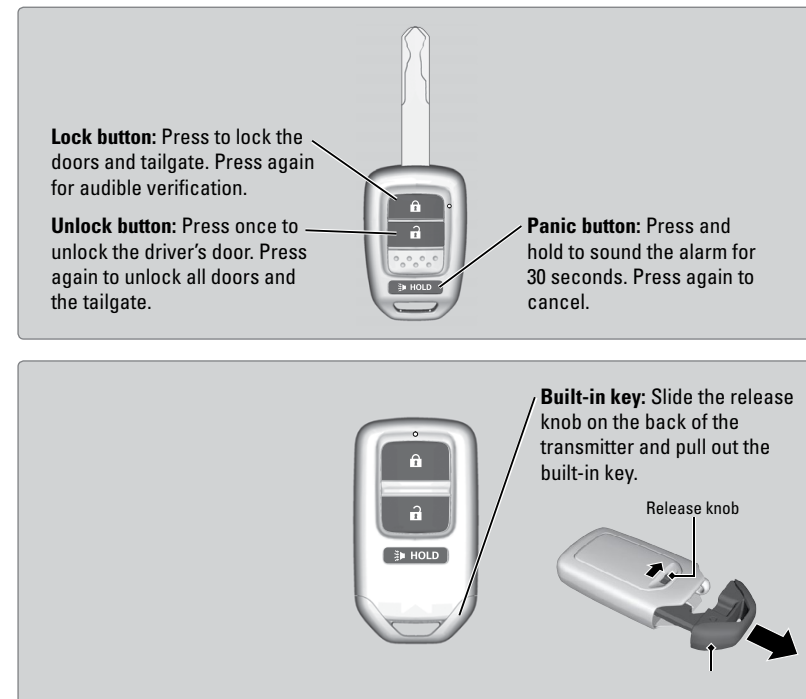
- | | | | |
|---|-------------------------|---|--------------------|
|  | VSA off |  | Fog lights* on |
|  | VSA on (blinks) |  | High beams on |
|  | CRUISE MAIN on |  | Exterior lights on |
|  | CRUISE CONTROL on |  | ECON mode* on |
|  | Turn signals/hazards on | | |

VEHICLE CONTROLS

Learn about the various controls necessary for operating and driving the vehicle.

Using the Key or Remote Transmitter

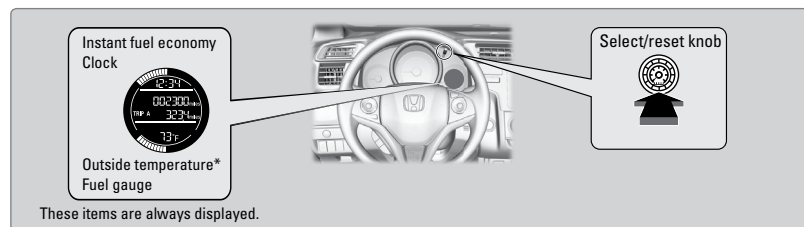
Lock or unlock the doors and tailgate.



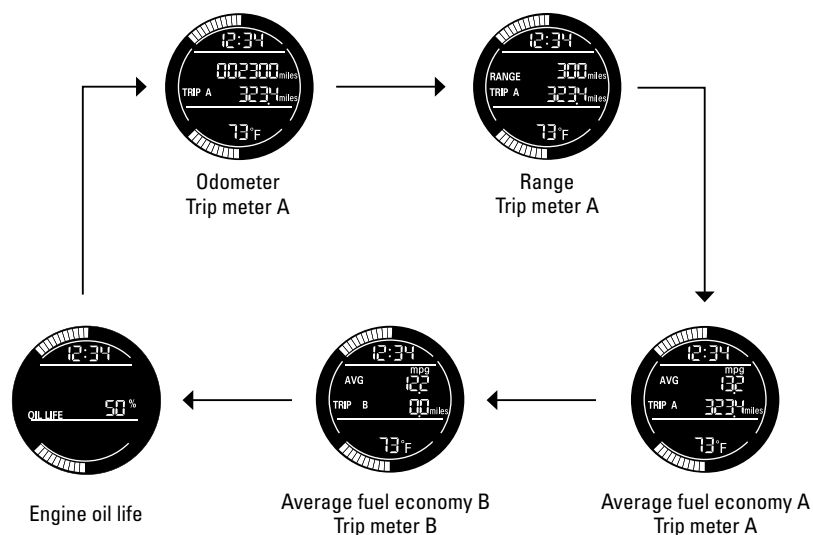
NOTICE
Leaving the key or remote transmitter in the vehicle can result in theft or accidental movement of the vehicle. Always take it with you whenever you leave the vehicle unattended.

Information Display

Consists of several displays that provide you with useful information.



Press the select/reset knob to change information in the center of the display.



*if equipped

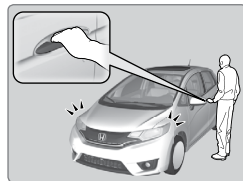
*if equipped

Smart Entry System*

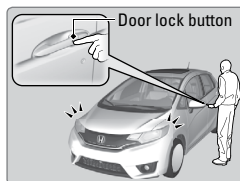
When you carry the remote transmitter (for example, in a pocket or purse) and it is outside the vehicle and within range (about 32 inches or 80 cm), you can lock or unlock the doors and tailgate without handling the transmitter.

■ Unlocking/Locking the Doors

To unlock: Grab the driver's door handle when the vehicle is off to unlock the driver's door. Grab the front passenger's door handle to unlock all doors and the tailgate.

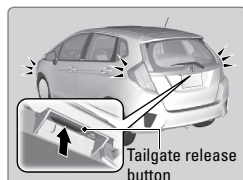


To lock: Press the door lock button on the front door handle when the vehicle is off. If the remote transmitter is inside the vehicle, the doors will not lock.

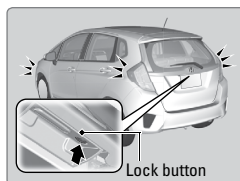


■ Unlocking/Locking the Tailgate

To unlock: Press the tailgate release button under the tailgate handle to unlock the doors and the tailgate. The vehicle can be on or off.



To lock: Press the tailgate lock button to lock the tailgate and all doors. If the remote transmitter is inside the vehicle, the tailgate and doors will not lock.



*if equipped

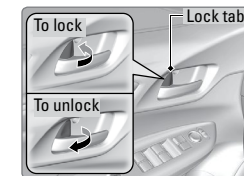
Door Operation

Use several methods to lock or unlock the doors.

■ Using the Lock Tab

To unlock: Pull the lock tab rearward. When you unlock the door using the lock tab on the driver's door, only the driver's door unlocks.

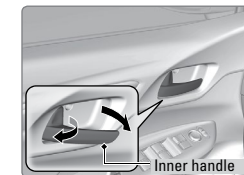
To lock: Push the lock tab forward. When you lock the door using the lock tab on the driver's door, all other doors and the tailgate lock.



■ Using the Front Door Inner Handle

When you pull either front door inner handle, the door unlocks and opens.

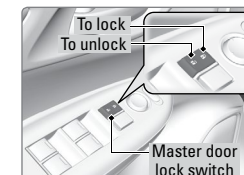
Unlocking and opening the driver's door from the inner handle unlocks all the other doors.



■ Using the Master Door Lock Switch

To unlock: Press the unlock side of the switch to unlock all doors and the tailgate.

To lock: Press the lock side of the switch to lock all doors and the tailgate.



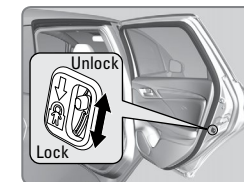
You can use the master door lock switch to customize the door locking and unlocking settings. See the Owner's Manual on the Owner Information CD or at owners.honda.com (U.S.) or myhonda.ca (Canada) for instructions.

■ Childproof Door Locks

The childproof door locks prevent the rear doors from being opened from the inside, regardless of the position of the lock tab.

Slide the lever in the rear door to the lock position, and close the door.

Open the door using the outer door handle.



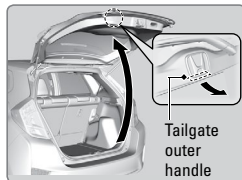
Tailgate Operation

Use these methods to operate the tailgate.

Opening the Tailgate

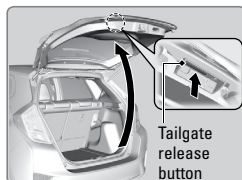
Models without smart entry system

Pull up the tailgate outer handle and lift up the tailgate to open it.



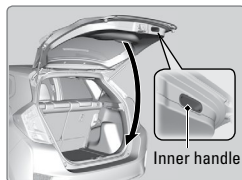
Models with smart entry system

Press the tailgate release button and lift up the tailgate to open it.



Closing the Tailgate

Grab the inner handle and pull the tailgate down. Push it closed from the outside.



Power Window Operation

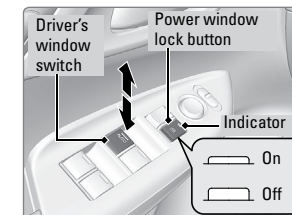
The power windows can be opened and closed when the vehicle is on by using the switches on the doors. The switches on the driver's side can be used to open and close all the windows.

Automatic Operation

To open: Push the switch down firmly.

To close: Pull the switch up firmly.

The window opens or closes completely. To stop the window at any time, push or pull the switch again briefly.



Manual Operation

To open: Push the switch down lightly.

To close: Pull the switch up lightly.

Release the switch when the windows reach the desired position.

Power Window Lock

Push in the power window lock button so only the driver's window can be operated. The driver can operate all other windows using the specific switches.

⚠ WARNING

Closing a power window on someone's hands or fingers can cause serious injury.

Make sure your passengers are away from the windows before closing them.

Power Moonroof Operation*

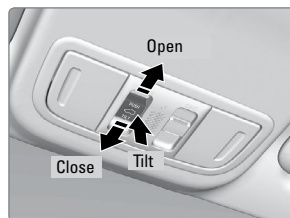
The moonroof can be opened and closed when the vehicle is on by using the switch on the ceiling.

Automatic Operation

To open: Push the switch back firmly to the second detent, then release.

To close: Push the switch forward firmly to the second detent, then release.

The moonroof opens or closes completely. To stop the moonroof at any time, push the switch briefly.



Manual Operation

To open: Push and hold the switch back to the first detent until the desired position is reached.

To close: Push and hold the switch forward to the first detent until the desired position is reached.

Moonroof Tilt

To tilt: Push the center of the switch.

To close: Push the switch forward firmly, then release.

NOTICE

Opening the moonroof in below freezing temperatures or when it is covered with snow or ice can damage the moonroof panel or motor.

WARNING

Closing the moonroof on someone's hands or fingers can cause serious injury. Make sure your passengers are away from the moonroof before closing it.

*if equipped

Interior and Exterior Lights

Operate interior and exterior lights when the vehicle is on or off.

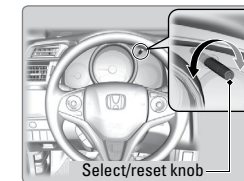
Brightness Control

Adjust instrument panel brightness when the vehicle is on.

To brighten: Turn the knob to the right.

To dim: Turn the knob to the left.

A beep sounds when the brightness reaches minimum or maximum.



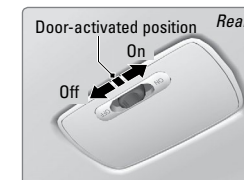
Interior Lights

Change the interior light settings using the switches on the ceiling.

ON position (rear only): Interior lights remain on.

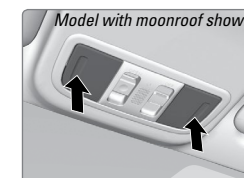
Door-activated position: Interior lights come on when any of the doors are opened, the driver's door is unlocked, or the vehicle is turned off.

OFF position: Interior lights remain off.



Map Lights

Press the front map lights to turn on or off.



■ Exterior Lights

Rotate the switches on the headlight lever to operate the exterior lights. Push the lever forward to turn on the high beams. Return the lever to its original position for low beams.

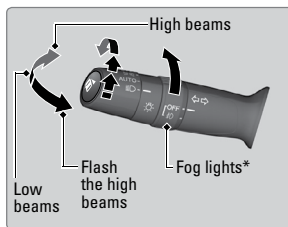
OFF: All exterior lights are off.

☞☞: Turn on exterior lights except headlights.

AUTO: Turn on the automatic lighting feature*. Headlights turn on or off depending on ambient brightness when the vehicle is on. Headlights automatically come on after the wipers are engaged for a certain time.

☰☉: Turn on all exterior lights including headlights.

☞☉: Turn fog lights* on or off.

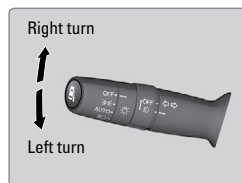


One-Touch Turn Signal

Use this quick and convenient method to signal a lane change.

Lightly push the turn signal lever up or down for a three-blink sequence.

For a continuous signal, push the lever up or down until it locks into place.



*if equipped

Wiper Operation

The windshield wipers and washers can be used when the vehicle is on.

■ Front Wipers

Move the wiper lever up or down to the desired position.

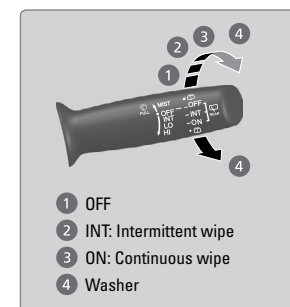
■ Headlight-Wiper Integration*

When the headlights are in the AUTO position, they automatically turn on when the front wipers operate several times within a certain interval. The headlights turn off shortly after the wipers are turned off, or if there is enough ambient light.

■ Rear Wiper

Rotate the end of the wiper lever to the desired position.

When you shift to Reverse (R) and the front wipers are activated, the rear wiper activates even if the switch is off.



NOTICE

Do not use the wipers when the windshield is dry. The windshield will get scratched, or the rubber blades will get damaged.

In cold weather, the blades may freeze to the windshield, becoming stuck. Operating the wipers in this condition may damage the wipers. Use the defroster to warm the windshield, or manually clear the windshield of ice and snow before turning on the wipers.

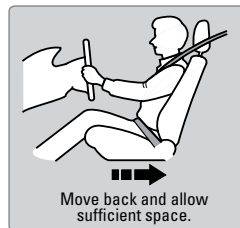
*if equipped

Adjusting the Seats

Make seat adjustments before driving to ensure the best comfort and safety.

■ Adjusting the Front Seats

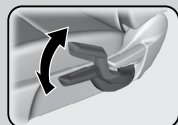
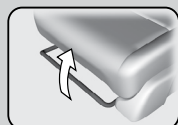
Adjust the driver's seat as far back as possible while allowing you to maintain full control of the vehicle. You should be able to sit upright and well back in the seat, adequately press the pedals without leaning forward, and grip the steering wheel comfortably. The passenger's seat should be adjusted so that it is as far back from the front airbag in the dashboard as possible.



The National Highway Traffic Safety Administration and Transport Canada recommend that drivers allow at least 10 inches (25 cm) between the center of the steering wheel and the chest.

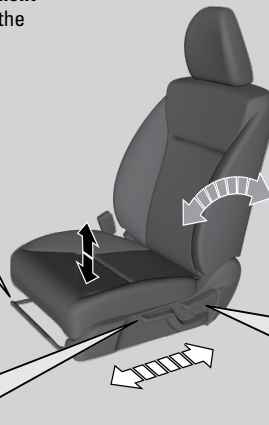
Horizontal position adjustment

Pull up on the bar to move the seat, then release the bar.



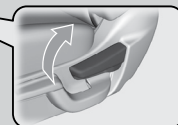
Height adjustment (Driver's seat only)

Pull up or push down the lever to raise or lower the seat.



Seat-back angle adjustment

Pull up the lever to change the angle.



⚠ WARNING

Reclining the seat-back too far can result in serious injury or death in a crash. Adjust the seat-back to an upright position, and sit well back in the seat.

⚠ WARNING

Sitting too close to a front airbag can result in serious injury or death if the front airbags inflate.

Always sit as far back from the front airbags as possible while maintaining control of the vehicle.

⚠ WARNING

Sitting improperly or out of position can result in serious injury or death in a crash.

Always sit upright, well back in the seat, with your feet on the floor.

■ Reclining the Front Seats

You can recline the seat-backs of the front seats so they are level with the rear seat cushions to make a large cushioned area.

1. Remove the front head restraints (see page 40). Store the head restraints in the cargo area.
2. Adjust the front seats forward as far as possible.
3. Pivot the seat-back backward with the seat-back angle adjustment lever to be level with the rear seat cushion.
4. Move the front seat backward until it touches the rear seat.
5. Unlatch the detachable anchor from the anchor buckle, and store the rear center seat belt (see page 8).
6. Adjust the rear seat-back to the desired position.

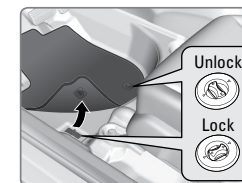


To return the front seats to their original positions, reverse this procedure. When you return the seat-back to its upright position, hold the seat-back to keep it from going up too quickly.

■ Floor Mats*

Position the front seat floor mats properly, and anchor them. If they are not properly positioned, the floor mats can interfere with the front seat functions.

Do not put additional floor mats on top of the anchored mats.

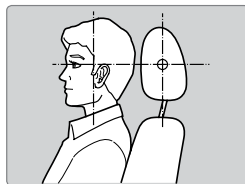


*if equipped

■ Adjusting the Head Restraints

Your vehicle is equipped with head restraints in all seating positions. Head restraints are most effective for protection against whiplash and other rear-impact crash injuries.

The center of the back of the occupant's head should rest against the center of the restraint. The tops of the occupant's ears should be level with the center height of the restraint.

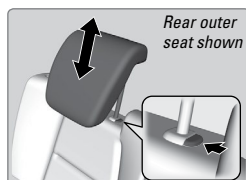
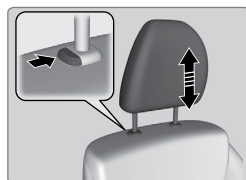


To raise the head restraint: Pull it upward.

To lower the head restraint: Push it down while pressing the release button.

To remove the head restraint: Pull the restraint up as far as it will go. Then push the release button, and pull the restraint up and out.

To reinstall a head restraint: Insert the legs back in place, then adjust the head restraint to an appropriate height while pressing the release button. Pull up on the restraint to make sure it is locked in position.



In order for the head restraint system to work properly:

- Do not hang any items on the head restraints, or from the restraint legs.
- Do not place any object between an occupant and the seat-back.
- Install each restraint in its proper location.

⚠ WARNING

Improperly positioning head restraints reduces their effectiveness and increases the likelihood of serious injury in a crash. Make sure head restraints are in place and positioned properly before driving.

⚠ WARNING

Failure to reinstall, or correctly reinstall, the head restraints can result in severe injury during a crash. Always replace the head restraints before driving.

Rear Seats

Fold rear seats up or down to allow for additional storage space.

■ Folding Down Rear Seats

1. Store the center seat belt. Insert the latch plate into the slot on the side of the anchor buckle. Retract the seat belt into the holder on the ceiling (see page 8).
2. Lower the head restraint to its lowest position (see page 40).
3. Pull the release lever and fold down the seat-back.

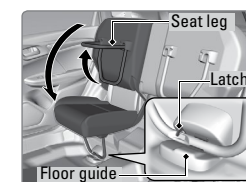
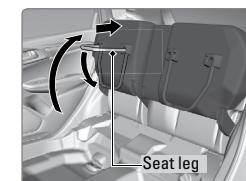
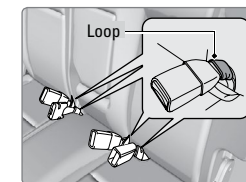


Make sure all items in the cargo area or items extending to the rear seats are properly secured. Loose items can fly forward if you have to brake hard.

To return the seat to the original position, pull up the seat-back to the upright position.

■ Folding Up Rear Seats

1. Make sure the seat belt buckles are in their loops on the seat.
2. Pull up the rear seat cushion.
3. Fold the seat leg down while pushing the seat cushion firmly against the seat-back to lock it.

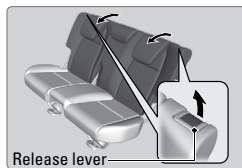


To return the seat to its original position, hold the seat cushion in the upright position, and pull up the seat leg fully. Slowly put down the seat cushion and set the seat leg in the floor guide. A latch comes out when the leg is set properly.

Make sure the seat is firmly secured by rocking it forward and back.

■ Adjusting the Rear Seats

Pull the release lever on the left or right side to change the angle of the seat-back.

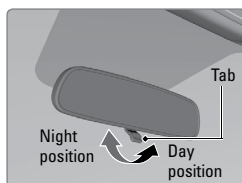


Adjusting the Mirrors

Adjust the angle of the mirrors for the best visibility when you are sitting in the correct driving position.

■ Rearview Mirror with Day/Night Positions

Manually adjust the position to reduce headlight glare from vehicles behind you. Flip the tab to switch between day and night positions.

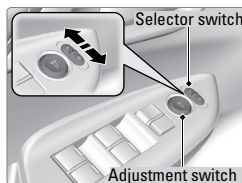


■ Power Door Mirrors

Adjust the power door mirrors when the vehicle is on.

L/R selector switch: Select the left or right mirror. After adjusting the mirror, return the switch to the center position.

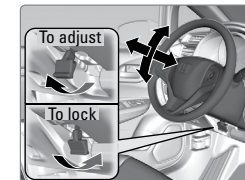
Mirror position adjustment switch: Press the switch left, right, up, or down to move the mirror.



Adjusting the Steering Wheel

The steering wheel height and distance from your body can be adjusted so that you can comfortably grip the steering wheel in an appropriate driving posture.

1. Pull up the steering wheel adjustment lever.
2. Move the steering wheel up or down, and in or out.
3. Push down the steering wheel adjustment lever to lock the steering wheel in position.



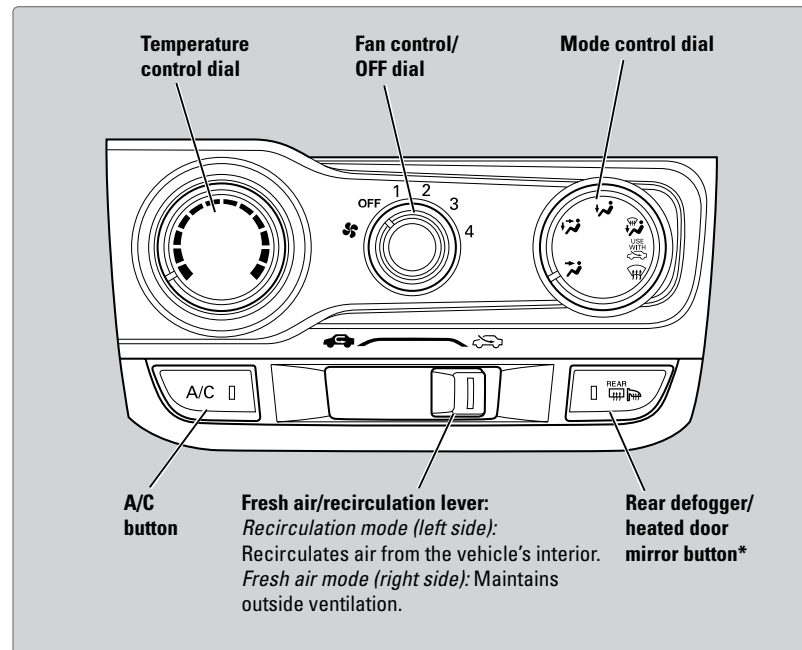
⚠ WARNING

Adjusting the steering wheel position while driving may cause you to lose control of the vehicle and be seriously injured in a crash.

Adjust the steering wheel only when the vehicle is stopped.

Air Conditioning System*

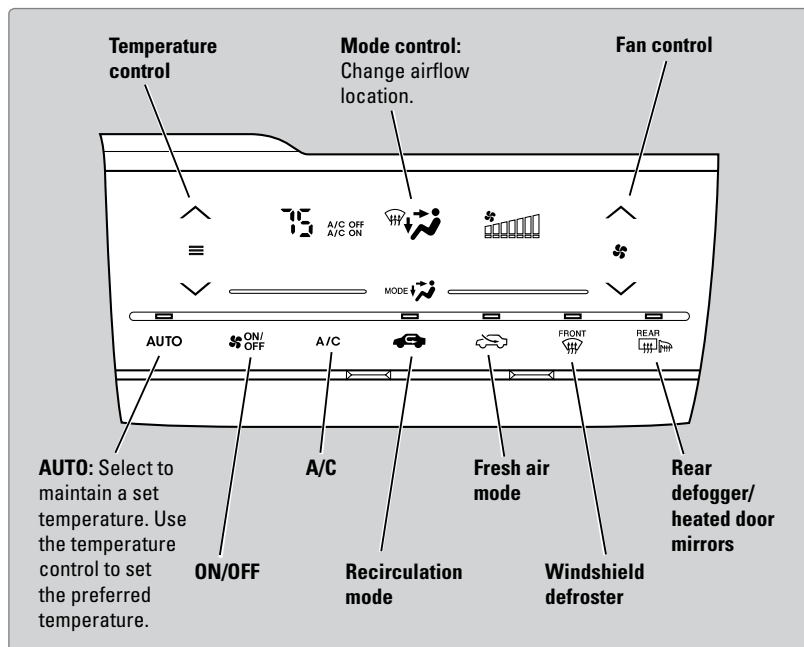
Manually control the front heating and cooling in your vehicle's interior using the buttons and dials on the dashboard.



*if equipped

Climate Control System*

The automatic climate control system can maintain your preferred interior temperature by selecting the proper mix of heated or cooled air and fan speed. Touch the icons on the dashboard to control the system.



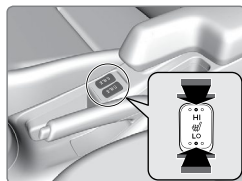
Seat Heaters*

Quickly warm the front seats when the vehicle is on.

Press the switch next to the parking brake to select the HI or LO setting. The indicator for the selected setting appears on the switch.

In the HI setting, the seat heater cycles on and off.

In the LO setting, the seat heater runs continuously and does not automatically turn off.



⚠ WARNING

Heat-induced burns are possible when using seat heaters.

Persons with a diminished ability to sense temperature (e.g., persons with diabetes, lower-limb nerve damage, or paralysis) or with sensitive skin should not use the seat heaters.

*if equipped

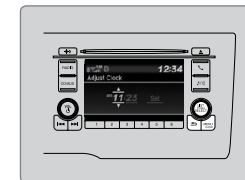
Setting the Clock

Adjust the time using the steps described for your system type.

■ Using the Color Audio System*

Use this method for vehicles with color audio system. Use the selector knob to make and enter selections.

1. Press and hold the MENU/CLOCK button.
2. Select the hour and adjust as necessary.
3. Select the minutes and adjust as necessary.
4. Select Set when complete.
5. Press the Back button to exit the menu.



■ Using the Settings Menu*

Use this method for vehicles with touchscreen. Touch items to make selections.

1. From the HOME screen, select Settings.
2. Select System.
3. Select Clock/Info.
4. Select Clock Adjustment.
5. Adjust the hour and minute values.
6. Select OK when complete.



On vehicles with navigation, the time is automatically set using GPS signals.

*if equipped

Customized Features

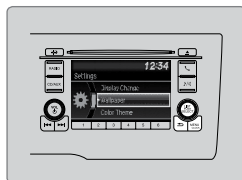
Use the Settings menu to customize certain features when the vehicle is stopped.

How to Change Settings

Models with color audio system

Use the selector knob to make and enter selections.

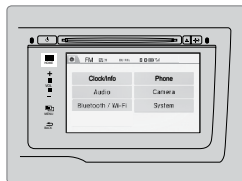
1. Press the MENU/CLOCK button.
2. Select Settings.
3. Select a setting option, and make your preferred changes.
4. Press the Back button to exit the menus.



Models with touchscreen

Select items on the touchscreen to make selections.

1. From the HOME screen, select SETTINGS.
2. Select an option (Phone, Audio, Bluetooth, Info, Camera, System, or Navi*).
3. Select a setting option, and make your preferred changes.
4. Press BACK to exit the menus.



*if equipped

AUDIO AND CONNECTIVITY

Learn how to operate the vehicle's audio system.

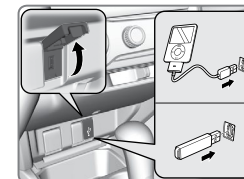
Basic Audio Operation

Connect audio devices and operate buttons and displays for the audio system.

USB Port

1. Open one of the USB covers in the front console.
2. Insert a USB flash drive or other audio device, such as an iPod® or iPhone®, into the USB port.

An additional USB port is located inside the center console.*



iPod and iPhone are trademarks of Apple, Inc. State, provincial, or local laws may prohibit the operation of handheld electronic devices while operating a vehicle.

Accessory Power Socket

Open the socket cover in the front console to use power when the vehicle is on.

An additional power socket is located inside the center console.*

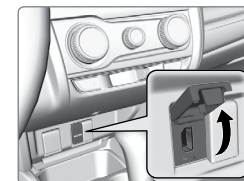


NOTICE

Do not insert an automotive type cigarette lighter element. This can overheat the power socket.

HDMI Port*

1. Open the HDMI cover in the front console.
2. Insert an HDMI cable into the HDMI port.



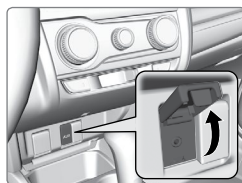
Additional cables and connectors sold separately.

*if equipped

■ Auxiliary Input Jack*

Connect standard audio devices with a 1/8-inch (3.5 mm) stereo miniplug.

1. Open the AUX cover in the front console.
2. Insert the miniplug attached to the audio device into the jack. The audio system switches to AUX mode. Use the device to control the audio.



■ Steering Wheel Controls

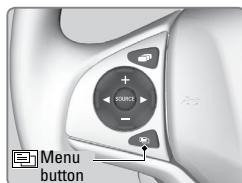
You can operate certain functions of the audio system using the steering wheel controls.

SOURCE button: Cycle through available audio modes.

◀/▶ buttons: Change presets, tracks, albums, or folders.

+/- buttons: Adjust audio volume.

Menu button*: From the audio screen, press and hold to choose options for the current audio mode (models with touchscreen). Use the +/- buttons and the SOURCE button to scroll and enter selections.



FM/AM/XM® Radio

Press ◀ or ▶ for the next or previous station.

Press and hold ◀ or ▶ for the next or previous strong station.

CD/iPod®/USB/Bluetooth® Audio

Press ◀ or ▶ for the next or previous track.

Press and hold ◀ or ▶ for the next or previous folder (CD/USB).

Pandora® (U.S. only)

Press ▶ for the next song.

Press and hold ◀ or ▶ for the next or previous station.

*if equipped

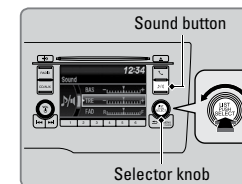
■ Adjusting the Sound

Adjust various sound settings.

Models with color audio system

Use the selector knob to make and enter selections.

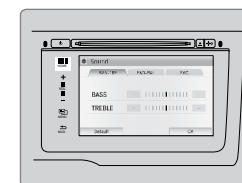
1. Press the Sound button.
2. Select a sound mode to change, and adjust it using the selector knob.
3. Press the Back button to exit the menu.



Models with touchscreen

Make selections using the touchscreen.

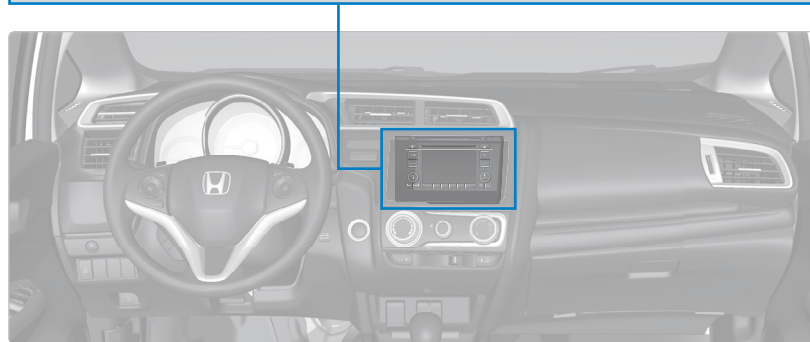
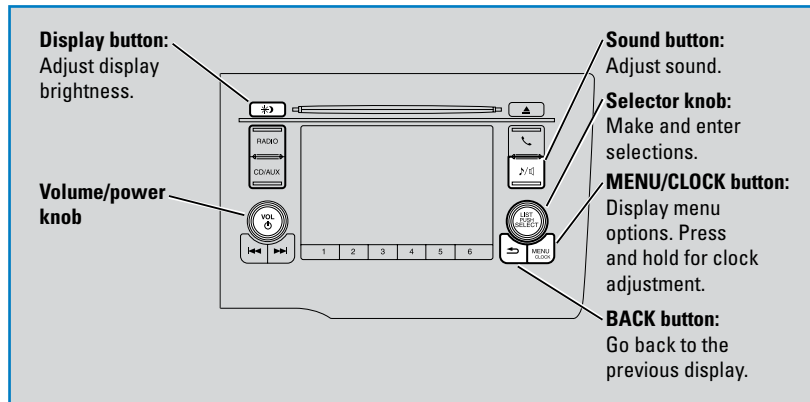
1. From the HOME screen, select Settings.
2. Select Audio.
3. Select Sound.
4. Select the tabs to change the sound mode and adjust the setting.
5. Select OK when complete.



Models with color audio system

Color Audio System*

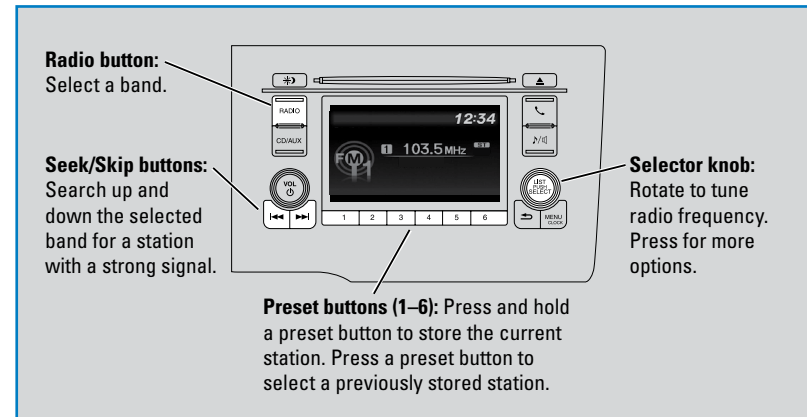
Use the buttons to control the display and audio system.



Models with color audio system

FM/AM Radio

Play FM or AM radio stations.

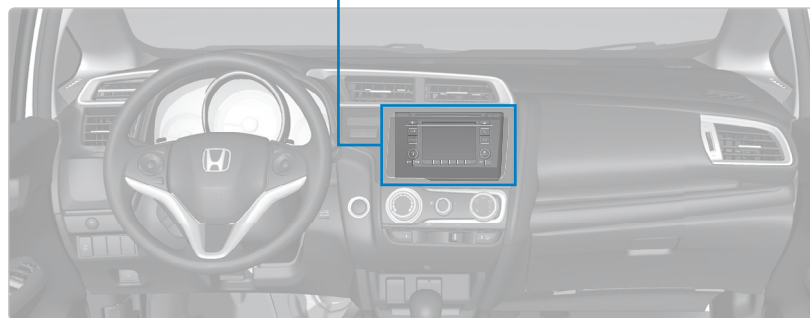
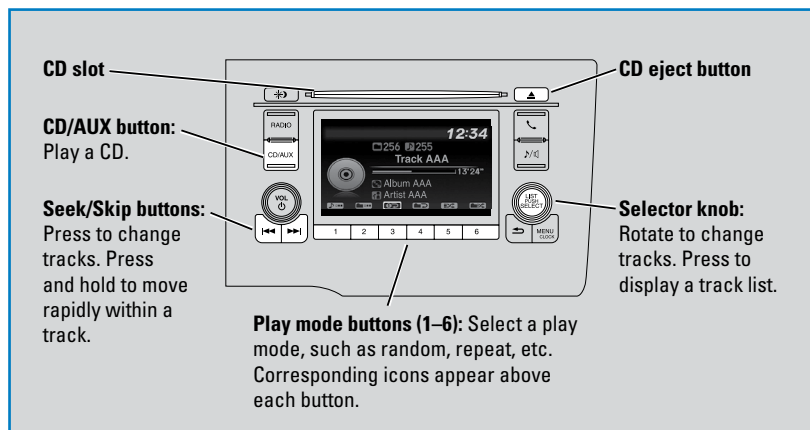


*if equipped

Models with color audio system

Compact Disc (CD)

The audio system supports audio CDs, CD-Rs, and CD-RWs in MP3, WMA, or AAC formats.



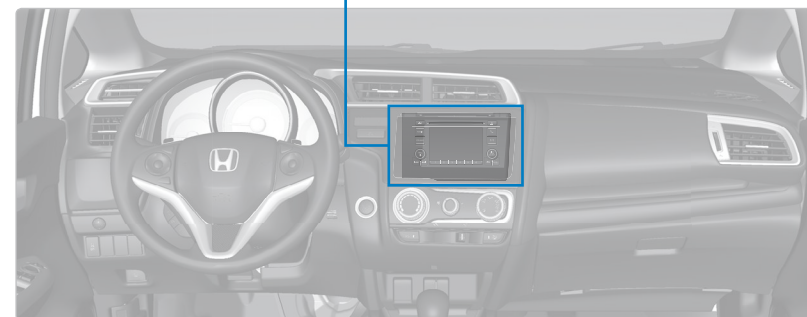
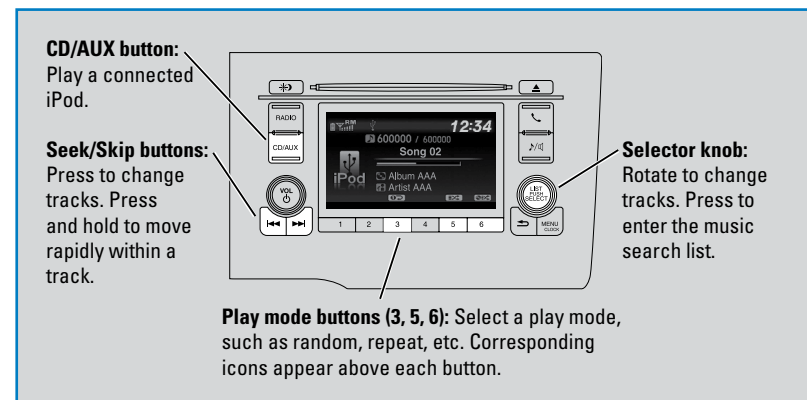
NOTICE

Do not use CDs with adhesive labels or insert a damaged CD. Inserting these types of CDs may cause them to get stuck or damage the audio unit.

Models with color audio system

iPod®

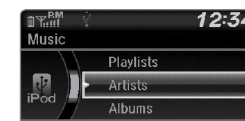
Play and operate an iPod through the vehicle's audio system. Connect your device (see page 47).



■ **Searching for Music**

Use the selector knob to search for tracks stored on the iPod.

1. From the audio screen, press the selector knob.
2. Select a search option.
3. Select the track you want to play.



iPod is a trademark of Apple, Inc.

Models with color audio system

USB Flash Drive

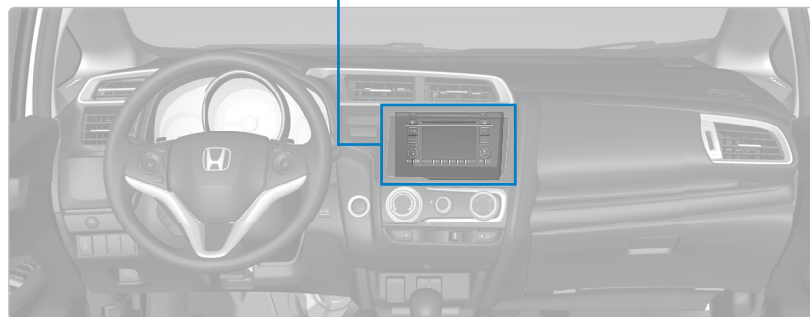
Play and operate a USB flash drive through the vehicle's audio system. Connect your device (see page 47).

CD/AUX button: Play a connected USB flash drive.

Seek/Skip buttons: Press to change tracks. Press and hold to move rapidly within a track.

Selector knob: Rotate to change tracks. Press to display the folder list.

Play mode buttons (1–6): Select a play mode, such as random, repeat, etc. Corresponding icons appear above each button.



■ **Searching for Music**

Use the selector knob to search for tracks stored on the flash drive.

1. From the audio screen, press the selector knob.
2. Select a folder.
3. Select the track you want to play.



Models with color audio system

Bluetooth® Audio

Play streaming or stored audio from your compatible phone through the vehicle's audio system. Visit handsfreelink.com (U.S.) or handsfreelink.ca (Canada) to check phone compatibility. Standard data rates apply with your phone service provider. Connect your phone to **Bluetooth® HandsFreeLink®** (see page 67).

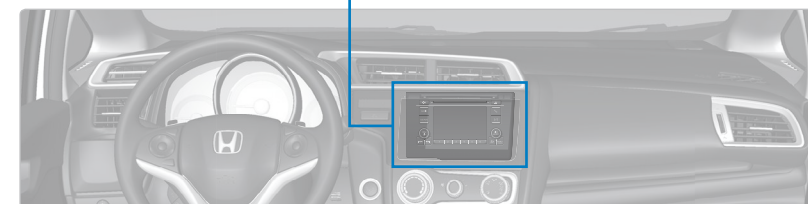
CD/AUX button: Play **Bluetooth® Audio**.

Seek/Skip buttons: Change audio tracks.

Selector knob: Press to enter the music search list.

Preset button 1: Resume audio.

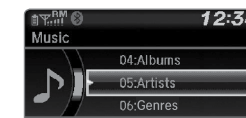
Preset button 2: Pause audio.



■ **Searching for Music**

Use the selector knob to search for tracks stored on the device.

1. From the audio screen, press the selector knob.
2. Select a category.
3. Select the track you want to play.



Notes:

- Make sure the volume on your phone is properly adjusted.
- You may need to enable additional settings on your phone for playback.
- The resume/pause function and remote audio controls are not supported on all phones.

State, provincial, or local laws may prohibit the operation of handheld electronic devices while operating a vehicle. Only launch streaming audio on your phone when it is safe to do so.

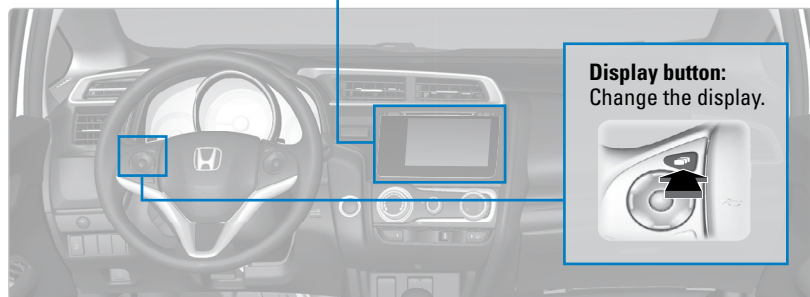
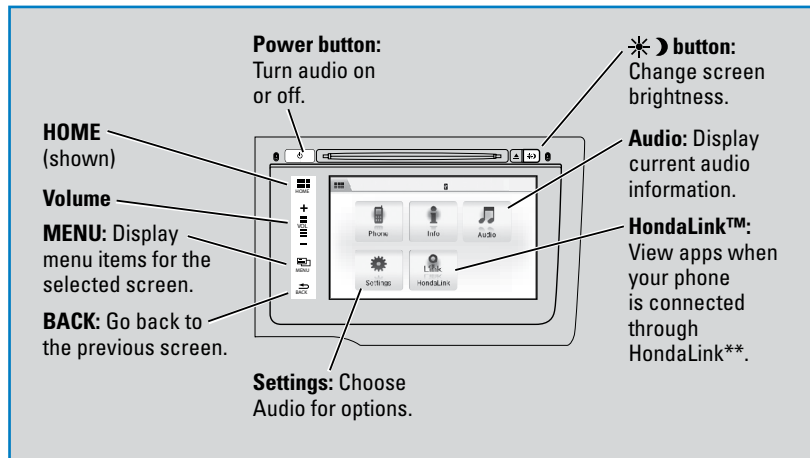
Models with touchscreen

Touchscreen Operation*

Use simple gestures—including touching, swiping, and scrolling—to operate certain audio functions.

Some items may be grayed out during driving to reduce the potential for distraction. You can select them when the vehicle is stopped or use voice commands*.

Wearing gloves may limit or prevent touchscreen response.



Changing Icon Order

You can change the order of the icons on the Home screen.

1. From the Home screen, select Settings.
2. Select System.
3. Select Home.
4. Select Home Screen Edit Order.
5. Select and hold the icon you want to move and slide it to a different position.



HondaLink™

You can connect a compatible smartphone to the audio system to enable integration between the smartphone's approved apps and the vehicle. This allows you to control the phone's apps through the touchscreen.

To check smartphone compatibility and connection instructions, visit handsfreelink.com (U.S.) or handsfreelink.ca (Canada).

To get more information on HondaLink features and apps, visit www.hondalink.com (U.S.) or honda.ca/handsfreelink (Canada).

*if equipped

**HondaLink can be accessed only if the app is installed on your smartphone, and the phone is connected to the system (see page 57).

Models with touchscreen

FM/AM Radio

Play FM or AM radio stations.

Source: Select the FM or AM icon.

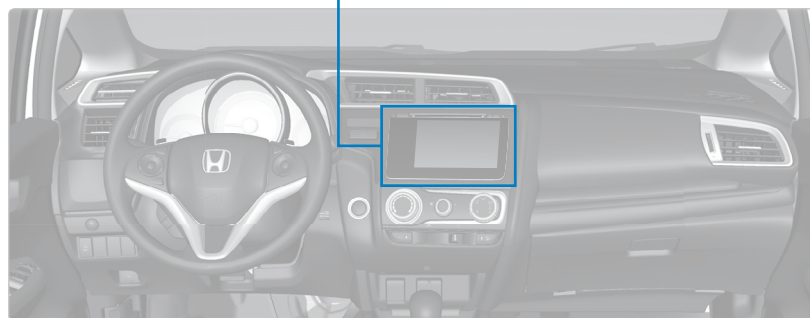
Scan: Scan for each station with a strong signal.

Tune: Change the station.

Presets: Select and hold a preset number to store the current station. Select a preset number to select a previously stored station.

Open/close: Display or hide the station list or preset list.

Seek: Search for the next or previous station with a strong signal.



Models with touchscreen

SiriusXM® Radio*

Available on a subscription basis only. For more information or to subscribe, contact your dealer, or visit www.siriusxm.com (U.S.) or www.sirius.ca (Canada).

Source: Select the XM icon.

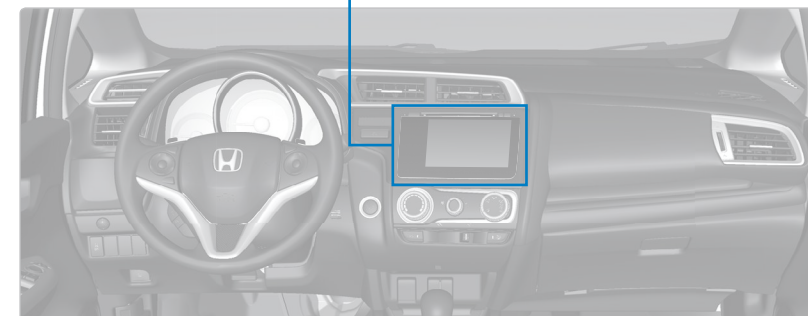
Scan: Scan for each station with a strong signal.

Category: Change the category.

Presets: Select and hold a preset number to store the current station. Select a preset number to select a previously stored station.

Open/close: Display or hide the channel list or preset list.

Channel: Change the channel.



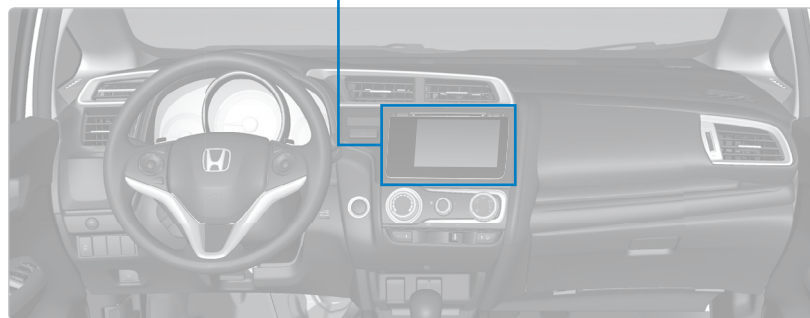
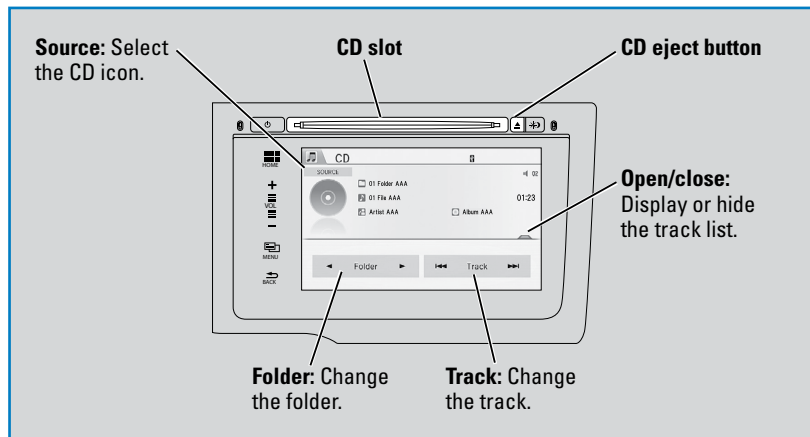
Available in the U.S. and Canada, except Hawaii, Alaska, and Puerto Rico. XM® is a registered trademark of Sirius XM Radio, Inc.

*if equipped

Models with touchscreen

Compact Disc (CD)

The audio system supports audio CDs, CD-Rs, and CD-RWs in MP3, WMA, or AAC formats.



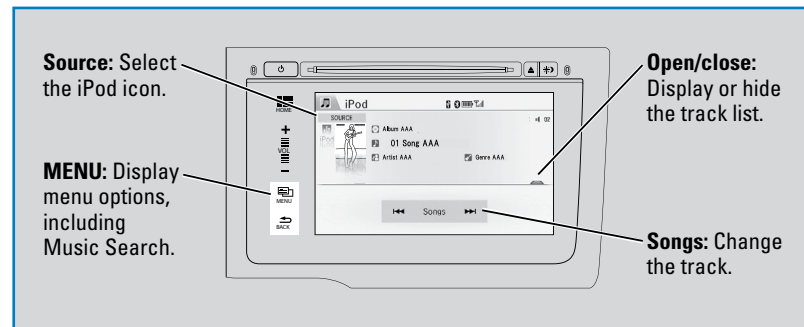
NOTICE

Do not use CDs with adhesive labels or insert a damaged CD. Inserting these types of CDs may cause them to get stuck or damage the audio unit.

Models with touchscreen

iPod®

Play and operate an iPod through the vehicle's audio system. Connect your device to the USB port (see page 47).



■ **Searching for Music**

Use the touchscreen to search for tracks stored on the iPod.

1. From the audio screen, press MENU.
2. Select Music Search.
3. Select a search option.
4. Select the track you want to play.

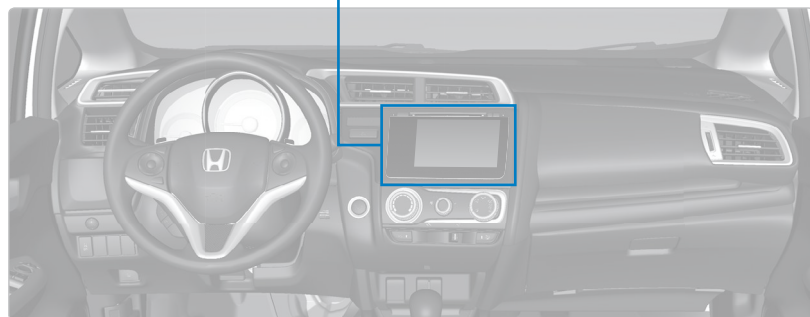
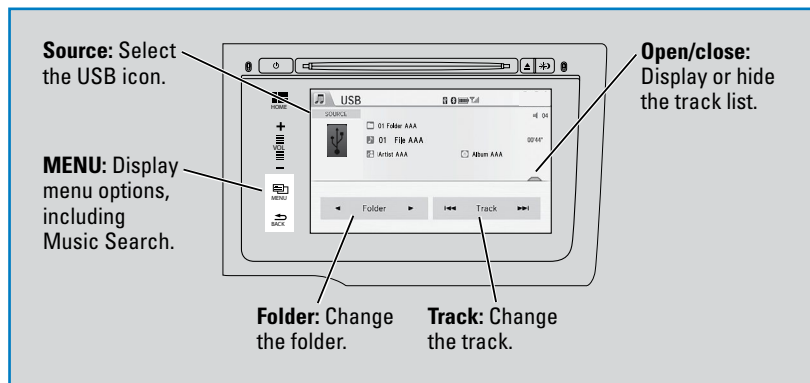


iPod is a trademark of Apple, Inc.

Models with touchscreen

USB Flash Drive

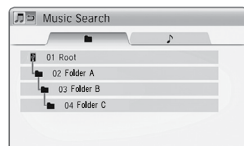
Play and operate a USB flash drive through the vehicle's audio system. Connect your device to the USB port (see page 47).



■ **Searching for Music**

Use the touchscreen to search for tracks stored on the USB flash drive.

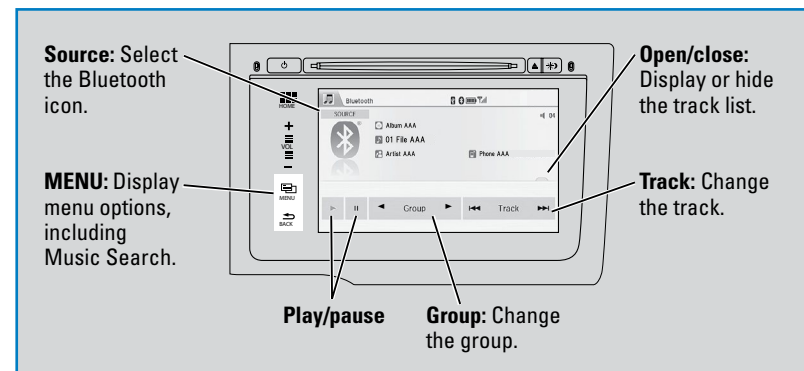
1. From the audio screen, press MENU.
2. Select Music Search.
3. Select a folder.
4. Select the track you want to play.



Models with touchscreen

Bluetooth® Audio

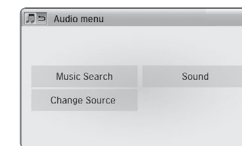
Play streaming or stored audio from your compatible phone through the vehicle's audio system. Visit handsfreelink.com (U.S.) or handsfreelink.ca (Canada) to check phone compatibility. Standard data rates apply with your phone service provider. Connect your phone to **Bluetooth® HandsFreeLink®** (see page 71).



■ **Searching for Music**

Use the touchscreen to search for tracks stored on the device.

1. From the audio screen, press MENU.
2. Select Music Search.
3. Select a search category.
4. Select the track you want to play.



Notes:

- Make sure the volume on your phone is properly adjusted.
- You may need to enable additional settings on your phone for playback.
- The resume/pause function and remote audio controls are not supported on all phones.

State, provincial, or local laws may prohibit the operation of handheld electronic devices while operating a vehicle. Only launch streaming audio on your phone when it is safe to do so.

Models with touchscreen

Pandora®

Play and operate Pandora from your compatible phone through the vehicle's audio system. Visit handsfreelink.com to check phone compatibility. Standard data rates apply with your phone service provider. **Available in the U.S. only.**

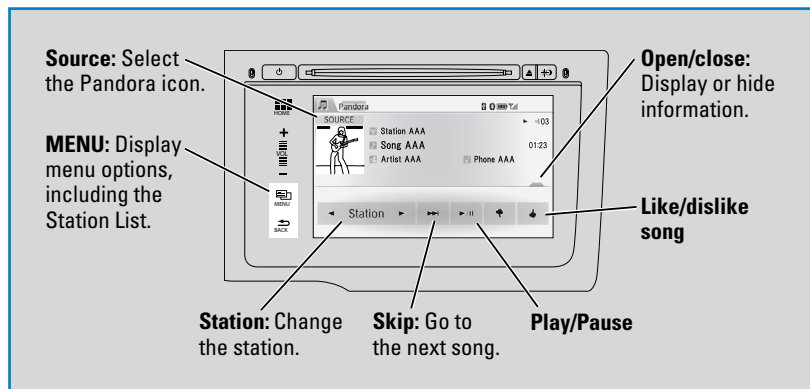
Connect your phone when the vehicle is stopped.

For iPhone:

- Connect via *Bluetooth®* HandsFreeLink® (see page 71) or USB port (see page 47).
- A pop-up may appear on your phone requesting you to allow access for Pandora to be launched.
- If you cannot operate Pandora through the audio system, it may be streaming through *Bluetooth®* Audio. Make sure Pandora is selected on the audio system.
- If Pandora still does not operate, try rebooting the phone and reconnecting the cable if necessary.

For other compatible smartphones:

- Connect via *Bluetooth®* HandsFreeLink® (see page 71).



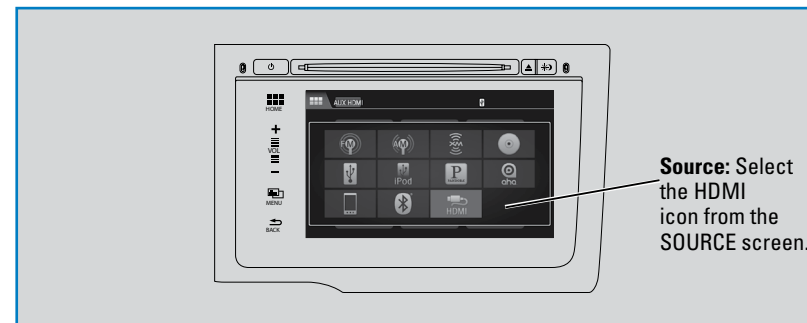
State, provincial, or local laws may prohibit the operation of handheld electronic devices while operating a vehicle. Only launch streaming audio on your phone when it is safe to do so.

Models with touchscreen

HDMI Video

Play video from a compatible device while your vehicle is stopped. Connect your device to the HDMI port (see page 47).

From the connected device, launch the video you want to display on the touchscreen. The device or video resolution must be 720p or lower to view. This feature is limited while the vehicle is moving.



BLUETOOTH® HANDSFREELINK® (HFL)

Learn how to operate the vehicle's hands-free calling system.

Models with color audio system

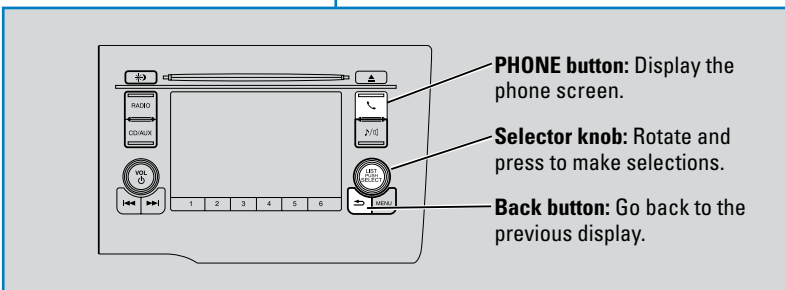
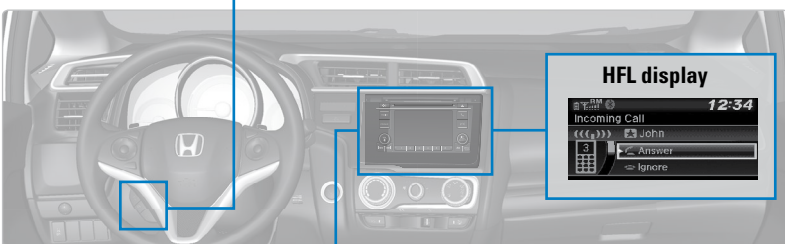
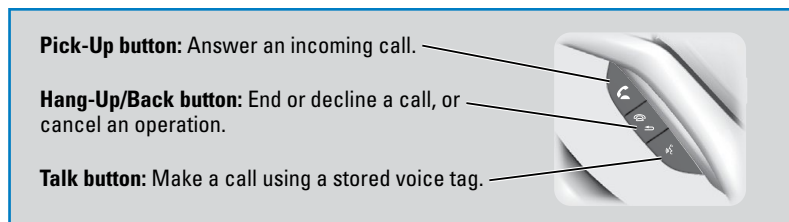
Basic HFL Operation

Make and receive phone calls using the vehicle's audio system, without handling your phone. Visit handsfreelink.com (U.S.) or handsfreelink.ca (Canada) to check phone compatibility.

To reduce the potential for driver distraction, certain manual functions may be inoperable or grayed out while the vehicle is moving. Stop or pull over to perform the function.

HFL Controls

Use the controls to enter information and make selections.



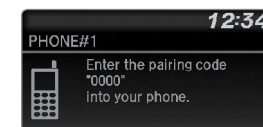
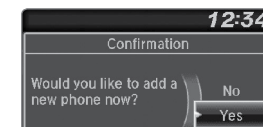
Models with color audio system

Pairing a Phone

To use hands-free phone and streaming audio functions, you must first pair your phone to the system. This can only be done when the vehicle is stopped. Use the selector knob to make and enter selections.

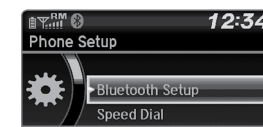
Pairing the First Phone

1. Press the Phone button to go to the Phone screen. A prompt appears. Select Yes.
2. Make sure your phone is in discovery mode. Select OK.
3. The system searches for your phone. Select your phone when it appears on the list. *If your phone does not appear:* Select Phone Not Found and search for HandsFreeLink from your phone. Connect to HFL.
4. The system gives you a pairing code. Compare it to the code that appears on your phone. Connect to HFL from your phone.



Pairing an Additional Phone

1. Press the Phone button to go to the Phone screen. If a prompt appears asking to connect to a phone, select No.
2. Select Phone Setup.
3. Select Bluetooth Setup.
4. Select Add New Device.
5. Make sure your phone is in discovery mode. Select OK.
6. The system searches for your phone. Select it when it appears on the list. *If your phone does not appear:* Select Phone Not Found, and search for HandsFreeLink from your phone. Connect to HFL.
7. The system gives you a pairing code. Enter it on your phone when prompted.



State, provincial, or local laws may prohibit the operation of handheld electronic devices while operating a vehicle.

Models with color audio system

Making a Call

You can make a call using several methods.

■ Dialing a Number

Enter a 10-digit phone number to call. Use the selector knob to make and enter selections. This method is inoperable while the vehicle is moving.

1. Press the Phone button.
2. Select Dial.
3. Enter the phone number. Select the green phone icon to call.



■ Using the Phonebook

When your phone is paired, its phonebook is automatically imported to the system. Use the selector knob to make and enter selections. This method is inoperable while the vehicle is moving.

1. Press the Phone button.
2. Select Phonebook.
3. Scroll through the list to find the name and number you want to call, and select it to call.



■ Storing Speed Dial Entries

Store up to 20 numbers for quick dialing. Use the selector knob to make and enter selections.

1. Press the Phone button.
2. Select Phone Setup.
3. Select Speed Dial, then select Add New.
4. Select an entry method.
5. If desired, you can create a voice tag for the number. Follow the prompts.



■ Using Speed Dial

Make calls quickly using stored speed dial entries. Use the selector knob to make and enter selections.

1. Press the Phone button.
2. Select Speed Dial.
3. Scroll through the list to find the entry you want to call, and select it to call.



Speed dial entries with stored voice tags can be called using the Talk button. Press the Talk button and follow the prompts.

Models with touchscreen

Basic HFL Operation

Make and receive phone calls using the vehicle's audio system, without handling your phone. Visit handsfreelink.com (U.S.) or handsfreelink.ca (Canada) to check phone compatibility.

To reduce the potential for driver distraction, certain manual functions may be inoperable or grayed out while the vehicle is moving. Stop or pull over to perform the function. Voice commands are also available.

■ HFL Controls

Use the controls to enter information and make selections.

Pick-Up button: Answer an incoming call.

Hang-Up/Back button: End or decline a call, or cancel an operation.

Talk button: Make a call using a stored voice tag, or say voice commands*.

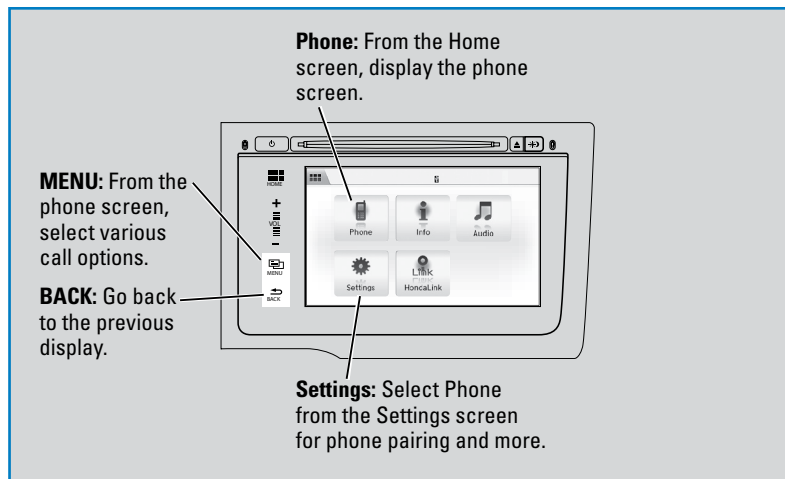
+ / - buttons: Scroll the list after pressing and holding the Menu button.

SOURCE button: Press to enter a selection after pressing and holding the Menu button.

Menu button: From the phone screen, press and hold to display speed dial, call history, or redial.



*vehicles with navigation



Talk Button Tips

For a list of available phone commands, see page 140.

- When using the Talk button, wait until you hear a beep before speaking.
- To bypass the system prompts, simply press the Talk button again to say your command.*
- When the Talk button is pressed, all available voice commands are highlighted in yellow.*
- Speak in a clear, natural voice.
- Reduce all background noise.
- Adjust the dashboard vents away from the microphone on the audio system.
- Close the windows and moonroof.

*vehicles with navigation

Models with touchscreen

Pairing a Phone

To use hands-free phone and streaming audio functions, you must first pair your phone to the system. This can only be done when the vehicle is stopped. Use the touchscreen to make and enter selections.

1. From the Home screen, select Settings.
2. Select Phone.
3. Select Bluetooth Device List.
4. Select Add Bluetooth Device.
5. Make sure your phone is in discovery mode. Select Continue.
6. The system searches for your phone. Select your phone when it appears on the list.
If your phone does not appear: Select Phone Not Found and search for HandsFreeLink from your phone. Connect to HFL.
7. The system gives you a pairing code. Compare it to the code that appears on your phone. Connect to HFL from your phone.
8. The system asks if you want to enable options:
HondaLink Assist: Select On to enable emergency collision notification (see page 73).
Phone Synchronization: Select On to automatically import contacts and call history from your phone.
9. Press BACK to exit the menu.



State, provincial, or local laws may prohibit the operation of handheld electronic devices while operating a vehicle.

Models with touchscreen

Making a Call

You can make a call using several methods.

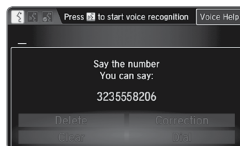
■ Dialing a Number

Enter a 10-digit phone number to call.

Using voice commands

Press the Talk button before you say each command.

1. Say "Dial by number."
2. Say the phone number: For example, "3-1-0-5-5-1-2-3-4."
3. The system begins to dial.



Using the touchscreen

Manual operation is limited while the vehicle is moving. Voice commands are always available.

1. From the Home screen, select Phone.
2. Select MENU.
3. Select Dial.
4. Enter the phone number. Select the green phone icon to call.



■ Using the Phonebook

When your phone is paired, its entire phonebook can be automatically imported to the system. Phone synchronization must be turned on.

Using voice commands

Press the Talk button before you say each command.

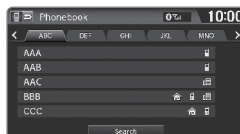
1. Say "Dial by name."
2. Say the phonebook name and phone type. For example, "John Smith mobile."



Using the touchscreen

Manual operation is limited while the vehicle is moving. Voice commands are always available.

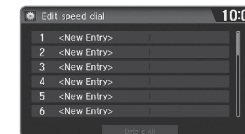
1. From the Home screen, select Phone.
2. Select MENU.
3. Select Phonebook.
4. Scroll through the list to find the name and number you want to call, and select it to call.



■ Storing Speed Dial Entries

Store up to 20 numbers for quick dialing.

1. From the Home screen, select Phone.
2. Select MENU.
3. Select Edit Speed Dial, then select New Entry.
4. Select an entry method.
5. If desired, you can create a voice tag for the number. Follow the prompts.



■ Using Speed Dial

Make calls quickly using stored speed dial entries.

Using voice commands

Press the Talk button before you say each command.

1. Say "Dial by name."
2. Say the stored voice tag name. For example, "John Smith."



Using the touchscreen

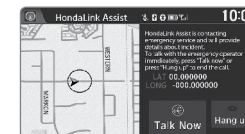
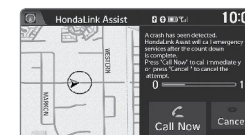
1. From the Home screen, select Phone.
2. Scroll through the list to find the entry you want to call, and select it to call.



HondaLink™ Assist

If your vehicle's airbags deploy or if the unit detects that the vehicle is severely impacted, your vehicle automatically attempts to connect to an operator. Your phone must be paired to the system and have good cellular connection. Visit www.hondalink.com (U.S.) or honda.ca/hondalinkassist (Canada) for more information.

1. Make sure your phone is on and paired to Bluetooth® (see page 71).
2. Select Call Now, or the system automatically connects after 10 seconds. The vehicle information and its position are sent to the operator.
3. Select Talk Now to immediately talk to the operator.
4. When the call is complete, select Hang Up or press the Hang-Up/Back button on the steering wheel.



Models with touchscreen

SMS Text Messaging and E-Mail*

Receive and send messages from your paired and connected phone. Visit handsfreelink.com (U.S.) or handsfreelink.ca (Canada) to check phone compatibility. Standard message rates apply with your phone service provider. This feature is limited while the vehicle is moving.

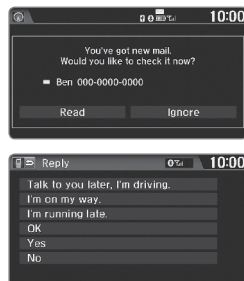
Receiving and Responding to Messages

When you receive a new message, a pop-up appears on the touchscreen. You can view the message when the vehicle is stopped. You can also reply to it using fixed phrases or call the sender.

1. When the prompt appears, select Read.
2. The message is displayed, and the system reads it aloud.

To reply: With the message open, select Reply, and choose one of the six available responses. Select Send to send the message. You cannot create a new text message.

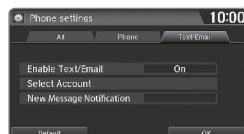
To call the sender: With the message open, select Call.



Selecting an Account

If your phone has both text message and e-mail accounts, you can select only one of them at a time to be active and receive notifications.

1. From the Home screen, select Settings.
2. Select Phone.
3. Select Select Account.
4. Select Text Message or an e-mail account.

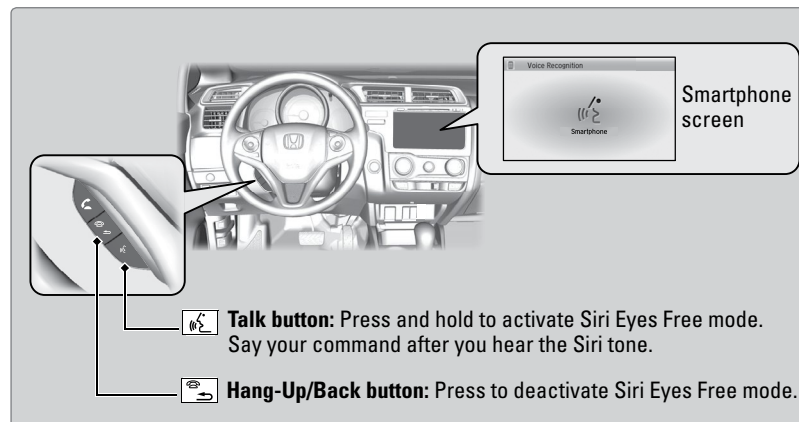


*if equipped

Models with touchscreen

Siri™ Eyes Free

Activate Siri through your vehicle when an iPhone® is paired to the system. Visit handsfreelink.com (U.S.) or handsfreelink.ca (Canada) to check phone compatibility.



Here are some examples of Siri commands:

“Call John Smith”

“Read my new text message”

“Find a nearby sushi restaurant”

“Remind me to pick up dinner”

“Set up a meeting today at 3 p.m.”

“Play song XYZ”

Notes:

- Any requests that include visual feedback from Siri on your phone are not displayed in the vehicle.
- Certain commands rely on the iPhone's features and existing apps.
- To hear turn-by-turn directions or songs through the vehicle, set the audio source to *Bluetooth®* Audio.

Siri and iPhone are trademarks of Apple, Inc.

NAVIGATION*

Learn how to enter a destination and operate the navigation system.

Basic Navigation Operation

A real-time navigation system uses GPS and a map database to show your current location and help guide you to a desired destination. You can operate the system using voice commands or the touchscreen.

To reduce the potential for driver distraction, certain manual functions may be inoperable or grayed out while the vehicle is moving. Voice commands are always available.

Steering Wheel Controls

Use the steering wheel controls to control the system.

Hang-Up/Back button: Press to cancel a command or operation.

Talk button: Press to say voice commands.

+ / - buttons: Scroll the list after pressing and holding the MENU button.

SOURCE button: Press to enter a selection after pressing and holding the MENU button.

Menu button: From the map screen, press and hold to display Go Home and other options.



WARNING

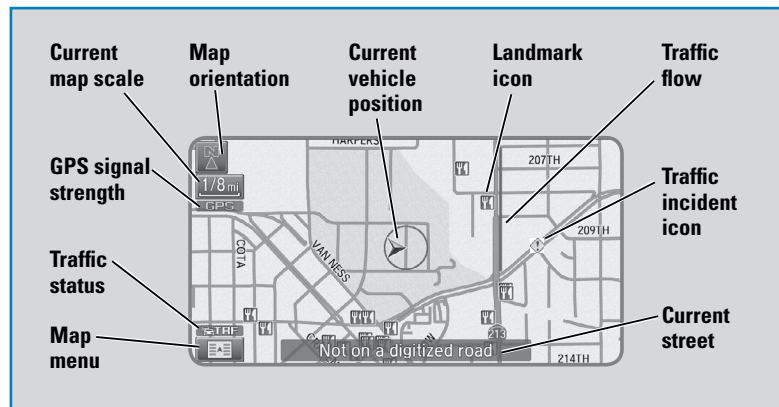
Using the navigation system while driving can take your attention away from the road, causing a crash in which you could be seriously injured or killed.

Operate system controls only when the conditions permit you to safely do so.

*if equipped

Navigation Display and Controls

Use the touchscreen to enter information and make selections.



HOME (screen shown)

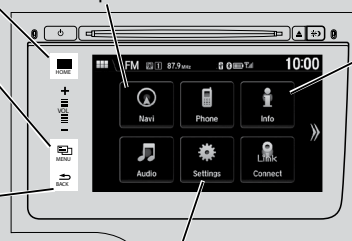
Navi: Display the map screen.

MENU: From the map screen, select various destination options.

BACK: Go back to the previous display.

Settings: Select Navi from the Settings screen for map and navigation options.

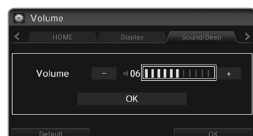
Info: Select items such as trip computer, traffic incidents, and more.



Voice Prompt Volume

Adjust volume for navigation and voice command confirmation. This does not affect audio or *Bluetooth*® HandsFreeLink® volume, which is controlled by the volume bar.

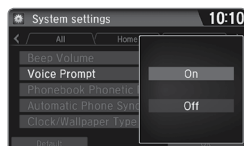
1. From the Home screen, select Settings.
2. Select System.
3. Select Volume.
4. Adjust the level, or select off.



Voice Prompt

Turn the voice feedback feature on or off.

1. From the Home screen, select Settings.
2. Select System.
3. Select Voice Prompt.
4. Select On or Off.



Talk Button Tips

For a full list of navigation commands, see page 135.

- When using the Talk button, wait until you hear a beep before speaking.
- To bypass the system prompts, simply press the Talk button again to say your command.
- When the Talk button is pressed, all available voice commands are highlighted in yellow.
- Speak in a clear, natural voice.
- Reduce all background noise.
- Adjust the dashboard vents away from the microphone on the audio system.
- Close the windows and moonroof.

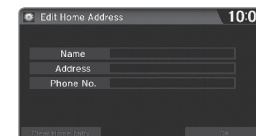
Entering a Destination

Use multiple methods to enter a destination.

Home Address

Store your home address in the system so you can easily route to it.

1. From the Home screen, select Settings.
2. Select Navigation.
3. Select Edit Go Home (1 or 2).
4. Enter the address, and select OK when complete.



When your home address is stored, you can press the Talk button and say “Go home” at any time. You can also select Go home from the navigation menu.

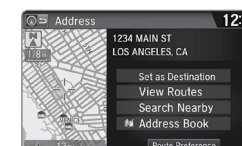
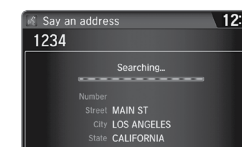
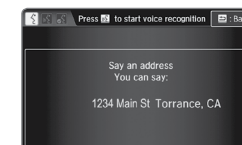
Street Address

Enter a street address using voice commands. Press the Talk button before saying each command.

You can also enter the address manually when the vehicle is stopped. From the map screen, press MENU and select Address. Follow the prompts.

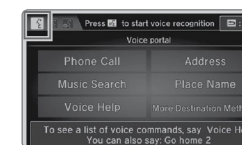
U.S. models

1. From the Voice Portal screen, say “Address.”
2. The system prompts you to say the entire address. For example, say “1-2-3-4 Main Street, Los Angeles, California.”
3. The system interprets the address by state, city, street, and address number. If necessary, you may have to clarify similar matches.
4. Say “Set as destination” to set the route.



Canadian models

1. From the Voice Portal screen, say “Address.”
2. Follow the prompts.

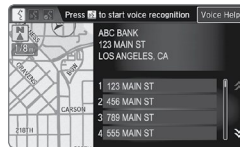


Place Category

Enter a destination or point of interest using voice commands. Press the Talk button before saying each command.

You can also enter the place name manually when the vehicle is stopped. From the map screen, press MENU and select Place Name. Follow the prompts.

1. From the Voice Portal screen, say "Place name."
2. Say a category, for example "ATM/Bank."
3. Say the name of the place, for example "ABC Bank."
4. The system interprets the name. If necessary, you may have to clarify similar matches.
5. Say "Set as destination" to set the route.



Find Nearest Place

Enter a destination by category and distance using voice commands. Press the Talk button before saying each command.

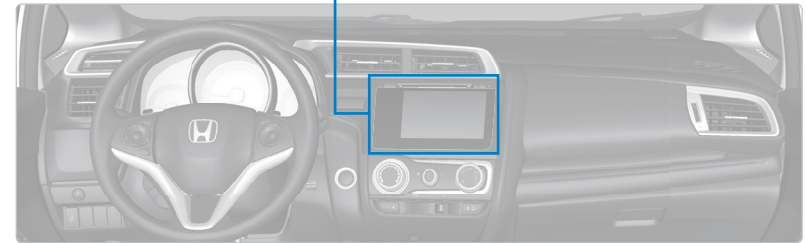
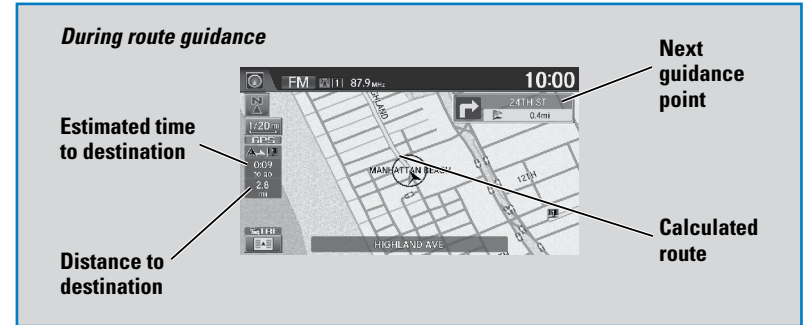
1. Say "Find nearest" and a place. For example, "Find nearest ATM."
2. A list of the nearest places in your area is displayed by shortest distance to destination.
3. Say the number next to the destination you want to select.
4. Say "Set as destination" to set the route.



Routing

After a destination is set, you can alter or cancel your route.

Map Legend



DRIVING

Learn about preparation for driving, as well as other features.

Before Driving

Check the following items before you begin driving.

■ Exterior Checks

- Make sure there are no obstructions on the windows, door mirrors, exterior lights, or other parts of the vehicle.
- Remove any frost, snow, or ice.
- Make sure the hood is securely closed.
- Heat from the engine and exhaust can ignite flammable materials left under the hood, causing a fire. If you've parked your vehicle for an extended period, inspect and remove any debris that may have collected, such as dried grass and leaves that have fallen or have been carried in for use as a nest by a small animal. Also check under the hood for leftover flammable materials after you or someone else has performed maintenance on your vehicle.
- Make sure the tires are in good condition.
- Make sure there are no people or objects behind or around the vehicle.

NOTICE

If the doors are frozen shut, use warm water around the door edges to melt any ice. Do not try to force them open, as this can damage the rubber trim around the doors. When done, wipe dry to avoid further freezing.

■ Interior Checks

- Store or secure all items on board properly.
- Do not pile items higher than the seat height.
- Do not place anything in the front seat footwells. Make sure to secure the floor mats.
- If you have any animals on board, do not let them move freely around in the vehicle.
- Securely close and lock all doors and the tailgate.
- Adjust your seating position, mirrors, and steering wheel properly.
- Make sure items placed on the floor behind the front seats cannot roll under the seats.
- Everyone in the vehicle must fasten their seat belt.
- Make sure that the indicators in the instrument panel come on when you start the vehicle, and go off soon after.

■ Taking a Detour

You can calculate a detour route manually if you encounter a road closure or other obstacle.

1. When en route, press MENU from the map screen.
2. Select Detour. The system attempts to calculate a new route by avoiding the next 5 miles (8 km) while on a freeway or 1 mile (1 km) while on a surface street.



■ Traffic

View traffic flow, incidents, and construction in major metro areas. You can also route around congestion or incidents using voice commands. Press the Talk button before saying each command. **Available on U.S. models only.**

1. When en route, say "Display traffic incidents." A list of incidents on your route appears.
2. Say the number of the incident you want to avoid.
3. Say "Avoid" and the incident list returns.
4. Say "Recalculate route" to set the new route.



■ Canceling Your Route

You can cancel your route at any time.

1. When en route, press MENU from the map screen.
2. Select Cancel Route. The route is cleared and the map screen returns. You can also press the Talk button and say "Cancel route."



In addition:

- During the first 600 miles (1,000 km) of operation, avoid sudden acceleration or full throttle operation so as not to damage the engine or powertrain.
- Avoid hard braking for the first 200 miles (300 km). You should also follow this when the brake pads are replaced.

⚠ WARNING

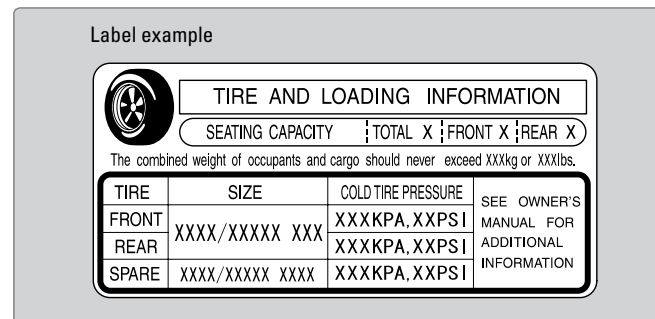
Improper accessories or modifications can affect your vehicle's handling, and stability, and performance, and cause a crash in which you can be seriously hurt or killed.

Follow all instructions in the vehicle owner's guide regarding accessories and modifications.

Maximum Load Limit

Carrying too much cargo or improperly storing it can affect your vehicle's handling, stability, stopping distance, and tires, and make it unsafe.

The maximum load for your vehicle is 850 lbs (385 kg). See the Tire and Loading Information label on the driver's doorjamb.




This figure includes the total weight of all occupants, cargo, and accessories, and the tongue load if you are towing a trailer. Below are the steps for determining the correct load limit:

1. Locate the statement "The combined weight of occupants and cargo should never exceed XXX kg or XXX lbs." on your vehicle's placard.
2. Determine the combined weight of the driver and passengers that will be riding in your vehicle.
3. Subtract the combined weight of the driver and passengers from XXX kg or XXX lbs.
4. The resulting figure equals the available amount of cargo and luggage load capacity. For example, if the "XXX" amount equals 1,400 lbs. and there will be five 150 lb. passengers in your vehicle, the amount of available cargo and luggage load capacity is 650 lbs. (1,400 - 750 (5 x 150) = 650 lbs.)
5. Determine the combined weight of luggage and cargo being loaded on the vehicle. That weight may not safely exceed the available cargo and luggage load capacity calculated in step 4.
6. If your vehicle will be towing a trailer, load from your trailer will be transferred to your vehicle. Consult the Owner's Manual on the Owner Information CD or at owners.honda.com (U.S.) or myhonda.ca (Canada) to determine how this reduces the available cargo and luggage load capacity of your vehicle.

In addition, the total weight of the vehicle, all occupants, accessories, cargo, and trailer tongue load must not exceed the Gross Vehicle Weight Rating (GVWR) or the Gross Axle Weight Rating (GAWR). Both are on a label on the driver's doorjamb.

Load limits example

Example 1

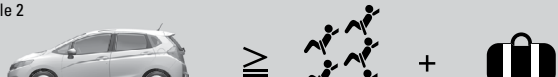


Max load
850 lbs
(385 kg)

Passenger weight
150 lbs x 2 = 300 lbs
(68 kg x 2 = 136 kg)

Cargo weight
550 lbs
(249 kg)

Example 2



Max load
850 lbs
(385 kg)

Passenger weight
150 lbs x 5 = 750 lbs
(68 kg x 5 = 340 kg)

Cargo weight
100 lbs
(45 kg)

⚠ WARNING

Overloading or improper loading can affect handling and stability and cause a crash in which you can be hurt or killed.

Follow all load limits and other loading guidelines in this guide.

The headlight aim on your vehicle was set by the factory, and does not need to be adjusted. However, if you regularly carry heavy items in the cargo area, have the aiming readjusted at your dealer or by a qualified technician.

Your vehicle is not designed to tow a trailer. Attempting to do so can void your warranties.

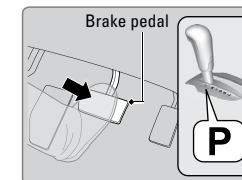
Starting to Drive

Turn on the vehicle and start the engine to begin driving.

■ Before Starting the Engine

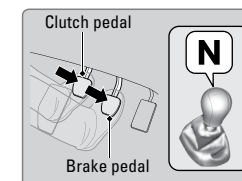
Continuously variable transmission (CVT)

Check that the shift lever is in Park (P), then press the brake pedal. Keep your foot firmly on the brake pedal when starting the engine.



Manual transmission

Check that the shift lever is in Neutral (N). Press the brake pedal with your right foot, and press the clutch pedal all the way down with your left foot. Keep your foot firmly on the brake pedal when starting the engine.



The engine is harder to start in cold weather and in thinner air found at altitudes above 8,000 feet (2,400 m). When starting the engine in cold weather, turn off all electrical accessories such as the lights, climate control system, and rear defogger in order to reduce battery drain.

■ Starting the Ignition*

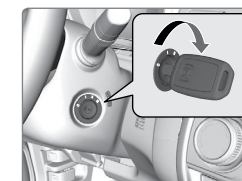
Insert the key into the ignition and turn to turn on the vehicle or start the engine.

🔒 **LOCK:** Insert and remove the key in this position.

🔊 **ACCESSORY:** Operate the audio system and other accessories in this position.

🚗 **ON:** This is the position when driving.

🔑 **START:** This position is for starting the engine. The switch returns to ON when you release the key.



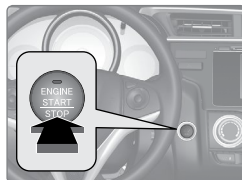
*if equipped

■ Changing the Power Mode*

Use the ENGINE START/STOP button to cycle through power modes or start the engine.

Accessory or On mode: Press ENGINE START/STOP once without pressing the brake pedal for Accessory mode. Press it again for On mode.

Starting the engine: Press and hold the brake pedal (and the clutch for manual transmission), then press ENGINE START/STOP. Keep your foot firmly on the brake pedal when starting the engine.



Turning the vehicle off: Shift to Park (P) (or apply the parking brake for manual transmission), then press ENGINE START/STOP. If you press the button and the shift lever is not in Park (P), the vehicle goes into Accessory mode.

Shifting

Change the shift position based on your driving needs.

■ Continuously Variable Transmission (CVT)*

Park (P): Used for parking or starting/stopping the engine. Press the brake pedal, then press the release button to shift.

Reverse (R): Used for reversing.

Neutral (N): Used for idling.

Drive (D): Used for normal driving.

Drive (S): Used for better acceleration, increased engine braking, driving in hilly terrain, or when using paddle shifters*.

Low (L)*: Used for stronger engine braking when driving in hilly terrain.



Release button

NOTICE

When you change the shift lever from D to R and vice versa, come to a complete stop and keep the brake pedal pressed. Operating the shift lever before the vehicle has come to a complete standstill can damage the transmission.

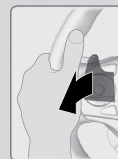
Do not operate the shift lever while pressing the accelerator pedal. You could damage the transmission.

*if equipped

■ Paddle Shifters*

Use the paddle shifters to change gears from 1st through 7th without removing your hands from the steering wheel.

(-) paddle shifter:
Pull to shift down
to a lower gear.

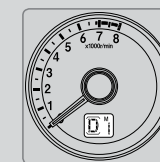
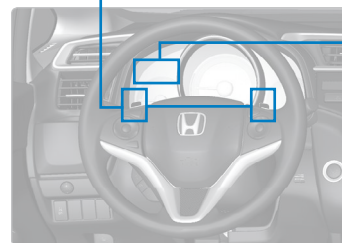


(+) paddle shifter:
Pull to shift up to
a higher gear.



Recommended shift points

Shift up	Normal acceleration
1 to 2	15 mph (24 km/h)
2 to 3	25 mph (40 km/h)
3 to 4	40 mph (64 km/h)
4 to 5	45 mph (72 km/h)
5 to 6	50 mph (80 km/h)
6 to 7	55 mph (89 km/h)



M indicator/gear position indicator

When the shift lever is in D: The vehicle goes into manual shift mode temporarily, and the gear number appears. When you start traveling at a constant speed, manual shift mode automatically switches off, and the gear number goes off.

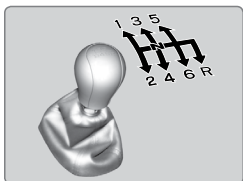
When the shift lever is in S: The vehicle goes into manual shift mode, and the M indicator and gear number appear. When the vehicle comes to a stop, it automatically shifts down into 1st gear. You can pull away only in 1st gear. If the vehicle speed increases and the engine speed approaches the tachometer's red zone, the transmission automatically shifts up. As the vehicle speed slows down, the transmission automatically shifts down accordingly.

To cancel manual shift mode, move the shift lever from S to D. The M indicator and gear number go off.

*if equipped

Manual Transmission*

Fully press the clutch pedal to operate the shift lever and change gears.



Recommended shift points

Shift up	Normal acceleration
1st to 2nd	16 mph (25 km/h)
2nd to 3rd	26 mph (42 km/h)
3rd to 4th	35 mph (56 km/h)
4th to 5th	41 mph (66 km/h)
5th to 6th	43 mph (69 km/h)

NOTICE

Do not shift to Reverse (R) before the vehicle comes to a complete stop. This can damage the transmission.

NOTICE

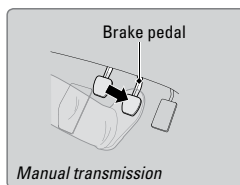
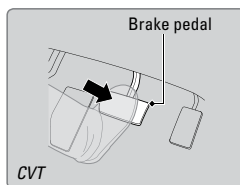
Before downshifting, make sure the engine will not go into the tachometer's red zone. This can severely damage your engine.

Braking

Slow down or stop your vehicle, and keep it from moving when parked.

Foot Brake

Press the brake pedal to slow down or stop your vehicle from moving.

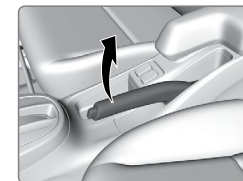


*if equipped

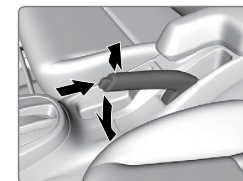
Parking Brake

Keep your vehicle from moving while parked.

To apply: Fully pull up the lever without pressing the release button.



To release: Pull up the lever slightly, and press and hold the release button. Lower the lever down all the way, then release the button.



NOTICE

Release the parking brake fully before driving. The rear brakes and axle can be damaged if you drive with the parking brake applied.

Brake Assist System

During hard or emergency braking, the system increases braking force. The brake pedal may move slightly or make a noise; this is normal. Continue to hold the brake pedal firmly down.

Anti-Lock Brake System (ABS)

During hard or emergency braking, the system rapidly pumps the brakes to prevent wheel lockup and help you maintain steering control. The brake pedal may pulsate slightly during ABS operation; this is normal. Do not pump the brake pedal, and continue to hold it firmly down.

NOTICE

The ABS may not function correctly if you use an incorrect tire type and size.

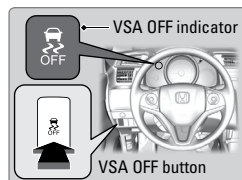
Vehicle Stability Assist (VSA®), aka Electronic Stability Control (ESC) System

Helps to stabilize the vehicle during cornering if the vehicle turns more or less than what was intended. It assists in maintaining traction on slippery surfaces by regulating engine output and selectively applying the brakes.

■ Turning VSA On or Off

VSA is turned on every time you start the engine, even if you previously turned it off. If you turn VSA off, your vehicle has normal braking and cornering ability, but VSA traction and stability enhancement become less effective.

Press and hold the VSA OFF button until you hear a beep to turn VSA on or off. The VSA OFF indicator appears when the system is off.

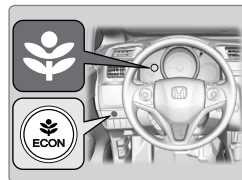


When VSA is turned off, traction control stops functioning, which may make it easier when trying to free your vehicle if it is stuck in mud or snow.

ECON Button*

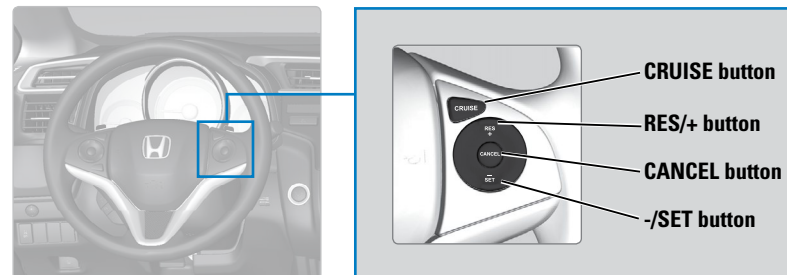
Can help improve your fuel economy by adjusting the performance of the engine, transmission, climate control system, and cruise control.

Press the ECON button to turn the system on or off. The ECON Mode indicator appears when the system is turned on.



Cruise Control

Maintain a constant vehicle speed without having to keep your foot on the accelerator pedal. Use cruise control on freeways or open roads where you can travel at a constant speed with little acceleration or deceleration.



■ Activating and Setting the Vehicle Speed

1. Press CRUISE. The CRUISE MAIN indicator appears.
2. Accelerate to the desired speed (above 25 mph/40 km/h). Take your foot off the pedal and press -/SET to set the speed. The CRUISE CONTROL indicator appears.



■ Adjusting the Vehicle Speed

Press RES/+ to increase or -/SET to decrease.

Each time you press the button, the vehicle speed is increased or decreased by about 1 mph (1.6 km/h). If you keep the button pressed, the vehicle speed increases or decreases until you release it.



■ Canceling Cruise Control

Press CANCEL or the brake pedal. The CRUISE CONTROL indicator goes off.

After cruise control has been canceled, you can still resume the prior set speed by pressing RES/+ while driving at a speed of at least 25 mph (40 km/h).

Press CRUISE to turn the system off.



⚠ WARNING

Improper use of the cruise control can lead to a crash.

Use cruise control only when traveling on open highways in good weather.

LaneWatch™*

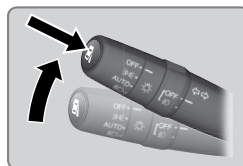
Check the passenger-side rear areas in the upper display when the right turn signal is activated.



■ Activating LaneWatch

Activate the right turn signal. The LaneWatch display appears. Check the display for blind spots, and visually confirm that it is safe to change lanes.

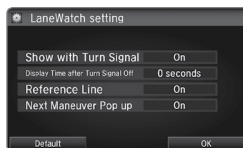
You can also press the LaneWatch button on the end of the turn signal switch to view a constant real-time display. Press it again to turn the display off.



■ Changing Settings

Customize the display and how and when the display appears.

1. From the HOME screen, select Settings.
2. Select Camera.
3. Select LaneWatch.
4. Select an option and make the preferred changes.
5. Press BACK to exit the menu.



Important Safety Reminder

Like all assistance systems, LaneWatch has limitations. Over-reliance on the system may result in a collision.

⚠ WARNING

Failure to visually confirm that it is safe to change lanes before doing so may result in a crash and serious injury or death.

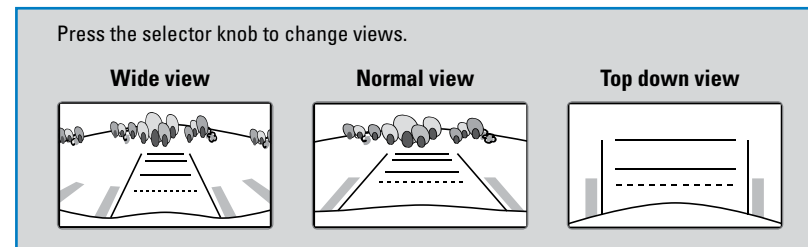
Do not rely only on LaneWatch while driving. Always look in your mirrors, to either side of your vehicle, and behind you for other vehicles before changing lanes.

*if equipped

Multi-View Rear Camera*

When you shift into Reverse (R), a real-time image of the area behind your vehicle is shown in the display, along with helpful parking guidelines.

Models with color audio system



■ Changing Camera Settings

Turn the guidelines on or off. Use the selector knob to make and enter selections.

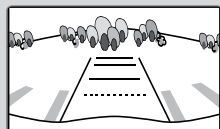
1. Press the MENU/CLOCK button.
2. Select Settings.
3. Select Rear Camera.
4. Select Camera Guideline.
5. Select On or Off.
6. Press the Back button to exit the menu.

*if equipped

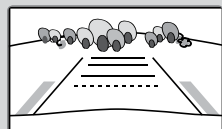
Models with touchscreen

Press the icons on the touchscreen to change views.

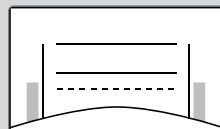
Wide view



Normal view



Top down view



■ Changing Camera Settings

Turn the guidelines on or off.

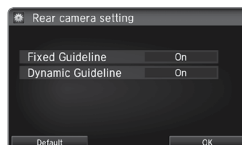
1. From the HOME screen, select Settings.
2. Select Camera.
3. Select Rear Wide Camera.

4. Select one of the options.

Fixed Guideline: Guidelines appear when you shift into Reverse. Select On or Off.

Dynamic Guideline: Guidelines move as you turn the steering wheel. Select On or Off.

5. Press BACK to exit the menu.



The rear camera view is restricted. You cannot see the corner ends of the bumper or what is underneath the bumper. Its unique lens also makes objects appear closer or farther than they actually are.

Visually confirm that it is safe to drive before backing up. Certain conditions (such as weather, lighting, and high temperatures) may also restrict the rear view. Do not rely on the rearview display, which does not give you all information about conditions at the rear of your vehicle.

Refueling

Use the proper fuel and refueling procedure to ensure the best performance and safety of your vehicle.

■ Fuel Information

Use of unleaded gasoline of 87 octane or higher is recommended.

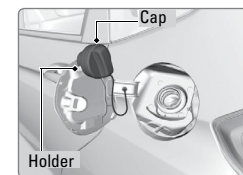
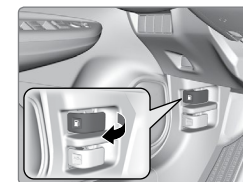
- Honda recommends TOP TIER Detergent Gasoline where available.
- Do NOT use gasoline containing more than 15% ethanol.
- Do NOT use gasoline containing methanol.
- Do NOT use gasoline containing MMT.

NOTICE

We recommend quality gasoline containing detergent additives that help prevent fuel system and engine deposits. In addition, in order to maintain good performance, fuel economy, and emissions control, we strongly recommend the use of gasoline that does NOT contain harmful manganese-based fuel additives such as MMT, if such gasoline is available.

■ How to Refuel

1. The fuel fill door is located at the left rear of the vehicle. Park next to the service pump that is most accessible.
2. Turn off the engine.
3. Pull the fuel fill door release handle under the lower left corner of the dashboard. The fuel fill door opens.
4. Turn the fuel fill cap slowly to open. Place the fuel fill cap in the holder.
5. Insert the filler nozzle fully. When the tank is full, the fuel nozzle clicks off automatically.
6. Replace the fuel fill cap. Tighten it until you hear at least one click. Close the fuel fill door.



⚠ WARNING

Gasoline is highly flammable and explosive. You can be burned or seriously injured when handling fuel.

- Stop the engine, and keep heat, sparks, and flame away.
- Handle fuel only outdoors.
- Wipe up spills immediately.

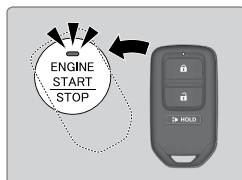
HANDLING THE UNEXPECTED

Learn about what to do in critical or emergency situations.

Smart Entry Remote Battery Strength*

If the battery life in your remote transmitter is weak, follow the below steps to start the engine.

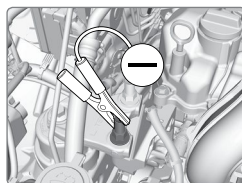
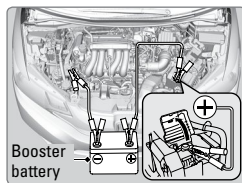
1. Touch the back of the remote transmitter to the ENGINE START/STOP button while the indicator is flashing.
2. With the brake pedal pressed (and the clutch pedal for manual transmission), press the ENGINE START/STOP button within 10 seconds.



Jump Starting

Turn off the power to electric devices, such as audio and lights. Turn off the engine, then open the hood.

1. Remove the under-hood fuse box cover (see page 108). Connect the first jumper cable to your vehicle's battery (+) terminal.
2. Connect the other end of the first jumper cable to the booster battery (+) terminal. Use a 12-volt booster battery only.
3. Connect the second jumper cable to the booster battery (-) terminal.
4. Connect the other end of the second jumper cable to the stud bolt as shown. Do not connect this jumper cable to any other part.
5. If your vehicle is connected to another vehicle, start the assisting vehicle's engine and increase its rpm slightly.
6. Attempt to start your vehicle's engine. If it turns over slowly, make sure that the jumper cables have good metal-to-metal contact.



⚠ WARNING

A battery can explode if you do not follow the correct procedure, seriously injuring anyone nearby.

Keep all sparks, open flames, and smoking materials away from the battery.

*if equipped

WARNING: Battery posts, terminals, and related accessories contain lead and lead compounds. **Wash your hands after handling.**

■ After the Engine Starts

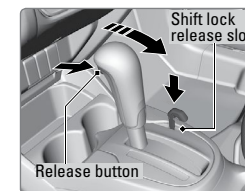
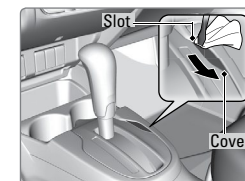
Once your vehicle's engine has started, remove the jumper cables in the following order:

1. Disconnect the jumper cable from your vehicle's stud bolt.
2. Disconnect the other end of the jumper cable from the booster battery (-) terminal.
3. Disconnect the jumper cable from your vehicle's battery (+) terminal.
4. Disconnect the other end of the jumper cable from the booster battery (+) terminal.
5. Have your vehicle inspected by a nearby service station or a dealer.

Shift Lever Does Not Move*

Follow the procedure below if you cannot move the shift lever out of Park (P).

1. Set the parking brake.
2. Remove the key from the ignition, or remove the built-in key from the remote transmitter.
3. Wrap a cloth around the tip of a small flat-tip screwdriver. Put it into the shift lock release slot as shown in the image, and remove the cover.
4. Insert the key into the shift release lock.
5. While pushing the key down, press the shift lever release button and place the shift lever into Neutral (N). The lock is now released. Have the shift lever checked by a dealer as soon as possible.

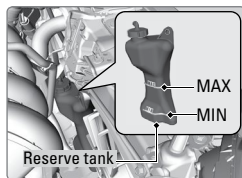


*if equipped

Overheating

If the high temperature indicator comes on, the engine suddenly loses power, or steam or spray comes out from under the hood, your engine is overheating.

1. Immediately park the vehicle in a safe place. Turn off all accessories and turn on the hazard warning lights.
2. *If steam or spray is not present:* Keep the engine running and open the hood.



If steam or spray is present: Turn off the engine and wait until it subsides. Then, open the hood.

3. Check that the cooling fan is operating and stop the engine once the high temperature indicator goes off. If the cooling fan is not operating, immediately stop the engine.
4. Once the engine has cooled down, inspect the coolant level and check the cooling system components for leaks. If the coolant level in the reserve tank is low, add coolant until it reaches the MAX mark. If there is no coolant in the reserve tank, make sure the radiator is cool, then cover the radiator cap with a heavy cloth and open the cap. If necessary, add coolant up to the base of the filler neck, and put the cap back on.

Once the engine has cooled sufficiently, restart it and check the high temperature indicator. If the indicator is off, resume driving. If it stays on, contact a dealer for repairs.

⚠ WARNING

Steam and spray from an overheated engine can seriously scald you.
Do not open the hood if steam is coming out.

⚠ WARNING

Removing the radiator cap while the engine is hot can cause the coolant to spray out, seriously scalding you.
Always let the engine and radiator cool down before removing the radiator cap.

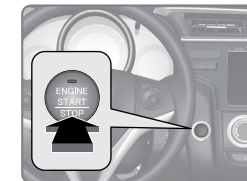
NOTICE

Continuing to drive with the temperature gauge needle at the H mark may damage the engine.

Emergency Engine Stop*

The ENGINE START/STOP button may be used to stop the engine due to an emergency situation even while driving. If you must stop the engine, choose one of the following operations:

- Press and hold the ENGINE START/STOP button for two seconds, or
- Firmly press the ENGINE START/STOP button two times.



The steering wheel will not lock. The power mode changes to ACCESSORY (or OFF for manual transmission), unless the shift lever is in Park (P), in which case the power mode changes to VEHICLE OFF.

Because turning off the engine also disables the power assist the engine provides to the steering and braking systems, it will require significantly more physical effort and time to steer and slow the vehicle. Downshift gears and use both feet on the brake pedal, if necessary, to slow the vehicle and stop immediately in a safe place.

Do not press the button while driving unless it is absolutely necessary for the engine to be switched off.

Emergency Towing

Call a professional towing service if you need to tow your vehicle.

Flat bed equipment: The operator loads your vehicle on the back of a truck. **This is the best way to transport your vehicle.**

Wheel lift equipment: The tow truck uses two pivoting arms that go under the front tires and lift them off the ground. The rear tires remain on the ground. **This is an acceptable way to tow your vehicle.**

NOTICE

Trying to lift or tow your vehicle by the bumpers will cause serious damage. The bumpers are not designed to support the vehicle's weight.

Improper towing such as towing behind a motorhome or other motor vehicle can damage the transmission.

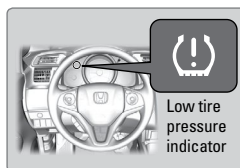
*if equipped

Tire Pressure Monitoring System (TPMS)

Monitors the tire pressure while you are driving. **Available on U.S. models only.**

If your vehicle's tire pressure becomes significantly low, the low tire pressure indicator comes on.

Stop your vehicle in a safe place. Check the tire pressure and adjust the pressure to the specified level. The specified tire pressure is on a label on the driver's doorjamb.

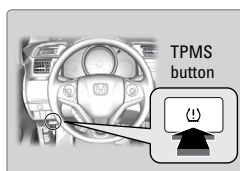


TPMS Calibration

Any time you inflate, change, or rotate one of more of the tires, you need to recalibrate the system.

Press and hold the TPMS button. The TPMS indicator blinks, and calibration begins.

The calibration process requires approximately 30 minutes of cumulative driving at speeds between 30–60 mph (48–97 km/h). The process finishes automatically.



NOTICE

Driving on an extremely underinflated tire can cause it to overheat. An overheated tire can fail. Always inflate your tires to the specified pressure.

TPMS—Required Federal Explanation

U.S. models only

Each tire, including the spare (if provided), should be checked monthly when cold and inflated to the inflation pressure recommended by the vehicle manufacturer on the vehicle placard or tire inflation pressure label.

(If your vehicle has tires of a different size than the size indicated on the vehicle placard or tire inflation pressure label, you should determine the proper tire inflation pressure for those tires.)

As an added safety feature, your vehicle has been equipped with a tire pressure monitoring system (TPMS) that illuminates a low tire pressure telltale when one or more of your tires is significantly under-inflated.



Accordingly, when the low tire pressure telltale illuminates, you should stop and check your tires as soon as possible, and inflate them to the proper pressure.

Driving on a significantly under-inflated tire causes the tire to overheat and can lead to tire failure. Under-inflation also reduces fuel efficiency and tire tread life, and may affect the vehicle's handling and stopping ability.

Please note that the TPMS is not a substitute for proper tire maintenance, and it is the driver's responsibility to maintain correct tire pressure, even if under-inflation has not reached the level to trigger illumination of the TPMS low tire pressure telltale.

Your vehicle has also been equipped with a TPMS malfunction indicator to indicate when the system is not operating properly. The TPMS malfunction indicator is combined with the low tire pressure telltale. When the system detects a malfunction, the telltale will flash for approximately one minute and then remain continuously illuminated. This sequence will continue upon subsequent vehicle start-ups as long as the malfunction exists.

When the malfunction indicator is illuminated, the system may not be able to detect or signal low tire pressure as intended.

TPMS malfunctions may occur for a variety of reasons, including the installation of replacement or alternate tires or wheels on the vehicle that prevent the TPMS from functioning properly.

Always check the TPMS malfunction telltale after replacing one or more tires or wheels on your vehicle to ensure that the replacement or alternate tires and wheels allow the TPMS to continue to function properly.

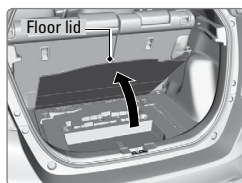
Changing a Flat Tire

If a tire goes flat while driving, grasp the steering wheel firmly, and brake gradually to reduce speed. Then, stop in a safe place. Replace the flat tire with the compact spare tire. Go to a dealer as soon as possible to have the full-size tire repaired or replaced.

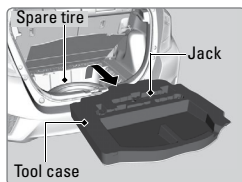
■ Getting Ready to Change the Tire

Park the vehicle on a firm, level, non-slippery surface. Apply the parking brake, shift to Park (P), and turn the vehicle off. Turn on the hazard warning lights.

1. Open the cargo area floor lid.

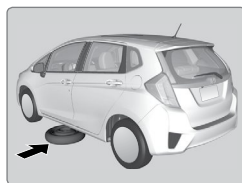


2. Take the tool case out of the cargo area. Take out the wheel nut wrench, jack handle bar, and jack.

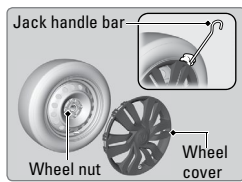


3. Unscrew the wing bolt and remove the spacer cone. Then remove the spare tire.

4. Place a wheel block or rock in front and rear of the wheel diagonal to the flat tire.



5. Place the compact spare tire (wheel side up) under the vehicle body, near the tire that needs to be replaced.



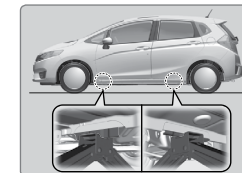
6. If necessary, put the flat tip of the jack handle bar into the edge of the wheel cover. Carefully pry the edge and remove the cover.

7. Loosen each wheel nut about one turn using the wheel nut wrench.

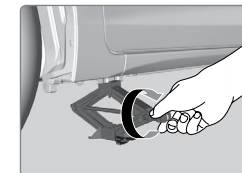


■ Setting Up the Jack

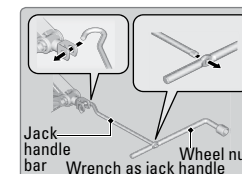
1. Place the jack under the jacking point closest to the tire to be changed.



2. Turn the end bracket (as shown in the image) until the top of the jack contacts the jacking point. Make sure that the jacking point tab is resting in the jack notch.



3. Raise the vehicle, using the jack handle bar and the jack handle, until the tire is off the ground.



⚠ WARNING

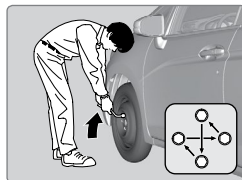
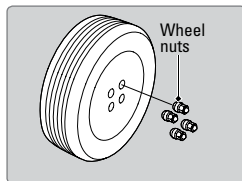
The vehicle can easily roll off the jack, seriously injuring anyone underneath. Follow the directions for changing a tire exactly, and never get under the vehicle when it is supported only by the jack.

The following instructions must be followed to use the jack safely:

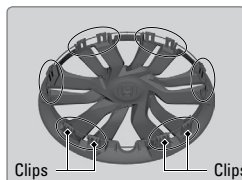
- Do not use the jack with people or luggage in the vehicle.
- Use the jack provided in your vehicle. Other jacks may not support the weight ("load") or fit the jacking point.
- Do not use while the engine is running.
- Use only where the ground is firm and level.
- Use only at the jacking points.
- Do not get in the vehicle while using the jack.
- Do not put anything on top of or underneath the jack.

■ Replacing the Flat Tire

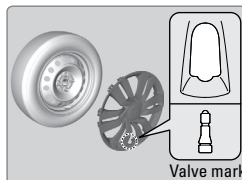
1. Remove the wheel nuts and flat tire.
2. Mount the compact spare tire. Replace the wheel nuts, and lightly tighten them.
3. Lower the vehicle and remove the jack. Tighten the wheel nuts in the order indicated in the image. Go around, tightening the nuts, two to three times in this order. Do not overtighten the wheel nuts.



Models with wheel covers: Make sure the wire support ring is hooked into the clips around the edge of the wheel cover.



Align the valve mark on the wheel cover to the tire valve on the wheel, then install the wheel cover.

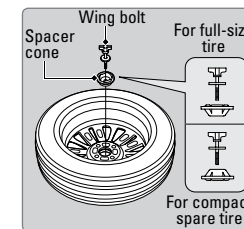


If you drive with the spare tire installed, the low tire pressure/TPMS indicator* appears. The indicator stays on until a regular tire is installed.

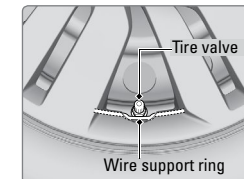
*if equipped

■ Storing the Flat Tire

1. Remove the center cap, if necessary.
2. Place the flat tire face down in the spare tire well.
3. Remove the spacer cone from the wing bolt, flip it over, and insert it back on the bolt. Secure the flat tire with the wing bolt.



Models with wheel covers: Make sure the wire support ring is on the outer side of the tire valve as shown.



4. Securely store the wheel nut wrench, jack handle bar, and jack back in the tool case. Store the case in the cargo area under the cargo floor lid.

⚠ WARNING

Loose items can fly around the interior in a crash and can seriously injure the occupants.

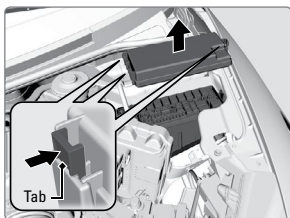
Store the wheel, jack, and tools securely before driving.

Fuse Locations

If any electrical devices are not working, turn the vehicle off and check to see if any applicable fuse is blown. Fuse locations are shown on the fuse box cover. Locate the fuse in question by the fuse number and box cover number.

Engine Compartment Fuse Box

Located under the hood near the brake fluid reservoir. Push the tabs to open the box.



Circuit Protected	Amps
1 Headlight Low Beam Main	20 A
2 CDC*	(30 A)
3 Hazard	10 A
4 DBW	15 A
5 Wiper	(30 A)
6 Stop	10 A
7 IGP	15 A
8 IG Coil	15 A
9 ECP*	(10 A)
10 INJ	(20 A)
11	–
12 Main Fan	30 A

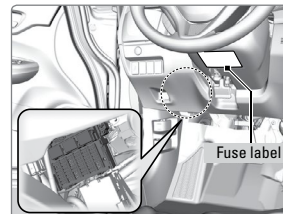
Circuit Protected	Amps
13 Starter SW	(30 A)
14 MG Clutch	7.5 A
15 Battery Sensor	(7.5 A)
16	–
17 Daytime Running Lights	(7.5 A)
18 Horn	10 A
19 Fog Light*	(15 A)
20	–
21 Back Up Main	15 A
22 Interior Lights	7.5 A
23 Sub Fan	(30 A)
24	–
25 Smart Entry Auto Start*	(7.5 A)
26 ST MG	(7.5 A)
27	–
28	–
29 Back Up	(10 A)
30 IGP LAF	(10 A)
31 IGPS	(7.5 A)
32 Right Headlight Low Beam	10 A
33 Left Headlight Low Beam	10 A

*if equipped

Interior Fuse Boxes

Fuse box A

Located behind the dashboard next to the steering wheel.



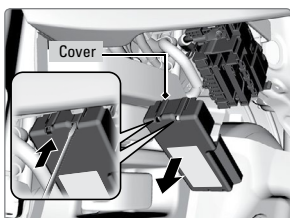
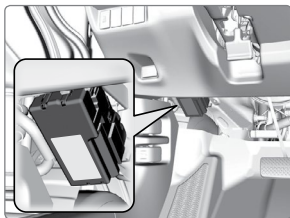
Circuit Protected	Amps
1 Door Lock	(20 A)
2	–
3 Smart*	(10 A)
4 Driver Side Door Unlock	15 A
5 Passenger Side Door Unlock	15 A
6 Driver Door Unlock	(10 A)
7 Driver Door Lock	(10 A)
8 Driver's Power Window	20 A
9 Passenger's Power Window	20 A
10 Rear Left Power Window	20 A
11 Rear Right Power Window	20 A
12 Driver Side Door Lock	15 A
13 Passenger Side Door Lock	15 A
14	–
15 Right Headlight High Beam	10 A
16 STS*	(7.5 A)

Circuit Protected	Amps
17 ACC Socket (Console*)	(20 A)
18 Moonroof*	(20 A)
19 Front Seat Heater*	(20 A)
20	–
21	–
22 Washer	15 A
23 Rear Wiper	(10 A)
24 A/C	7.5 A
25 Daytime Running Lights	7.5 A
26 Starter Cut	7.5 A
27 ABS/VSA	7.5 A
28 SRS	10 A
29 Left Headlight High Beam	10 A
30 ACG	10 A
31 Power Window	10 A
32 Fuel Pump	15 A
33 SRS	7.5 A
34 Meter	7.5 A
35 Mission SOL	7.5 A
36 Front ACC Socket	20 A
37 ACC	7.5 A
38 ACC Key Lock	7.5 A
39 Option	(10 A)
40 Rear Wiper	10 A
41	–
42	–

*if equipped

Fuse box B

Located behind the dashboard next to the steering wheel. Remove the cover by putting a flat-tip screwdriver into the side slot as shown.



	Circuit Protected	Amps
	EPS	70 A
	IG Main	30 A ^{*1}
1	Fuse Box Main 2	50 A ^{*2}
	ABS/VSA Motor	40 A
	Fuse Box Main 1	30 A
	Fuse Box Main 3	40 A
	—	—
2	—	—
	—	—
	—	—
	—	—
	—	—
3	Heater	30 A
4 ^{*1}	IG Main 2	30 A
4 ^{*2}	—	—
5	ABS/VSA FSR	30 A
6	Deicer	(10 A)
7	—	—
8	—	—
9	Small Light	10 A
10	ACC Socket (Console) *	(20 A)
11	Rear Defogger	30 A
12 ^{*1}	—	—
12 ^{*2}	ACC Key Lock	(7.5 A)
13	Heated Door Mirror *	(10 A)
14	A/C Blower SW	(7.5 A)
15 ^{*1}	—	—
15 ^{*2}	Wiper	30 A

*1: Models with smart entry system

*2: Models without smart entry system

**if equipped*

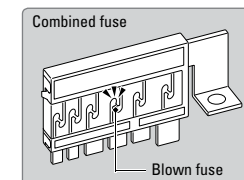
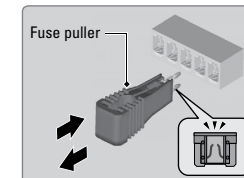
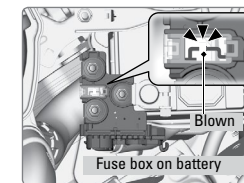
■ Inspecting and Changing Fuses

1. Turn the vehicle off, including all lights and accessories.
2. Check the fuses on the battery in the engine compartment. If the fuse is blown, have it replaced by a dealer.
3. Remove the fuse box cover.
4. Inspect the small fuses in the engine compartment and the vehicle interior.

If there is a burned-out fuse, remove it with the fuse puller and replace it with a new one.

5. Check the large fuse in the engine compartment.

If the fuse is blown, use a Phillips-head screwdriver to remove the screw and replace the fuse with a new one. Reinstall the screw.

**NOTICE**

Replacing a fuse with one that has a higher rating greatly increases the chances of damaging the electrical system.

MAINTENANCE

Learn about basic maintenance that you can perform on the vehicle yourself, as well as information about how to best maintain the vehicle.

Safety Precautions

Some of the most important safety precautions are listed below; however, we cannot warn you of every conceivable hazard that can arise in performing maintenance. Only you can decide whether or not you should perform a given task.

■ Maintenance Safety

- To reduce the possibility of fire or explosion, keep cigarettes, sparks, and flames away from the battery and all fuel-related parts.
- Never leave rags, towels, or other flammable objects under the hood.
- To clean parts, use a commercially available degreaser or parts cleaner, not gasoline.
- Wear eye protection and protective clothing when working with the battery or compressed air.
- Do not run the engine in confined spaces where carbon monoxide gas can accumulate.

■ Vehicle Safety

- The vehicle must be stationary, and parked on level ground with the parking brake set and the engine off.
- Be aware that hot parts can burn you.
- Be aware that moving parts can injure you.

⚠ WARNING

Improperly maintaining this vehicle or failing to correct a problem before driving can cause a crash in which you can be seriously hurt or killed. Always follow the inspection and maintenance recommendations according to the schedules in this guide.

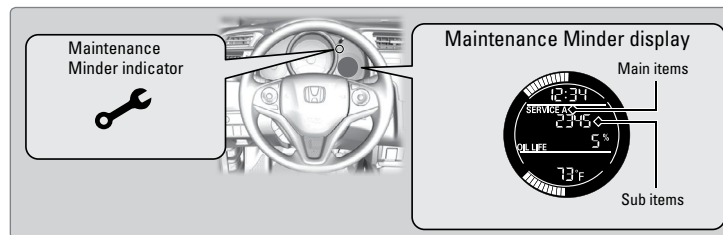
⚠ WARNING

Failure to properly follow maintenance instructions and precautions can cause you to be seriously hurt or killed. Always follow the procedures and precautions in this guide.

Maintenance Minder™

When maintenance is due, the Maintenance Minder indicator comes on and a message appears on the display every time you turn the vehicle on. Press the select/reset knob to change displays.

See the service code table on page 114 to check which items need maintenance based on the main and sub items shown in the display.



- Independent of the Maintenance Minder information, replace the brake fluid every 3 years.
- Inspect idle speed every 160,000 miles (256,000 km).
- Adjust the valves during services A, B, 1, 2, or 3 if they are noisy.

U.S. models

Maintenance, replacement, or repair of emissions control devices and systems may be done by any automotive repair establishment or individuals using parts that are certified to EPA standards.

According to state and federal regulations, failure to perform maintenance on the maintenance main items marked with # will not void your emissions warranties. However, all maintenance services should be performed in accordance with the intervals indicated by the multi-information display.

Maintenance Minder Service Codes

These codes indicate what services are due on your vehicle.

CODE	Maintenance Main Items
A	Replace engine oil *1
B	Replace engine oil and oil filter Inspect front and rear brakes/service as necessary Check parking brake adjustment Inspect tie rod ends, steering gearbox, and boots Inspect suspension components Inspect driveshaft boots Inspect brake hoses and lines (Including ABS/VSA) Inspect all fluid levels and condition of fluids Inspect exhaust system # Inspect fuel lines and connections #

*1: If a message SERVICE does not appear more than 12 months after the display is reset, change the engine oil every year.

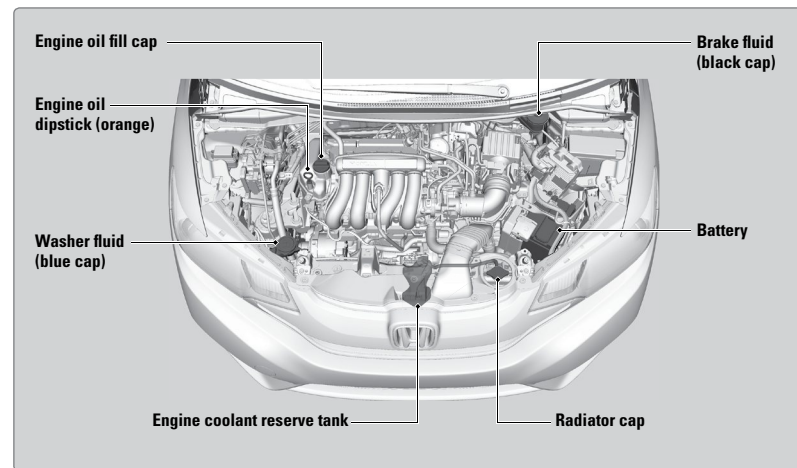
#: See information on maintenance and emissions warranty.

CODE	Maintenance Sub Items
1	Rotate tires
2	Replace air cleaner element *2 Replace dust and pollen filter *3 Inspect drive belt
3	Replace transmission fluid
4	Replace spark plugs Inspect valve clearance
5	Replace engine coolant

*2: If you drive in dusty conditions, replace the air cleaner element every 15,000 miles (24,000 km).

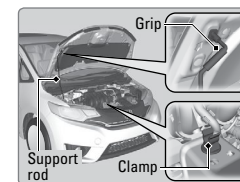
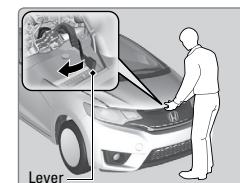
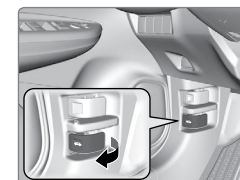
*3: If you drive primarily in urban areas with high concentrations of soot in the air from industry and diesel-powered vehicles, replace the dust and pollen filter every 15,000 miles (24,000 km).

Under the Hood



Opening the Hood

1. Park the vehicle on a level surface, and set the parking brake.
2. Pull the hood release handle under the lower left corner of the dashboard.
3. Push up the hood latch lever in the center of the hood to release the lock mechanism, and open the hood.
4. Remove the support rod from the clamp using the grip. Mount the support rod in the hood.



When closing, remove the support rod, and stow it in the clamp, then gently lower the hood. Remove your hand at a height of approximately 12 inches (30 cm) and let the hood close.

NOTICE

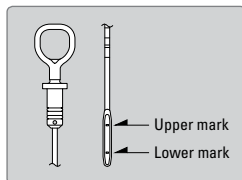
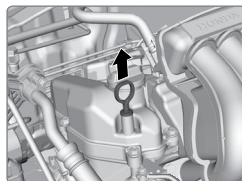
Do not open the hood when the wiper arms are raised. The hood will strike the wipers, and may damage either the hood or the wipers.

Engine Oil

Park the vehicle on level ground, and wait approximately three minutes after turning the engine off before you check the oil.

■ Checking the Oil

1. Remove the dipstick (orange).
2. Wipe the dipstick with a clean cloth or paper towel.
3. Insert the dipstick back all the way into its hole.
4. Remove the dipstick again, and check the level. It should be between the upper and lower marks. Add oil if necessary.



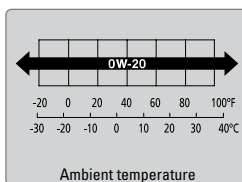
■ Recommended Engine Oil

- **Honda Genuine Motor Oil**
- **Premium-grade 0W-20 detergent oil with an API Certification Seal on the container**

This seal indicates the oil is energy conserving and that it meets the American Petroleum Institute's latest requirements.



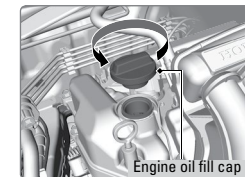
Use Honda Genuine Motor Oil or another commercial engine oil of suitable viscosity for the ambient temperature as shown.



You may also use synthetic motor oil if it is labeled with the API Certification Seal and is of the specified viscosity grade.

■ Adding Oil

1. Unscrew and remove the engine oil fill cap.
2. Add oil slowly.
3. Reinstall the engine oil fill cap, and tighten it securely.
4. Wait for three minutes and recheck the engine oil dipstick.



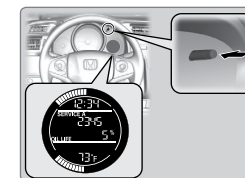
NOTICE

Do not fill the engine oil above the upper mark. Overfilling the engine oil can result in leaks and engine damage.

■ Resetting the Engine Oil Life

If you change or replace the vehicle's engine oil yourself, you must reset the engine oil life.

1. Press the select/reset knob until the oil life screen is displayed.
2. Press and hold the knob for 10 seconds, or until the maintenance codes and oil life blink.
3. Press and hold the knob for 5 seconds, or until the maintenance codes disappear and the engine oil life display returns to 100%.



NOTICE

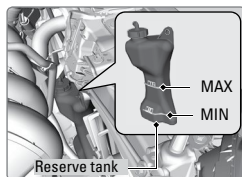
Failure to reset the engine oil life after a maintenance service results in the system showing incorrect maintenance intervals, which can lead to serious mechanical problems.

Engine Coolant

Park the vehicle on level ground. Check the reserve tank and the coolant level in the radiator. **We recommend Honda Long Life Antifreeze/Coolant Type 2.**

■ Checking the Reserve Tank

1. Check the amount of coolant in the reserve tank.
2. If the coolant level is below the MIN mark, add the specified coolant until it reaches the MAX mark.
3. Inspect the cooling system for leaks.

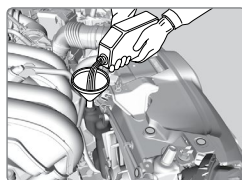
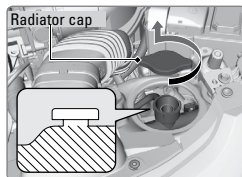


NOTICE

If Honda antifreeze/coolant is not available, you may use another major brand non-silicate coolant as a temporary replacement. Check that it is a high quality coolant recommended for aluminum engines. Continued use of any non-Honda coolant can result in corrosion, causing the cooling system to malfunction or fail. Have the cooling system flushed and refilled with Honda antifreeze/coolant as soon as possible.

■ Adding Coolant

1. Make sure the engine and radiator are cool.
2. Turn the radiator cap counterclockwise and relieve any pressure in the coolant system. Do not push the cap down when turning.
3. Push down and turn the radiator cap counterclockwise to remove it.
4. The coolant level should be up to the base of the filler neck. Add coolant if it is low.
5. Put the radiator cap back on, and tighten it fully.
6. Pour coolant into the reserve tank until it reaches the MAX mark. Put the cap back on the reserve tank.



⚠ WARNING

Removing the radiator cap while the engine is hot can cause the coolant to spray out, seriously scalding you.

Always let the engine and radiator cool down before removing the radiator cap.

NOTICE

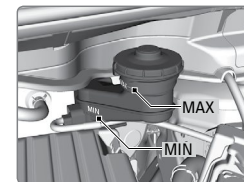
Pour the fluid slowly and carefully so you do not spill any. Clean up any spills immediately; they can damage components in the engine compartment.

Brake Fluid

The fluid level should be between the MIN and MAX marks on the side of the reservoir. **We recommend using Honda Heavy Duty Brake Fluid DOT 3.**

Pour the fluid carefully.

If the fluid level is at or below the MIN mark, have a dealer inspect for leaks or worn brake pads as soon as possible.

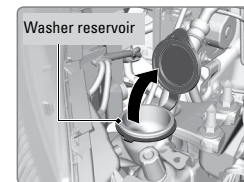


NOTICE

Brake fluid marked DOT 5 is not compatible with your vehicle's braking system and can cause extensive damage.

Window Washer Fluid

Check the amount of window washer fluid by looking at the reservoir. If the washer fluid level is low, fill the washer reservoir. Pour the washer fluid carefully. Do not overflow the reservoir.



Canadian models

If the washer fluid level is low, the washer level indicator appears (see page 27).

NOTICE

Do not use engine antifreeze or a vinegar/water solution in the windshield washer reservoir. Antifreeze can damage your vehicle's paint. A vinegar/water solution can damage the windshield washer pump.

Checking the Battery

The battery condition is monitored by a sensor on the negative terminal. If there is a problem with the battery, the charging system indicator appears (see page 24). Have your vehicle checked by a dealer.

Check the battery terminals for corrosion monthly.

For jump starting, see page 98.

⚠️ WARNING

The battery gives off explosive hydrogen gas during normal operation. A spark or flame can cause the battery to explode with enough force to kill or seriously hurt you. When conducting any battery maintenance, wear protective clothing and a face shield, or have a skilled technician do it.

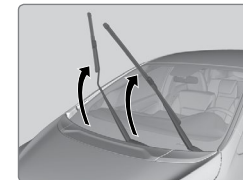
WARNING: Battery posts, terminals, and related accessories contain lead and lead compounds. **Wash your hands after handling.**

Changing Wiper Blades

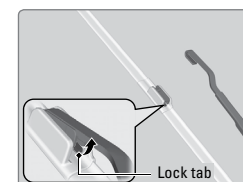
If the wiper blades leave streaks across the windshield, try cleaning them first with a paper towel or soft cloth and wiper fluid. If the wiper blade rubber has deteriorated, you should change the wiper blades.

■ Changing the Front Wiper Blade Rubber

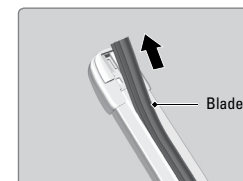
1. Lift the driver side wiper arm first, then the passenger side.



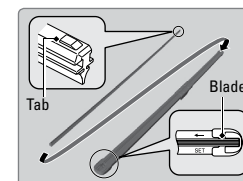
2. Press and hold the tab, then slide the blade from the wiper arm.



3. Slide the wiper blade out from its holder by pulling the tabbed end out.



4. Slide the new wiper blade onto the holder from the bottom end. The tab on the blade should fit in the indent of the top of the wiper holder.



5. Slide the wiper blade onto the wiper arm securely.

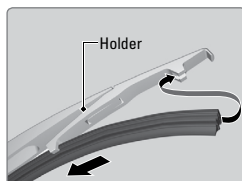
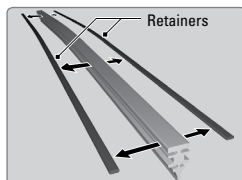
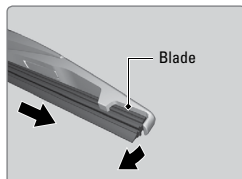
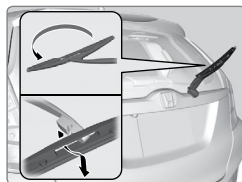
6. Lower the passenger side wiper arm first, then the driver side.

NOTICE

Avoid dropping the wiper arm, as it may damage the windshield.

■ Changing the Rear Wiper Blade Rubber

1. Lift the wiper arm off the window.
2. Pivot up the bottom end of the wiper blade until it comes off from the wiper arm.
3. Slide the wiper blade out from the end with the indent.
4. Remove the retainers from the rubber blade that has been removed, and mount to a new rubber blade.
5. Slide the new wiper blade onto the holder. Make sure it is engaged correctly, then install the wiper blade assembly onto the wiper arm.



Tire Information

To safely operate your vehicle, your tires must be of the proper type and size, in good condition with adequate tread, and properly inflated.

■ Inflation Guidelines

- Properly inflated tires provide the best combination of handling, tread life, and comfort. Refer to the driver's doorjamb label or the specifications (see page 130) for the specified pressure.
- Underinflated tires wear unevenly, adversely affect handling and fuel economy, and are more likely to fail from overheating.
- Overinflated tires make your vehicle ride harshly, are more prone to road hazards, and wear unevenly.
- Every day before you drive, look at each of the tires. If one looks lower than the others, check the pressure with a tire gauge.
- Measure the air pressure when tires are cold. This means the vehicle has been parked for at least 3 hours, or driven less than 1 mile (1.6 km). If necessary, add or release air until the specified pressure is reached, and then calibrate the system (see page 102). If checked when hot, tire pressure can be as much as 4–6 psi (30–40 kPa, 0.3–0.5 kgf/cm²) higher than checked when cold.
- At least once a month or before long trips, use a gauge to measure the pressure in all tires, including the spare. Even tires in good condition can lose 1–2 psi (10–20 kPa, 0.1–0.2 kgf/cm²) per month.

■ Inspection Guidelines

Every time you inflate the tires, check for the following:

- Any damage to tires, including bumps, bulges, cuts, splits, or cracks in the side or tread. Remove any foreign objects and inspect for air leaks. Replace tires if you see fabric or cord.
- Uneven or excessive tread wear. Have a dealer check the wheel alignment.
- Cracks or other damage around the valve stems.

■ Wear Indicators

The groove where the wear indicator is located is 1/16 inch (1.6 mm) shallower than elsewhere on the tire. If the tread has worn so low that the indicator is exposed, replace the tire. **Worn out tires have poor traction on wet roads.**

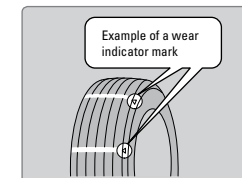


TABLE OF CONTENTS

VISUAL INDEX

SAFETY INFORMATION

INSTRUMENT PANEL

VEHICLE CONTROLS

AUDIO AND CONNECTIVITY

BLUETOOTH® HANDSFREELINK®

HONDALINK™

NAVIGATION

DRIVING

HANDLING THE UNEXPECTED

MAINTENANCE

SPECIFICATIONS

CUSTOMER INFORMATION

VOICE COMMAND INDEX

INDEX

⚠ WARNING

Using tires that are excessively worn or improperly inflated can cause a crash in which you can be seriously hurt or killed.

Follow all instructions in this owner's manual regarding tire inflation and maintenance.

Tire and Loading Information Label

The label attached to the driver's doorjamb provides necessary tire and loading information.

The diagram shows a rectangular label with a tire icon on the left. The label is divided into sections. At the top, it says 'TIRE AND LOADING INFORMATION'. Below that, it says 'SEATING CAPACITY TOTAL X FRONT X REAR X'. A note below that says 'The combined weight of occupants and cargo should never exceed XXXkg or XXXlbs.'. At the bottom, there is a table with columns for 'TIRE', 'SIZE', 'COLD TIRE PRESSURE', and 'SEE OWNER'S MANUAL FOR ADDITIONAL INFORMATION'. The table has rows for 'FRONT', 'REAR', and 'SPARE'. Callout lines point from the text labels to the corresponding parts of the label: 'Original tire sizes' points to the 'SIZE' column; 'Number of people your vehicle can carry' points to the 'SEATING CAPACITY' section; 'Proper cold tire pressure' points to the 'COLD TIRE PRESSURE' column; and 'Total weight your vehicle can carry (do not exceed)' points to the note about combined weight.

TIRE	SIZE	COLD TIRE PRESSURE	SEE OWNER'S MANUAL FOR ADDITIONAL INFORMATION
FRONT	XXXX/XXXXX XXX	XXXKPA, XXPSI	
REAR	XXXX/XXXXX XXX	XXXKPA, XXPSI	
SPARE	XXXX/XXXXX XXX	XXXKPA, XXPSI	

Tire and Wheel Replacement

Replace your tires with radials of the same size, load range, speed rating, and maximum cold tire pressure rating (as shown on the tire's sidewall). Using tires of a different size or construction can cause certain vehicle systems to work incorrectly. It is best to replace all four tires at the same time. If that isn't possible, replace the front or rear tires in pairs.

If you change or replace a wheel, make sure that the wheel's specifications match those of the original wheels.

⚠ WARNING

Installing improper tires on your vehicle can affect handling and stability.

This can cause a crash in which you can be seriously hurt or killed.

Always use the size and type of tires recommended in the Owner's Manual.

Tire Service Life

The life of your tires is dependent on many factors, including driving habits, road conditions, vehicle loading, inflation pressure, maintenance history, speed, and environmental conditions (even when the tires are not in use).

In addition to regular inspections and inflation pressure maintenance, it is recommended that you have annual inspections performed once the tires reach five years old. All tires, including the spare, should be removed from service after 10 years from the date of manufacture, regardless of their condition or state of wear.

Winter Tires

If driving on snowy or frozen roads, mount all season tires marked "M+S", snow tires, or tire chains; reduce speed; and maintain sufficient distance between vehicles when driving. For winter tires, select the size and load ranges that are the same as the original tires, and mount them to all four wheels.

Tire Chains

Install tire chains on the front tires only. Because your vehicle has limited tire clearance, we strongly recommend using the following chains: **Cable type: SCC Radial Chain SC1026.**

Mount chains as tightly as you can, and make sure that they do not touch the brake lines or suspension.

NOTICE

Traction devices that are the wrong size or improperly installed can damage your vehicle's brake lines, suspension, body, and wheels. Stop driving if they are hitting any part of the vehicle.

⚠ WARNING

Using the wrong chains, or not properly installing chains, can damage the brake lines and cause a crash in which you can be seriously injured or killed.

Follow all instructions in this guide regarding the selection and use of tire chains.

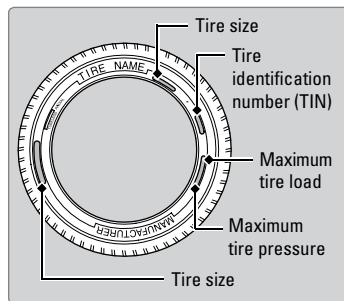
Tire Labeling

The tires that came on your vehicle have a number of markings. Those you should be aware of are described below.

Here is an example of what each marking means:

185/55R16 83V

- 185: tire width in millimeters
- 55: aspect ratio (tire section height as a percentage of its width)
- R: tire construction code (radial)
- 16: rim diameter in inches
- 83: load index (code indicating maximum load tire can carry)
- H: speed symbol (code indicating maximum speed rating)



■ Tire Identification Number (TIN)

The tire identification number (TIN) is a group of numbers and letters that look like the example below. TIN is located on the sidewall of the tire.

DOT B97R FW6X 2209
 DOT: This indicates that the tire meets all requirements of the U.S. Department of Transportation.
 B97R: Manufacturer's identification mark
 FW6X: Tire type code
 22 09: Date of Transportation
 Year
 Week

■ Glossary of Tire Terminology

Cold Tire Pressure – The tire air pressure when the vehicle has been parked for at least three hours or driven less than 1 mile (1.6 km).

Load Rating – The maximum load that a tire is rated to carry for a given inflation pressure.

Maximum Inflation Pressure – The maximum tire air pressure that the tire can hold.

Maximum Load Rating – The load rating for a tire at the maximum permissible inflation pressure for that tire.

Recommended Inflation Pressure – The cold tire inflation pressure recommended by the manufacturer.

Treadwear Indicators (TWI) – The projections within the principal grooves designed to give a visual indication of the degrees of wear of the tread.

DOT Tire Quality Grading

The tires on your vehicle meet all U.S. Federal Safety Requirements. All tires are also graded for treadwear, traction, and temperature performance according to Department of Transportation (DOT) standards. The following explains these gradings.

■ Uniform Tire Quality Grading

Quality grades can be found where applicable on the tire sidewall between tread shoulder and maximum section width.

For example:

Treadwear 200
Traction AA
Temperature A

All passenger car tires must conform to Federal Safety Requirements in addition to these grades.

■ Treadwear

The treadwear grade is a comparative rating based on the wear rate of the tire when tested under controlled conditions on a specified government test course. For example, a tire graded 150 would wear one and one-half (1 1/2) times as well on the government course as a tire graded 100. The relative performance of tires depends upon the actual conditions of their use, however, and may depart significantly from the norm due to variations in driving habits, service practices, and differences in road characteristics and climate.

■ Traction

The traction grades, from highest to lowest, are AA, A, B, and C. Those grades represent the tire's ability to stop on wet pavement as measured under controlled conditions on specified government test surfaces of asphalt and concrete. A tire marked C may have poor traction performance.

WARNING: The traction grade assigned to this tire is based on straight-ahead braking traction tests, and does not include acceleration, cornering, hydroplaning, or peak traction characteristics.

■ Temperature

The temperature grades are A (the highest), B, and C, representing the tire's resistance to the generation of heat and its ability to dissipate heat when tested under controlled conditions on a specified indoor laboratory test wheel. Sustained high temperature can cause the material of the tire to degenerate and reduce tire life, and excessive temperature can lead to sudden tire failure. The grade C corresponds to a level of performance which all passenger car tires must meet under the Federal Motor Vehicle Safety Standard No. 109. Grades B and A represent higher levels of performance on the laboratory test wheel than the minimum required by law.

WARNING: The temperature grade for this tire is established for a tire that is properly inflated and not overloaded. Excessive speed, underinflation, or excessive loading, either separately or in combination, can cause heat buildup and possible tire failure.

Testing of Readiness Codes

Your vehicle has "readiness codes" as part of the onboard self-diagnostic system. Some states refer to these codes as a test to see if your vehicle's emissions components are working properly. The codes may not be read if you go through the emissions testing just after the battery has gone dead or been disconnected.

To check if they are set, turn the vehicle on without starting the engine. The malfunction indicator lamp will come on for several seconds. If it goes off, the readiness codes are set. If it blinks five times, the readiness codes are not set.

If you are required to have your vehicle emissions tested before the readiness codes are set, prepare the vehicle for retesting by doing the following:

1. Fill the gas tank to approximately 3/4 full.
2. Park the vehicle and leave the engine off for 6 hours or more.
3. Make sure the ambient temperature is between 40°F and 95°F (4°C and 35°C).
4. Start the engine without touching the accelerator pedal, and let it idle for 20 seconds.
5. Keep the vehicle in Park (P) or Neutral (manual transmission). Increase the engine speed to 2,000 rpm, and hold it there for about 3 minutes.
6. Let the engine idle with your foot off the accelerator for 20 seconds.
7. Select a nearby, lightly traveled major highway where you can maintain a speed of 50 to 60 mph (80 to 97 km/h) for at least 20 minutes. Drive on the highway with the vehicle in Drive (D) or 5th gear (manual transmission). Do not use cruise control. When traffic allows, drive for 90 seconds without using the accelerator pedal. (Vehicle speed may vary slightly; this is OK.) If you cannot do this for a continuous 90 seconds because of traffic conditions, drive for at least 30 seconds, then repeat two more times (for a total of 90 seconds).
8. Drive in city/suburban traffic for at least 10 minutes. When traffic conditions allow, let the vehicle coast for several seconds without using the accelerator pedal or the brake pedal.
9. Park the vehicle and leave the engine off for 30 minutes.

The readiness codes are erased when the battery is disconnected, and set again only after several days of driving under a variety of conditions.

If an emissions testing facility determines that the readiness codes are not set, you may be requested to return at a later date to complete the test, or see your dealer.

SPECIFICATIONS

Vehicle

Model	Fit
No. of Passengers:	
Front	2
Rear	3
Total	5
Weights:	
Gross Vehicle Weight Rating ¹	U.S.: 3,362 lbs (1,525 kg) ¹⁴ 3,422 lbs (1,552 kg) ¹⁵ 3,437 lbs (1,559 kg) ¹⁶
	Canada: 1,517 kg ¹³ 1,524 kg ¹⁴ 1,555 kg ¹⁵ 1,563 kg ¹⁶
Gross Vehicle Weight Rating ²	U.S.: 3,383 lbs (1,539 kg) ¹⁴ 3,479 lbs (1,578 kg) ¹⁵ 3,491 lbs (1,583 kg) ¹⁶
	Canada: 1,537 kg ¹³ 1,543 kg ¹⁴ 1,577 kg ¹⁵ 1,583 kg ¹⁶
Gross Axle Weight Rating (Front) ¹	U.S.: 1,770 lbs (803 kg) ¹⁴ 1,796 lbs (814 kg) ¹⁵ 1,801 lbs (817 kg) ¹⁶
	Canada: 798 kg ¹³ 802 kg ¹⁴ 816 kg ¹⁵ 819 kg ¹⁶
Gross Axle Weight Rating (Rear) ¹	U.S.: 1,592 lbs (722 kg) ¹⁴ 1,626 lbs (738 kg) ¹⁵ 1,636 lbs (742 kg) ¹⁶
	Canada: 719 kg ¹³ 722 kg ¹⁴ 739 kg ¹⁵ 744 kg ¹⁶
Gross Axle Weight Rating (Front) ²	U.S.: 1,813 lbs (823 kg) ¹⁴ 1,854 lbs (841 kg) ¹⁵ 1,857 lbs (842 kg) ¹⁶
	Canada: 821 kg ¹³ 825 kg ¹⁴ 840 kg ¹⁵ 842 kg ¹⁶
Gross Axle Weight Rating (Rear) ²	U.S.: 1,579 lbs (715 kg) ¹⁴ 1,625 lbs (737 kg) ¹⁵ 1,634 lbs (741 kg) ¹⁶
	Canada: 716 kg ¹³ 718 kg ¹⁴ 737 kg ¹⁵ 741 kg ¹⁶
Air Conditioning:	
Refrigerant Type	HFC-134a (R-134a)
Charge Quantity	13.2 – 15.0 oz (375 – 425 g)
Lubricant Type	ND-OIL8

¹: Manual transmission models
²: Continuously variable transmission models
³: DX
⁴: LX
⁵: EX
⁶: EX-L

Engine and Fuel

Engine Specifications	
Displacement	91.4 cu-in (1,498 cm ³)
Spark Plugs	NGK DILZKAR7C11S DENSO DXE22HCR11S
Fuel	
Fuel Type	Unleaded gasoline, Pump octane number of 87 or higher
Fuel Tank Capacity	10.6 US gal (40 L)

Tires

Regular	Size	185/60R15 84T ¹ 185/55R16 83H ²
	Pressure (psi (kPa(kg/cm ²)))	Front 33 (230 (2.3)) ¹ Rear 32 (220 (2.2)) ²
Compact Spare	Size	T135/80D15 99M
	Pressure (psi (kPa(kg/cm ²)))	60 (420 (4.2))
Wheel Size	Regular	15 x 6J ¹
	Compact Spare	16 x 6J ² 15 x 4T

¹: LX, Canadian DX
²: EX, EX-L

Light Bulbs

Headlights (High/Low Beam)	60/55W (H4/HB2)
Fog Lights [*]	35W (H8 LL)
Side Marker Lights	30P
Front Turn Signal/Parking Lights	28/8W (Amber)
Brake/Tail/Side Marker Lights	LED
Back-Up Lights	21W
Rear Turn Signal Lights	21W
High-Mount Brake Light	LED
Side Turn Signal Lights	LED
Rear License Plate Lights	5W
Cargo Area Light	5W
Interior Lights	
Map Lights	8W
Ceiling Light	8W

^{*}if equipped

Fluids

Engine Oil	
Recommended	-Genuine Honda Motor Oil 0W-20 -API Premium-grade 0W-20 detergent oil
	Change 3.3 US qt (3.1 L)
Capacity	Change including filter 3.5 US qt (3.3 L)

Engine Coolant	
Specified Ratio	Honda Long-Life Antifreeze/Coolant Type2 50/50 with distilled water
Capacity	0.999 US gal (3.78 L) ¹ (change including the remaining 0.111 US gal (0.42 L) in the reserve tank)
	0.999 US gal (3.78 L) ² (change including the remaining 0.111 US gal (0.42 L) in the reserve tank)

¹: Continuously variable transmission models
²: Manual transmission models

Brake Fluid	
Specified	Honda Heavy Duty Brake Fluid DOT 3

Continuously Variable Transmission Fluid [*]	
Specified Capacity	Honda HCF-2 Transmission Fluid Change 3.6 US qt (3.4 L)

Manual Transmission Fluid [*]	
Specified Capacity	Honda Manual Transmission Fluid Change 1.5 US qt (1.4 L)

Washer Fluid	
Tank Capacity	U.S.: 2.6 US qt (2.5 L) Canada: 4.2 US qt (4.0 L)

^{*}if equipped

CUSTOMER INFORMATION

Learn about information specific to you as a Honda customer and how to get help.

Frequently Asked Questions/Troubleshooting

Below are some frequently asked questions and troubleshooting items that you may have about the vehicle.

Q: How do I set the vehicle clock?

A: For vehicles without navigation, see page 45. For vehicles with navigation, the time is automatically set using GPS signals.

Q: Why doesn't the vehicle start when I press the ENGINE START/STOP button?*

A: The brake pedal must be pressed to start the engine.

Q: What is the AUTO* setting on my headlight lever?

A: When in the AUTO position, the vehicle's exterior lights will automatically turn on or off depending on the ambient lighting.

Q: Why won't the driver's door unlock when I grab the door handle, even though the keyless access remote is within range?*

A: If you pull the handle too quickly, the system may not have time to confirm the door is unlocked. Wait to hear a beep to confirm the door is unlocked. If you are wearing gloves, the system may be slow to respond.

Q: After my battery was disconnected or went dead, the audio system is asking for a code. Where do I find this?

A: In most cases, you do not need to enter a code. Turn on the vehicle and the audio system, and press and hold the power button until the system reactivates.

Q: Why can't I operate Pandora® through the audio system?

A: Audio may be streaming through Bluetooth® Audio. Make sure Pandora mode is selected and the phone cable is properly connected to the USB adapter. Some phones may prompt you to "Allow" a connection.

Q: Is my phone compatible with Bluetooth features?

A: Visit handsfreelink.com (U.S.) or handsfreelink.ca (Canada) to check phone compatibility for Bluetooth® Audio, Bluetooth® HandsFreeLink®, and SMS text messaging.

Q: Every time I press the Talk button, the system gives me voice prompts. Can I turn these off?*

A: From the Home screen, select Settings. Select the Voice Recog tab, then select Voice Prompt. Select Off.

*if equipped

Q: Why can't I select an item using the selector knob or touchscreen*?

A: To prevent driver distraction, certain items are limited or inoperable while the vehicle is moving. Use voice commands or pull over to select the items.

Q: Where can I find the vehicle identification number (VIN)?

A: Check the label on the driver's doorjamb.

Contact Us

Honda dealer personnel are trained professionals. They should be able to answer all your questions. If you encounter a problem that your dealership does not solve to your satisfaction, please discuss it with the dealership's service manager or general manager. If you are dissatisfied with the decision made by the dealership's management, contact Honda Automobile Customer Service.

U.S. owners

American Honda Motor Co., Inc.
Honda Automobile Customer Service
1919 Torrance Blvd.
Mail Stop 500-2N-7A
Torrance, CA 90501-2746
Tel: (800) 999-1009

In Puerto Rico and the U.S. Virgin Islands

Bella International
P.O. Box 190816
San Juan, PR 00919-0816
Tel: (787) 620-7546

Canadian owners

Honda Canada, Inc.
Customer Relations
180 Honda Blvd.
Markham, ON
L6C 0H9
Tel: (888) 946-6329
Fax: (877) 939-0909
e-mail: honda_cr@ch.honda.com

When you call or write, please give us the following information:

- Vehicle Identification Number
- Date of purchase
- Odometer reading of your vehicle
- Your name, address, and telephone number
- A detailed description of the problem
- Name of the dealer who sold the vehicle to you

*if equipped

Honda Roadside Assistance

24-hour emergency road service is available to you in the United States and Canada throughout your 3-year/36,000-mile warranty term. Services include jump starting, flat tire and lockout assistance, towing, and more (limitations apply).

Call (866) 864-5211 (U.S.) or (800) 465-7587 (Canada).

Warranty Coverages

Below is a brief summary of the warranties covering your new vehicle.

New Vehicle Limited Warranty: Covers your new vehicle, except for the emissions control system and accessories, against defects in materials and workmanship.

Emissions Control Systems Defects Warranty and Emissions Performance Warranty: Covers your vehicle's emissions control systems. Time, mileage, and coverage are conditional.

Seat Belt Limited Warranty: Covers seat belts that fail to function properly.

Rust Perforation Limited Warranty: Covers all exterior body panels that rust through from the inside.

Accessory Limited Warranty: Covers Honda accessories.

Replacement Parts Limited Warranty: Covers all Honda replacement parts against defects in materials and workmanship.

Replacement Battery Limited Warranty: Provides prorated coverage for a replacement battery purchased from a Honda dealer.

Replacement Muffler Lifetime Limited Warranty: Covers a replacement muffler for the duration of the ownership.

Restrictions and exclusions apply to all these warranties. See the Warranty Manual on the Owner Information CD or at owners.honda.com (U.S.) or myhonda.ca (Canada) for complete descriptions of each warranty, including time, mileage, and other conditional limitations.

Your vehicle's original tires are covered by their manufacturer. Tire warranty information can be found on the Owner Information CD or at owners.honda.com (U.S.) or myhonda.ca (Canada).

VOICE COMMAND INDEX

Learn about all available voice commands to help you operate the vehicle. Available on vehicles with navigation.

Press the Talk button before you say a command. To view a list of available commands in the vehicle, say "Voice help." Select a category to hear the commands read aloud.

■ Global Commands

The system accepts these commands on any screen.

- Voice help
- Display menu
- Display setting
- Display navigation
- Display information
- Display audio
- Display phone
- Back/Cancel
- What is today's date?
- What time is it?

■ Navigation Commands

The system accepts these commands on the map/guidance screen.

General Commands

- Display map
- Display navigation
- Go home 1 (or 2)

Map Display Commands

- Display current location
- Display/Hide (specify icon type):
 - ATM
 - gas station
 - restaurant
 - post office
 - grocery store
 - lodging (hotel, motel)
 - parking garage
 - parking lot
 - school
 - hospital
 - freeway exit information
 - traffic*
 - traffic speeds*
 - traffic icons*
- Display north up
- Display heading up
- Display 3D map
- Display zoom in
- Display zoom out

*U.S. models only

■ **Navigation Commands (continued)**

Find Place Commands

- Find nearest (specify place):
 - Fuel and auto
 - Honda dealers
 - Gas station
 - Auto parts & electronics
 - Auto repair & maintenance
 - Car wash & detailing
 - Motorcycle dealers
 - Other car dealerships
 - Roadside assistance
 - ATM
 - Bank
 - Check cashing
 - Currency exchange
 - Community
 - Business
 - City hall
 - Civic center
 - Convention center
 - Court house
 - Higher education
 - Library
 - Post office
 - School
 - Emergency room
 - Hospital
 - Police station
 - Veterinarian
 - Lodging
 - Bed & breakfast
 - Hotel
 - Resort
 - Recreation
 - Amusement park
 - Golf course
 - Historical monument
 - Marina
 - Movie theater
 - Museum
 - Park
 - Performing arts
 - Sports complex
 - Tourist attraction
 - Restaurant
 - American restaurant
 - Californian restaurant
 - Chinese restaurant
 - Coffee shop
 - Continental restaurant
 - Fast food
 - French restaurant
 - German restaurant
 - Greek restaurant
 - Indian restaurant
 - Italian restaurant
 - Japanese restaurant
 - Korean restaurant
 - Mexican restaurant
 - Pizza
 - Seafood restaurant
 - Thai restaurant
 - Vegetarian restaurant
 - Vietnamese restaurant
 - Other restaurant
 - Shopping
 - Shopping area
 - Accessory store
 - Book store
 - Clothing store
 - Grocery store
 - Home improvement store
 - Mall
 - Office supply store
 - Pharmacy
 - Pet food store
 - Sewing store
 - Shoe store
 - Sporting goods store
 - Toy store

- Travel center
- Airport
- Automobile club
- Bus station
- Camping
- Commuter rail station
- Ferry terminal
- Named place
- Park & ride
- Parking garage
- Parking lot
- Rental car agency
- Rest area
- Ski area
- Tourist information
- Train station
- Travel agency
- Truck stop

Route Commands

The system accepts these commands when a route is set.

- How long to the destination?
- How far to the destination?
- Display destination map
- Display entire route
- Cancel route
- Repeat guidance
- Route menu

■ **Climate Control Commands****

The system accepts these commands on most screens. **Available on Canadian models only.**

- Climate control automatic (maintains selected temperature)
- Climate control on*
- Climate control off*
- Air conditioner on*
- Air conditioner off*
- Rear defrost on*
- Rear defrost off*
- Climate control fresh air
- Climate control recirculate
- Climate control vent
- Climate control bi-level (vent and floor)
- Climate control floor
- Climate control floor and defrost
- Fan speed up
- Fan speed down
- Fan speed # (#: 1 to 7)
- Temperature # degrees (#: 57 to 87°F / 15 to 29°C)
- Temperature up
- Temperature down
- Driver temperature up
- Driver temperature down
- Temperature max heat
- Temperature max cool

*These commands toggle the function on and off, so the command may not match your intended action.
**if equipped

■ Audio Commands

The system accepts these commands on most screens. Audio volume levels cannot be controlled using voice commands.

FM/AM Radio Commands

- Audio on*
- Audio off*
- Radio on*
- Radio off*
- Radio select FM
- Radio select AM
- Radio tune to # FM (#: frequency, e.g., 95.5)
- Radio tune to # AM (#: frequency, e.g., 1020)
- Radio seek up
- Radio seek down
- Radio next station
- Radio preset # (#: 1 to 12)
- Radio FM preset # (#: 1 to 12)
- Radio AM preset # (#: 1 to 6)
- Radio scan*

SiriusXM® Radio Commands

- Radio select XM
- XM channel # (#: 0 to 255)
- XM channel up
- XM channel down
- XM category up
- XM category down
- XM preset # (#: 1 to 12)
- XM scan*
- XM category scan*
- XM channel scan*
- XM category mode
- XM channel mode

Disc Commands

- Disc play
- Disc play track # (#: 1 to 30)
- Disc skip forward
- Disc skip back
- Disc track random*
- Disc track repeat*
- Disc track scan*
- Disc folder up
- Disc folder down
- Disc folder random*
- Disc folder repeat*
- Disc folder scan*
- Disc normal play

Song By Voice™ Commands

Available for iPod and USB music search.

- Music search
- What am I listening to?
- Who am I listening to?
- Who is this?
- Who's playing?
- What's playing?
- What album is this?
- Play artist (name)
- Play track/song (name)
- Play album (name)
- Play genre/category (name)
- Play playlist (name)
- Play composer (name)
- List artist (name)
- List album (name)
- List genre/category (name)
- List playlist (name)
- List composer (name)

*These commands toggle the function on and off, so the command may not match your intended action.

■ Audio Commands (continued)

USB Commands

- Music search
- USB play
- USB play track # (#: 1 to 30)
- USB skip forward
- USB skip back
- USB track random*
- USB track repeat*
- USB track scan*
- USB folder up
- USB folder down
- USB folder random*
- USB folder repeat*
- USB folder scan*
- USB normal play

iPod® Commands

- Music search
- iPod play
- iPod play track # (#: 1-30)
- iPod skip forward
- iPod skip back
- iPod track shuffle*
- iPod album shuffle*
- iPod track repeat*
- iPod normal play
- What/Who am I listening to?
- Who is this?
- What's playing?
- Who's playing?
- What album is this?

Pandora® Commands**

- Pandora play*
- Pandora skip forward
- Pandora station up
- Pandora station down
- Pandora pause*
- Pandora resume*
- Pandora like this song
- Pandora dislike this song

Bluetooth® Audio Commands

- Bluetooth audio play
- Bluetooth audio skip forward
- Bluetooth audio skip back
- Bluetooth audio pause
- Bluetooth audio resume
- Bluetooth audio group up
- Bluetooth audio group down

Commands may not work on some phones or devices.

AUX Commands

- Auxiliary play

*These commands toggle the function on and off, so the command may not match your intended action.

**U.S. models only

Phone Commands

The system accepts these commands on most screens.

- Dial/call by number
- Dial/call by name
- Call (phone number or name)

Info Commands

The system accepts these commands on most screens.

- Trip computer
- Display clock
- Display traffic list*
- Display wallpaper
- Display traffic on my route*

On-screen Commands

The system accepts these commands on any screen where applicable. All available commands are highlighted in yellow when you press the Talk button.

- Next (or previous)
- Up (or down)
- Right (or left)
- Return
- OK (excluding Startup Confirmation screen)
- Delete

**if equipped*

INDEX

ABS	25	Braking	90
Accessory Power Socket.....	47	Brightness Control.....	35
Airbags	9	Calibration.....	102
About Your Airbags.....	11	Carbon Monoxide Gas.....	4
Advanced Airbags.....	9	Changing a Flat Tire.....	104
Airbag Care.....	14	Changing Settings.....	46
Airbag System Components.....	13	Changing Wiper Blades.....	121
Airbag System Indicators.....	11	Charging system.....	24
Front Airbags (SRS).....	9	Child Safety.....	15
Passenger Airbag Off Indicator.....	12	Child Seat.....	17
Side Airbags.....	10	Adding Security with a Tether.....	20
Side Curtain Airbags.....	10	Installing a Child Seat.....	18
SRS indicator.....	11	Selecting a Child Seat.....	17
Air Conditioning System.....	43	Childproof Door Locks.....	31
Anti-Lock Brake System (ABS).....	25, 91	Climate Control Commands.....	137
Audio Commands.....	138	Climate Control System.....	44
Audio Operation.....	47	Clock.....	45
Accessory Power Socket.....	47	Color Audio System.....	50
Auxiliary Input Jack.....	48	Compact Disc (CD).....	52, 60
Bluetooth® Audio.....	55, 63	Compact Disc (CD) Commands.....	138
Color Audio System.....	50	Contact Us.....	133
Compact Disc (CD).....	52, 60	Continuously Variable Transmission (CVT) ..	88
FM/AM Radio.....	51, 58	Coolant.....	118
HDMI Port.....	47	Cruise Control.....	27, 93
HDMI Video.....	65	Customer Information.....	132
HondaLink™.....	57	Customized Features.....	46
iPod®.....	53, 61	Dashboard and Other Controls.....	2
Pandora®.....	64	Destination.....	79
SiriusXM® Radio.....	59	Detour.....	82
Sound.....	49	Dialing a Number.....	68, 72
Steering Wheel Controls.....	48	Door Mirrors.....	42
Touchscreen Operation.....	56	Doors.....	30, 31
USB Flash Drive.....	54, 62	Door/tailgate open.....	26
USB Port.....	47	DOT Tire Quality Grading.....	127
AUX Commands.....	139	Driving.....	83
Auxiliary Input Jack.....	48	Braking.....	90
Battery.....	120	Cruise Control.....	93
Bluetooth® Audio.....	55, 63	ECON button.....	92
Bluetooth® Audio Commands.....	139	Ignition.....	87
Bluetooth® HandsFreeLink® (HFL).....	66	LaneWatch™.....	94
E-Mail.....	74	Maximum Load Limit.....	85
HFL Controls.....	66, 69	Multi-View Rear Camera.....	95
HondaLink™ Assist.....	73	Paddle Shifters.....	89
Making a Call.....	68, 72	Power Mode.....	88
Pairing a Phone.....	67, 71	Refueling.....	97
Phonebook.....	68, 72	Shifting.....	88
Siri Eyes Free.....	75	Vehicle Stability Assist (VSA®).....	92
SMS Text Messaging.....	74	ECON button.....	92
Speed Dial.....	68, 73	ECON mode.....	27
Talk Button Tips.....	70	Electric power steering.....	25
Brake Assist System.....	91	Electronic Stability Control (ESC).....	92
Brake Fluid.....	119	E-Mail.....	74
Brake system.....	24, 25	Emergency Engine Stop.....	101

TABLE OF CONTENTS
VISUAL INDEX
SAFETY INFORMATION
INSTRUMENT PANEL
VEHICLE CONTROLS
AUDIO AND CONNECTIVITY
BLUETOOTH® HANDSFREELINK®
HONDALINK™

NAVIGATION
DRIVING
HANDLING THE UNEXPECTED
MAINTENANCE
SPECIFICATIONS
CUSTOMER INFORMATION
VOICE COMMAND INDEX
INDEX

Emergency Towing	101	Lock Tab	31
Engine and Fuel	130	Low fuel	26
Engine Coolant	118	Low oil pressure	24
Engine Oil	116	Low temperature	25
ENGINE START/STOP button	88	Low tire pressure	26
Exterior lights	27, 36	Maintenance	112
Fastening a Seat Belt	7	Battery	120
Find Nearest Place	80	Brake Fluid	119
Find Place Commands	136	Engine Coolant	118
Flat Tire	104	Engine Oil	116
Floor Mats	39	Maintenance Minder™	26, 113
Fluids	131	Safety Precautions	112
FM/AM Radio	51, 58	Service Codes	114
FM/AM Radio Commands	138	Under the Hood	115
Fog lights	27, 36	Window Washer Fluid	119
Foot Brake	90	Wiper Blades	121
Frequently Asked Questions	132	Making a Call	68, 72
Front Airbags (SRS)	9	Malfunction indicator lamp	25
Front Door Inner Handle	31	Manual Transmission	90
Front Seats	38	Map Display Commands	135
Front Wipers	37	Map Legend	81
Fuel Information	97	Map Lights	35
Fuse Locations	108	Master Door Lock Switch	31
Hang-Up/Back button	66, 69, 76	Maximum Load Limit	85
Hazards	27	Mirrors	42
HDMI Port	47	Moonroof	34
HDMI Video	65	Multi-View Rear Camera	95
Headlight-Wiper Integration	37	Navigation	76
Head Restraints	40	Detour	82
HFL Controls	66, 69	Display and Controls	77
High beams	27	Entering a Destination	79
High temperature	25	Find Nearest Place	80
Home Address	79	Home Address	79
HondaLink™	57	Map Legend	81
HondaLink™ Assist	73	Place Category	80
Honda Roadside Assistance	134	Routing	81
Hood	115	Steering Wheel Controls	76
Ignition	87	Street Address	79
Immobilizer	27	Talk Button Tips	78
Info Commands	140	Traffic	82
Information Display	28	Voice Prompt	78
Instrument Panel	24	Navigation Commands	135
Condition Indicators	26	One-Touch Turn Signal	36
Malfunction Indicators	24	On-screen Commands	140
On/Off Indicators	27	Opening the Hood	115
Interior Lights	35	Overheating	100
iPod®	53, 61	Paddle Shifters	89
iPod® Commands	139	Pairing a Phone	67, 71
Jump Starting	98	Pandora®	64
Key	29	Pandora® Commands	139
LaneWatch™	94	Parking brake	26, 91
Lap/Shoulder Seat Belts	5	Passenger Airbag Off Indicator	12
LATCH-Compatible Child Seat	18	Phone	67, 71
Light Bulbs	130	Phonebook	68, 72
Lights	35	PHONE button	66

Phone Commands	140	Specifications	130
Pick-Up button	66, 69	Speed Dial	68, 73
Place Category	80	Starter system	25
Power Door Mirrors	42	Steering Wheel	43
Power Mode	88	Steering Wheel and Nearby Controls	1
Power Moonroof	34	Steering Wheel Controls	48, 76
Power Windows	33	Street Address	79
Radio	51, 58	Supplemental Restraint System (SRS)	11, 24
Readiness Codes	129	Tailgate	30, 32
Rear Camera	95	Talk button	66, 69, 76
Rear Seats	41	Talk Button Tips	70, 78
Rearview Mirror	42	Text Messaging	74
Rear Wiper	37	Tire Information	123
Refueling	97	DOT Tire Quality Grading	127
Remote Battery Strength	98	Inflation Guidelines	123
Remote Transmitter	29	Tire and Loading Information Label	124
Reporting Safety Defects	23	Tire and Wheel Replacement	124
Roadside Assistance	134	Tire Chains	125
Route Commands	137	Tire Identification Number (TIN)	126
Routing	81	Tire Labeling	126
Safety Information	3	Tire Service Life	125
Carbon Monoxide Gas	4	Tire Terminology	126
Childproof Door Locks	31	Wear Indicators	123
Child Safety	15	Winter Tires	125
Reporting Safety Defects	23	Tire Pressure Monitoring System (TPMS)	25, 102
Safety Label Locations	22	Tires	130
Safety Messages	3	Touchscreen Operation	56
Seat Belts	5	Towing	101
Fastening a Seat Belt	7	Traffic	82
Lap/Shoulder Seat Belts	5	Troubleshooting	132
Seat Belt Inspection	6	Turn Signal	27, 36
Seat belt reminder	26	Under the Hood	115
Seat Belt with Detachable Anchor	8	USB Commands	139
Shoulder Anchor	7	USB Flash Drive	54, 62
Seat Heaters	44	USB Port	47
Seats	38	Vehicle	130
Front Seats	38	Vehicle Controls	29
Rear Seats	41	Vehicle Stability Assist (VSA®)	25, 27, 92
Selector knob	66	Visual Index	1
Select/reset knob	28	Voice Command Index	135
Service Codes	114	Voice Prompt	78
Settings	46	Warranty Coverages	134
Setting the Clock	45	Washer fluid level	26
Shifting	88	Wear Indicators	123
Shift Lever Does Not Move	99	Window Washer Fluid	119
Shoulder Anchor	7	Windows	33
Side Airbags	10	Winter Tires	125
Side Curtain Airbags	10	Wiper Blades	121
Siri Eyes Free	75	Wiper Operation	37
SiriusXM® Radio	59		
SiriusXM® Radio Commands	138		
Smart Entry system	25, 30		
SMS Text Messaging	74		
Song By Voice™ Commands	138		
Sound	49		