

2015 HYUNDAI
GENESIS COUPE



COMPARE SPORTS CARS BY FACTS AND FIGURES. CHOOSE ONE BY THE WAY IT FEELS.

We know what you're thinking. Is the lust-inducing design of Genesis Coupe backed by true sports car performance? There's only one way to find out – take your seat behind the wheel.

Buckle up, press the start button and blip the throttle. That throaty growl you hear is the tuned exhaust note of our 348-horsepower V6 powerplant. With every rev of the engine, Gasoline Direct Injection (GDI) technology spritzes fuel directly into the cylinder for potent, highly efficient combustion. Grab the shifter – whether it's our advanced 6-speed manual or 8-speed SHIFTRONIC® transmission, your right hand conducts a precision instrument.

Now prod the pedal under your right foot. As Genesis Coupe launches from a standstill, its rear-wheel drive chassis grips the pavement and presses you back into the firmly bolstered driver seat. Glance down at the tach needle climbing toward redline...grab another gear...and set up for the next moment of truth: A sweeping curve that's sure to test a sports car's composure. Fear not – Genesis Coupe arms you with an advanced multi-link rear suspension and available 4-piston Brembo® brakes.





GENESIS COUPE in Santiago Silver / GENESIS COUPE in Ibiza Blue



HYUNDAI RMR PM580-T Unlimited Pikes Peak Racecar



SPORT-TUNED SHIFTING Genesis Coupe's 6-speed manual transmission features carbon synchronizer rings for a more precise feel with added durability. The available 8-speed paddle-shift SHIFTRONIC automatic transmission is engineered with rev-matching to help optimize the power band as you approach the apex of a corner.



TRACK-TUNED SUSPENSION An independent dual-link front, five-link rear suspension architecture delivers an ideal balance of razor-sharp responsiveness with enough refinement to make Genesis Coupe comfortable for everyday driving. R-Spec and Ultimate models allow for even more fine-tuning at the track with a camber bolt kit.⁴

Performance Engineering

TO ACHIEVE PEAK PERFORMANCE, WE CLIMBED TO THE TOP OF PIKES PEAK.

Since it was first introduced, Genesis Coupe certainly hasn't slacked off. It used one of the world's most intense forms of motorsports to up its game – the legendary Pikes Peak International Hill Climb.

For the 2013 race, a Genesis Coupe prototype was built by Rhys Millen Racing into a 900-horsepower performance machine – one that beat its own 2012 world-record time by 44 seconds. At its core was the same 3.8L Lambda V6 engine that's available in your Genesis Coupe. In fact, 90 percent of the race engine's components were Hyundai production parts.

In street-legal trim, Genesis Coupe's 3.8L GDI V6 engine puts 348 horsepower at your disposal. Sure, it's a tad less than the 900 horses of its hill-climbing cousin. But it's more than enough to wring exceptional performance from Genesis Coupe's front engine/rear drive chassis. By effectively dividing acceleration and cornering forces between the front and rear axles, Genesis Coupe stays balanced and composed as the car's weight shifts from side to side and front to rear through twists, turns, launches and stops. It's a precision feel you'll find addictive.

Photo courtesy of Rhys Millen Racing³

¹ Electronic Stability Control (ESC) cannot control your vehicle's stability under all driving situations. ESC is not a substitute for safe driving practices. No system, no matter how advanced, can overcome physics or correct poor driving. The driver is always responsible for controlling the vehicle and must use caution to avoid loss of control in all driving conditions. Speed, road conditions and driver steering input will affect whether ESC can help prevent loss of control. See Owner's Manual for details. ² The Traction Control System is meant to enhance conscientious driving habits and is not a substitute for safe driving practices. ³ RhysMillenRacing.com. ⁴ Dealer installation required.



Paul Dallenbach wins the 2013 Time Attack class at Pikes Peak in a competition-modified Hyundai Genesis Coupe



PERFORMANCE AND SAFETY HIGHLIGHTS

(See specifications section for availability by model)

- MONOTUBE REAR SHOCKS
- AVAILABLE 4-PISTON BREMBO® BRAKES
- AVAILABLE TORSEN® LIMITED-SLIP DIFFERENTIAL
- ADVANCED HIGH-STRENGTH STEEL CHASSIS
- ELECTRONIC STABILITY CONTROL¹
- TRACTION CONTROL SYSTEM²
- 18" ALLOY WHEELS (STANDARD)
- 19" ALLOY WHEELS (R-SPEC/ULTIMATE)

GENESIS COUPE 3.8

348 HP

A dark grey car is shown from a rear three-quarter view, driving on a racetrack. The background is heavily blurred to convey a sense of high speed. In the distance, a traffic light with five red lights is visible under a cloudy sky. The car's rear wheel and door are clearly visible.

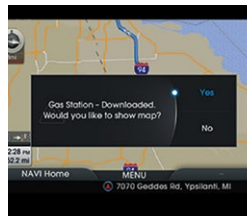
**GREET THE ROAD AHEAD
WITH A FIRM GRIP.**



GENESIS COUPE Ultimate in Empire State Gray



HYUNDAI BLUE LINK® Our innovative telematics let you search for points of interest using voice commands and download them to the navigation system. You can receive vehicle diagnostic reports to ensure all systems are go. A mobile app even lets you lock, unlock and start your car remotely.¹ For details, visit HyundaiBlueLink.com.²



ADVANCED NAVIGATION SYSTEM An available navigation system locates points of interest using a 7" touchscreen or your voice commands. Found a destination on your smartphone? Send it to the nav system via Blue Link, and it will map out the trip for you. NavTraffic® is also available to plot a course that avoids road closures and traffic jams.



GENESIS COUPE in Tan Leather

Ergonomics and Technology

YOUR POWER TRIP BEGINS HERE.

That racing version built for the Pikes Peak “Race To The Clouds”? Its bare-bones interior is nothing like what you’ll find inside your own Genesis Coupe. Our designers managed to craft the refinements and technology features of a luxury coupe interior inside a sports car.

Genesis Coupe brings a near-total integration of the driver’s digital life. Some of your favorite smartphone features can be seamlessly served up inside the car. Hear selections from your music playlists. Use voice commands to find your favorite people, places and things. SiriusXM® Satellite Radio channels are also at your fingertips on Genesis Coupe’s available 7" color touchscreen.³

And let this be the musical accompaniment to your own climb to the top: An available 360-Watt, 10-speaker Infinity® premium audio system. The strategic placement of speakers throughout the cabin delivers a brilliantly balanced, deeply rich sound that creates an entirely new dimension of listening enjoyment in concert with HD Radio.® And since it lets you store up to 8 GB of your own music, there’s no excuse not to hear exactly what you want.

¹ Remote Vehicle Start is only available for vehicles equipped with push-button start and automatic transmission. Not available on all models. ² Only use Blue Link and corresponding devices when it is safe to do so. Blue Link is available on most 2014-2015 Hyundai vehicles. Blue Link subscription service agreement required. Features vary by subscription plan. Blue Link service works using CDMA-based cellular networks in the 50 United States. Blue Link service is not available where there is no cellular coverage, particularly in enclosed or remote areas. Service availability may be affected by signal strength, foliage, weather, topographical conditions (mountains) and nearby structures (tall buildings, tunnels) and other factors. For additional details and system limitations, visit HyundaiBlueLink.com. ³ All SiriusXM services require a subscription, sold separately by SiriusXM after a trial period. All fees and programming are subject to change. SiriusXM U.S. satellite services are available only in the 48 contiguous United States, DC, and Puerto Rico. SiriusXM Internet radio service is available throughout our satellite service area and in AK and HI. Sirius, XM and all related marks and logos are trademarks of Sirius XM Radio Inc.



ERGONOMICS AND TECHNOLOGY HIGHLIGHTS

(See specifications section for availability by model)

- PROXIMITY KEY ENTRY WITH PUSH-BUTTON START
- AUTOMATIC TEMPERATURE CONTROL
- AVAILABLE TILT-AND-SLIDE GLASS SUNROOF
- AVAILABLE DOUBLE-STITCHED HEATED LEATHER SEATING SURFACES
- AVAILABLE POWER-LUMBAR SUPPORT
- LEATHER-WRAPPED STEERING WHEEL AND SHIFT KNOB
- BLUETOOTH® HANDS-FREE PHONE WITH VOICE RECOGNITION AND AUDIO STREAMING

GENESIS COUPE PREMIUM AUDIO

360 Watts

**AWE INSPIRED PERFORMANCE.
BY DESIGN.**





GENESIS COUPE in Caspian Black



2015 GENESIS COUPE

KEY STANDARD FEATURES

- 348 HP, 3.8L Gasoline Direct Injection DOHC V6 engine with Dual Continuously Variable Valve Timing¹
- 6-speed close-ratio manual or 8-speed SHIFTRONIC[®] automatic transmission with paddle shifters
- Sport-tuned suspension and strut brace
- Proximity key entry with push-button start
- Power windows with auto-down/up
- Power door locks and outside mirrors
- Automatic temperature control
- Outside temperature display
- Electroluminescent gauge cluster with trip computer and information display screen
- Tilt-and-telescopic leather-wrapped steering wheel and shifter
- Steering wheel audio and cruise controls
- AM/FM/SiriusXM[®]/CD/MP3 audio system with 6 speakers
- iPod[®]/USB and MP3 auxiliary input jacks
- Bluetooth[®] hands-free phone system with streaming audio
- Auto-dimming rearview mirror with HomeLink[®] transceiver and compass
- 6-airbag safety system with Occupant Classification System
- Electronic Stability Control with Traction Control System
- 4-wheel disc Anti-lock Braking System
- Electronic Brake-force Distribution and Brake Assist
- Tire Pressure Monitoring System
- Active front head restraints
- Front seatback pockets
- Carpeted floor mats
- Seat belt guide
- Heated outside mirrors with turn signal indicators
- Automatic headlights with LED Daytime Running Lights
- LED taillights
- Fog lights
- 18" alloy wheels with P225/45VR18 (front) and P245/45VR18 (rear) tires

EXTERIOR DIMENSIONS

- Wheelbase 111.0 in
- Length 182.3 in
- Width (excluding mirrors) 73.4 in
- Height 54.5 in
- Track (front/rear) 63.0/63.6 in
- Coefficient of Drag 0.32 Cd
- Base Curb Weight (manual/auto) 3,514/3,538 lbs

INTERIOR DIMENSIONS

- Head Room (front/rear) 39.2/34.6 in
- Leg Room (front/rear) 44.1/30.3 in
- Shoulder Room (front/rear) 56.7/52.8 in
- Hip Room (front/rear) 56.0/49.2 in
- Passenger Volume 88.8 cu ft
- Cargo Volume 10.0 cu ft
- Total Interior Volume 98.8 cu ft

R-SPEC

- Standard Equipment plus:**
- + 6-speed close-ratio manual transmission with carbon synchronizers
 - + Track-tuned suspension with low-velocity control dampers
 - + Torsen[®] limited-slip differential
 - + Hillstart Assist Control
 - + Brembo[®] braking system
 - + Front camber adjustment bolt
 - + Black leather bolster/black cloth insert seats
 - + More aggressive seat bolsters
 - + R-Spec badging
 - + 19" alloy wheels with summer tires

WHEELS

18" WHEEL

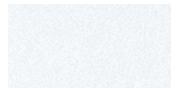


19" WHEEL

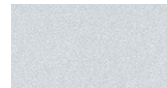


EXTERIOR COLORS

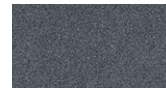
CASABLANCA WHITE



SANTIAGO SILVER



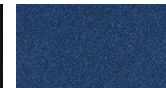
EMPIRE STATE GRAY



CASPIAN BLACK



IBIZA BLUE



TSUKUBA RED

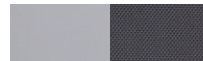


INTERIOR COLORS

BLACK CLOTH



GRAY LEATHER / GRAY CLOTH



BLACK LEATHER / BLACK CLOTH



BLACK LEATHER



TAN LEATHER



AMERICA'S BEST WARRANTY

POWERTRAIN LIMITED WARRANTY 10 YEARS 100,000 MILES	NEW VEHICLE LIMITED WARRANTY 5 YEARS 60,000 MILES
ANTI-PERFORMANCE WARRANTY 7 YEARS UNLIMITED MILES	24/7 ROADSIDE ASSISTANCE 5 YEARS UNLIMITED MILES

See dealer for LIMITED WARRANTY details. Fuel economy estimated by EPA for comparison only. Mileage may vary. While the information contained in this brochure was correct at the time of printing, specifications and equipment can change. Feature comparisons based on competitor information available at the time of printing. No warranty or guarantee is being extended in this brochure, and Hyundai reserves the right to change product specifications and equipment at any time without incurring obligations. Some vehicles are shown with optional equipment. Specifications apply to U.S. vehicles only. Please contact your Hyundai dealer for current vehicle specifications. As part of Hyundai's commitment to a responsible environment, this brochure was printed using paper certified by the Forest Stewardship Council[®]. FSC[®] certification helps ensure that the highest social and environmental standards are met in the making of the paper we use, contributing to conservation, responsible management, and community-level benefits for people near the forests. ¹ 348 HP with premium fuel, 344 HP with standard unleaded fuel. ² NavTraffic[®] requires a SiriusXM subscription, sold separately after a complimentary 90-day introductory trial period.

ULTIMATE

- Standard Equipment plus:
- + Track-tuned suspension
 - + Torsen[®] limited-slip differential
 - + Brembo[®] braking system
 - + Front camber adjustment bolt
 - + Leather seating surfaces and heated front seats
 - + Power driver seat slide and power lumbar
 - + 360-Watt Infinity[®] premium audio system with 10 speakers
 - + Navigation system with 7" touchscreen and XM NavTraffic[®] (90-day trial)²
 - + Hyundai Blue Link telematics
 - + Metalgrain and chrome interior accents
 - + Aluminum pedals
 - + Illuminated door sill plates
 - + Power tilt-and-slide glass sunroof
 - + High Intensity Discharge Xenon headlights
 - + Aero wiper blades
 - + Rear spoiler
 - + Rear parking sensors
 - + 19" alloy wheels with summer tires

EPA MILEAGE ESTIMATES

- Manual Transmission (city/hwy/combined) 16/24/19 MPG
- Automatic Transmission (city/hwy/combined) 16/25/19 MPG
- Fuel Tank Capacity 17.2 gal
- Top Speed (limited) 149 mph

HYUNDAI
Assurance

HYUNDAIASSURANCE.COM

Wherever the road takes you, we've got your back with Hyundai Assurance, an umbrella of services and benefits that includes America's Best Warranty, 24/7 Roadside Assistance, innovative safety and car care features...and more.

VISIT HYUNDAI.COM OR OUR SOCIAL MEDIA SITES

