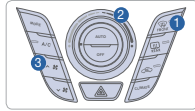


WALK THE CUSTOMER THROUGH EACH OF THE FOLLOWING KEY DELIVERY FEATURES

DEFROST - page 14-17

- 1 Press the front defrost button.
- 2 Set to warmest temperature setting.
- 3 Set to highest fan speed.



BLUETOOTH – page 22-23

- Demonstrate phone pairing
- Refer to www.hyundaiusa.com/bluetooth
- Demonstrate QR code



BLUE LINK – pages 24-26

- Assist with creating MyHyundai.com account
- Assist with Blue Link enrollment
- Show Blue Link Users Manual & tear out Voice Commands/Quick Tip Card
- Encourage customers to press the Blue link button

CLOCK – pages 36

- Demonstrate how to set clock (including daylight savings setting for Navigation equipped vehicles)

NAVIGATION (if applicable) – page 29-30

- Demonstrate navigation system POI, enter dealer address

TIRE PRESSURE MONITORING SYSTEM (TPMS) – page 35

- Explain TPMS function of customer
- When illuminated, one or more tires are under-inflated
- Blinks for approximately one minute then remains illuminated when there is a malfunction with the TPMS



VEHICLE SETTINGS – pages 12-13 and 27-30

- Demonstrate vehicle settings in instrument cluster
- Demonstrate navigation use, enter dealer address
- Show radio presets

MAINTENANCE

Scheduled Maintenance	Normal Usage		Severe Usage*	
	Interval	Miles	Interval	Miles
Engine Oil And Filter*	1st Replace Add 1 Replace	3,000 or 6 mos. 5,000 or 6 mos.	Replace	3,000 or 3 mos.
Fuel Additives *1	1st Add Add 1 Add	3,000 or 6 mos. 5,000 or 6 mos.	Add Same as Normal	
Tire Rotation	Perform	7,500	Perform	7,500
Air Cleaner Filter	Inspect Replace	7,500 30,000	Inspect Replace	Same As Normal More Frequently
Battery Condition	Inspect	7,500	Inspect	Same As Normal
Vacuum Hose	Inspect	7,500	Inspect	Same As Normal
Climate Control Air Filter (For Evaporator And Blower Unit)	Replace	15,000	Replace	More Frequently
Air Conditioning Refrigerant	Inspect	15,000	Inspect	Same As Normal
Brake Hoses & Lines	Inspect	15,000	Inspect	Same As Normal
Drive Shafts & Boots	Inspect	15,000	Inspect	7,500 or 6 mos.
Electronic Throttle Control	Inspect	15,000	Inspect	Same As Normal
Exhaust Pipe & Muffler	Inspect	15,000	Inspect	Same As Normal
Front Disc Brake/Pads, Calipers	Inspect	15,000	Inspect	More Frequently
Rear Brake Drums/Linings Rear Brake Disc/Pads	Inspect	15,000	Inspect	More Frequently
Steering Gear Box, Linkage & Boots/ Lower Arm Ball Joint, Upper Arm Ball Joint	Inspect	15,000	Inspect	More Frequently
Suspension Mounting Bolts	Inspect	15,000	Inspect	Same As Normal
Brake/Clutch Fluid	Inspect	30,000	Inspect	Same As Normal
Fuel Filter	Inspect	30,000	Inspect	Same As Normal
Fuel Lines, Fuel Hoses And Connections	Inspect	30,000	Inspect	Same As Normal
Fuel Tank Air Filter	Inspect	30,000	Inspect	Same As Normal
Parking Brake	Inspect	30,000	Inspect	More Frequently
Vapor Hose, Fuel Tank & Fuel Filler Cap	Inspect	30,000	Inspect	Same As Normal
Valve Clearance	Inspect	60,000	Inspect	Same As Normal
Manual Transmission Fluid	Inspect	37,500	Replace	75,000
Dual Clutch Transmission Fluid	Inspect	37,500	Replace	75,000
Drive Belt (Alt, A/C)	1st Inspect 60,000 or 72 mos. Add. Inspect 15,000 or 24 mos.		Inspect	Same As Normal
Spark Plugs (Iridium Coated)	Replace	45,000	Replace	More Frequently
Coolant	1st Replace 120,000 or 10 yrs. Add Replace 30,000 or 24 mos.		Replace	Same As Normal

*Check the engine oil regularly between recommended oil change. Hyundai recommends Quaker State oil.
*1 If TOP TIER Detergent Gasoline is not available, one bottle of additive is recommended. Additives are available from your authorized Hyundai dealer along with information on how to use them. Do not mix other additives.
*See Owner's Manual for details.

Looking for more detailed information? This Quick Reference Guide does not replace your vehicle's Owner's Manual. If you require additional information or are unsure of a specific issue, you should always refer to the vehicle's Owner's Manual or contact your authorized Hyundai dealer.

The information contained in this Quick Reference Guide was correct at the time of printing, however, specifications and equipment can change without notice. No warranty or guarantee is being extended in this Quick Reference Guide, and Hyundai reserves the right to change product specifications and equipment at any time without incurring obligations. Some vehicles are shown with optional equipment. Specifications apply to U.S. vehicles only. Please contact your Hyundai dealer for current vehicle specifications.

NP150-V2016-A
(Rev 03/16/15)
Printing 03/19/15

HYUNDAI **VELOSTER TURBO**
Quick Reference Guide

www.hyundai.com

HYUNDAI
NEW THINKING.
NEW POSSIBILITIES.

Roadside Assistance: **1-800-243-7766**
Consumer Affairs: **1-800-633-5151**
Sirius XM® Radio: **1-800-967-2346**
Blue Link: **1-855-2BLUELINK**
(1-855-225-8354)

Table of contents

GETTING STARTED

Engine Start/Stop	03
Remote keyless entry	02
Front seat adjustment	04
Headrest adjustment	04
Seat belt adjustment	05

FEATURES AND CONTROLS

Active ECO System	37
Central door lock switch	07
Child-protector rear door lock	11
Climate control	14-17
Clock adjustment	36
Cruise control system	18
Driver's main control	07
Electronic Stability Control (ESC)	37
Fuel door	06
Head lights and fog lights	08
Instrument cluster	12-13
Instrument panel illumination	13
Interior lights	11
Rearview camera	35
Seat warmer	36
Steering wheel adjustments	06
Steering wheel controls	18-19
Sunroof	10
Transmissions	32-34
Trip computer	13
Tire Pressure Monitoring System (TPMS)	35
Wiper and washer	09

MULTIMEDIA

Audio	27-28
AUX, USB, and iPod® Port	31
Blue Link® Telematics system	24-26
Bluetooth operational tips	20-21
Bluetooth phone pairing	22-23
Navigation	29-30

*Some vehicles may not be equipped with all the listed features.

How to:

1. Pair phone to your vehicle. Refer to page 22-23.
2. Get started with Blue Link. Refer to page 24-26.



Steering wheel adjustments
Page 06



Instrument cluster
Pages 12-13

Wiper and washer
Page 09



Standard Audio

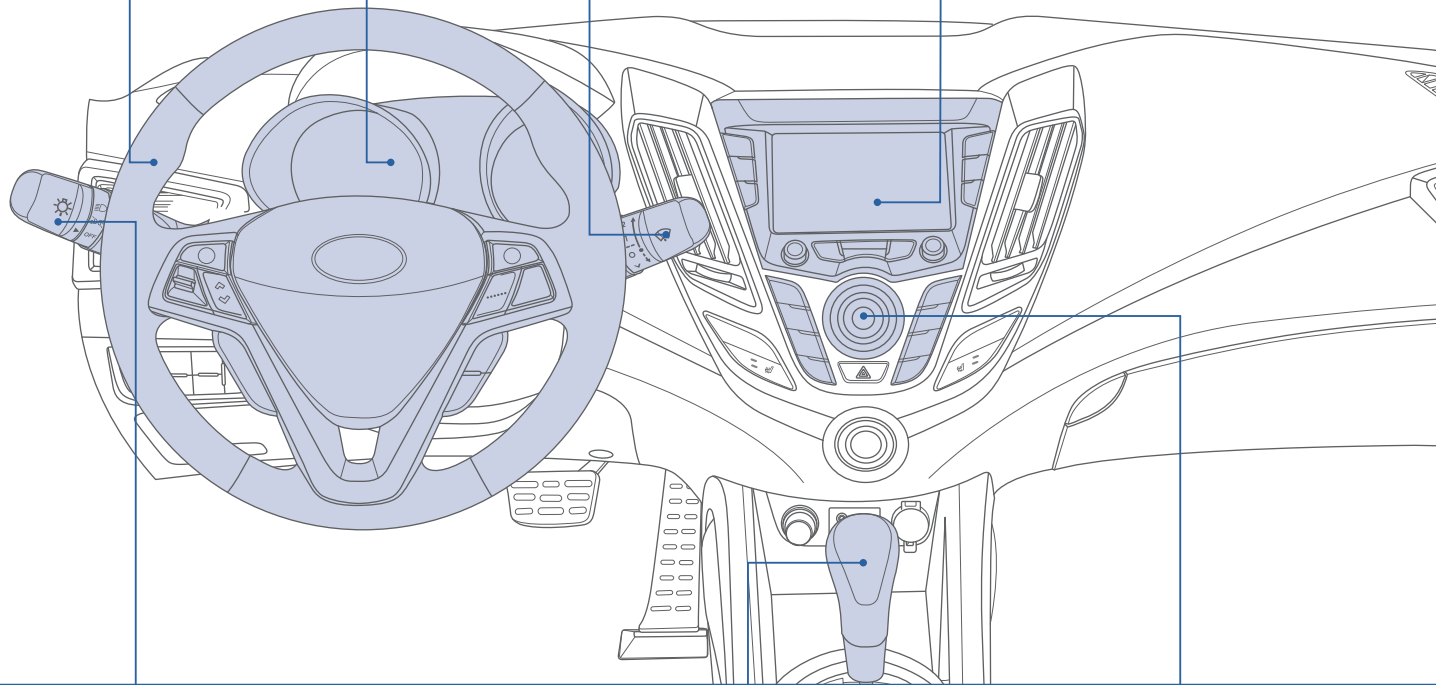


Navigation Audio



Navigation

Audio/
Navigation
Pages 27-30



Head lights and fog lights
Page 08



Transmission
Pages 32-34



Climate control
Pages 14-17

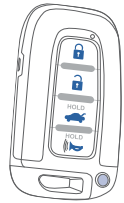
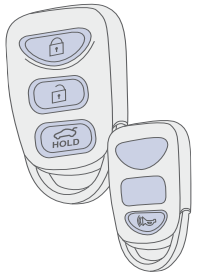
Use this Quick Reference Guide to learn about the features that will enhance your enjoyment of your Hyundai. More detailed information about these features are available in your Owner's Manual.





WARNING!

To reduce the risk of serious injury to yourself and others, read and understand the important SAFETY INFORMATION in your Owner's Manual.



REMOTE KEYLESS ENTRY

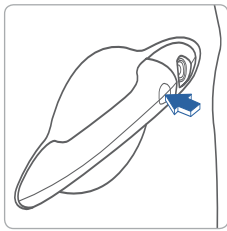


-  Lock
-  Unlock
-  Tailgate unlock (press and hold)
-  Panic

Keyless Entry



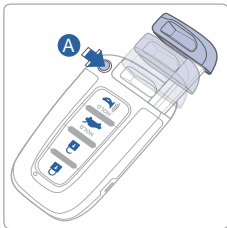
Smart Key



Driver's door Lock/Unlock
Smart key must be within range.

Press:

- Once – Unlock driver door
- Twice – Unlock all doors
- Third – Lock all doors



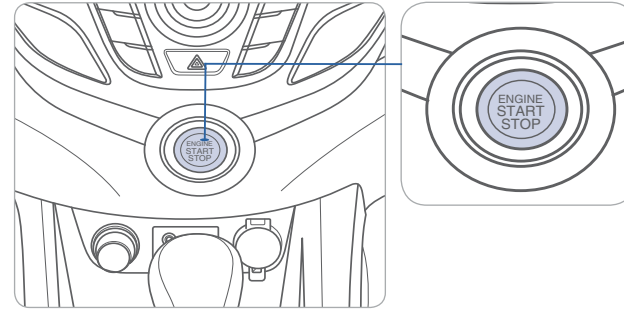
Remove mechanical key

Press and hold the release **A** button and remove the key.

Reinstall mechanical key

Put the key into the key slot and push it until a click sound is heard.

ENGINE START/STOP BUTTON



With the ignition OFF, press the engine start/stop button:

- Once for ACC (Accessory) mode.
- Twice for ON mode.
- Three times for OFF.

To start the engine, press the start/stop button while:

- EcoShift Dual Clutch Transmission: depressing the brake pedal.
- Manual Transmission: depressing the clutch and brake pedals.

To shut engine OFF, shift to:

- EcoShift Dual Clutch Transmission: P (Park) and press the start/stop button.
- Manual Transmission: Select Neutral, apply the hand brake, and press the start/stop button.

Emergency situations

Shut off engine while driving:

Press engine start/stop button for more than 2 seconds or press it 3 times consecutively within 3 seconds.

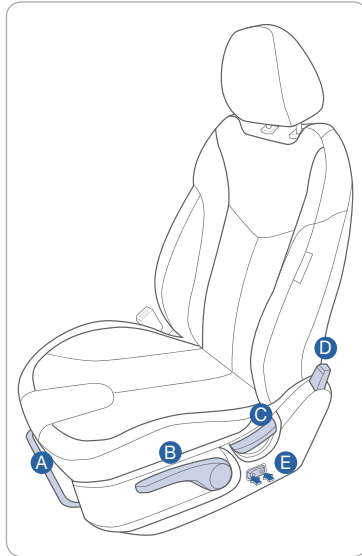
Restart engine while driving:

Press engine start/stop button with shift lever in N (Neutral).



GETTING STARTED

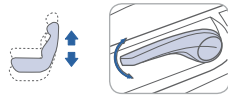
FRONT SEAT ADJUSTMENT



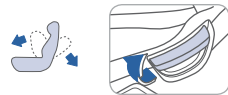
A Forward / backward



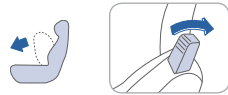
B Seat cushion height (driver's seat only)



C Seatback angle



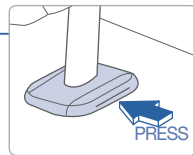
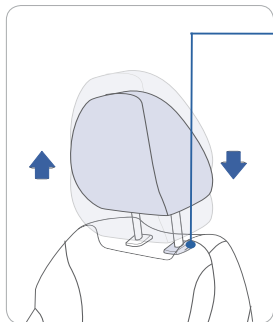
D Folding Lever (driver's seat only)



E Lumbar support (driver's seat only)



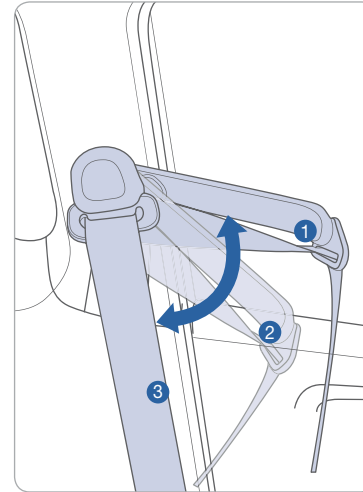
HEADREST ADJUSTMENT



To Raise Headrest:
Pull headrest up.

To Lower Headrest:
Press lock knob while pressing down on headrest.

SEAT BELT ADJUSTMENT (Driver's Front seat)

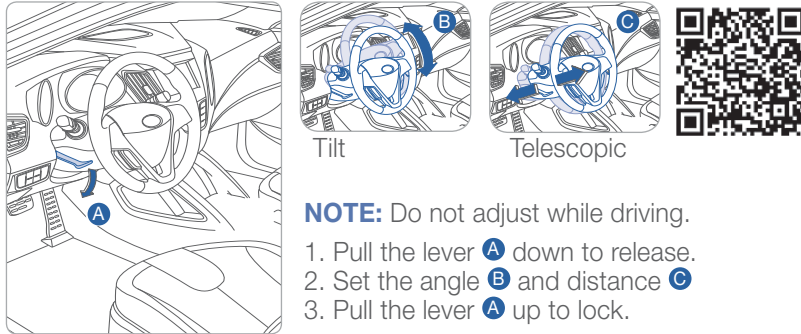


Set the belt extension guide to one of the 3 positions when using the seat belt.

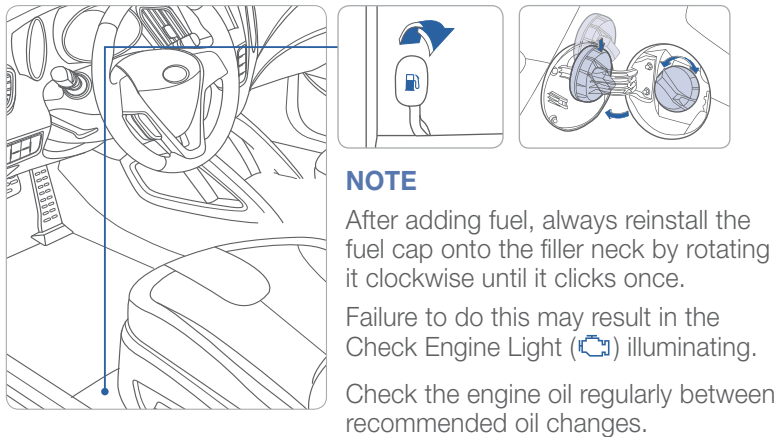
See Owner's Manual for additional seat belt information.



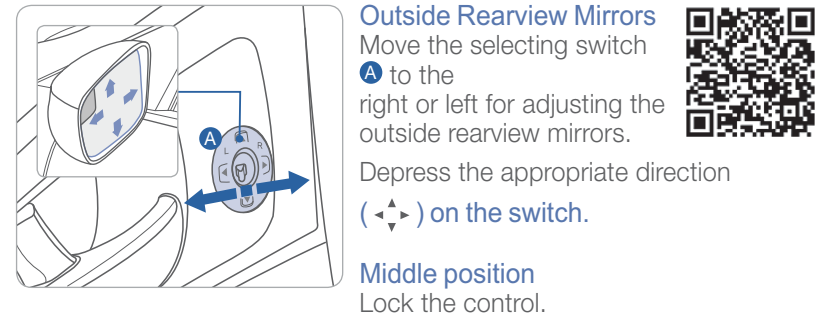
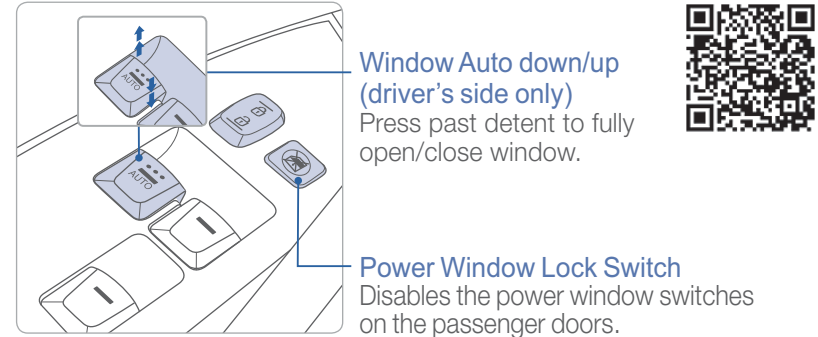
STEERING WHEEL ADJUSTMENTS



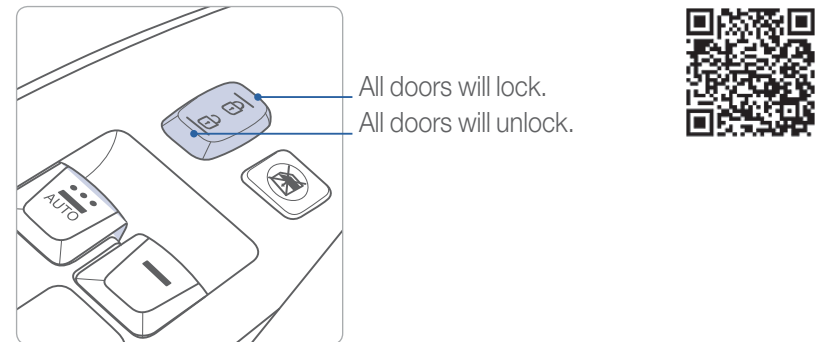
FUEL DOOR



DRIVER'S MAIN CONTROLS

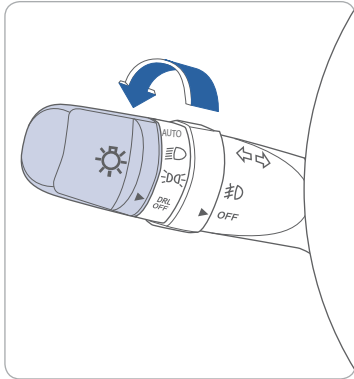


CENTRAL DOOR LOCK SWITCH





HEAD LIGHTS AND FOG LIGHTS

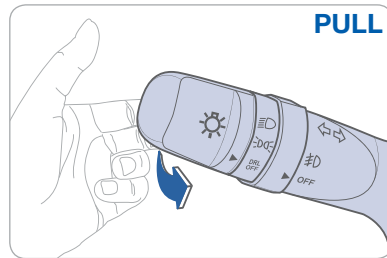
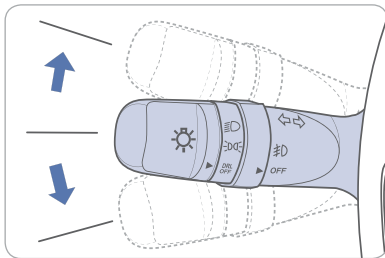


- ▶ | **AUTO** Auto light 
- ▶ |  Head light 
- ▶ |  Parking light
- ▶ | **DRL OFF** DRL OFF

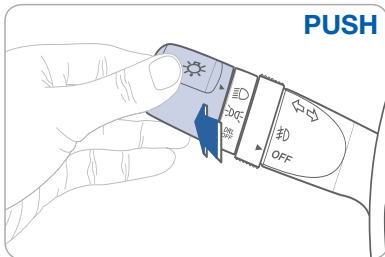
Escort Function

Head lights will stay on for approximately 30 seconds after exiting and locking vehicle. Press remote lock button twice to turn head light off. See Owner's Manual for more detail.

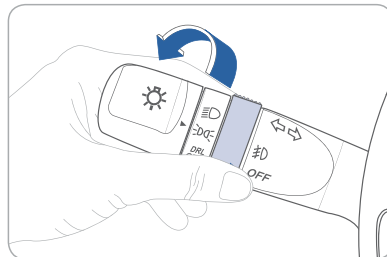
Turn signals and lane change signals **Flashing head lights**



High beam

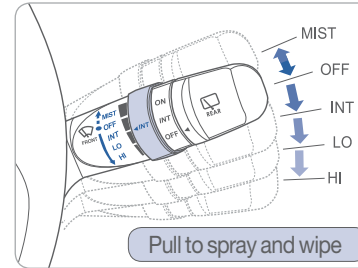


Fog light



WIPER AND WASHER

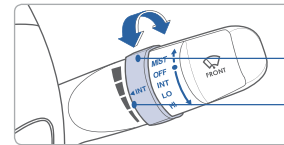
Front Wiper and Washer



- MIST** - Single wipe
- OFF** - Off
- INT** - Intermittent wipe
- LO** - Normal wiper speed
- HI** - Fast wiper speed

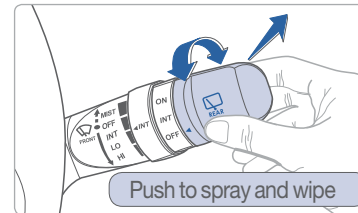


Front Intermittent wipe time adjustment



- Fast wiper speed
- Slow wiper speed

Rear Wiper and Washer

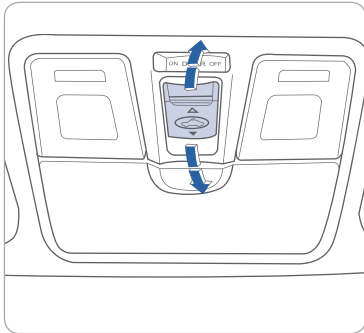


- ON** - Normal wiper operation
- INT** - Intermittent wiper operation
- OFF** - Wiper off



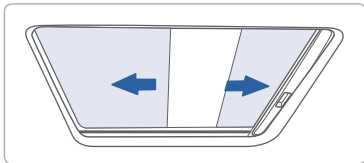
SUNROOF

Sliding the sunroof



To Open

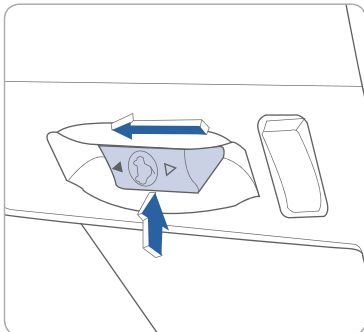
Press switch backward.
Press switch backward past the detent to open completely.



To Close

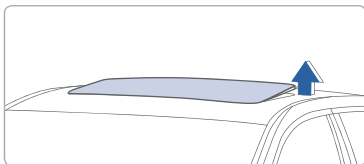
Press switch forward and hold.

Tilting the sunroof



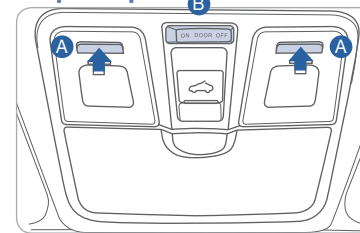
To Tilt

Press or pull switch up or down.



INTERIOR LIGHTS

Map lamp



Push the lens **A** to turn the map lamp on or off.

Switch **B**

ON
Map lamp and room lamp will turn on.

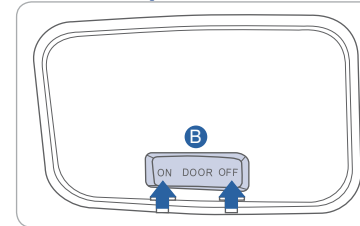
DOOR

Map lamp and room lamp will turn on when any door is open except tailgate.

OFF

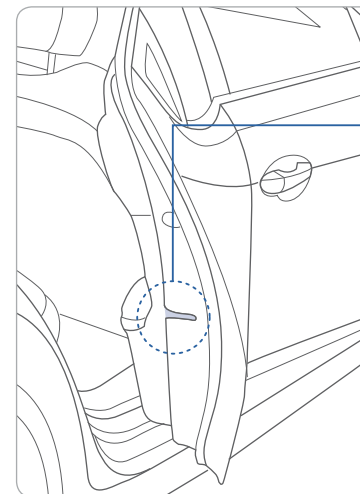
The lights stay off at all times, except when individually turned on.

Room lamp



CHILD-PROTECTOR REAR DOOR LOCK

Allows or prevents opening the rear door from inside of the vehicle.



Lock (🔒)

Insert a key into the hole and turn it to the lock (🔒) position.

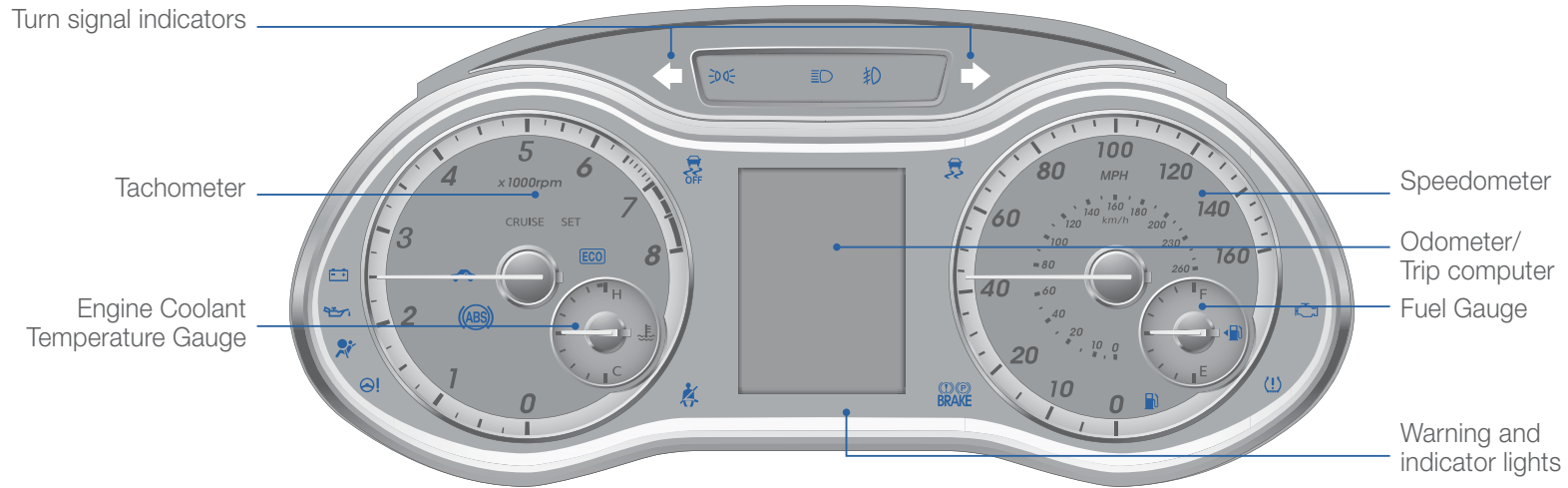


Unlock

Insert a key into the hole and turn it clockwise to the unlock position.



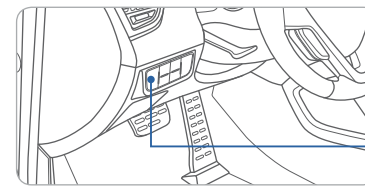
FEATURES AND CONTROLS



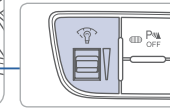
WARNINGS AND INDICATORS

Air bag warning light	Parking brake & Brake fluid warning light	ABS warning light
Seat belt warning light	Low Tire Pressure Indicator / TPMS (Tire Pressure Monitoring System) malfunction indicator	
High beam indicator	Engine oil pressure warning light	Charging system warning light
EPS Electric Power Steering system warning light	Door open warning light	Turn signal indicator
Immobilizer indicator	Dual clutch transmission indicator	Manual transmission shift indicator
Tailgate open warning light	Low fuel level warning light	ESC (Electronic Stability Control) indicator
ESC (Electronic Stability Control) OFF indicator	CRUISE Cruise indicator	SET Cruise SET indicator
Malfunction indicator light	Front fog light indicator	ECO Active ECO indicator
Light on indicator	Engine coolant temperature warning light	KEY OUT KEY OUT indicator
Low beam indicator		

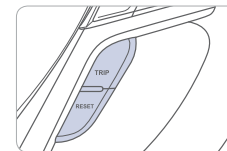
INSTRUMENT PANEL ILLUMINATION



Push the control switch up or down to adjust the brightness

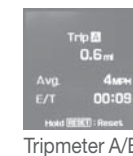


TRIP COMPUTER



Press the TRIP button to select functions as shown below.

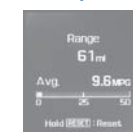
Press and hold the RESET button to reset the Tripmeter.



Tripmeter A/B



Service



Range (Miles to Empty)



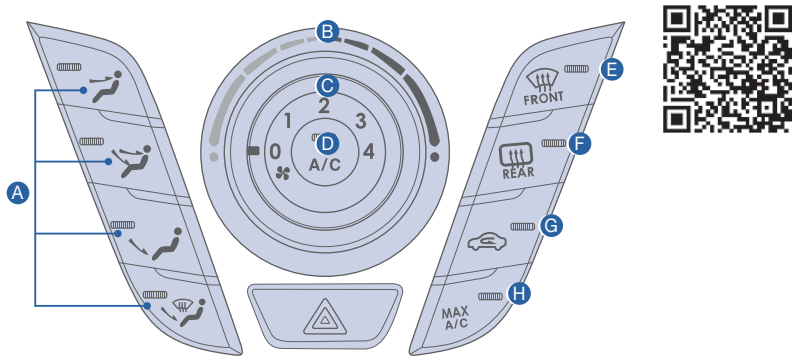
User Setting





FEATURES AND CONTROLS

MANUAL CLIMATE CONTROL

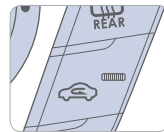


- A** Mode selection buttons
- B** Temperature control knob
- C** Fan speed control knob
- D** Air Conditioning button
- E** Front windshield defrost button
- F** Rear window defroster button
- G** Air intake control button
- H** MAX Air Conditioning button

MODE SELECTION

- Face Level
- Bi Level
- Floor Level
- Floor Defrost Level

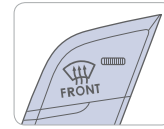
AIR INTAKE CONTROL



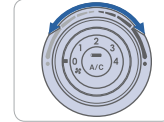
This is used to select outside (fresh) air position or recirculated air position.

- Outside (fresh) air position
- Recirculated air position

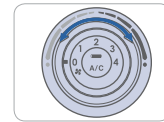
DEFROSTING/DEFOGGING



1. Press the front windshield defrost control.



2. Set the temperature control to the warmest setting.

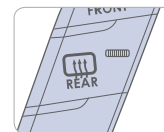


3. Set the fan speed to the highest setting.

NOTE

To reduce the tendency of the glass fogging and improve visibility, keep the interior surface of the windshield clean by wiping it with a clean cloth and glass cleaner. In addition, select air intake control to the outside (fresh) air position whenever possible while operating the vehicle.

REAR WINDOW DEFROSTER

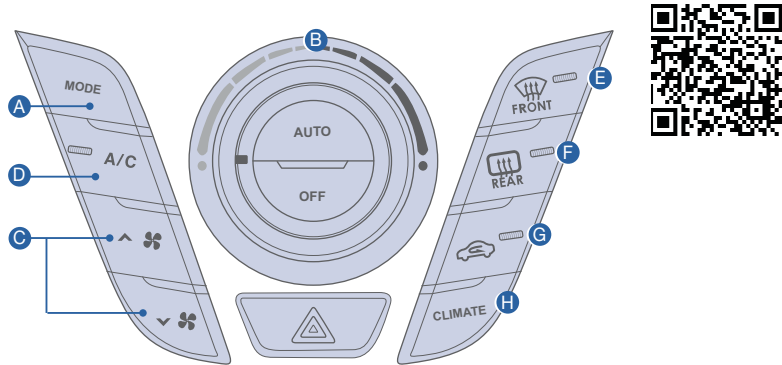


Press to activate / deactivate the rear defroster.



FEATURES AND CONTROLS

AUTOMATIC CLIMATE CONTROL

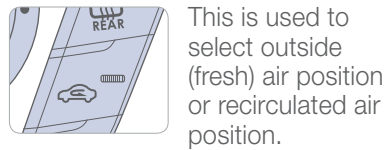


- A** Mode selection button
- B** Temperature control knob
- C** Fan speed control buttons
- D** Air Conditioning button
- E** Front windshield defrost button
- F** Rear window defroster button
- G** Air intake control button
- H** Climate button

MODE SELECTION

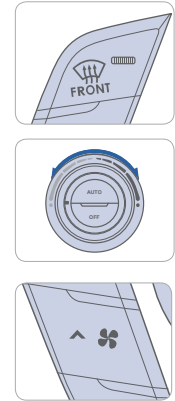
- Face Level
- Bi Level
- Floor Level
- Floor Defrost Level

AIR INTAKE CONTROL



- Outside (fresh) air position
- Recirculated air position

DEFROSTING/DEFOGGING

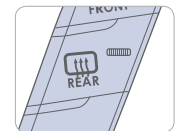


1. Press the front windshield defrost control.
2. Set the temperature control to the warmest setting.
3. Set the fan speed to the highest setting.

NOTE

To reduce the tendency of the glass fogging and improve visibility, keep the interior surface of the windshield clean by wiping it with a clean cloth and glass cleaner. In addition, select air intake control to the outside (fresh) air position whenever possible while operating the vehicle.

REAR WINDOW DEFROSTER

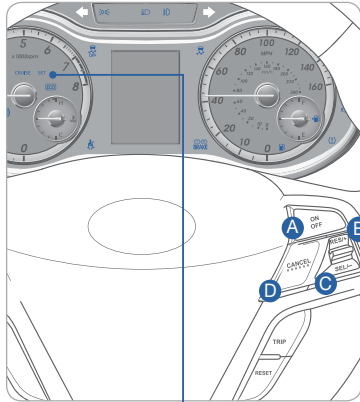


Press to activate / deactivate the rear defroster.



STEERING WHEEL CONTROLS

Cruise control system



To set a cruising speed

1. Press ON/OFF button **A** and the CRUISE indicator will illuminate in the instrument cluster.
2. Accelerate to desired cruising speed (above 25 mph). Press SET-button **C** and remove your foot from the accelerator pedal.

To accelerate or decelerate

Press RES + button **B** up to increase set cruising speed.

Press SET - button **C** down to decrease set cruising speed.

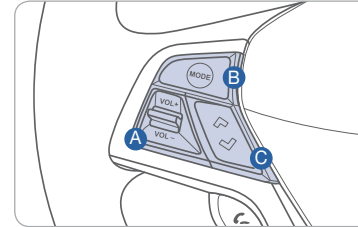
To cancel cruising speed

Press CANCEL button **D**, depress brake pedal, or press ON/OFF button **A**.

CRUISE
Cruise indicator

SET
Cruise set indicator

Audio control



A VOLUME

Raise or lower speaker volume.

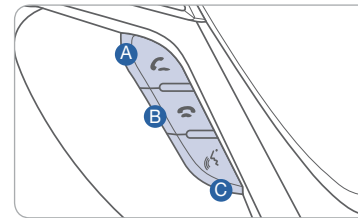
B MODE

Change the audio source.
Hold to turn Audio power ON/OFF.

C SEEK/PRESET

Press to change presets.
Press and hold to seek stations.

Bluetooth control



A CALL

Place and transfer call.

B END

End call or cancel function.

C TALK

Activate voice recognition.



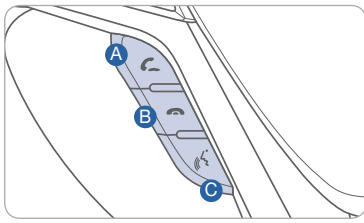
MULTIMEDIA

BLUETOOTH OPERATIONAL TIPS

In the following situations you or the other party may have difficulty hearing each other:

1. When the Bluetooth volume is at a high level. To reduce echo and distortion, try lowering the volume.
2. When driving on a rough road, high speeds and/or with the window open.
3. When the air conditioning vents are facing the microphone and/or when the air conditioning fan is at the max speed.

Bluetooth control



- A CALL**
Place and transfer call.
- B END**
End call or cancel function.
- C TALK**
Activate voice recognition.

To Answer a Call:

- Press button on the steering wheel.

To Reject a Call:

- Press button on the steering wheel.

To Adjust Ring Volume:

- Use the VOLUME buttons on the steering wheel.

To Transfer a Call to the Phone (Private Mode):

- Press and hold button on the steering wheel until the audio system transfers a call to the phone.

To Finish a Call:

- Press button on the steering wheel.



Making a call using voice recognition:

The menu tree identifies available voice recognition Bluetooth® functions.

Calling by Name:

1. Press button.
2. Say the following command:
 - “Call <John Smith>”: Connects the call to John.
 - “Call <John Smith> on <Mobile/Home/Office>”: Connects the call to John’s Mobile, Home, or Office phone number.

Dialing by Number:

1. Press button.
2. Say “Dial Number”.
3. Say desired phone numbers.
4. Say “Dial” to complete the call.

For complete list of commands, refer to your Owner’s Manual.

VOICE RECOGNITION TIPS

Your vehicle is equipped with Voice Recognition technology which allows drivers to operate their phones without having to take their eyes off the road to minimize distractions.

Voice recognition performance may be affected if driving with windows and sun roof open; when the heating-cooling system is on; when passing in a tunnel or when driving on rugged and uneven roads.

Quick reference on using voice commands

To start voice command. Press the key, the following commands are available:

Command	Function
More Help	Provides guidance on commands that can be used anywhere in the system
Help	Provides guidance on commands that can be used within the current mode.
Calls <Name>	Calls <Name> saved in Contacts. Ex) Call “John”
Dial <Number>	Call can be made by dialing the spoken numbers. Ex) Call “123”
Phone	Provides guidance on Phone related commands. After saying this command, say “Call History”, “Contacts” to execute corresponding functions.
Call History	Displays the Call History screen.
Contacts (Call by Name)	Displays the Contacts screen. After saying this command, say the name of a contact saved in the Contacts to automatically connect the cell.
Dial Number	Display the Dial number screen. After saying this command, you can say the number what you want to call.



BLUETOOTH PHONE PAIRING

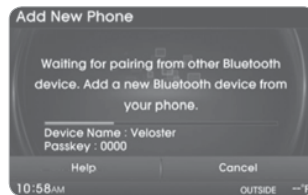
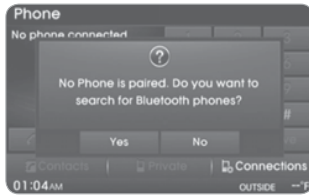
Pairing tutorials, phone compatibility and Operational tips can be found through the Smart QR code using the QR reader application on your Smartphone.



Phone setup (pairing phone) with Standard Radio

NOTE Vehicle must be in parked to complete pairing process.

1. Press PHONE button on the radio or on the steering wheel remote control.
2. Touch “Yes” to search for Bluetooth phones.

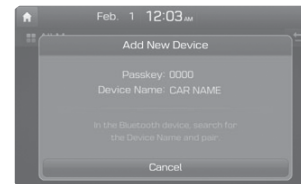


3. In your phone, initiate a search for Bluetooth devices.
4. After search is completed in your phone, select “Veloster”.
5. Input the passkey displayed on screen to your phone.



Phone setup (pairing phone) with Navigation

1. Press the PHONE button in the head unit or button in the steering wheel remote control.
2. Press <YES> to search for Bluetooth phones.
3. Pair your car after your mobile phone detects the Bluetooth device.
4. Enter the passkey or accept the authorization popup. (The default passkey is 0000.)
5. Connect Bluetooth.



NOTE: Vehicle must be parked to complete pairing process.

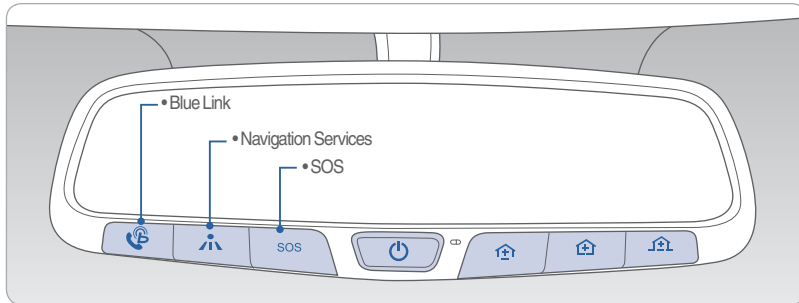
Please visit www.hyundaiusa.com/Bluetooth for a list of compatible phones tested to work with Hyundai's Bluetooth® system.



MULTIMEDIA



BLUE LINK TELEMATICS SYSTEM



Blue Link subscription is required. To enroll, please visit your dealership or MyHyundai.com.

Press the button for access to the voice-response menu of services.

- You can say:

For Audio equipped	For Navigation equipped
<ul style="list-style-type: none"> New Destination Service Link Roadside Assistance Valet Alert Help Cancel 	<ul style="list-style-type: none"> Service Link Roadside Assistance Blue Link Account Services Help Cancel

Press the button for Destination Search Powered by Google™.

- For audio equipped vehicles, you will receive turn-by-turn directions once you search for your destination. To hear a list of commands, say, "Help". For navigation equipped vehicles, state your desired destination after the prompt and select the POI from the touchscreen display to navigate.

Press the **SOS** button for SOS Emergency Assistance.

Refer to your Blue Link User's Manual for detailed information on system operation.

For immediate assistance with subscription services, please call 1-855-2BLUELINK (1-855-225-8354).

Google™ is a registered trademark of Google, Inc.

Remote Start

Remote Start



You can download the Blue Link mobile app to your compatible smart phone from the following sites:

- iPhone® – Apple® App Store
- Android® – Google Play



Scan to see list of compatible devices and to download the app.

Remote Start enables you to remotely start your vehicle from virtually anywhere. For navigation vehicles, you can also enable climate control remotely and turn on the front-window defroster, ensuring a warm or cool car is ready to go when you are.

- To use this feature, you must have a Blue Link Personal Identification Number (PIN). To create or change your PIN, log on to www.MyHyundai.com.

Remember:

- Remote Start with Climate Control will automatically shut off after 10 minutes or after selected engine timer runs out in navigation vehicles.
- While this feature is active, the parking lights will blink until vehicle is turned off or when vehicle is in operation.
- To continue operation of the vehicle, the proximity key must be inside the vehicle with the driver prior to pressing the brake and being able to move the gearshift from the P (Park) position.



MULTIMEDIA



Preconditions:

- Ignition is OFF
- Alarm is armed (i.e., vehicle locked by key fob Remote Door Lock)
- Gearshift level is in the P (Park) position
- Brake pedal is not depressed
- Engine hood is securely closed
- All the doors are closed and locked
- The tailgate or trunk lid is closed
- The security/panic system is not activated
- The proximity key is not inside the vehicle
- The battery power is not low
- Vehicle is located in an open area
- It has been less than 4 days since last vehicle ignition off
- Vehicle located in area with good cell reception

Remote Start will terminate:

- After 10 minutes or after selected engine timer runs out in navigation vehicles
- Brake is pressed without proximity key inside vehicle
- Alarm is triggered without proximity key inside vehicle
- Door/trunk is opened from inside the vehicle

Notice: Laws in some communities may restrict the use of the features that remotely start the engine. For example, some laws may require a person using the remote start feature to have the vehicle in view when doing so or limit the length of time a vehicle engine may idle. Please check local and state regulations for any requirements and restrictions on remote starting of vehicles and engine idling time.

WARNING!

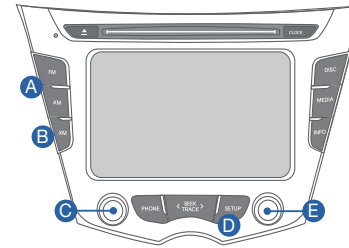
Do not remote start vehicle in an enclosed environment (i.e., closed garage). Prolonged operation of a motor vehicle in an enclosed environment can cause a harmful build-up of carbon monoxide. Carbon monoxide is harmful to your health. Exposure to high levels of carbon monoxide can cause headaches, dizziness or in extreme cases unconsciousness and/or death. Do not leave children or animals unattended in a vehicle while using the remote start function.

CAUTION!

If the vehicle's windshield wipers are left on when the vehicle was last driven, then the wipers will turn on if the remote start function is activated. To avoid damage to the wiper blades (i.e., due to heavy ice or snow accumulated on the windshield), please always turn the vehicle's windshield wipers off when parking the vehicle.

AUDIO

Non-Navigation



Press POWER button **C** to turn radio on.

- TUNING/LISTENING TO CHANNELS
 1. Press FM/AM **A** or XM® **B**.
 2. Rotate TUNE **E** to desired channel.

NOTE

A clear view of the southern sky is recommended to ensure XM® radio reception.

- SETTING PRESET BUTTONS

Six preset frequencies for each radio modes can be stored manually.

 1. Select the radio mode you want to store a station into.
 2. Select the desired station.
 3. Touch and hold one of the preset buttons until audible beep is heard.
- ADJUSTING THE SOUND
 1. Press SETUP **D**.
 2. Touch "Sound" on screen.
- Touch the arrows on screen to adjust desired sound setting.

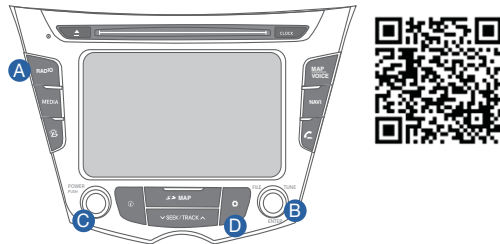


Please refer to your Owner's Manual for more detailed information on how to use your audio system. Complimentary XM® subscription ends three months following the vehicle date of sale. Please contact XM® Radio at 1-800-XM-RADIO (1-800-967-2346) to renew your XM® subscription.



MULTIMEDIA

Navigation



Press POWER button **C** to turn radio on.

- TUNING/LISTENING TO CHANNELS
 1. Press RADIO **A**.
 2. Rotate TUNE **B** to desired channel.

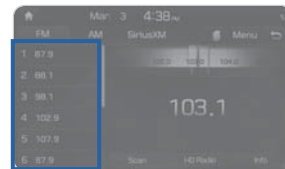
NOTE

A clear view of the southern sky is recommended to ensure XM® radio reception.

- SETTING PRESET MEMORY BUTTONS (FM/AM/XM®)

Six preset frequencies for each radio modes can be stored manually.

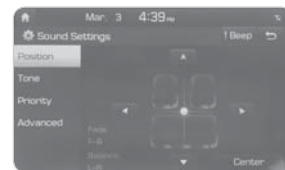
1. Select the radio mode you want to store a station into.
2. Select the desired station.
3. Touch and hold one of the preset buttons until audible beep is heard.



- ADJUSTING THE SOUND

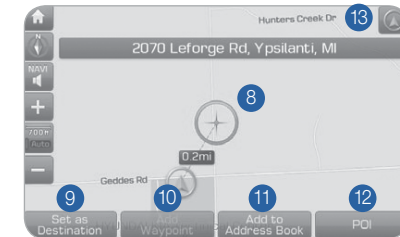
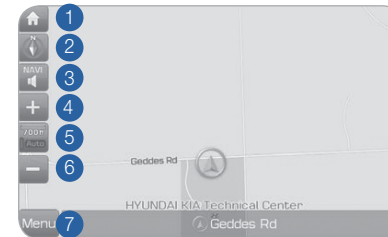
1. Press SETUP **D**.
2. Touch "Sound" on screen.

- Touch the arrows on screen to adjust desired sound setting.



NAVIGATION

Basic features on the map screen



- 1 Move to the Home Screen
- 2 Change the map view mode
- 3 Voice Guidance On/Off
- 4 Zoom in the map
- 5 Set the zoom level automatically according to the guidance
- 6 Zoom out the map
- 7 Quick and easy selection of a destination and options
- 8 Touch to scroll the map
- 9 Quick and easy selection of a destination from the map screen
- 10 Set a waypoint to the current route
- 11 Save frequently used address to address book
- 12 Find a POI (Point Of Interest) around the current position
- 13 View the vehicle's current position on the map screen





MULTIMEDIA

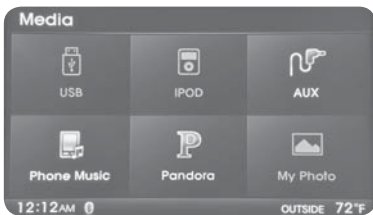
Basic features on the map screen



- 1 Set destination by address search.
- 2 Select from previously inputted addresses and POI's.
- 3 Search POI Name to search the destination.
- 4 Runs Google Local Search.
- 5 Select the desired item in the sub-categories.
- 6 Search and select the desired destination among the searched items.
- 7 Search and select the desired destination among the searched items.
- 8 Search and select the desired destination among the searched items.
- 9 Search the destination with the address book.
- 10 Search destination by phone number.
- 11 Type freeway name and exit/entrance to search.
- 12 Type the Street name, the State, and city name to search.
- 13 Type coordinates to search.



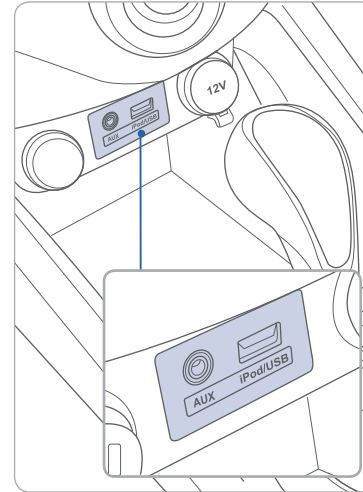
Playing Pandora



1. Ensure you have Pandora app on your smart phone.
2. Pair your smart phone to the Bluetooth system.
3. Select "Media" on Audio screen.
4. Select "Pandora".
5. Initiate Pandora app on your smartphone.

NOTE Not all smart phones are compatible

AUX, USB AND iPod® PORT



iPod® is a trademark of Apple Inc.



Use these jacks to connect an external USB, audio or video device. To view compatible video, connect the device to the supplied Hyundai RCA adapter video cable. Then connect the RCA adapter cable to the AUX jack.

NOTE

To operate your iPod® through the vehicle's audio system, connect your Apple supplied USB cable to the USB port.

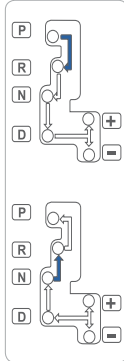
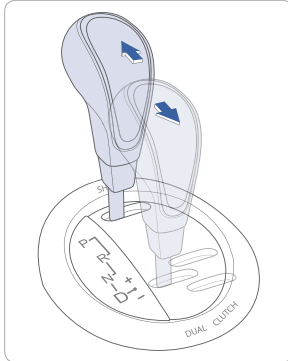


FEATURES AND CONTROLS

TRANSMISSIONS

Dual Clutch Transmission

Dual Clutch Transmission technology provides automatic shifting and excellent fuel economy based on manual transmission efficiency.



(➡) : Depress the brake pedal when shifting.

(⇄) : The shift lever can be shifted freely.

P : Park

R : Reverse

N : Neutral

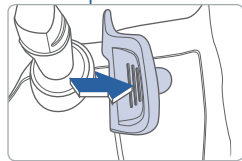
D : Drive

Ds : Sport Mode

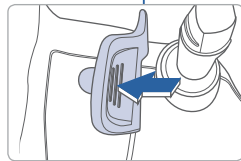
[+] : Sport Mode Upshift

[-] : Sport Mode Downshift

Paddle shifters



Press [-] to down shift



Press [+] to up shift

The paddle shifters operate when the shift lever is in the D position or the Sport Mode.

- When you pull the [+] or [-] paddle shifter once, the system changes from automatic mode to Shiftronic.
- When paddle shifters are no longer used the system changes back to automatic mode.

NOTE

If you pull the [+] and [-] paddle shifters at the same time, the transmission will not change gears.

NOTE - Dual Clutch Transmission characteristics

The new technology of the Dual Clutch Transmission is different than a traditional automatic or manual transmission:

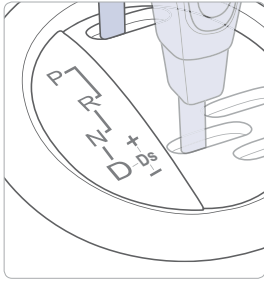
- The Dual Clutch Transmission is an automatically shifting manual transmission.
- Dual Clutch Transmission utilizes two clutches connected to a computer-controlled manual gearbox. It provides the convenience of a transmission that shifts automatically, with the efficiency of a manual transmission.
- When you turn the ignition on and off, you may hear clicking sounds as the transmission solenoids turn on and off, cycling through a self test. This is a normal sound for the Dual Clutch Transmission.
- When you stop on a hill, if you remove your foot from the brake pedal, the vehicle will remain stationary for approximately two seconds to prevent the vehicle from rolling backwards. If you depress the accelerator pedal during the two second interval, the vehicle will accelerate. If you wait more than two seconds, the vehicle will enter creep mode and may roll backwards if the hill is steep.

Caution

- You should always use the foot brake to hold the car on a hill until you are ready to drive. Using creep mode to hold the car on a hill may damage the clutch.
- An overload of the clutch is indicated by a shudder or vibration and a warning message. To prevent clutch damage, the clutch may release. If the clutch is released, apply the foot brake and wait a few of minutes before driving. Ignoring these warnings and wait time can lead to transmission damage.

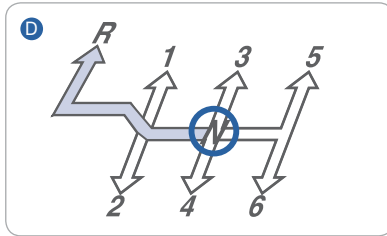
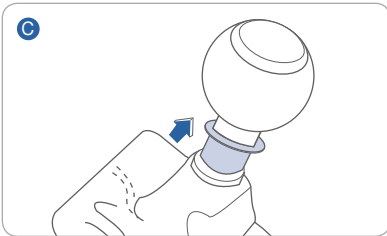
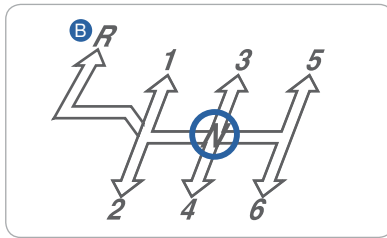
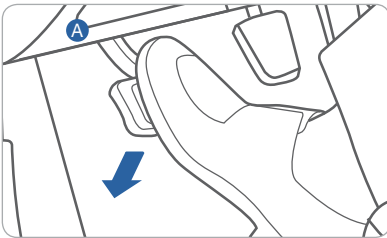


Sport Mode



Shift lever from D to DS to activate Sport mode. Sport mode is a recalibrated automatic mode that will hold gears longer and downshift at higher RPM for a more dynamic driving style. If you use the paddle shifters (or [+] or [-]) to enter the Sport Mode, you will stay in Sport Mode until the shift lever is returned to Drive, giving you full manual control.

Manual Transmission

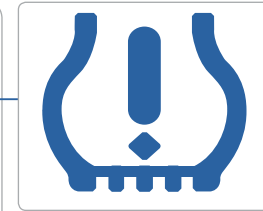


Shifting into Reverse

1. Fully depress the clutch **A**
2. Shift into Neutral **B**
3. Lift up on the reverse lock out ring **C**.
4. Shift into Reverse **D**



TIRE PRESSURE MONITORING SYSTEM (TPMS)



Low tire pressure indicator / TPMS malfunction indicator

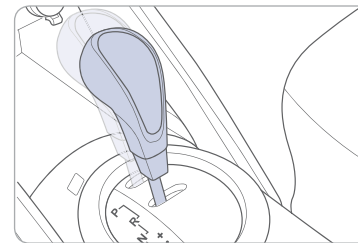
Low Tire Pressure Indicator

Illuminates if one or more of your tires is significantly under-inflated.

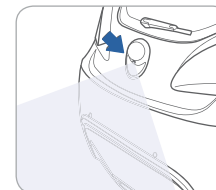
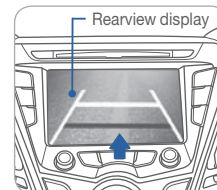
TPMS Malfunction Indicator

Blinks for approximately one minute then remains illuminated when there is a malfunction with the TPMS system. Have the system checked by an authorized Hyundai dealer.

REARVIEW CAMERA



The rearview camera will activate when the ignition switch is ON and the shift lever is in the R (Reverse) position.





FEATURES AND CONTROLS

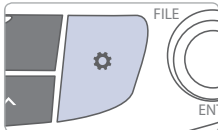
CLOCK ADJUSTMENT

With Standard Radio



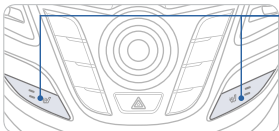
1. Press and hold **CLOCK** **A**.
2. Touch **▲** or **▼** to set the clock.
3. Touch "Done" when finished.

With Navigation



1. Press the **⚙️** button.
2. Touch the "Clock" button on screen.
3. Select GPS Time to On.

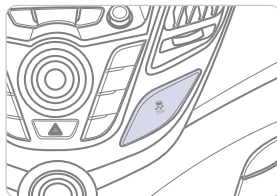
SEAT WARMER



Push desired switch to warm the seat.



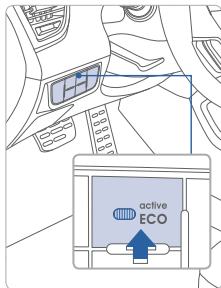
ELECTRONIC STABILITY CONTROL (ESC)



The ESC system is an electronic system designed to help the driver maintain vehicle control under adverse conditions.

Press **OFF** to turn ESC on or off.

ACTIVE ECO SYSTEM



Active ECO System helps improve fuel efficiency by controlling the engine and transmission.

Active ECO on - For optimal fuel efficiency

Active ECO off - For optimal performance and drivability.

When Active ECO system is activated, the behavior of the vehicle will change to a suppressed acceleration and delayed gear shifts under part throttle operation.

To improve your fuel efficiency:

- Accelerate at a moderate rate
- Keep tires inflated to the recommended pressure on the placard
- Be sure the wheels are properly aligned
- Avoid unnecessary braking
- Maintain steady cruising speeds whenever possible within the posted speed limit.

Key Websites

Hyundai website - www.hyundai.com

Hyundai owner website - www.myhyundai.com

Bluetooth phone compatibility - www.hyundaiusa.com/bluetooth

Blue Link - www.hyundaiusa.com/technology/bluelink

VELOSTER TURBO CUSTOMER DELIVERY CHECK LIST

HYUNDAI OWNER	DEALERSHIP NAME
SALES CONSULTANT	DATE
VIN	PREVIOUS VEHICLE

BEFORE DELIVERY

- CONFIRM "GOOD BATTERY" USING GR8 AND STAPLE TEST TICKET HERE
- SET TIRE PRESURE LF ___ RF ___ RR ___ LR ___
- VERIFY VEHICLE IS CLEAN, IN GOOD CONDITION, FREE OF CHIPS AND SCRATCHES · CLEAN WINDSHIELD AND BACK WINDOW
- ENSURE FLOORMATS ARE SNAPPED INTO PLACE

Sales Consultant	Date	Sales Manager	Date
Customer		@	Date
Email			