



2022

LC 500 / LC 500h

OWNER'S MANUAL QUICK GUIDE

Contents

The Quick Guide is not intended as a substitute for your *OWNER'S MANUAL*. We strongly encourage you to review the *OWNER'S MANUAL* and supplementary manuals so you will have a better understanding of your vehicle's capabilities and limitations.

Pictorial Index	3
For safe use	
Floor Mat Installation.....	11
Hybrid System (LC500h)	
Hybrid System.....	12
Entering and Exiting	
Keys.....	15
Smart Access System with Push-button Start.....	17
When Driving	
Front Seats.....	19
Driving Position Memory.....	20
Engine (Ignition) Switch (LC500)/Power (Ignition) Switch (LC500h).....	22
EV Drive Mode (LC500h).....	25
Automatic Transmission (LC500)/Hybrid Transmission (LC500h).....	26
Turn Signal Lever.....	30
Parking Brake.....	31
Brake Hold.....	33
Multi-information Display.....	34
Head-up Display.....	36
Headlights.....	39
AHB (Automatic High Beam).....	40
Windshield Wipers and Washer.....	42
Lexus Safety System +.....	43
LKA (Lane-Keeping Assist).....	44
Dynamic Radar Cruise Control with Full-Speed Range.....	45
Intuitive Parking Assist.....	50
Driving Mode Select Switch.....	51
BSM (Blind Spot Monitor).....	53
Tire Pressure Warning System.....	54
Active Rear Wing.....	56

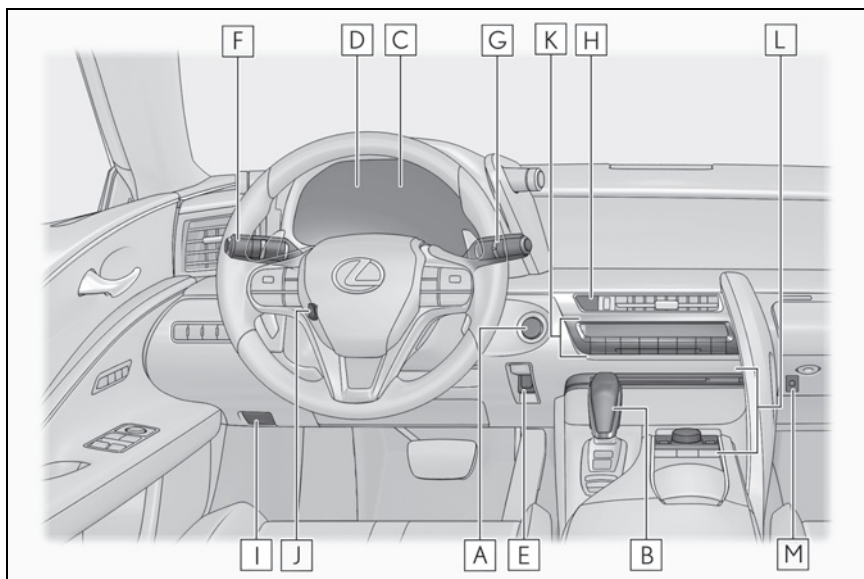
Driving Comfort	
Remote Touch.....	57
Energy Monitor/Consumption Screen.....	61
Navigation System*.....	64
Hands-free System For Cellular Phone*.....	66
Audio System*.....	70
Lexus Climate Concierge.....	77
Air Conditioning System*.....	78
Interior features	
Voice Command System*.....	82
USB/AUX Ports.....	89
Garage Door Opener.....	90
Lexus Enform	
Lexus Enform Safety Connect.....	94
Lexus Enform Remote.....	96
Lexus Enform Service Connect.....	97
Audio	
SiriusXM Satellite Radio.....	98
Opening and Closing	
Door Locks.....	99
What to do if...	
List of Warning/Indicator Lights.....	101
If the electronic key does not operate properly.....	105
If the engine <hybrid system> doesn't start.....	107

*: These features may be operated by Voice Command (See P.82)

Depending on specifications, the vehicle shown in the illustration may differ from your vehicle in terms of equipment.

Pictorial Index

Instrument panel

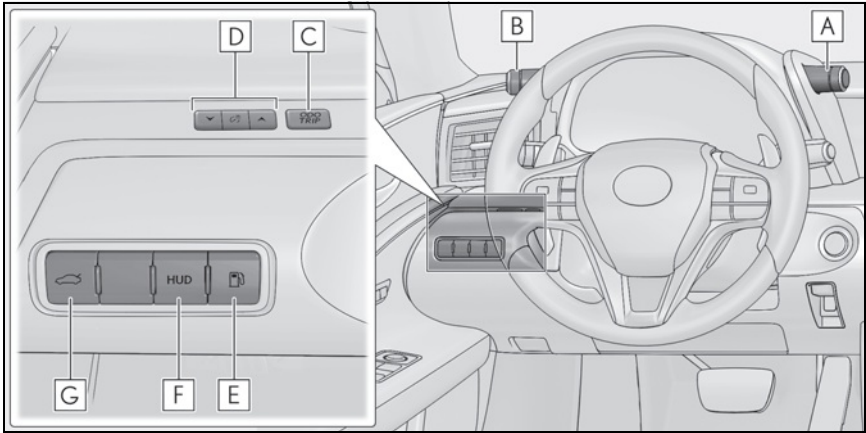


- A Engine switch <Power switch>** P.22
 - Starting the engine <hybrid system>/changing the mode P.22, 23
 - Emergency stop of the engine <hybrid system>P.24
 - When the engine <hybrid system> will not start.....P.106
 - Warning messages*
- B Shift lever** P.26
 - Changing the shift position.....P.26
 - Precautions against towing*
- C Meters***
 - Reading the meters/adjusting the instrument panel lights*
 - Warning lights/indicator lights P.101
 - When the warning lights come on*
- D Multi-information display** P.34
 - Display.....P.34
 - When the warning messages are displayed*

E	Parking brake switch	P.31
	Applying/releasing.....	P.31
	Precautions against winter season *	
	Warning buzzer/message *	
F	Turn signal lever	P.30
	Headlight switch	P.39
	Headlights/parking lights/tail lights/daytime running lights.....	P.39
	AHB (Automatic High Beam).....	P.40
G	Windshield wiper and washer switch	P.42
	Usage.....	P.42
	Adding washer fluid *	
	Warning messages *	
H	Emergency flasher switch *	
I	Hood lock release lever *	
J	Tilt and telescopic steering control switch *	
	Adjustment *	
	Driving position memory.....	P.20
K	Air conditioning system	P.78
	Usage.....	P.79
	Rear window defogger.....	P.78
L	Audio system	P.70
M	Trunk opener main switch *	

*: Refer to the "OWNER'S MANUAL".

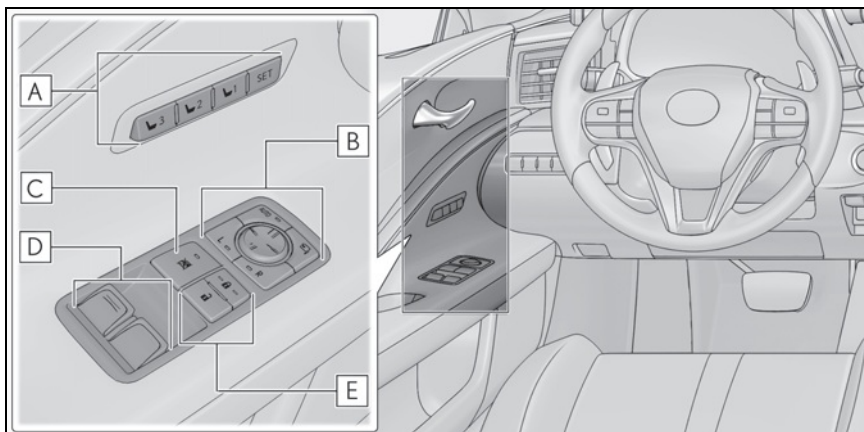
■ Switches



- A** Driving mode select switch P.51
- B** VSC OFF^{*1}/snow mode switch..... P.28
- C** Odometer/trip meter/trip meter reset button ^{*1}
- D** Instrument panel light control switches ^{*1}
- E** Fuel filler door opener switch ^{*1}
- F** HUD (Head-up display) switch ^{*2} P.36
- G** Trunk opener switch..... P.105

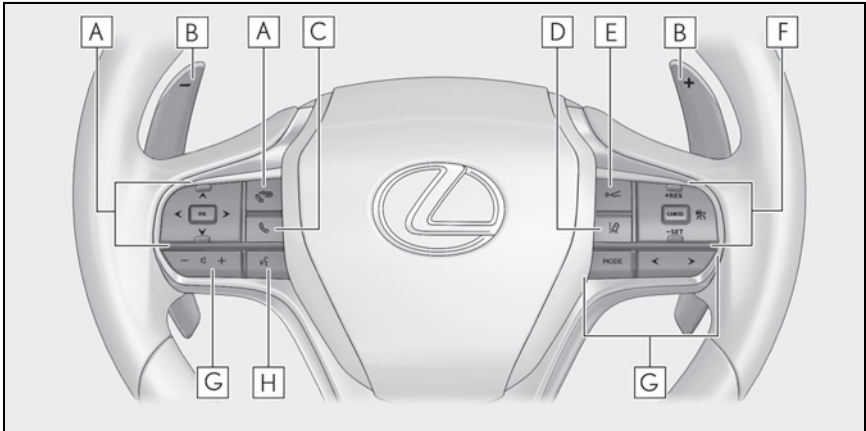
^{*1}: Refer to the "OWNER'S MANUAL".

^{*2}: If equipped

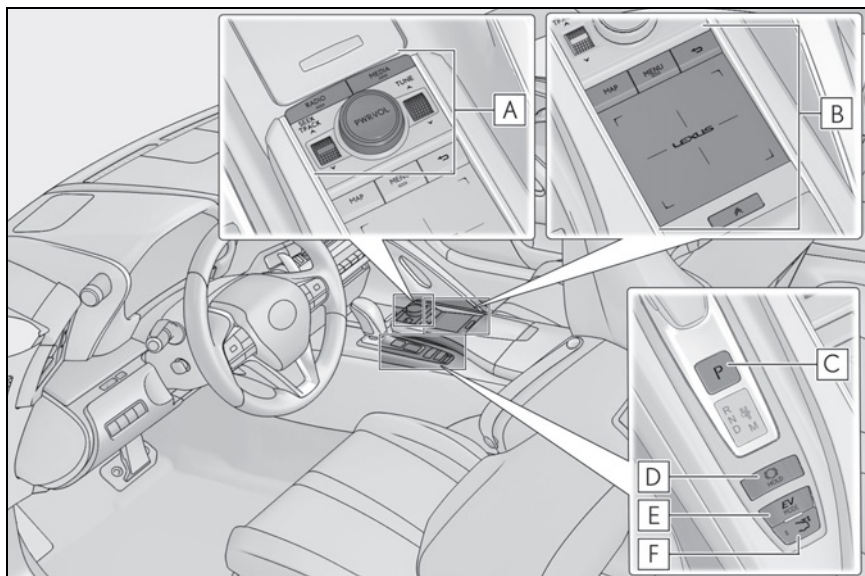


- A** Driving position memory switches P.20
- B** Outside rear view mirror switches *
- C** Window lock switch *
- D** Power window switches *
- E** Door lock switches P.99

*: Refer to the "OWNER'S MANUAL".



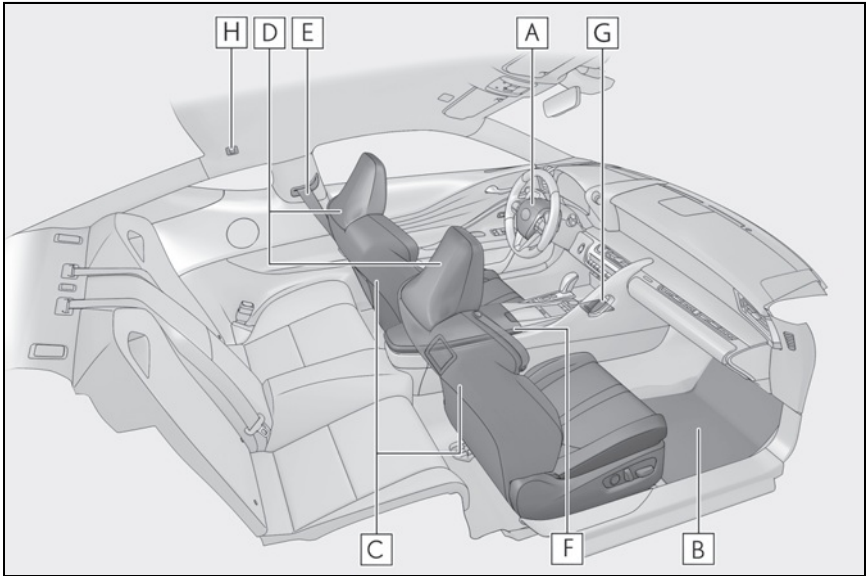
A	Meter control switches	P.34
B	Paddle shift switches	P.28, 29
C	Telephone switch.....	P.69
D	LKA (Lane-Keeping Assist) switch.....	P.44
E	Vehicle-to-vehicle distance switch.....	P.47
F	Cruise control switches	
	Dynamic radar cruise control with full-speed range.....	P.45
G	Audio remote control switches.....	P.71
H	Talk switch	P.69



A	Audio control switches	P.70
B	Remote Touch	P.57
C	P position switch.....	P.26
D	Brake hold switch	P.33
E	EV drive mode switch *	P.25
F	Active rear wing switch *	P.56

*: If equipped

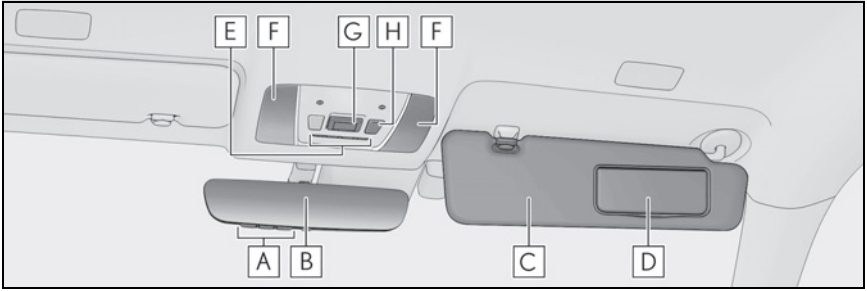
■ Interior



- A** SRS airbags *
- B** Floor mats P.11
- C** Front seats P.19
- D** Head restraints *
- E** Seat belts *
- F** Console box/auxiliary box *
- G** Cup holder *
- H** Coat hooks *

*: Refer to the "OWNER'S MANUAL".

■ Ceiling



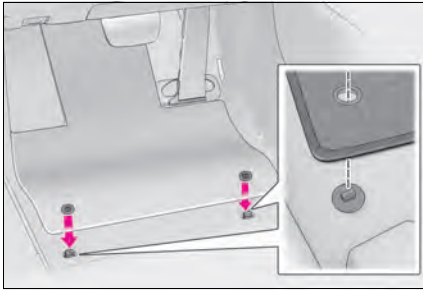
- A** Garage door opener buttons..... P.90
- B** Inside rear view mirror *1
- C** Sun visors *1
- D** Vanity mirrors *1
- E** Seat lights *1
Shift lever light *1
- F** Personal lights *1
- G** "SOS" button *2 P.94
- H** Door-linked personal light switch *1

*1: Refer to the "OWNER'S MANUAL".

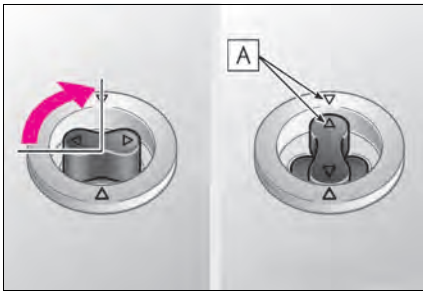
*2: If equipped

Floor Mat Installation

Use only floor mats designed specifically for vehicles of the same model and model year as your vehicle. Fix them securely in place onto the carpet.



- 1** Insert the retaining hooks (clips) into the floor mat eyelets.



- 2** Turn the upper knob of each retaining hook (clip) to secure the floor mats in place.

Always align the \triangle marks **A**.

The shape of the retaining hooks (clips) may differ from that shown in the illustration.

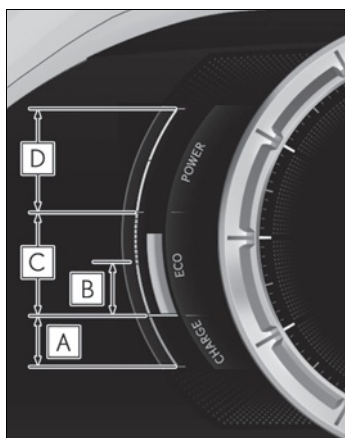
Hybrid System (LC500h)

Your vehicle is a hybrid vehicle. It has characteristics different from conventional vehicles. Be sure you are closely familiar with the characteristics of your vehicle, and operate it with care.

The hybrid system combines the use of a gasoline engine and an electric motor (traction motor) according to driving conditions, improving fuel efficiency and reducing exhaust emissions.

For details, refer to the “OWNER’S MANUAL”.

Hybrid System Indicator



A Charge area

Shows regeneration* status. Regenerated energy will be used to charge the hybrid battery (traction battery).

*: When used in this manual, “regeneration” refers to the conversion of energy created by the movement of the vehicle into electrical energy.

B Hybrid Eco area

Shows that gasoline engine power is not being used very often.

The gasoline engine will automatically stop and restart under various conditions.

C Eco area

Shows that the vehicle is being driven in an Eco-friendly manner.

By keeping the indicator needle within Eco area, more Eco-friendly driving can be achieved.

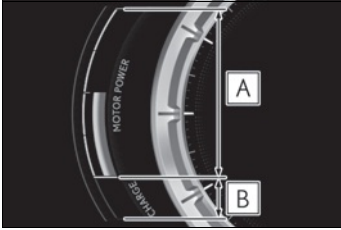
D Power area

Shows that an Eco-friendly driving range is being exceeded (during full power driving etc.)

In the following situation, the Hybrid System Indicator does not operate.

- The shift position is in other than D or M.
- The driving mode is other than Eco mode.

Motor power display



A Motor power area

Shows that the power of the motor assists the engine.

B Charge area

Shows regeneration* status. Regenerated energy will be used to charge the hybrid battery (traction battery).

*: When used in this manual, “regeneration” refers to the conversion of energy created by the movement of the vehicle into electrical energy.

Hybrid battery (traction battery) charge

If the shift position is in N, the hybrid battery (traction battery) will not be charged. To help prevent the battery from discharging, avoid leaving the N position selected for an extended period of time.

Regenerative braking

In the following situations, kinetic energy is converted to electric energy and deceleration force can be obtained in conjunction with the recharging of the hybrid battery (traction battery).

- The accelerator pedal is released while driving with the shift position in D or M.
- The brake pedal is depressed while driving with the shift position in D or M.

Sounds and vibrations specific to a hybrid vehicle

Because there is no engine sound or vibration, it is easy to mistake the hybrid vehicle for being off when it is actually still running, as indicated by the “READY” indicator being illuminated. For safety, make sure to always shift the shift position to P and apply the parking brake when parked.

The following sounds or vibrations may occur when the hybrid system is operating and are not a malfunction:

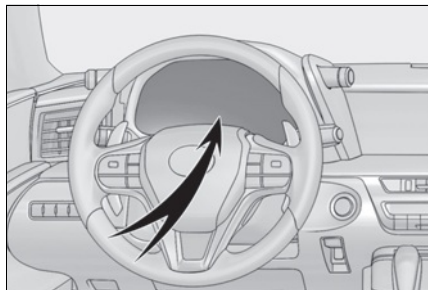
- Motor sounds may be heard from the engine compartment.
- Sounds may be heard from the hybrid battery (traction battery) behind the rear seats when the hybrid system starts or stops.
- Relay operating sounds such as a snap or soft clank will be emitted from the hybrid battery (traction battery), behind the rear seats, when the hybrid system is started or stopped.
- Sounds from the hybrid system may be heard when the trunk lid is open.
- Sounds may be heard from the transmission when the gasoline engine starts or stops, when driving at low speeds, or during idling.
- Engine sounds may be heard when accelerating sharply.
- Sounds may be heard due to regenerative braking when the brake pedal is depressed or as the accelerator pedal is released.
- Vibration may be felt when the gasoline engine starts or stops.
- Cooling fan sounds may be heard from the air intake vents under the rear seats.

Running out of fuel

When the vehicle has run out of fuel and the hybrid system cannot be started, refuel the vehicle with at least enough gasoline to make the low fuel level warning light go off. If there is only a small amount of fuel, the hybrid system may not be able to start. (The standard amount of fuel is about 3.3 gal. [12.6 L, 2.8 Imp.gal.], when the vehicle is on a level surface. This value may vary when the vehicle is on a slope. Add extra fuel when the vehicle is inclined.)

Hybrid warning message

A message is automatically displayed when a malfunction occurs in the hybrid system or an improper operation is attempted.



If a warning message is shown on the multi-information display, read the message and follow the instructions.

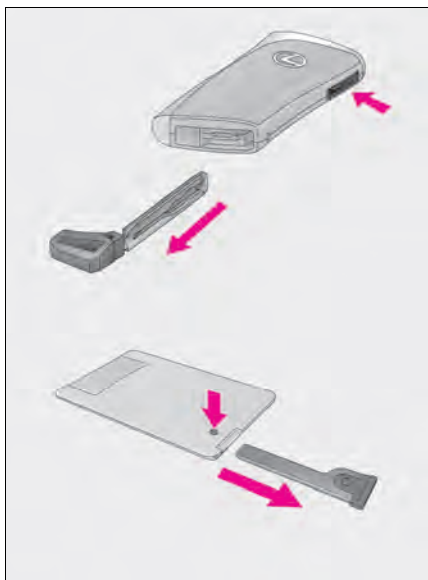
Keys

Electronic key



- Smart access system with push-button start (→P.17)
- Wireless remote control

Mechanical key

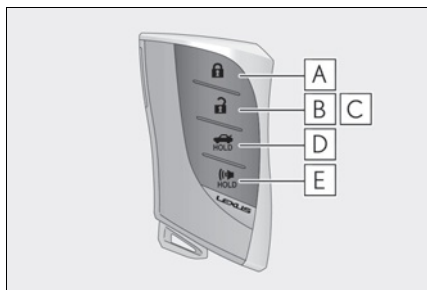


To take out the mechanical key, push the release button and take the key out.

The mechanical key can only be inserted in one direction, as the key only has grooves on one side. If the key cannot be inserted in a lock cylinder, turn it over and re-attempt to insert it.

After using the mechanical key, store it in the electronic key. Carry the mechanical key together with the electronic key. If the electronic key battery is depleted or the entry function does not operate properly, you will need the mechanical key.

Wireless remote control



- A** Locks the doors
- B** Unlocks the doors
- C** Opens the windows (press and hold)*
- D** Opens the trunk
- E** Sounds the alarm

*: This setting must be customized at your Lexus dealer.

Smart Access System with Push-button Start

The following operations can be performed simply by carrying the electronic key (including the card key) on your person, for example in your pocket. The driver should always carry the electronic key.

For details on starting the engine <hybrid system>, see page 22.

Unlocking and locking the doors from the outside



- 1 Push the depression on the front edge of the driver's door handle to unlock the door. Push the depression on the front edge of the passenger's door handle to unlock both side doors.*

The outside door handles will be extended.

The extended outside door handles are automatically retracted in approximately 60 seconds.

The doors cannot be unlocked for 3 seconds after the doors are locked.

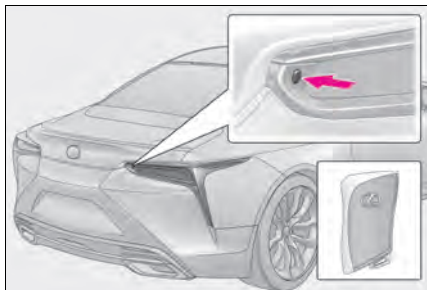
*: The door unlock settings can be changed.

- 2 Push the rear edge of the extended door handle to lock the doors.

If the outside door handles are extended, they will be retracted.

After locking the doors, check that the door is securely locked with the door lock indicator. (→P.99)

Opening the trunk



Press the button.

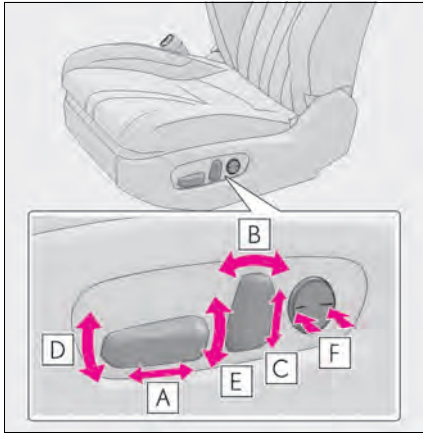
When both side doors are unlocked using one of the following methods, the trunk can be opened without the electronic key:

- Entry function
- Wireless remote control
- Door lock switches
- Automatic door unlocking system
- Mechanical key

For details on what to do when the electronic key does not operate properly, see page 105.

Front Seats

Adjustment procedure



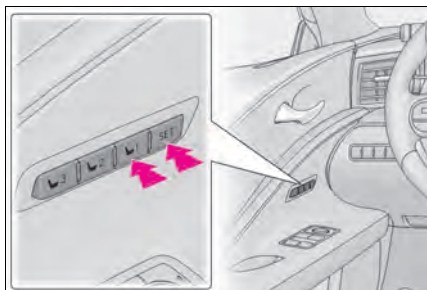
- A** Seat position adjustment
- B** Seatback angle adjustment
- C** Head restraint height adjustment (if equipped)
- D** Seat cushion (front) angle adjustment
- E** Vertical height adjustment
- F** Lumbar support adjustment

Driving Position Memory

This feature automatically adjusts the positions of the driver's seat, steering wheel, outside rear view mirrors and head-up display (if equipped) to suit your preferences.

Recording a driving position into memory

- 1 Turn the engine switch <power switch> to IGNITION ON mode <ON mode>.
- 2 Check that the shift position is in P.
- 3 Adjust the driver's seat, steering wheel, outside rear view mirrors and head-up display to the desired positions.

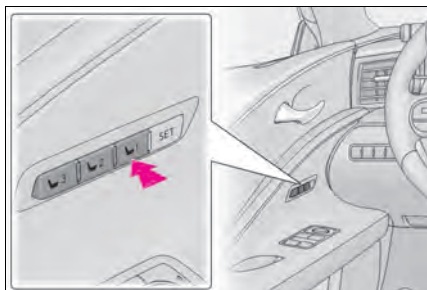


- 4 While pressing the "SET" button, or within 3 seconds after the "SET" button is pressed, press button "1", "2" or "3" until the buzzer sounds.

If the selected button has already been preset, the previously recorded position will be overwritten.

Recalling a driving position

- 1 Turn the engine switch <power switch> to IGNITION ON mode <ON mode>.
- 2 Check that the shift position is in P.



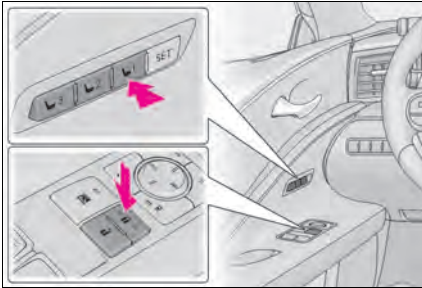
- 3 Press one of the buttons for the driving position you want to recall until the buzzer sounds.

Memory recall function (driver's side only)

Each electronic key (including a card key) can be registered to recall your preferred driving position.

■ Registering procedure

- 1 Turn the engine switch <power switch> to IGNITION ON mode <ON mode>.
- 2 Check that the shift position is in P.
- 3 Recall the driving position that you want to record.



- 4 While pressing the recalled button, press and hold the door lock switch (either lock or unlock) until the buzzer sounds.

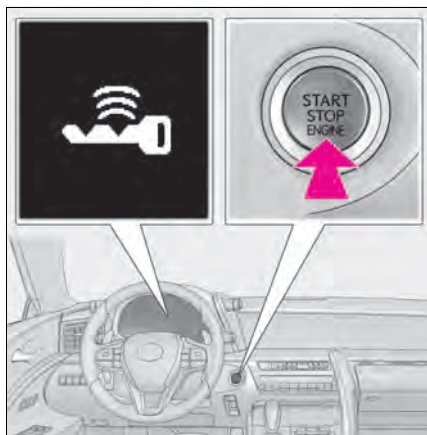
If the button could not be registered, the buzzer sounds continuously for approximately 3 seconds.

Engine (Ignition) Switch (LC500)/Power (Ignition) Switch (LC500h)

Performing the following operations when carrying the electronic key on your person starts the engine <hybrid system> or changes engine switch <power switch> modes.

The illustrations are for LC500, and some design may differ for LC500h.

Starting the engine <hybrid system>



- 1 Press the parking brake switch to check that the parking brake is set. (→P.31)

The parking brake indicator will come on.

- 2 Firmly depress the brake pedal.



and a message will be displayed on the multi-information display. If it is not displayed, the engine <hybrid system> cannot be started.

LC500h: When the shift position is N, the hybrid system cannot start.

Shift the shift position to P when starting the hybrid system.

- 3 Press the engine switch <power switch> shortly and firmly.

When operating the engine switch <power switch>, one short, firm press is enough. It is not necessary to press and hold the switch.

LC500: The engine will crank until it starts or for up to 30 seconds, whichever is less. Continue depressing the brake pedal until the engine is completely started.

LC500h: If the "READY" indicator turns on, the hybrid system will operate normally. Continue depressing the brake pedal until the "READY" indicator is illuminated.

The engine <hybrid system> can be started from any engine switch <power switch> mode.

- 4 LC500h: Check that the "READY" indicator is illuminated.

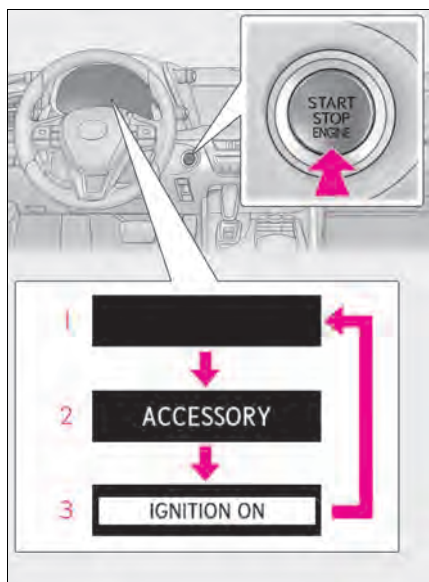
The vehicle will not move when the "READY" indicator is off.

Stopping the engine <hybrid system>

- 1 Stop the vehicle completely.
- 2 If the parking brake is in manual mode, set the parking brake. (→P.31)
- 3 Press the P position switch.
- 4 Press the engine switch <power switch>.
- 5 Check that "ACCESSORY" or "IGNITION ON" is not shown on the meter.

Changing engine switch <power switch> modes

Modes can be changed by pressing the engine switch <power switch> with the brake pedal released. (The mode changes each time the switch is pressed.)

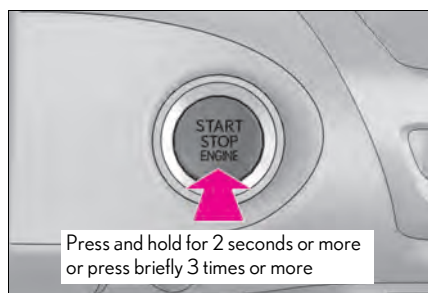


- 1 Off
The emergency flashers can be used.
- 2 ACCESSORY mode
Some electrical components such as the audio system can be used.
"ACCESSORY" will be displayed on the meter.
- 3 IGNITION ON mode <ON mode>
All electrical components can be used.
"IGNITION ON" will be displayed on the meter.

If your vehicle has to be stopped in an emergency

Only in an emergency, such as if it becomes impossible to stop the vehicle in the normal way, stop the vehicle using the following procedure:

- 1** Steadily step on the brake pedal with both feet and firmly depress it.
Do not pump the brake pedal repeatedly as this will increase the effort required to slow the vehicle.
- 2** Shift the shift position to N.
- ▶ If the shift position is shifted to N**
- 3** After slowing down, stop the vehicle in a safe place by the road.
- 4** Stop the engine <hybrid system>.
- ▶ If the shift position cannot be shifted to N**
- 3** Keep depressing the brake pedal with both feet to reduce vehicle speed as much as possible.

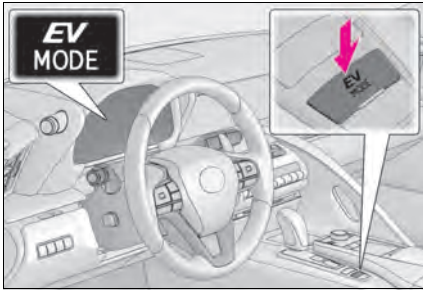


- 4** To stop the engine <hybrid system>, press and hold the engine switch <power switch> for 2 consecutive seconds or more, or press it briefly 3 times or more in succession.

- 5** Stop the vehicle in a safe place by the road.

EV Drive Mode (LC500h)

In EV drive mode, electric power is supplied by the hybrid battery (traction battery), and only the electric motor (traction motor) is used to drive the vehicle.

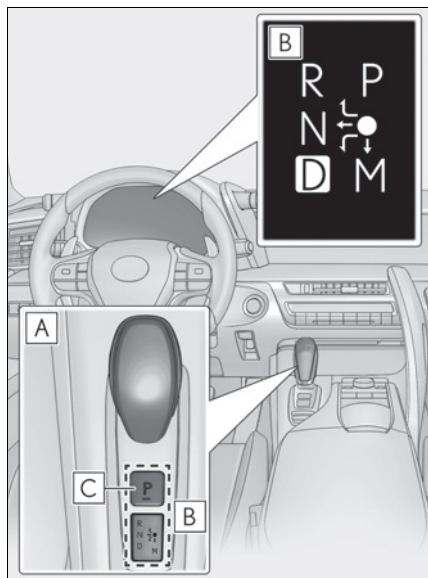


Turns EV drive mode on/off

When EV drive mode is turned on, the EV drive mode indicator will come on. Pressing the switch when in EV drive mode will return the vehicle to normal driving (using the gasoline engine and electric motor [traction motor]).

Automatic Transmission (LC500)/Hybrid Transmission (LC500h)

Shift position display and how to change the shift position



A Shift lever

Operate the shift lever gently and securely in the direction of the arrow on the shift position indicator.

To shift to N, slide the shift lever in the direction of the arrow and hold it.

Release the shift lever after each shifting operation to allow it to return to its regular position (●).

Shifting to M is only possible when the shift position is in D.

When shifting from P to N, D or R, from N, D, M or R to P, from D or M to R, or from R to D, ensure that the brake pedal is being depressed and the vehicle is stationary.

B Shift position indicator

Meter display:

The current shift position is highlighted.

When any shift position other than D or M is selected, the arrow toward M and M position indicator are displayed in gray.

Shift lever display:

The current shift position is illuminated.

When selecting the shift position, make sure that the shift position has been changed to the desired position by checking the shift position indicator provided on the instrument cluster.

C P position switch

Fully stop the vehicle and set the parking brake, and then press the P position switch.

When the shift position is changed to P, the switch illuminates.

Check that the shift position indicator shows P.

Shift position purpose and functions

Shift position	Objective or function
P	Parking the vehicle/starting the engine <hybrid system>
R	Reversing
N	Neutral (Condition in which the power is not transmitted)
D	Normal driving ^{*1}
M	M mode driving ^{*2} (→P.29)

^{*1}: To improve fuel efficiency and reduce noise, set the shift position in D for normal driving. You can choose gear range suitable for your driving situation by operating the paddle shift switches.

^{*2}: Any gear range can be fixed when driving in M mode.

When the engine switch is changed to ACCESSORY mode with the shift position held in N

- 1 Operate the shift lever and change the shift position to N when the engine is running.
- 2 Return the shift lever to its regular position (●).
- 3 Operate the shift lever to N and hold it there until the buzzer sounds.
- 4 Press the engine switch within 5 seconds after the buzzer sounds.

The engine switch will be set to ACCESSORY mode with the shift position in N.*

Make sure to check that the buzzer sounds and "Holding N Push P Switch When Done" is displayed on the multi-information display.

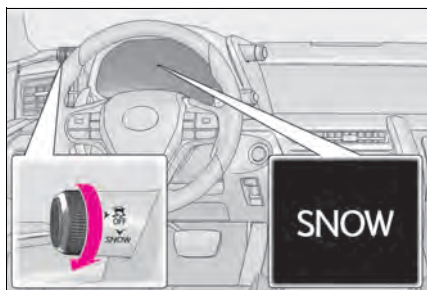
*: To keep this state, do not operate the engine switch. If the engine switch is operated repeatedly, the engine switch will turn off after the shift position has automatically changed to P.

Selecting the driving mode

■ Driving mode

→P.51


■ Snow mode



Snow mode can be selected to suit the conditions when driving on slippery road surfaces, such as on snow.

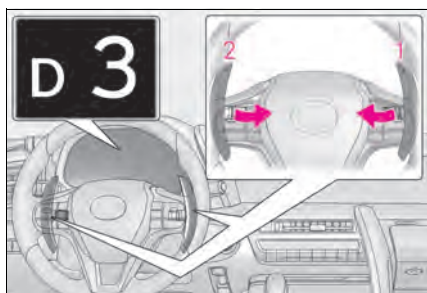
Turn the  switch backward.

The snow mode indicator comes on.

Turn the  switch backward again to return to normal mode.

Selecting shift ranges in the D position

When the “-” paddle shift switch is operated, the shift range switches to a range that enables engine braking force that is suitable to driving conditions. When the “+” paddle shift switch is operated, the shift range switches to a range that is one range higher than the current range.



1 Upshifting

2 Downshifting

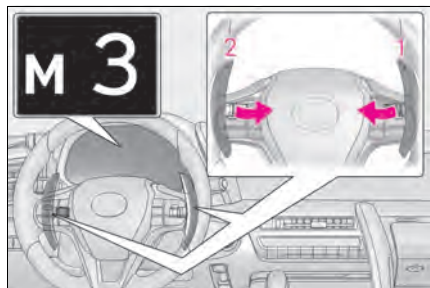
The selected shift range, from D1 to D10, will be displayed in the meter.

Meter display	Function
D2 - D10	A gear in the range between D1 and the selected shift range is automatically chosen depending on vehicle speed and driving conditions
D1	Setting the shift range at D1

A lower shift range will provide greater engine braking forces than a higher shift range.

Selecting gears in the M position

To enter M mode, shift the shift position to M. Gears can be selected by operating the paddle shift switches, allowing you to drive in the gear of your choosing.



1 Upshifting

2 Downshifting

The gear changes once every time the paddle shift switch is operated.

The selected gear, from M1 to M10, will be fixed and displayed in the meter.

When in the M position, the gear will not change unless the paddle shift switches are operated.

However, even when in the M position, the gears will be automatically changed in the following situation:

● LC500

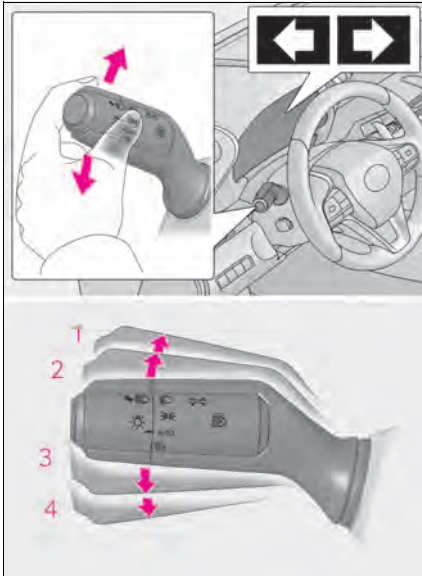
- When vehicle speed drops (downshift only).
- When it is necessary to protect the engine or automatic transmission when the engine coolant temperature is low, the automatic transmission fluid temperature is high or low or other reasons.

● LC500h

- When vehicle speed drops (downshift only).
- When vehicle speed increases (upshift only).
- When the accelerator pedal is firmly depressed.
- When it is necessary to protect the transmission when the transmission fluid temperature is high or low, or other reasons.

Also, the gear will not shift when the vehicle speed is low, even if an upshift operation is performed.

Turn Signal Lever



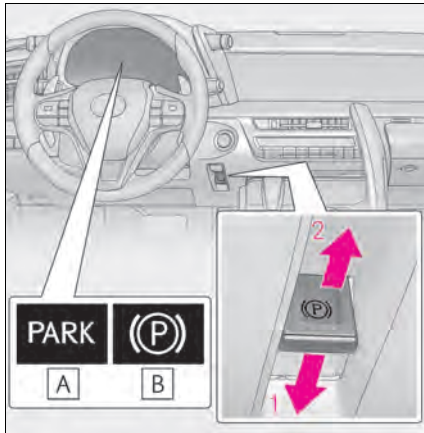
- 1** Right turn
- 2** Lane change to the right (move the lever partway and release it)
The right hand signals will flash 3 times.
- 3** Lane change to the left (move the lever partway and release it)
The left hand signals will flash 3 times.
- 4** Left turn

Parking Brake

The parking brake can be set or released automatically or manually.

Using the manual mode

The parking brake can be set and released manually.



A U.S.A.

B Canada

- 1** Push the switch to set the parking brake

The parking brake indicator light will turn on.

Press and hold the parking brake switch if an emergency occurs and it is necessary to operate the parking brake while driving.

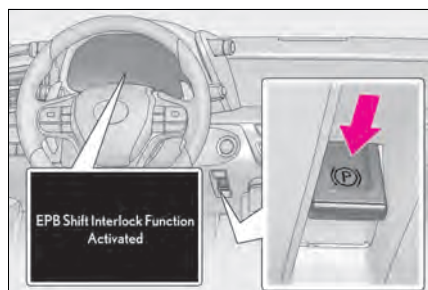
- 2** Pull the switch to release the parking brake

- Operate the parking brake switch while depressing the brake pedal.
- Using the parking brake automatic release function, the parking brake can be released by depressing the accelerator pedal. When using this function, slowly depress the accelerator pedal.

Make sure that the parking brake indicator light turn off.

Turning the automatic mode on

In automatic mode, the parking brake can be set or released automatically according to shift lever operation. Also, even in automatic mode, the parking brake can be set or released manually.



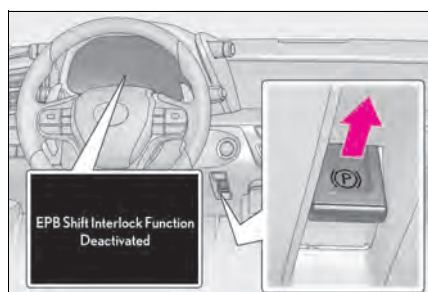
While the vehicle is stopped, press and hold the parking brake switch until a message is shown on the multi-information display

When the automatic mode is turned on, the parking brake operates as follows.

- When the shift position is shifted from P, the parking brake will be released, and the parking brake indicator light turn off.
- When the shift position is shifted to P, the parking brake will be set, and the parking brake indicator light turn on.

Operate the shift lever and P position switch with the vehicle stopped and the brake pedal depressed.

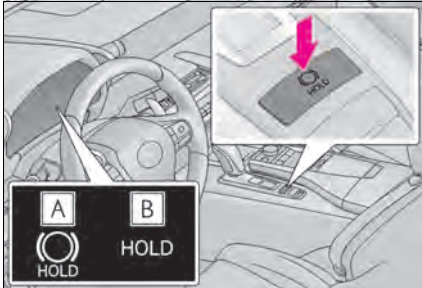
Turning the automatic mode off



While the vehicle is stopped, pull and hold the parking brake switch until a message is shown on the multi-information display

Brake Hold

The brake hold system keeps the brake applied when the shift position is in D, M or N with the system on and the brake pedal has been depressed to stop the vehicle. The system releases the brake when the accelerator pedal is depressed with the shift position in D or M to allow smooth start off.



Turns the brake hold system on

The brake hold standby indicator **A** (green) comes on. While the system is holding the brake, the brake hold operated indicator **B** (yellow) comes on.

Multi-information Display

The multi-information display presents the driver with a variety of vehicle data.

Display

► When the main meter is in the center position

Displays various drive information on the main meter.

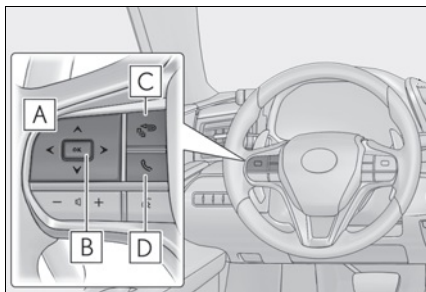
Some of the contents which are displayed when the main meter is in the side position cannot be displayed.

► When the main meter is in the side position



Selecting a menu icon displays a variety of vehicle data or allows vehicle settings to be customized.

Changing the meter display



- A** < / > : Switch menu
▲ / ▼ : Change displayed content, scroll up/down the screen and move the cursor up/down
- B** Press: Enter/Set
Press and hold: Reset
- C** Return to the previous screen and move the main meter
- D** Call sending/receiving and history display

Linked with the hands-free system, sending or receiving call is displayed. For details regarding the hands-free system, refer to "NAVIGATION SYSTEM OWNER'S MANUAL".

Menu icons



Drive information

Select to display various drive data.



Navigation system-linked display

Select to display the following navigation system-linked information.

- Route guidance
- Compass display



Audio system-linked display

Select to enable selection of an audio source or track on the meter using the meter control switches.



Driving assist system information

Select to display the dynamic radar cruise control with full-speed range/LKA (Lane-Keeping Assist) information, when the system is used. (→P.44, 45)



Warning message display

Select to display warning messages and measures to be taken if a malfunction is detected.



Settings display

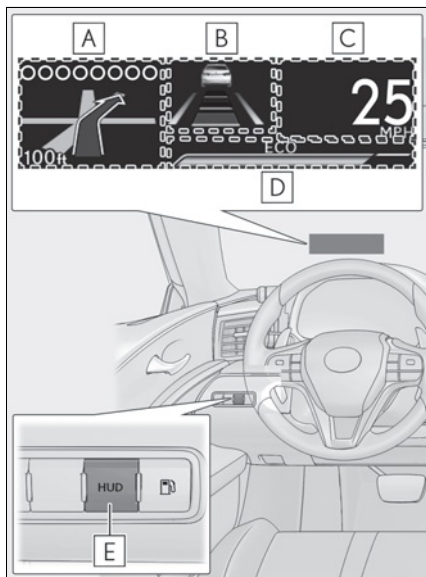
Select to change the meter display settings

If a problem is detected in any of the vehicle's systems, a warning message is shown on the multi-information display.

Head-up Display (if equipped)

The head-up display is linked to the meters and navigation system and projects a variety of information in front of the driver, such as the current vehicle speed and route guidance to a set destination.

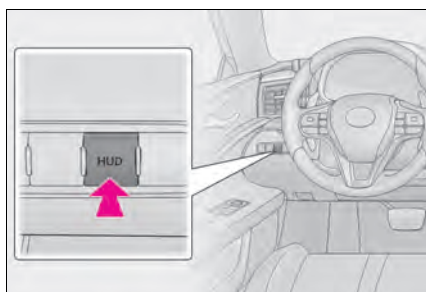
System components



- A** Navigation system-linked display area
- B** Driving assist system status display area
- C** Vehicle speed display
- D** Information display area
- E** HUD (Head-up display) switch (→P.36)

Using the head-up display

Enabling/Disabling the head-up display



Pressing the switch turns the head-up display on/off.

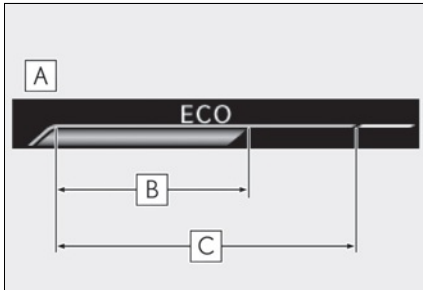
■ Changing settings of the head-up display

Select  on the multi-information display to change the following settings:

- Display brightness/position
Select to adjust the brightness and position of the head-up display.
- Eco Driving Indicator/tachometer (LC500)
Select to display Eco Driving Indicator, tachometer or no content.
- Hybrid System Indicator/motor power display/tachometer (LC500h)
Select to display Hybrid System Indicator, tachometer or no content.
Motor power display can be displayed when Hybrid System Indicator is selected while the driving mode (→P.51) is other than the Eco drive mode.
- Display content
Select to enable/disable the following items:
 - Route guidance to destination
 - Driving assist system status
 - Compass
 - Audio system operation status
- Display angle
Select to adjust the angle of the head-up display.

Eco Driving Indicator/tachometer (LC500)

■ Eco Driving Indicator



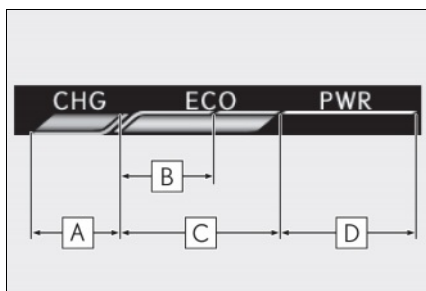
- A** Eco Driving Indicator Zone Display
- B** Eco driving ratio based on acceleration
- C** Zone of Eco driving
Displayed content is the same as that displayed on the multi-information display (Eco Driving Indicator).

■ Tachometer

Displays the engine speed in revolutions per minute.

Hybrid System Indicator/motor power display/tachometer (LC500h)

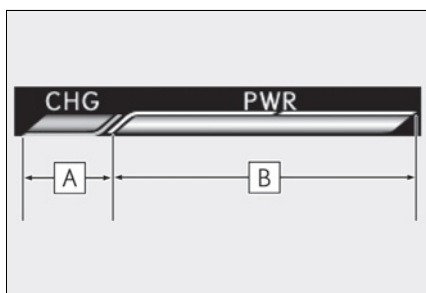
Hybrid System Indicator



- A** Charge area
- B** Hybrid Eco area
- C** Eco area
- D** Power area

Displayed content is the same as that displayed on the meter (Hybrid System Indicator). For details, refer to P.12.

Motor power display



- A** Charge area
- B** Power area

Displayed content is the same as that displayed on the meter (Motor power display). For details, refer to P.13.

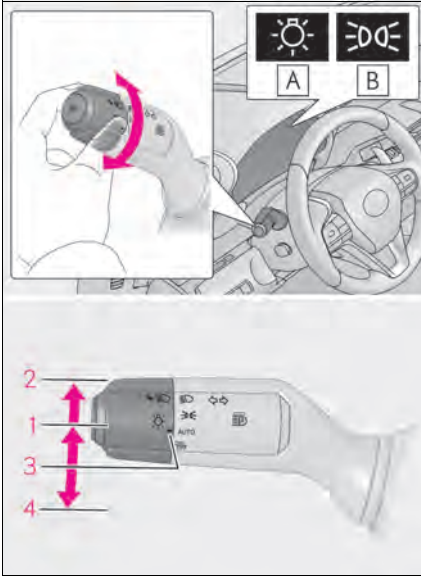
Tachometer

Displays the engine speed in revolutions per minute.

The head-up display may seem dark and hard to see when viewed through sunglasses, especially polarized sunglasses.

Adjust the brightness of the head-up display or remove your sunglasses.

Headlights



A U.S.A.

B Canada

1 ☀️ The side marker, parking, tail, license plate, instrument panel lights, and daytime running lights turn on.

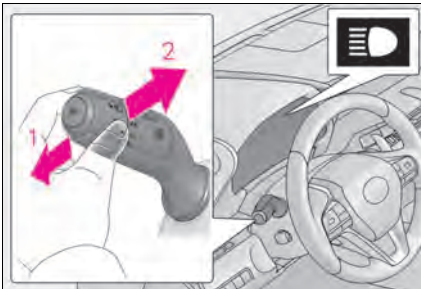
2 🚗 The headlights and all the lights listed above (except daytime running lights) turn on.

3 AUTO The headlights, daytime running lights and all the lights listed above turn on and off automatically.

4 DRL OFF Off*

*: U.S.A. only

Turning on the high beam headlights



1 With the headlights on, push the lever away from you to turn on the high beams.

Pull the lever toward you to the center position to turn the high beams off.

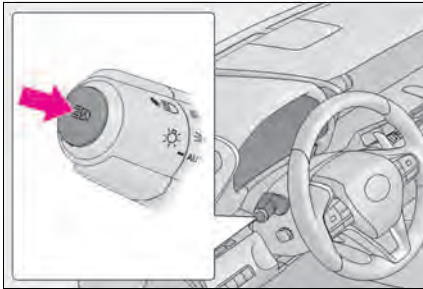
2 Pull the lever toward you and release it to flash the high beams once.

You can flash the high beams with the headlights on or off.

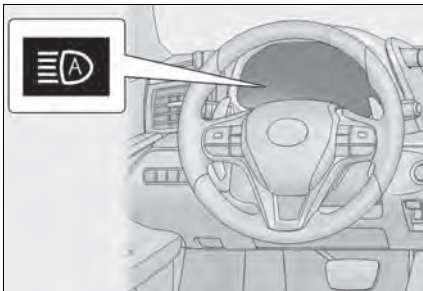
AHB (Automatic High Beam)


The Automatic High Beam uses an in-vehicle front camera to assess the brightness of streetlights, the lights of vehicle ahead, etc., and automatically turns the high beam on or off as necessary.

Activating the Automatic High Beam system



- 1 Press the Automatic High Beam switch.

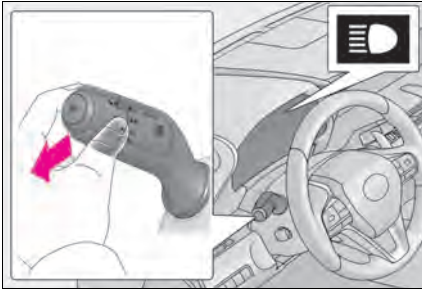


- 2 Turn the headlight switch to the  or AUTO position.

The AHB indicator will come on when the system is operating.

Turning the high beam on/off manually

■ Switching to high beam

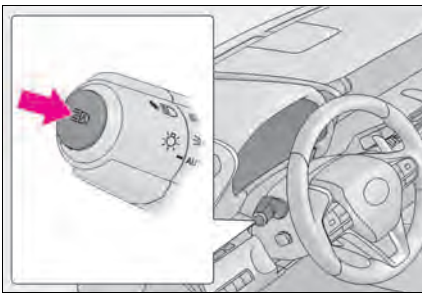


Push the lever away from you.

The AHB indicator will turn off and the high beam indicator will turn on.

Pull the lever to its original position to activate the Automatic High Beam system again.

■ Switching to low beam

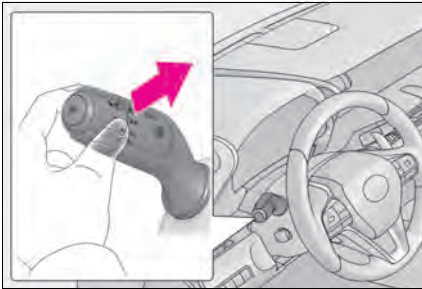


Press the Automatic High Beam switch.

The AHB indicator will turn off.

Press the switch to activate the Automatic High Beam system again.

■ Temporarily switching to the low beams



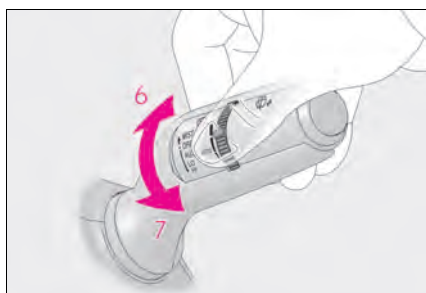
Pull the lever toward you and then return it to its original position.

The high beams remain on while the lever is pulled toward you, however, after the lever is returned to its original position, the low beams remain on for a certain amount of time. Afterwards, the Automatic High Beam will be activated again.

Windshield Wipers and Washer



- 1** OFF (U.S.A.) or ○ (Canada)
Off
- 2** AUTO Rain-sensing wiper operation
- 3** LO (U.S.A.) or ▼ (Canada)
Low speed wiper operation
- 4** HI (U.S.A.) or ▼ (Canada)
High speed wiper operation
- 5** MIST (U.S.A.) or △ (Canada)
Temporary operation



When "AUTO" is selected, the sensor sensitivity can be adjusted by turning the switch ring.

- 6** Increases the sensitivity
- 7** Decreases the sensitivity



- 8**  Washer/wiper dual operation

Pulling the lever operates the wipers and washer.

The wipers will automatically operate a couple of times after the washer squirts.

(After operating several times, the wipers operate once more time after a short delay to prevent dripping. However, the dripping prevention does not operate while the vehicle is moving.)

Lexus Safety System +

The Lexus Safety System + consists of the following drive assist systems and contributes to a safe and comfortable driving experience:

Driving assist system

■ PCS (Pre-Collision System)

The pre-collision system uses a radar sensor and front camera to detect vehicles and pedestrians in front of your vehicle. When the system determines that the possibility of a frontal collision with a vehicle or pedestrian is high, a warning operates to urge the driver to take evasive action and the potential brake pressure is increased to help the driver avoid the collision. If the system determines that the possibility of a frontal collision with a vehicle or pedestrian is extremely high, the brakes are automatically applied to help avoid the collision or help reduce the impact of the collision.

■ LKA (Lane-Keeping Assist)

→P.44

■ AHB (Automatic High Beam)

→P.40

■ Dynamic radar cruise control with full-speed range

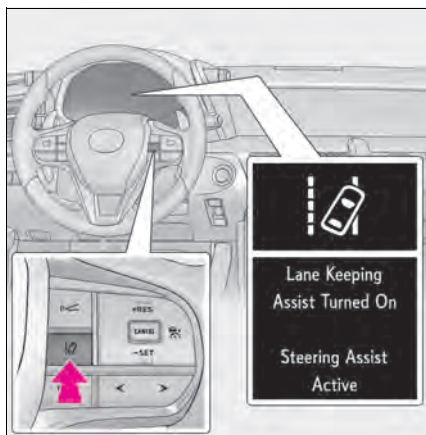
→P.45

LKA (Lane-Keeping Assist)

When driving on highways and freeways with white or yellow lines, this function alerts the driver when the vehicle might depart from its lane and provides assistance by operating the steering wheel to keep the vehicle in its lane. Furthermore, the system also provides steering assistance when dynamic radar cruise control with full-speed range is operating to keep the vehicle in its lane.

The LKA system recognizes visible white or yellow lines with the front camera on the upper portion of the front windshield.

Turning the LKA system on



Press the LKA switch to turn the LKA system on.

The LKA indicator illuminates and a message is displayed on the multi-information display.

Press the LKA switch again to turn the LKA system off.

When the LKA system is turned on or off, operation of the LKA system continues in the same condition the next time the engine <hybrid system> is started.

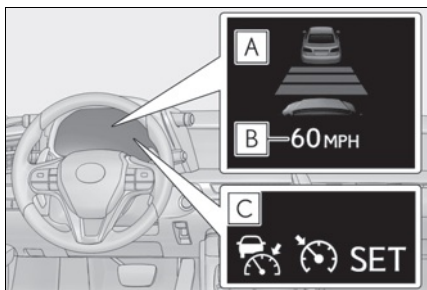
Dynamic Radar Cruise Control with Full-Speed Range

In vehicle-to-vehicle distance control mode, the vehicle automatically accelerates, decelerates and stops to match the speed changes of the preceding vehicle even if the accelerator pedal is not depressed. In constant speed control mode, the vehicle runs at a fixed speed.

Use the dynamic radar cruise control with full-speed range on freeways and highways.

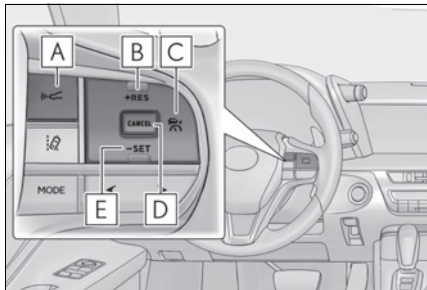
System Components

■ Meter display



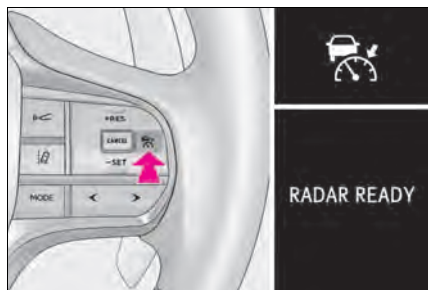
- A** Display
- B** Set speed
- C** Indicators

■ Operation switches



- A** Vehicle-to-vehicle distance switch
- B** "+RES" switch
- C** Cruise control main switch
- D** Cancel switch
- E** "-SET" switch

Setting the vehicle speed (vehicle-to-vehicle distance control mode)

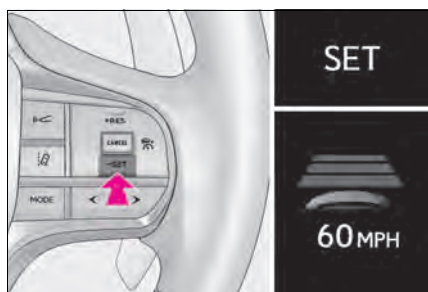


- 1 Press the cruise control main switch to activate the cruise control.

Radar cruise control indicator will come on and a message will be displayed on the multi-information display.

Press the switch again to deactivate the cruise control.

If the cruise control main switch is pressed and held for 1.5 seconds or more, the system turns on in constant speed control mode.



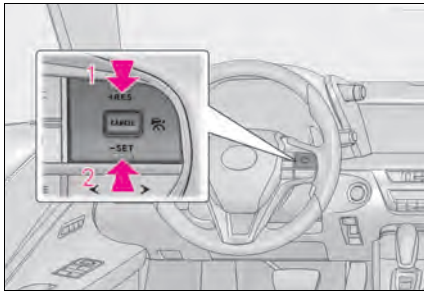
- 2 Accelerate or decelerate, with accelerator pedal operation, to the desired vehicle speed (at or above approximately 30 mph [50 km/h]) and press the "-SET" switch to set the speed.

Cruise control "SET" indicator will come on.

The vehicle speed at the moment the switch is released becomes the set speed.

If the switch is operated while the vehicle speed is below approximately 30 mph (50 km/h) and a preceding vehicle is present, the set speed will be adjusted to approximately 30 mph (50 km/h).

Adjusting the set speed



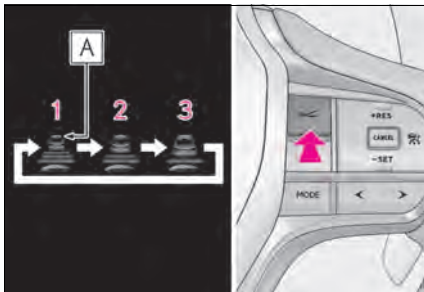
1 Increases the speed
(Except when the vehicle has been stopped by system control in vehicle-to-vehicle distance control mode)

2 Decreases the speed

Fine adjustment: Press the switch.

Large adjustment: Press and hold the switch to change the speed, and release when the desired speed is reached.

Changing the vehicle-to-vehicle distance (vehicle-to-vehicle distance control mode)



Pressing the switch changes the vehicle-to-vehicle distance as follows:

1 Long

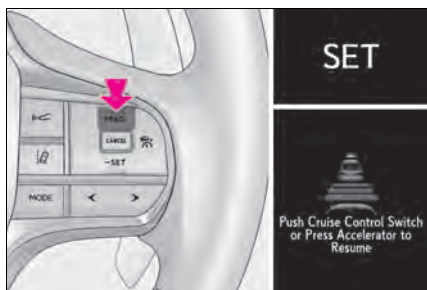
2 Medium

3 Short

The vehicle-to-vehicle distance is set automatically to long mode when the engine switch <power switch> is turned to IGNITION ON mode <ON mode>.

If a vehicle is running ahead of you, the preceding vehicle mark **A** will also be displayed.

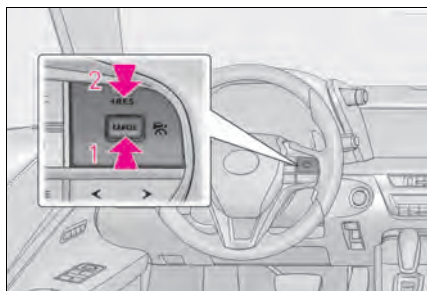
Resuming follow-up cruising when the vehicle has been stopped by system control (vehicle-to-vehicle distance control mode)



After the vehicle ahead of you starts off, press the “+RES” switch.

Your vehicle will also resume follow-up cruising if the accelerator pedal is depressed after the vehicle ahead of you starts off.

Canceling and resuming the speed control



- 1 Pressing the cancel switch cancels the speed control.

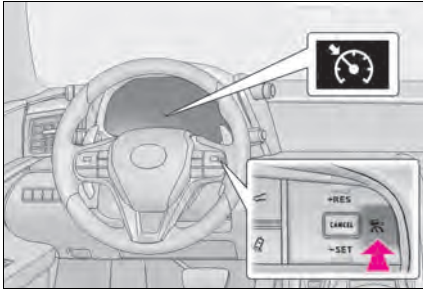
The speed control is also canceled when the brake pedal is depressed.

(When the vehicle has been stopped by system control, depressing the brake pedal does not cancel the setting.)

- 2 Pressing the “+RES” switch resumes the cruise control and returns vehicle speed to the set speed.

However, when a vehicle ahead is not detected, cruise control does not resume when the vehicle speed is approximately 25 mph (40 km/h) or less.

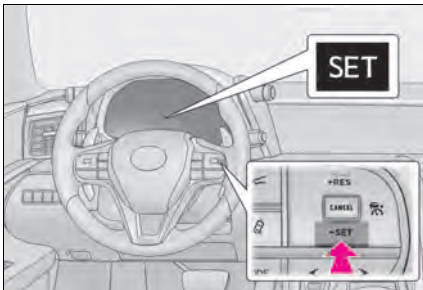
Selecting constant speed control mode



- 1 With the cruise control off, press and hold the cruise control main switch for 1.5 seconds or more.

Immediately after the switch is pressed, the radar cruise control indicator will come on. Afterwards, it switches to the cruise control indicator.

Switching to constant speed control mode is only possible when operating the switch with the cruise control off.



- 2 Accelerate or decelerate, with accelerator pedal operation, to the desired vehicle speed (at or above approximately 25 mph [40 km/h]) and press the "-SET" switch to set the speed.






Cruise control "SET" indicator will come on.

The vehicle speed at the moment the switch is released becomes the set speed.

Intuitive Parking Assist (if equipped)

The distance from your vehicle to nearby obstacles when parallel parking or maneuvering into a garage is measured by the sensors and communicated via the displays and a buzzer. Always check the surrounding area when using this system.

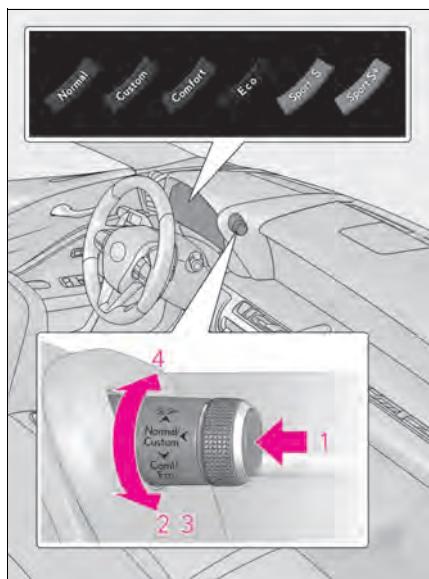
Turning intuitive parking assist on/off

- 1 Press  or  of the meter control switches, and select .
- 2 Press  or  of the meter control switches, and select "Parking Assist", and press "OK".

When the intuitive parking assist turn on, the intuitive parking assist indicator comes on to inform the driver that the system is operational.

Driving Mode Select Switch

The driving modes can be selected to suit driving condition.



1 Normal mode/Custom mode

Normal mode and custom mode are selected by pressing the driving mode select switch. Each time the switch is pressed, the driving mode changes between normal mode and custom mode. When custom mode is selected, the “Custom” indicator comes on.

Press the switch to change the driving mode to normal mode when not in normal mode.

• Normal mode

Provides an optimal balance of fuel economy, quietness, and dynamic performance. Suitable for city driving.

When the shift position is in D, an appropriate gear for sporty driving may automatically be selected according to driver performance and driving conditions.

• Custom mode

Allows you to drive with the power train, chassis and air conditioning system functions set to your preferred settings.

Custom mode settings can only be changed on the drive mode customization display of the Center Display. (→P.58)

2 Comfort mode

By controlling the suspension, riding comfort is further enhanced. Suitable for city driving.

When not in comfort mode and the driving mode select switch is turned forward, the “Comfort” indicator comes on.

3 Eco drive mode

Helps the driver accelerate in an eco-friendly manner and improve fuel economy through moderate throttle characteristics and by controlling the operation of the air conditioning system (heating/cooling).

When in comfort mode, if the driving mode select switch is turned forward, the “Eco” indicator comes on.

4 Sport mode

- SPORT S mode

Controls the transmission and engine to provide quick, powerful acceleration. This mode is suitable for when agile driving response is desired, such as when driving on roads with many curves.

When not in SPORT S mode, if the driving mode select switch is turned backward, the "Sport S" indicator comes on.

- SPORT S+ mode

Provides earlier downshift timing than SPORT S mode in order to maintain a high engine speed and provides faster gear changes. This mode also changes the steering feel, suspension control and VDIM* control, making it suitable for powerful sporty driving.

When in SPORT S mode, if the driving mode select switch is turned backward, the "Sport S+" indicator comes on.

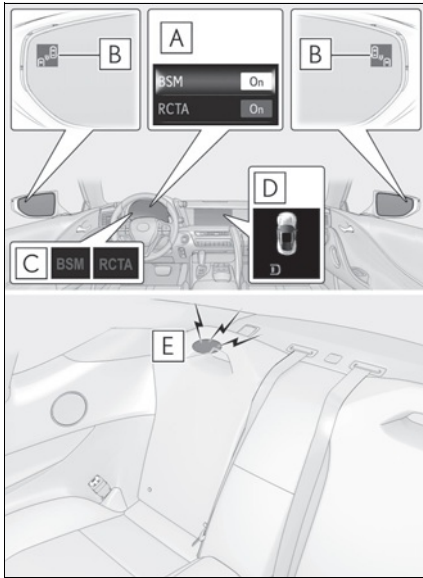
*: For details, refer to the "OWNER'S MANUAL".

BSM (Blind Spot Monitor)

The Blind Spot Monitor is a system that has 2 functions;

- The BSM (Blind Spot Monitor) function
Assists the driver in making a decision when changing lanes
- The RCTA (Rear Cross Traffic Alert) function
Assists the driver when backing up

These functions use same sensors.



A Multi-information display

Turning the BSM function/RCTA function on/off.

The RCTA function is available when the BSM function is on.

B Outside rear view mirror indicators

BSM function:

When a vehicle is detected in a blind spot of the outside rear view mirrors or approaching rapidly from behind into a blind spot, the outside rear view mirror indicator on the detected side will illuminate. If the turn signal lever is operated toward the detected side, the outside rear view mirror indicator will flash.

RCTA function:

When a vehicle approaching from the right or left at the rear of the vehicle is detected, both outside rear view mirror indicators will flash.

C BSM indicator/RCTA indicator

When the BSM function/RCTA function is turned on, the indicator comes on.

D Monitor screen display (RCTA function only)

If a vehicle approaching from the right or left at the rear of the vehicle is detected, the RCTA icon for the detected side will be displayed on the monitor screen. This illustration shows an example of a vehicle approaching from the left at the rear of the vehicle.

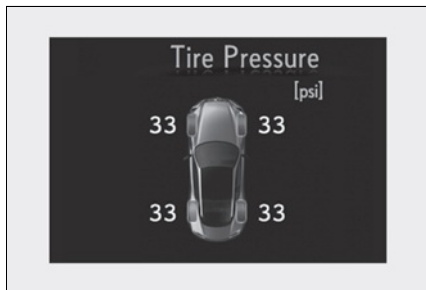
E RCTA buzzer (RCTA function only)

If a vehicle approaching from the right or left at the rear of the vehicle is detected, a buzzer will sound. The buzzer also sounds for approximately 1 second immediately after the BSM function is operated to turn the system on.

Tire Pressure Warning System

Your vehicle is equipped with a tire pressure warning system that uses tire pressure warning valves and transmitters to detect low tire inflation pressure before serious problems arise.


The tire inflation pressure display function

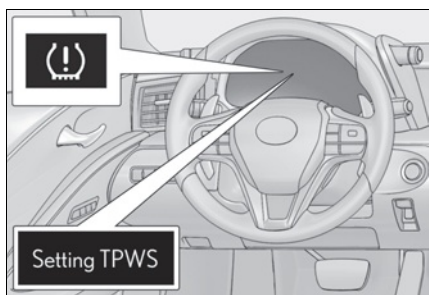


The tire pressure detected by the tire pressure warning system can be displayed on the multi-information display.

The illustration used is intended as an example, and may differ from the image that is actually displayed on the multi-information display.

Initializing the tire pressure warning system

- 1 Turn the engine switch <power switch> to IGNITION ON mode <ON mode>.
- 2 Press **<** or **>** of the meter control switches and select .
- 3 Press **▲** or **▼** of the meter control switches and select "Vehicle Settings", then press "OK".
- 4 Press **▲** or **▼** of the meter control switches and select "TPWS SET", then press "OK".
- 5 Press **▲** or **▼** of the meter control switches and select "Set tire pressure". Then press and hold "OK" until the tire pressure warning light starts blinking.



A message is displayed on the multi-information display. Also, "--" is displayed for inflation pressure of each tire on the multi-information display while the tire pressure warning system determines the position.

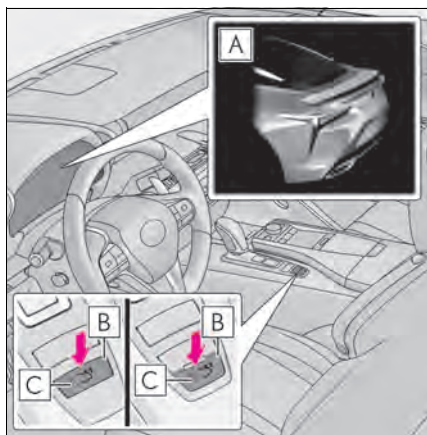
- 6 Drive the vehicle at approximately 25 mph (40 km/h) or more for approximately 10 to 30 minutes.

When initialization is complete, the inflation pressure of each tire will be displayed on the multi-information display.

Active Rear Wing (if equipped)

The vehicle is equipped with an active rear wing that operates automatically while the vehicle is being driven. This active rear wing enhances aerodynamic performance, especially at high speeds, contributing to a more stable ride.

The active rear wing can be controlled manually using a switch.



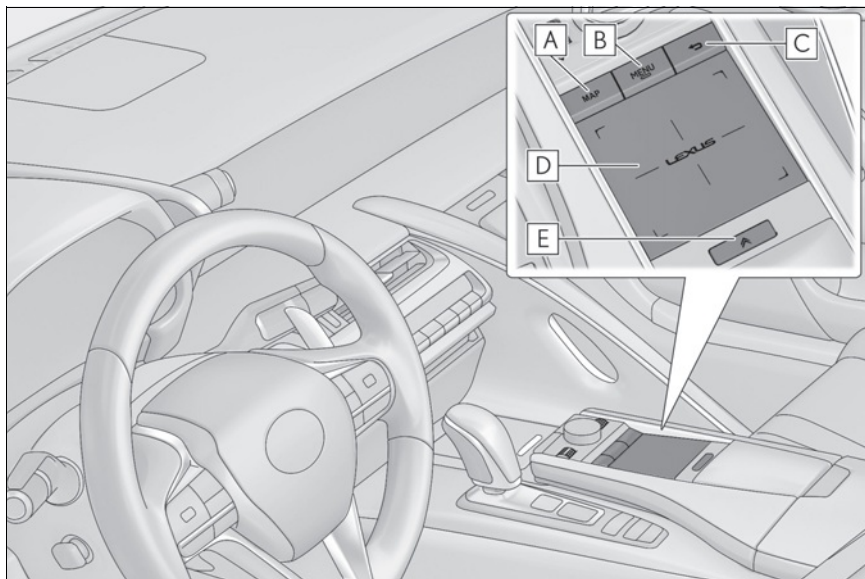
- A** Multi-information display (→P.34)
Displays the status of the active rear wing.
- B** Active rear wing switch
Operates the active rear wing manually.
- C** Indicator
Illuminates when the active rear wing is raised and turns off when it is retracted.

Remote Touch

The navigation/multimedia system is primarily operated by the Remote Touch.

Remote Touch is the name for the device that includes the “MAP” button, “MENU” button, back button, touchpad and sub function button.

Names and operations of each part



A “MAP” button

Press to display the current location.

B “MENU” button

Press to display the menu screen.

C Back button


Press to display the previous screen.

D Touchpad

Operate to select/confirm a button on the screen.

Operate to scroll list screens and enlarge/shrink the map.











E Sub function button

When  is displayed on the screen, a function screen assigned to the screen can be displayed.

Menu screen

Press the “MENU” button on the Remote Touch to display the menu screen.



Switch	Function
	Select to display the destination screen. (→P.64)
	Select to display the audio control screen. (→P.70)
	Select to display the hands-free control screen. (→P.66)
	Select to display the “Apps” screen. *1,2
  	When an Apple CarPlay/Android Auto connection is established and this button displays “Apple CarPlay”/“Android Auto”, select to display the home screen of Apple CarPlay/Android Auto. *1,2
	Select to display the information screen. (→P.61, 62)
	Select to display the setup screen. *2,3
	Select to display the air conditioning control screen. (→P.79)

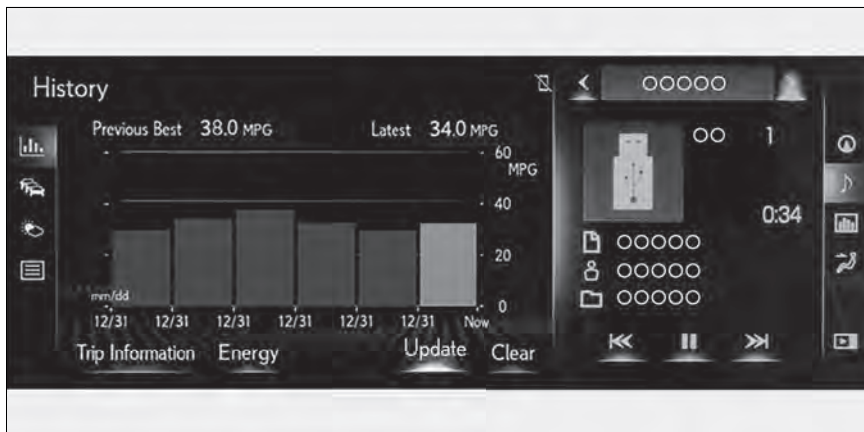
*1: This function is not made available in some countries or areas.

*2: Refer to the “NAVIGATION SYSTEM OWNER’S MANUAL”.

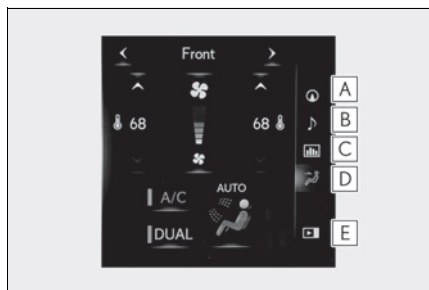
*3: Refer to the “OWNER’S MANUAL”.

Split-screen display

Different information can be displayed on the left and right of the screen. For example, air conditioning system screen can be displayed and operated while the fuel consumption information screen is being displayed. The large screen on the left of the display is called the main display, and the small screen to the right is called the side display.



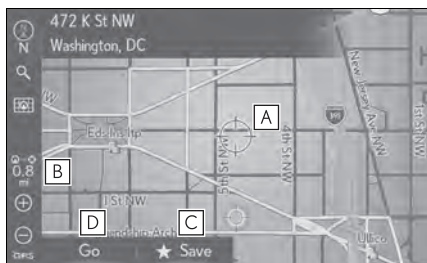
Side display



The following functions can be displayed and operated on the side display.

- A** Navigation system (→P.64)
- B** Audio (→P.73, 74, 75, 76)
- C** Vehicle information (→P.63)
- D** Air conditioning system (→P.81)
- E** Show/hide the side display

Map scroll operation



Select the desired point on the map screen.

Move the desired point on the center of the map screen.

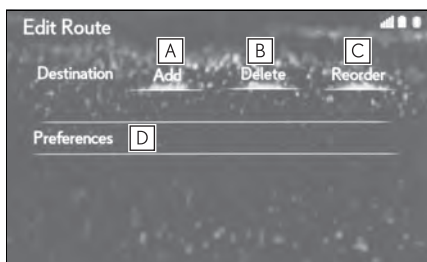
- A** Cursor mark
- B** Distance from the current position to the cursor mark
- C** Select to register as a memory point.
- D** Select to set as a destination.

Press the “MAP” button on the Remote Touch to return to the current position.

Editing route

Destinations can be added, reordered or deleted, and conditions for the route to the destination can be changed.

1 Select “Edit Route”.



2 Select the desired item.

- A** Select to add destinations.
- B** Select to delete destinations.
- C** Select to reorder destinations.
- D** Select to set route preferences.

Some functions are unavailable while the vehicle is in motion. Refer to the “NAVIGATION SYSTEM OWNER’S MANUAL”.

Energy Monitor/Consumption Screen

You can view the status of your hybrid system (LC500h) and fuel consumption information on the multi-information display and Center Display.

The screen can be displayed on the side display. For details, refer to the "OWNER'S MANUAL".

Energy monitor (LC500h)

■ Display procedure

▶ Multi-information display

Press **<** or **>** of the meter control switches and select **i**, and then press **▲** or **▼** to select the energy monitor display.

▶ Center Display

Press the "MENU" button on the Remote Touch, then select **i** on the menu screen.
If the "Trip information" or "History" screen is displayed, select "Energy".

■ Reading the display

The arrows will appear in accordance with the energy flow. When there is no energy flow, arrows will not be displayed.

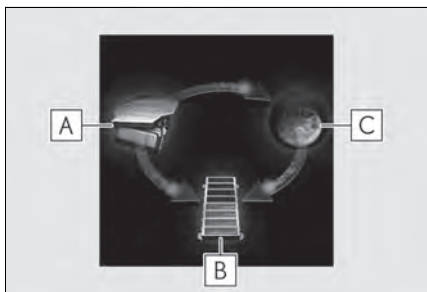
The color of the arrows will change as follows

Blue: When the hybrid battery (traction battery) is regenerated or charged.

Yellow: When the hybrid battery (traction battery) is in use.

Red: When the gasoline engine is in use.

▶ Multi-information display



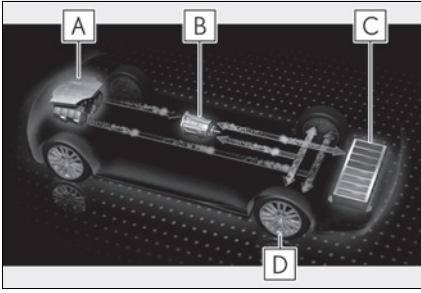
The image shows all the arrows as an example. The actual display will vary depending on conditions.

A Gasoline engine

B Hybrid battery (traction battery)

C Tires


► Center Display



The image shows all the arrows as an example. The actual display will vary depending on conditions.

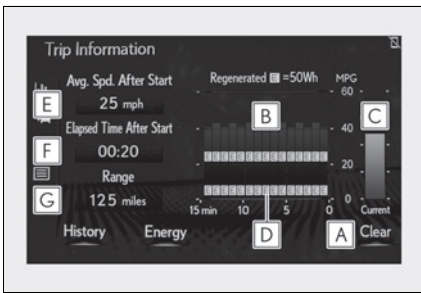
- A** Gasoline engine
- B** Electric motor (traction motor)
- C** Hybrid battery (traction battery)
- D** Tires

Consumption

Press the “MENU” button on the Remote Touch, then select  on the menu screen, and then select “Trip Information” or “History”.

■ Trip information

If a screen other than “Trip Information” is displayed, select “Trip Information”.



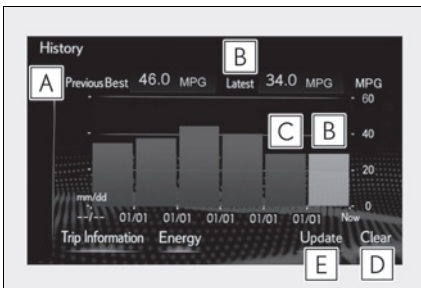
- A** Resetting the consumption data
- B** Fuel consumption in the past 15 minutes
- C** Current fuel consumption
- D** Regenerated energy in the past 15 minutes (LC500h)

One symbol indicates 50 Wh. Up to 5 symbols are shown.

- E** Average vehicle speed since the engine <hybrid system> was started.
- F** Elapsed time since the engine <hybrid system> was started.
- G** Cruising range

■ History

If a screen other than “History” is displayed, select “History”.

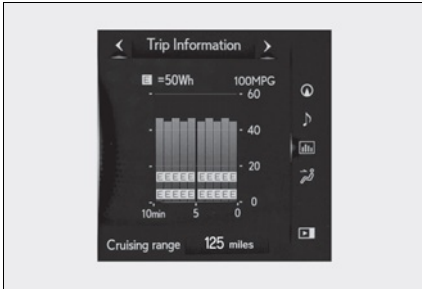


- A** Best recorded fuel consumption
- B** Latest fuel consumption
- C** Previous fuel consumption record
- D** Resetting the history data
- E** Updating the latest fuel consumption data

Using the side display

Vehicle information can be displayed on the side display.

Select  or  to display the desired screen.




- Trip information (type A/type B)
- History
- Energy monitor (LC500h)

Navigation System


Registering home



- 1 Press the "MAP" button on the Remote Touch.
 - 2 Select .
 - 3 Select "Home".
 - 4 Select "Yes".
 - 5 Select "Address" or "Current Location" to search for your home.
 - 6 Select "OK".
- Registration of home is complete.

Destination search


■ Searching by address

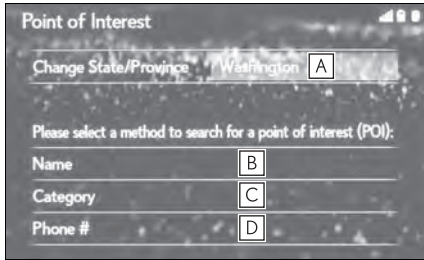
- 1 Display the destination search screen by either operation:
 - "MAP" button → 
 - "MENU" button → "Destination"
- 2 Select "Address".
If a state (province) has not been selected yet, "State/Province" screen is displayed.
- 3 Enter a house number and select "Search".
"Change State/Province": Select to change the search area.
- 4 Enter a street name and select "Search".
- 5 Select the desired street name.
- 6 Enter a city name and select "Search".
- 7 Select the desired city name.
If multiple locations with the same address exist, the address list screen will be displayed.
Select the desired address.

■ Searching by point of interest

There are 3 methods to search for a destination by Points of Interest.

1 Display the destination search screen by either operation:

- “MAP” button → 
 - “MENU” button → “Destination”
- 2 Select “Point of Interest”.

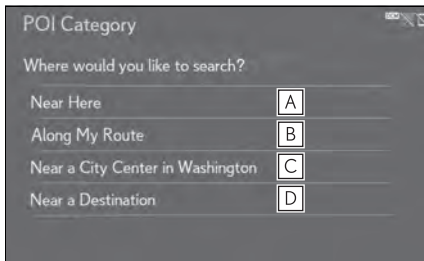


▶ Searching by name (B)

- 4 Select “Name”.
- 5 Enter a POI name and select “Search”.
- 6 Select the desired POI.

▶ Searching by category (C)

- 4 Select “Category”.



6 Select the desired POI category.

7 Select the desired POI.

▶ Searching by phone number (D)

- 4 Select “Phone #”.
- 5 Enter a phone number and select “OK”.

3 Select the desired search method.

- A Select to change the search area.
- B Select to search by name.
- C Select to search by category.
- D Select to search by phone number.

5 Select the desired search point.

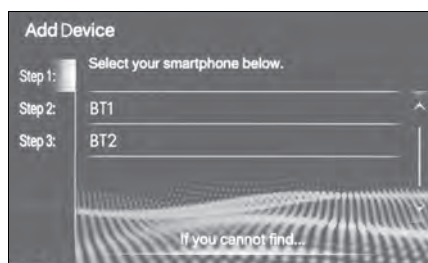
- A Select to search for POIs near your current position.
- B Select to search for POIs along the set route.
- C Select to search for POIs near a specific city center.
- D Select to search for POIs near a destination. When more than 1 destination has been set, a list will be displayed on the screen. Select the desired destination.

Hands-free System For Cellular Phone

Registering/connecting Bluetooth® device

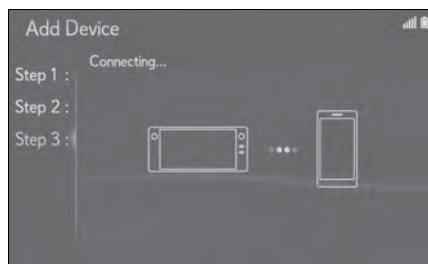
To use the hands-free system, it is necessary to register a Bluetooth® phone with the system. Refer to <http://www.lexus.com/MobileLink> to find approved Bluetooth® phones for this system.

- 1 Turn the Bluetooth® connection setting of your cellular phone on.
- 2 Press the “MENU” button on the Remote Touch.
- 3 Select “Phone”.
- 4 Select “Yes” to register a phone.



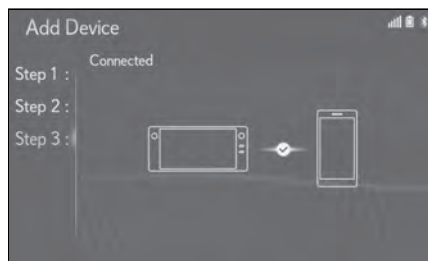
- 5 Select the desired Bluetooth® device.

- 6 Register the Bluetooth® device using your Bluetooth® device.




- 7 Check that the following screen is displayed, indicating pairing was successful.

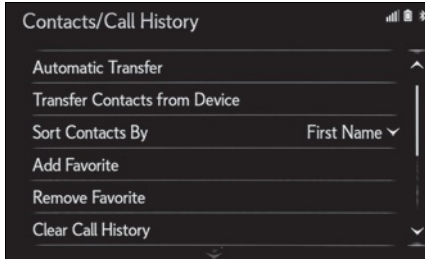
- The system is connecting to the registered device.
- At this stage, the Bluetooth® functions are not yet available.



- 8 Check that “Connected” is displayed and registration is complete.

Contacts transfer


- 1 Display the phone settings screen:
 - “MENU” button → “Setup” →  “Phone” on the sub menu
- 2 Select “Contacts/Call History”.

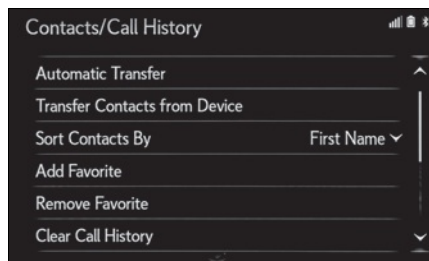


- 3 Select “Transfer Contacts from Device”.
- 4 Select “From Phone (Bluetooth)”.
- 5 Transfer the contact data to the system using a Bluetooth[®] phone.
- 6 Check that a confirmation screen is displayed when the operation is complete.

Depending on the type of Bluetooth[®] phone, certain functions may not be available.


Registering the contacts in the favorites list

- 1 Display the phone settings screen:
 - “MENU” button → “Setup” →  “Phone” on the sub menu
- 2 Select “Contacts/Call History”.






- 3 Select “Add Favorite”.
- 4 Select the desired contact to add to the favorites list.
- 5 Check that a confirmation screen is displayed when the operation is complete.


Calling by favorites list

- 1 Press the “MENU” button on the Remote Touch.
- 2 Select “Phone”.
- 3 Select  “Favorites” on the sub menu and select the desired contact.
- 4 Select the desired number.
- 5 Check that the dialing screen is displayed.

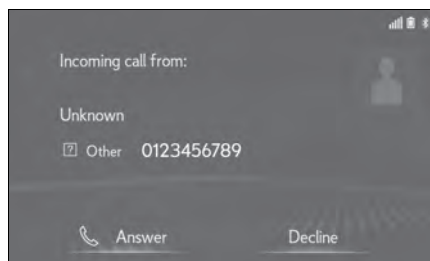
Calling the message sender

- 1 Display the message screen:
 - “MENU” button → “Phone” →  “Message” on the sub menu
- 2 Select a desired account name that is displayed on the left side of screen.
- 3 Select the desired message from the list.
- 4 Select , or press the  switch on the steering wheel.
- 5 Check that the dialing screen is displayed.

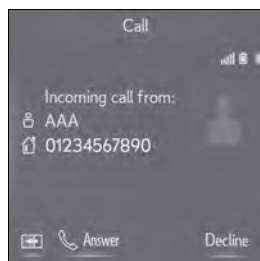
Receiving a call

Select "Answer" or press the  switch on the steering wheel to talk on the phone.

► Main display

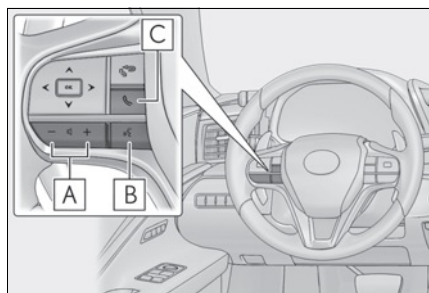


► Side display



"Decline": Select to refuse to receive the call.

Steering switches



A Volume control switch

- Press the "+" side to increase the volume.
- Press the "-" side to decrease the volume.

B Talk switch

- Press the talk switch to start the voice command system.
- To cancel voice recognition, press and hold the talk switch.

C TEL switch

- Start talking
- End talking
- End dialing
- Depending on the system, if the switch is pressed when an Apple CarPlay connection is established, the Apple CarPlay phone application will be displayed on the system screen.*

*: This function is not made available in some countries or areas.

Audio System

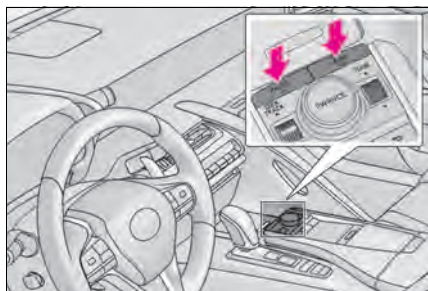
Audio control screen

The audio control screen can be reached by the following methods:

- ▶ **Using the audio control switch**
Press the “RADIO” or “MEDIA” button.
- ▶ **Using the Remote Touch**
Press the “MENU” button on the Remote Touch, then select “Audio”.

Selecting an audio source


- ▶ **Using the audio control switch**
 - 1 Press the “RADIO” or “MEDIA” button.



- 2 “RADIO” button: Press to change radio modes.

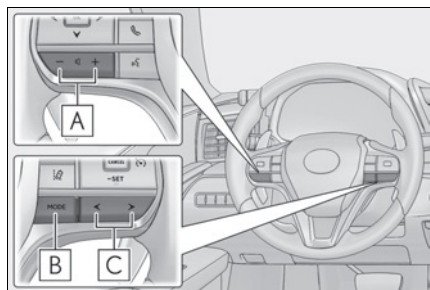
“MEDIA” button: Press to change media modes.

Each time the “RADIO” or “MEDIA” button is pressed, the audio source changes.

- ▶ **From the audio source selection screen**
 - 1 Display the audio control screen.
 - 2 Select  “Source” on the sub menu.
 - 3 Select the desired source.

Steering switch operation

Some parts of the audio/visual system can be adjusted using the switches on the steering wheel.



A Volume control switch

B “MODE” switch

C < > switch

■ Volume control switch

- Press: Volume up/down
- Press and hold (0.8 sec. or more): Volume up/down continuously

■ “MODE” switch

▶ AM, FM, SXM

- Press: Change audio modes
- Press and hold (0.8 sec. or more): Mute^{*1} (Press and hold again to resume the sound.)

▶ AUX

- Press: Change audio modes
- Press and hold (0.8 sec. or more): Mute

▶ CD, MP3/WMA/AAC disc, DVD, USB^{*2, 3}, iPod/iPhone^{*3}, Android Auto^{*2}, Bluetooth[®] audio^{*2,3}, APPS^{*2,3}

- Press: Change audio modes
- Press and hold (0.8 sec. or more): Pause

^{*1}: If cached radio is enabled, pressing and holding the “MODE” switch pauses the broadcast. (Press and hold again to play back the cached radio program.)

^{*2}: When an Apple CarPlay connection is established, this function will be unavailable.

^{*3}: When an Android Auto connection is established, this function will be unavailable.

■ ◀ ▶ switch

▶ **AM, FM, HD**

- Press: Preset station up/down
- Press and hold (0.8 sec. or more): Seek up/down
- Press and hold (1.5 sec. or more): Seek up/down continuously while the switch is being pressed

▶ **SXM**

- Press: Preset channel up/down
- Press and hold (0.8 sec. or more): Seek for stations in the relevant program type/channel category
- Press and hold (1.5 sec. or more): Seek for the channel while the switch is being pressed

▶ **CD**

- Press: Track up/down
- Press and hold (0.8 sec. or more): Fast forward/rewind

▶ **MP3/WMA/AAC disc**

- Press: File up/down
- Press and hold (0.8 sec. or more): Fast forward/rewind

▶ **DVD**

- Press: Chapter up/down
- Press and hold (0.8 sec. or more): Fast forward/rewind

▶ **USB**^{*1,2}

- Press: File/Track up/down
- Press and hold (0.8 sec. or more): Fast forward/rewind

▶ **iPod/iPhone**^{*2}

- Press: Track up/down
- Press and hold (0.8 sec. or more): Fast forward/rewind

▶ **Android Auto**^{*1}

- Press: Track up/down

▶ **Bluetooth® audio**^{*1,2}

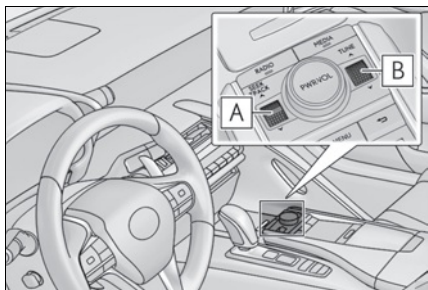
- Press: Track up/down
- Press and hold (0.8 sec. or more): Fast forward/rewind

*1: When an Apple CarPlay connection is established, this function will be unavailable.

*2: When an Android Auto connection is established, this function will be unavailable.

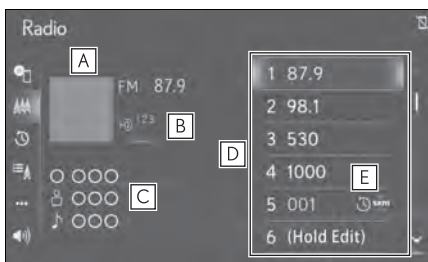
Radio

Audio control switch



- A** Turn to seek up/down.
- B** Turn to step up/down frequencies/channels.
Turn to move up/down the list.

Control screen



- A** Displays cover art.
- B** Select to display HD) multicast channels available.
- C** Displays the artist info and song title or album and genre. Select to change the displayed information. Displays messages when available from RBDS.
- D** Select to tune to preset stations/channels.
- E** Display items on the channels registered to smart favorites.

Presetting a station

Radio mode has a mix preset function, which can store up to 36 stations (6 stations per page x 6 pages) from any of the AM, FM or SXM bands.

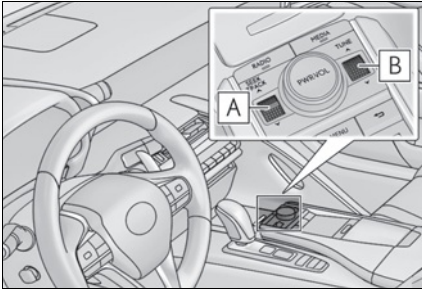
1 Tune in the desired station.



2 Select and hold “(Hold Edit)”.
To change the preset station to a different one, select and hold the preset station.

CD

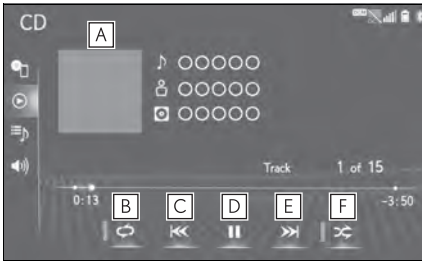
Audio control switch



- A** Turn to select a track/file.
Turn and hold to fast forward/rewind.
- B** Turn to select a track/file.
Turn to move up/down the list.

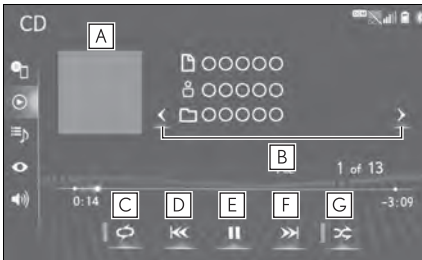
Control screen

▶ Audio CD



- A** Displays cover art.
- B** Select to set repeat playback.
- C** Select to change the track.
Select and hold to fast rewind.
- D** Select to play/pause.
- E** Select to change the track.
Select and hold to fast forward.
- F** Select to set random playback.

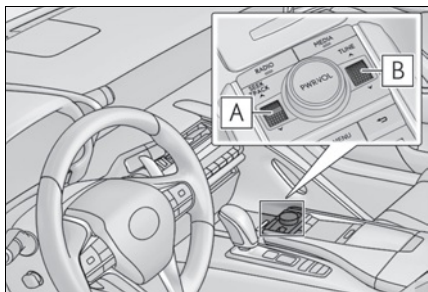
▶ MP3/WMA/AAC disc



- A** Displays cover art.
- B** Select to change the folder.
- C** Select to set repeat playback.
- D** Select to change the file.
Select and hold to fast rewind.
- E** Select to play/pause.
- F** Select to change the file.
Select and hold to fast forward.
- G** Select to set random playback.

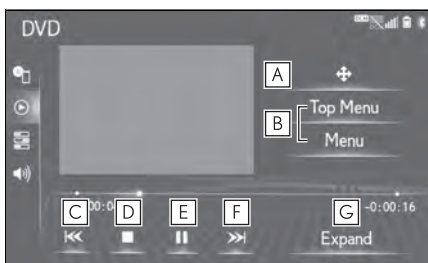
DVD

■ Audio control switch



- A** Turn to select a chapter.
Turn and hold to fast forward/rewind.
- B** Turn to select a chapter.

■ Control screen

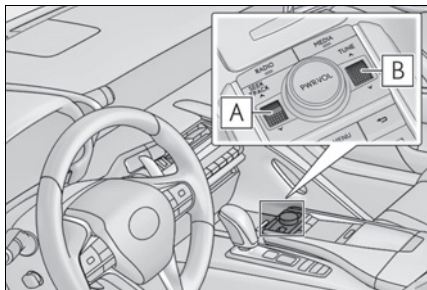


- A** Select to display the menu control key.
- B** Select to display the menu screen.
- C** Select to change the chapter.
Select and hold to fast rewind.
- D** Select to stop the video screen.
- E** Select to play/pause.
- F** Select to change the chapter.
During playback: Select and hold to fast forward.
During a pause: Select and hold to slow forward.
- G** Select to display expanded screen video.

iPod/iPhone (Apple CarPlay*)

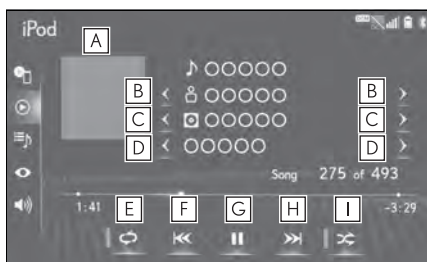
*: This function is not made available in some countries or areas.

■ Audio control switch



- A** Turn to select a track.
Turn and hold to fast forward/rewind.
- B** Turn to select a track.
Turn to move up/down the list.

■ Control screen




- A** Displays cover art.
- B** Select to change the artist*.
- C** Select to change the album*.
- D** Select to change the playlist*.
- E** Select to set repeat playback.
- F** Select to change the track.
Select and hold to fast rewind.
- G** Select to play/pause.
- H** Select to change the track.
Select and hold to fast forward.
- I** Select to set random playback.

*: When an Apple CarPlay connection is established, this switch will not be displayed.

Lexus Climate Concierge

The seat heaters, seat ventilators and heated steering wheel are each automatically controlled according to the set temperature of the air conditioning system, the outside and cabin temperature, etc. Lexus Climate Concierge allows a comfortable condition to be maintained without adjusting each system.

Displaying the Lexus Climate Concierge

Press the "MENU" button on the Remote Touch and select "Climate" to display the air conditioning control screen. Then, select  on the sub menu to display the Lexus Climate Concierge control screen.

Turning on Lexus Climate Concierge



Select .

The indicator on the Lexus Climate Concierge control screen illuminates and all of the following systems operate in automatic mode.

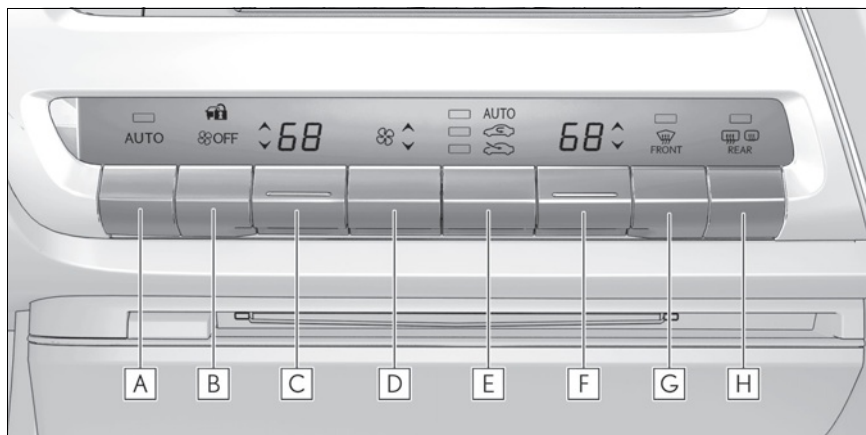
- Air conditioning system
- Seat heaters and ventilators
- Heated steering wheel (if equipped)

If any of the system is operated manually, the indicator turns off. However, all other functions continue to operate in automatic mode.

Air Conditioning System

Press the “MENU” button on the Remote Touch, then select “Climate” to display the air conditioning control screen.

Control panel



- A** Automatic mode switch
- B** Off switch
- C** Left-hand side temperature control switch
- D** Fan speed control switch
- E** Outside/recirculated air mode switch
- F** Right-hand side temperature control switch
- G** Windshield defogger switch
- H** Rear window and outside rear view mirror defoggers switch

■ Adjusting the temperature

Operate the temperature control switch upwards to increase the temperature and downwards to decrease the temperature.

If the “A/C” indicator is turned off, the system will blow ambient temperature air or heated air.

■ Setting the fan speed

Operate the fan speed control switch upwards to increase the fan speed and downwards to decrease the fan speed.

Press the off switch to turn the fan off.

■ Changing the air flow mode

→P.79

Air conditioning control screen

Main control screen

Using the touchpad of the Remote Touch, select the button on the screen.

B to **E** can be adjusted by performing the following operations.

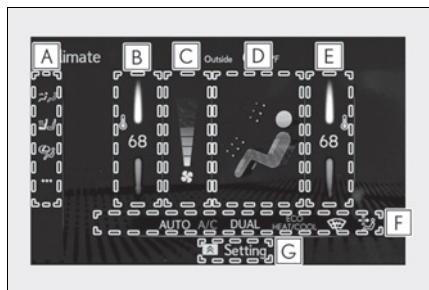
Flick operation: Move the pointer to the desired item and flick the touchpad up or down.

The item can be adjusted by one level.

Trace operation: After selecting the desired item, trace the pad surface.


The item can be adjusted by the amount that you trace.


Trace operation cannot be used while driving.





A Sub menu

Selecting the sub menu item to switch the main screen.

: Display the air conditioning control screen

: Display the heated steering wheel (if equipped)/seat heater/seat ventilator control screen


: Display the Lexus Climate Concierge control screen


: Display the option control screen


B Adjust the left-hand side temperature setting

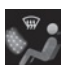
C Adjust the fan speed setting

D Select the air flow mode

: Air flows to the upper body

: Air flows to the upper body and feet

: Air flows to the feet

: Air flows to the feet and the windshield defogger operates

E Adjust the right-hand side temperature setting

F Function on/off indicators

When the function is on, the indicator illuminates on the control screen.

G Sub function menu

When the sub function button on the Remote Touch is pressed, the following functions can be switched on and off.



: Set Lexus Climate Concierge (→P.77)

“AUTO”: Set automatic mode on/off (→P.81)

“Off”: Turn the fan off

“A/C”: Set cooling and dehumidification function

“DUAL”: Adjust the temperature for driver and passenger seats separately (“DUAL” mode)



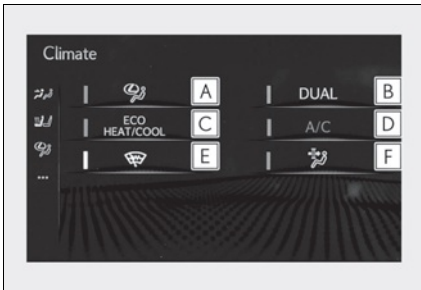
: Set eco air conditioning mode

■ Option control screen

Select **...** on the sub menu to display the option control screen.

The functions can be switched on and off.

When the function is on, the indicator illuminates on the screen.



A Set Lexus Climate Concierge (→P.77)

B Adjusting the temperature for driver and passenger seats separately (“DUAL” mode)

C Set eco air conditioning mode

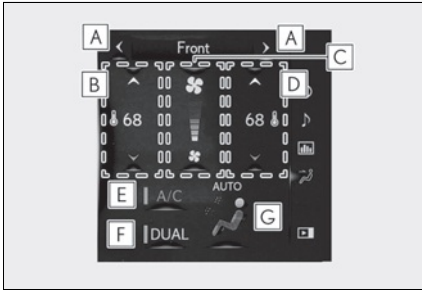
Air conditioning and heater output is limited to prioritize fuel economy.

D Cooling and dehumidification function

E Prevent ice from building up on the windshield and wiper blades (Windshield wiper de-icer) (if equipped)

F Removing pollen from the air (Micro dust and pollen filter)

■ Side display



- A** Display the heated steering wheel (if equipped)/seatheaters/seatventilators control screen
- B** Adjust the left-hand side temperature setting
- C** Adjust the fan speed setting
- D** Adjust the right-hand side temperature setting

- E** Set cooling and dehumidification function on/off
- F** Adjust the temperature for the driver's and front passenger's seats separately ("DUAL" mode)
- G** Select the air flow mode

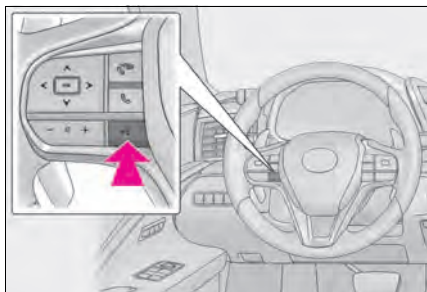
Using automatic mode

- 1** Press the automatic mode switch or select "AUTO" on the sub function menu. (→P.78, 80)
- 2** Press the outside/recirculated air mode switch to switch to automatic air intake mode. The air conditioning system automatically switches between outside air and recirculated air modes.
- 3** Adjust the temperature setting.
- 4** To stop the operation, press the off switch or select "Off" on the sub function menu. (→P.78, 80)

Voice Command System

The voice command system enables the radio, phone dialing, etc. to be operated using voice commands. Refer to the command list for samples of voice commands.

Basic operation



1 Press the talk switch.

Voice guidance for the voice command system can be skipped by pressing the talk switch.

2 If “Getting Started with Voice” screen is displayed, select “OK” or press the talk switch.

3 After hearing a beep, say a supported command.

- To display sample commands of the desired function, say the desired function or select the desired function button. To display more commands, select “More Commands”.
- Selecting “Help” or saying “Help” prompts the voice command system to offer examples of commands and operation methods.
- Registered POIs, registered names in the contacts list etc., can be said in the place of the “<>” next to the commands.

Continue on to pages 83-88 for a detailed list of Voice Commands for the following categories:

Common	P.83
Top menu.....	P.83
Navigation.....	P.84
Phone	P.85
Radio	P.86
Audio.....	P.87
Info.....	P.87
Apps.....	P.88
Climate.....	P.88

Command list

Common

Command	Action
"Help"	Displays examples of some of the available commands
"Go Back"	Returns to the previous screen
"Cancel"	Cancels the voice command system
"Start over"	Returns to top menu screen
"Pause"	Temporarily pauses a voice session until it is resumed by pressing the talk switch again.

Top menu

Command	Action
"Show command examples for <menu>"	Displays the command list of the selected menu
"More Commands"	Displays more commonly used commands
"Voice Settings"	Displays Voice Setting screen
"Train my voice"	Displays Train Voice Recognition screen *

*: Vehicle must be parked

■ Navigation

Command	Action
"Get directions to <house #, street, city, state>"*1	Enables setting a destination by saying the address *2,3
"Find a <POI category/POI name>"	Displays a list of <POI category>*4/POI name *5> near the current position
"Find a <POI> near my destination"	Displays a list of <POI> near the destination
"Find a <POI category> in a city"*1	Displays a list of <POI> in a specified city and state *3
"Go Home"	Displays the route to home
"Go to Favorite <1-10>"	Sets the location registered to the corresponding favorite number as the destination
"Show Recent Destinations"	Displays recent destinations. Selecting a number from the list will start navigation to the selected recent destination.
"Cancel Route"	Cancels the route guidance
"Delete destinations"	Displays a list of destination to delete *6
"Show <POI category> icons"	Displays the specified point of interest category *4 icons on the map
"Destination Assist"	Connects the system to the Lexus response center

*1: English and French only

*2: Best recognition results occur when saying the full address without the zipcode

*3: When the language is set to French, the supported area is only Quebec Province in Canada

*4: For example; "Gas stations", "Restaurants", etc.

*5: Major national brands are always supported. Local brands are also supported with a subscription to the Lexus Enform. Contact your Lexus dealer for details.

*6: Used when multiple destinations are set on a route

■ Phone

Command	Action
"Call <contact>"*	Places a call to the specified contact from the phone book
"Call <contact> <phonetype>"*	Places a call to the specified phone type of the contact from the phone book
"Dial <phone number>"	Places a call to the specified phone number
"Redial"	Places a call to the phone number of the latest outgoing call
"Call Back"	Places a call to the phone number of latest incoming call
"Show Recent Calls"	Displays the call history screen
"Send a message to <contacts>"	Sends a text message to specified contact from the phone book

*: If the system does not recognize the name of a contact, create a voice tag. The name of a contact can also be recognized by adding a voice tag.

■ While in a phone call

Command	Action
"Send <digits>"	Sends DTMF tones has specified
"Mute"	Mutes the microphone (far side cannot hear the conversation)
"Unmute"	Unmutes the microphone

■ While incoming message notification is displayed*

Command	Action
"Read Message"	Reads the incoming message over the vehicle speakers
"Ignore"	Ignores the incoming message notification
"Reply"	Initiates sending a reply to the incoming message
"Call"	Places a call to the phone number of incoming message

*: Full screen message notification must be turned on within the phone settings

■ Radio

Command	Action
"Tune to <frequency> AM"	Changes the radio to the specified AM frequency
"Tune to <frequency> FM"	Changes the radio to the specified FM frequency
"Play a <genre> station"	Changes the radio to an FM station of the specified genre ^{*1}
"Tune to preset <1-36>"	Changes the radio to the specified preset radio station
"Tune to a <genre> satellite station"	Changes the radio to a satellite radio channel of the specified genre ^{*2}
"Tune to <satellite channel name>"	Changes the radio to the satellite radio channel with the specified name ^{*2}
"Tune to channel <number> on XM"	Changes the radio to a satellite radio channel of the specified number ^{*2}

*1: A station list must be built first using the radio screen

*2: Requires a satellite radio subscription

■ Audio*

Command	Action
"Play Playlist <name>"	Plays tracks from the selected playlist
"Play Artist <name>"	Plays tracks from the selected artist
"Play Song <name>"	Plays the selected track
"Play Album <name>"	Plays tracks from the selected album
"Play Genre <name>"	Plays tracks from the selected genre
"Play Composer <name>"	Plays tracks from the selected composer
"Play Podcast <name>"	Plays tracks from the selected podcast
"Play Audiobook <name>"	Plays tracks from the selected audiobook
"Audio On"	Turns the audio system on
"Audio Off"	Turns the audio system off
"Change the audio source to <source name>"	Sets the source to the specified audio mode

*: The audio device must be connected via a USB cable to use the functionality in this section

■ Info*1

Command	Action
"Get the Forecast"	Displays weather information
"Get the Forecast for <city>"*2	Displays weather for the specified city
"Show Traffic"	Displays traffic information
"Show Traffic near here"	Displays traffic information near your current location
"Get traffic along my route"	Displays traffic information along your current route
"Show Traffic on this street"	Displays traffic information along road you are currently driving on
"Show Traffic for saved route"	Displays traffic information for a saved route
"Show Predictive Traffic"	Displays the predictive traffic map

*1: This function is not made available in some countries, areas, or on some models.

*2: Only major US cities are supported by voice

■ Apps

Command	Action
"Launch <apps>"*	Activates the Lexus Enform App Suite 2.0 application

*: When an application is opened and is in full screen mode, pressing the talk switch will start the voice command system and commands for the currently displayed application will be available

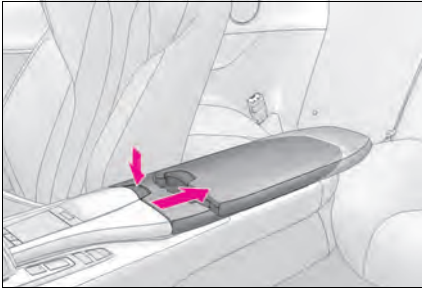
■ Climate

Command	Action
"Turn the AC on/Turn the AC off"	Turns air conditioning system on or off
"Change the Fan speed to <#>"	Changes the set fan speed of the air conditioning system to <#>
"Set temperature to <#> degrees"	Changes the set temperature of the air conditioning system to <#> degrees*
"Increase Temperature/Decrease Temperature"	Increases or decreases the temperature of the air conditioning system
"Increase Fan speed/Decrease Fan speed"	Increases or decreases the fan speed of the air conditioning system
"Show the front climate control screen"	Displays the screen to control the air conditioning or seat heating system
"Set the steering wheel temperature"	Displays the screen to control the air conditioning or seat heating system
"Show the front seat heater settings"	Displays the screen to control the air conditioning or seat heating system
"Show the concierge screen"	Displays the screen to control the air conditioning or seat heating system
"Concierge Mode On"	Turns concierge mode on

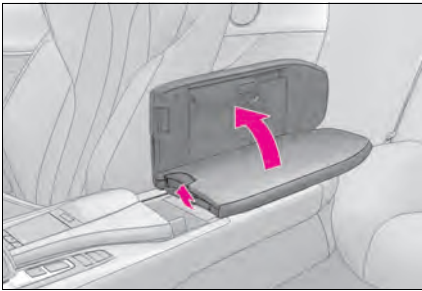
*: Only within the possible temperature range of the air conditioning system

USB/AUX Ports

There are 2 USB ports and an AUX port in the console box.



- 1** Slide the armrest as far back while pressing the button.



- 2** Lift the armrest while pulling the knob.



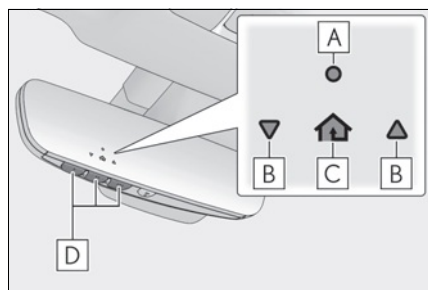
- 3** Connect a device.
Turn on the power of the device if it is not turned on.

Garage Door Opener

The garage door opener can be programmed to operate garage doors, gates, entry doors, door locks, home lighting systems, security systems, and other devices.

System components

The HomeLink[®] wireless control system in your vehicle has 3 buttons which can be programmed to operate 3 different devices. Refer to the programming methods on the following pages to determine the method which is appropriate for the device.



- A** HomeLink[®] indicator light
- B** Garage door operation indicators
- C** HomeLink[®] icon

Illuminates while HomeLink[®] is operating.

- D** Buttons

■ Before programming HomeLink[®]

- During programming, it is possible that garage doors, gates, or other devices may operate. For this reason, make sure that people and objects are clear of the garage door or other devices to prevent injury or other potential harm.
- It is recommended that a new battery be placed in the remote control transmitter for more accurate programming.
- Garage door opener motors manufactured after 1995 may be equipped with rolling code protection. If this is the case, you may need a stepladder or other sturdy, safe device to reach the “Learn” or “Smart” button on the garage door opener motor.

■ HomeLink[®] programming procedure

The programming procedures can also be found at the following URL.

Website: www.homelink.com/lexus



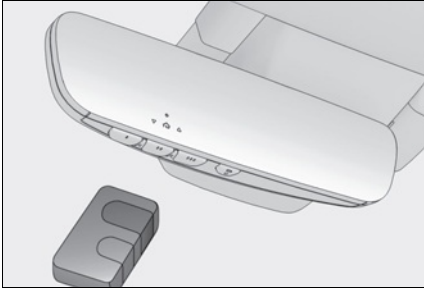
For support, contact customer support at the following.

Help Line: 1-800-355-3515

■ Programming HomeLink®

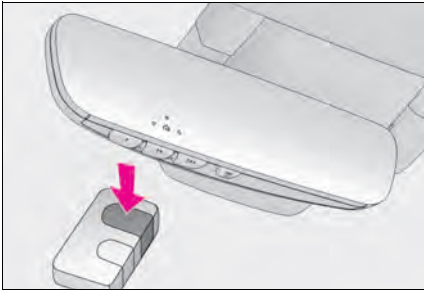
Steps **1** through **3** must be performed within 60 seconds, otherwise the indicator light will stop flashing and programming will not be able to be completed.

- 1** Press and release the HomeLink® button you want to program and check that the HomeLink® indicator light flashes (orange).



- 2** Point the remote control transmitter for the device at the rear view mirror, 1 to 3 in. (25 to 75 mm) from the HomeLink® buttons.

Keep the HomeLink® indicator light in view while programming.



- 3** Program a device.

► Programming a device other than an entry gate (for U.S.A. owners)

Press and hold the remote control transmitter button until the HomeLink® indicator light changes from slowly flashing orange to rapidly flashing green (rolling code) or continuously lit green (fixed code), then release the button.

► Programming an entry gate (for U.S.A. owners)/Programming a device in the Canadian market

Press and release the remote control transmitter button at 2 second intervals, repeatedly, until the HomeLink® indicator light changes from slowly flashing (orange) to rapidly flashing (green) (rolling code) or continuously lit (green) (fixed code).

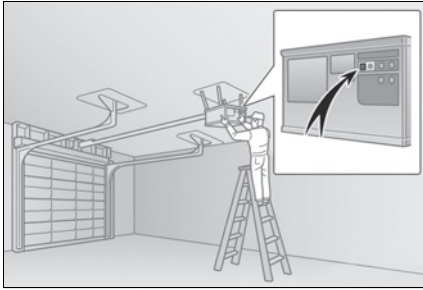
- 4** Test the HomeLink® operation by pressing the newly programmed button and observing the indicator light:
 - Indicator light illuminates: Programming of a fixed code device has completed. The garage door or other device should operate when a HomeLink® button is pressed and released.
 - Indicator light flashes rapidly: The garage door opener motor or other device is equipped with a rolling code. To complete programming, firmly press and hold the HomeLink® button for 2 seconds then release it.

- If the garage door or other device does not operate, proceed to “Programming a rolling code system”.

- 5 Repeat the steps above to program another device for any of the remaining HomeLink® buttons.

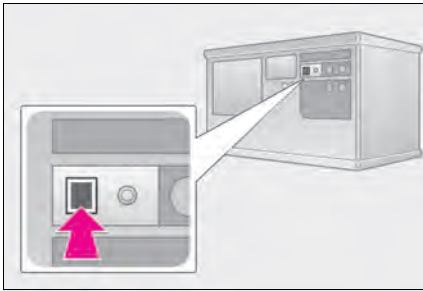
■ Programming a rolling code system

2 or more people may be necessary to complete rolling code programming.



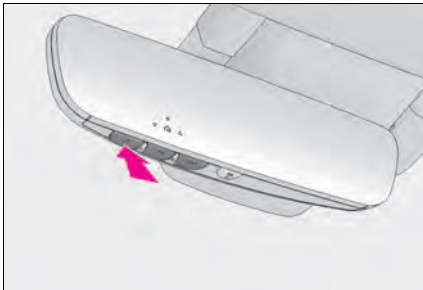
- 1 Locate the “Learn” or “Smart” button on the garage door opener motor in the garage.

This button can usually be found where the hanging antenna wire is attached to the unit. The name and color of the button may vary by manufacturer. Refer to the owner’s manual supplied with the garage door opener motor for details.



- 2 Press and release the “Learn” or “Smart” button.

Perform **3** within 30 seconds after performing **2**.



- 3 Press and hold the desired HomeLink® button (inside the vehicle) for 2 seconds and release it. Repeat this sequence (press/hold/release) up to 3 times to complete programming.

If the garage door opener motor operates when the HomeLink® button is pressed, the garage door opener motor recognizes the HomeLink® signal.

■ Enabling 2-way communication with a garage door (only available for compatible devices)

When enabled, 2-way communication allows you to check the status of the opening and closing of a garage door through indicators in your vehicle.

2-way communication is only available if the garage door opener motor used is a compatible device. (To check device compatibility, refer to www.homelink.com.)

- 1 Within 5 seconds after programming the garage door opener has been completed, if the garage door opener motor is trained to HomeLink[®], both garage door operation indicators will flash rapidly (green) and the light on the garage door opener motor will blink twice, indicating that 2-way communication is enabled.

If the indicators do not flash, perform **2** and **3** within the first 10 presses of the HomeLink[®] button after programming has been completed.

- 2 Press a programmed HomeLink[®] button to operate a garage door.
- 3 Within 1 minute of pressing the HomeLink[®] button, after the garage door operation has stopped, press the “Learn” or “Smart” button on the garage door opener motor. Within 5 seconds of the establishment of 2-way communication with the garage door opener, both garage door operation indicators in the vehicle will flash rapidly (green) and the light on the garage door opener motor will blink twice, indicating that 2-way communication is enabled.

■ Reprogramming a single HomeLink[®] button

When the following procedure is performed, buttons which already have devices registered to them can be overwritten:

- 1 With one hand, press and hold the desired HomeLink[®] button.
- 2 When the HomeLink[®] indicator starts flashing (orange), continue to hold the HomeLink[®] button and perform “Programming HomeLink[®]” **1** (it takes 20 seconds for the HomeLink[®] indicator to start flashing).

Operating HomeLink[®]

Press the appropriate HomeLink[®] button. The HomeLink[®] indicator light should turn on.

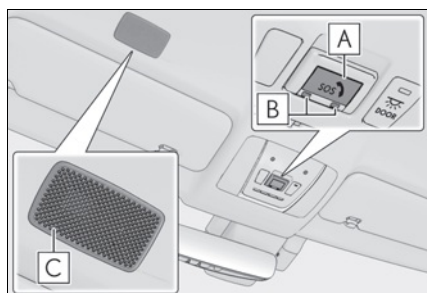
Lexus Enform Safety Connect (if equipped)

Safety Connect is a subscription-based telematics service that uses Global Positioning System (GPS) data and embedded cellular technology to provide safety and security features to subscribers. Safety Connect is supported by Lexus' designated response center, which operates 24 hours per day, 7 days per week.

Safety Connect service is available by subscription on select, telematics hardware-equipped vehicles.

System components

► Vehicles without sunshade

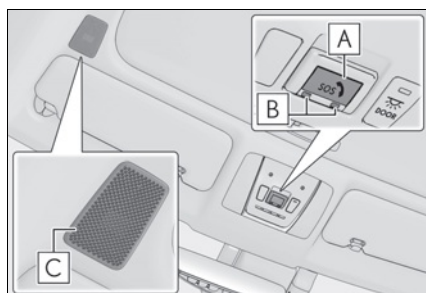


A "SOS" button

B LED light indicators

C Microphone

► Vehicles with sunshade



Services

Subscribers have the following Safety Connect services available:

● Automatic Collision Notification

In case of either airbag deployment or severe rear-end collision, the system is designed to automatically call the response center. The responding agent receives the vehicle's location and attempts to speak with the vehicle occupants to assess the level of emergency. If the occupants are unable to communicate, the agent automatically treats the call as an emergency, contacts the nearest emergency services provider to describe the situation, and requests that assistance be sent to the location.

- **Stolen Vehicle Location**

If your vehicle is stolen, Safety Connect can work with local authorities to assist them in locating and recovering the vehicle. After filing a police report, call the Safety Connect response center at 1-800-25-LEXUS (1-800-255-3987) in the United States, 1-877-539-8777 in Puerto Rico or 1-800-265-3987 in Canada, and follow the prompts for Safety Connect to initiate this service.

In addition to assisting law enforcement with recovery of a stolen vehicle, Safety-Connect-equipped vehicle location data may, under certain circumstances, be shared with third parties to locate your vehicle. Further information is available at Lexus.com.

- **Emergency Assistance Button (“SOS”)**

In the event of an emergency on the road, push the “SOS” button to reach the Safety Connect response center. The answering agent will determine your vehicle’s location, assess the emergency, and dispatch the necessary assistance required.

If you accidentally press the “SOS” button, tell the response-center agent that you are not experiencing an emergency.

- **Enhanced Roadside Assistance**

Enhanced Roadside Assistance adds GPS data to the already included warranty-based Lexus roadside service.

Subscribers can press the “SOS” button to reach a Safety Connect response-center agent, who can help with a wide range of needs, such as: towing, flat tire, fuel delivery, etc. For a description of the Roadside Assistance services and their limitations, please see the Safety Connect Terms and Conditions, which are available at Lexus.com.

Subscription

After you have signed the Telematics Subscription Service Agreement and are enrolled, you can begin receiving services.

A variety of subscription terms is available for purchase. Contact your Lexus dealer, call the following or push the “SOS” button in your vehicle for further subscription details.

- The United States

1-800-25-LEXUS (1-800-255-3987)

- Canada

1-800-26-LEXUS (1-800-265-3987)

- Puerto Rico

1-877-539-8777

Lexus Enform Remote (if equipped)

Lexus Enform Remote is a smart phone application that lets you view and remotely control certain aspects of your vehicle.

For details about the functions and services of this application, refer to <http://www.lexus.com/enform/>.

Function of the Lexus Enform Remote is achieved by using DCM (Data Communication Module).

Subscription

After you sign the Telematics Subscription Service Agreement, download the Lexus App from your smart phone's app store, and register within the app (or enroll and complete registration at the dealer), you can begin using these services.

A variety of subscription terms are available. Contact your Lexus dealer, or call 1-800-25-LEXUS (1-800-255-3987) for further subscription details.

Lexus Enform Service Connect (if equipped)

Lexus Enform Service Connect uses DCM (Data Communication Module) to collect and transmit vehicle data that allows Lexus to provide:

- Vehicle Health Report (VHR) (Safety Recalls, Service Campaigns, Current Vehicle Alerts, Required Maintenance, and Vehicle Condition Status)
- Maintenance Notifications
- Vehicle Alert Notifications

For details about this service and how to register, refer to <http://www.lexus.com/enform/>.

The Lexus Enform Service Connect is achieved by using a DCM (Data Communication Module) built in the vehicle.

SiriusXM Satellite Radio

Most in-car trials today include SiriusXM's best package — All Access. It includes every channel available on your radio, plus streaming.

For details, refer to the “NAVIGATION SYSTEM OWNER'S MANUAL”.

Subscription

All SiriusXM services, including satellite radio and data services, plus streaming services, require a subscription, sold separately or as a package by Sirius XM Radio Inc. (or, in Canada, Sirius XM Canada Inc.), after any trial subscription which may be included with your vehicle purchase or lease. To subscribe after your trial subscription, call 1-877-447-0011 (U.S.A.) or 1-877-438-9677 (Canada).

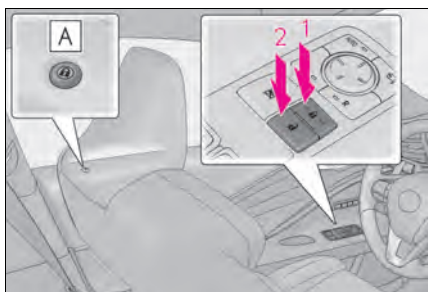
Door Locks

The vehicle can be locked and unlocked using the entry function, wireless remote control or door lock switches.

For details about the entry function or wireless remote control, refer to P.16, 17.

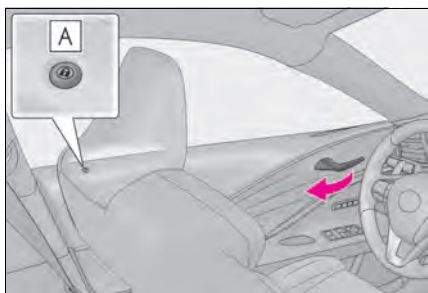
Unlocking and locking the doors from the inside

■ Door lock switches



- 1** Locks both side doors
The indicator **A** comes on.
- 2** Unlocks both side doors
The indicator **A** turns off.

■ Inside door handles



Pull the inside door handle to unlock the door.

The door lock indicator **A** turns off.

The doors can be opened by pulling the inside door handle even if the door lock indicator **A** illuminates.

What to do if...

List of Warning/Indicator Lights

Immediately stop the vehicle in a safe place and contact your Lexus dealer. Continuing to drive the vehicle may be dangerous.

BRAKE

(U.S.A.)

Brake system warning light



(Canada)

(Red)

Immediately stop the vehicle in a safe place and contact your Lexus dealer.



Charging system warning light



Low engine oil pressure warning light

Have the vehicle inspected by your Lexus dealer immediately.



(U.S.A.)

Malfunction indicator lamp



Brake Override System warning light/Drive-Start Control warning light



(Canada)



(Flashes)

Brake hold operated indicator



SRS warning light



(Flashes)

(U.S.A.)

Parking brake indicator



(U.S.A.)

ABS warning light



(Flashes)

(Canada)



(Canada)



(Yellow)

Brake system warning light



(Red or yellow)

Electric power steering system warning light



(Blinking and then continuously on)

Tire pressure warning light



(Flashes or illuminates)

PCS warning light



Slip indicator

For further information, refer to the "OWNER'S MANUAL".

What to do if...

Follow the correction procedures.



Low fuel level warning light



Master warning light



Driver's and front passenger's seat belt reminder light



LKA indicator



Rear passenger's seat belt reminder lights



(Illuminates without blinking)

Tire pressure warning light*

Stop and check.



High coolant temperature warning light



Hybrid system overheat warning light
(if equipped)

For further information, refer to the "OWNER'S MANUAL".

What to do if...

See the "OWNER'S MANUAL"



Turn signal indicator



Headlight indicator (U.S.A.)



Tail light indicator (Canada)



Headlight high beam indicator



AHB indicator



Cruise control indicator



Dynamic radar cruise control indicator



Cruise control "SET" indicator



(White or green)

LKA indicator



(Flashes in orange)

LKA indicator



Intuitive parking assist indicator



(Flashes)

Slip indicator



VSC OFF indicator



PCS warning light



BSM (Blind Spot Monitor) outside rear view mirror indicators



BSM (Blind Spot Monitor) indicator



RCTA (Rear Cross Traffic Alert) indicator



Brake hold standby indicator



Brake hold operated indicator



Security indicator



Smart access system with push-button start indicator



"READY" indicator (if equipped)



Low outside temperature indicator



Eco Driving Indicator Light (if equipped)



EV indicator (if equipped)

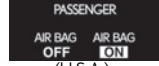


(U.S.A.)

Parking brake indicator



(Canada)



(U.S.A.)

"AIR BAG ON/OFF" indicator

For further information, refer to the "OWNER'S MANUAL".

What to do if...

See the "OWNER'S MANUAL"



"AIR BAG ON/
OFF" indicator

● Drive mode indicators



Snow mode indicator



EV drive mode indicator
(if equipped)



"Eco" indicator



"Sport S" indicator



"Sport S+" indicator



"Comfort" indicator



"Normal" indicator



"Custom" indicator

For further information, refer to the "OWNER'S MANUAL".

- *: It also comes on due to natural causes such as natural air leaks and tire inflation pressure changes caused by temperature. Adjust the tire inflation pressure to the specified level. The light will turn off after a few minutes. In case the light does not turn off even if the tire inflation pressure is adjusted, have the system checked by your Lexus dealer.

What to do if...

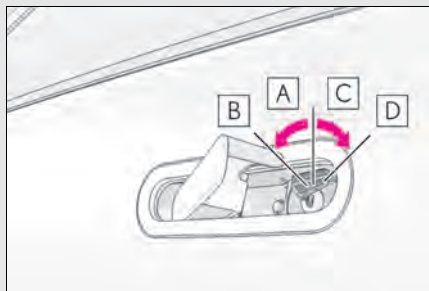
If the electronic key does not operate properly

Locking and unlocking the door

- 1 Push in the depression on the front edge of the driver's door handle.



- 2 Insert the mechanical key while pulling on the driver's door handle.



- 3 Turn the key in order to perform the following operations.

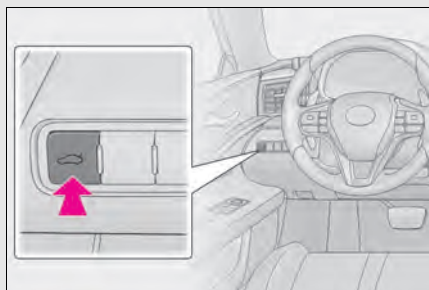
- A** Locks both side doors
- B** Closes the windows (turn and hold)*
- C** Unlocks the door

Turning the key rearward unlocks the driver's door. Turning the key once again within 5 seconds unlocks the other door.

- D** Opens the windows (turn and hold)*

*: These settings must be customized at your Lexus dealer.

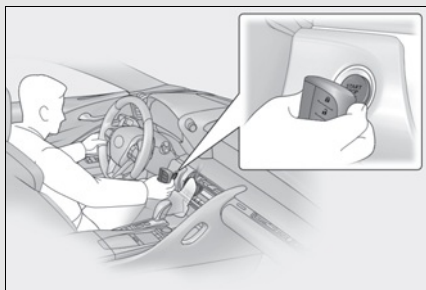
Opening the trunk



Unlock the doors, and press the trunk opener switch.

What to do if...


Starting the engine <hybrid system>



- 1 Depress the brake pedal.
- 2 Touch the Lexus emblem side of the electronic key to the engine switch <power switch>.

When the electronic key is detected, a buzzer sounds and the engine switch <power switch> will turn to IGNITION ON mode <ON mode>.

When the smart access system with push-button start is deactivated in customization setting, the engine switch <power switch> will turn to ACCESSORY mode.

- 3 Firmly depress the brake pedal and check that  is shown on the multi-information display.
- 4 Press the engine switch <power switch>.

In the event that the engine <hybrid system> still cannot be started, contact your Lexus dealer.

If the electronic key battery becomes depleted, a warning message will be shown on the multi-information display. Replace the battery with a new one. For instructions on replacing the battery, refer to the "OWNER'S MANUAL".

If you need further assistance, contact your Lexus dealer.

What to do if...

If the engine <hybrid system> doesn't start

Make sure that the correct operating procedures have been followed.

Brake pedal

Make sure that the brake pedal is firmly depressed when attempting to start the engine <hybrid system>. (→P.22)

If the engine <hybrid system> still does not start, see the "OWNER'S MANUAL" for more information or contact your Lexus dealer.

Memo

A large white rectangular area with horizontal lines, intended for writing a memo. The lines are evenly spaced and extend across the width of the page.

Memo

A large white rectangular area with horizontal lines, serving as a memo template. The lines are evenly spaced and extend across the width of the page, providing a guide for writing.



Your Lexus dealer

Your Lexus dealer will provide quality maintenance and any other assistance you may require.

If there is not a Lexus dealer near you, please call the following number:

■ U.S. OWNERS

- In the U.S. mainland or Canada:

Lexus Roadside Assistance

1-800-25-LEXUS or 1-800-255-3987 (Toll-Free)

- In Hawaii:

Servco Automotive Roadside Assistance/Customer Services

1-800-25-LEXUS or 1-800-255-3987 (Toll-Free)

■ CANADIAN OWNERS

- In Canada or the U.S. mainland:

Lexus Roadside Assistance/Customer Service

1-800-26-LEXUS or 1-800-265-3987 (Toll-Free)

Please access our **websites** for further information.

- The U.S. mainland: **www.lexus.com**
- Hawaii: **www.servcolexus.com**
- Canada: **www.lexus.ca**

©2021 TOYOTA MOTOR CORPORATION


All rights reserved. This material may not be reproduced or copied, in whole or in part, without the written permission of Toyota Motor Corporation.



Owner's Manual Quick Guide:

Publication No. OM11618U

Part No. 01999-11618

Printed in Japan 01-2110-00 

LC 500 / LC 500h Owner's Manual Quick Guide (北美U)